

Notes
Where applicable this drawing to be read in conjunction with Structural engineers and specialist sub contractors' details. Specification and drawings
Do not scale from this drawing

fixed furniture

All ss tables except where noted to be

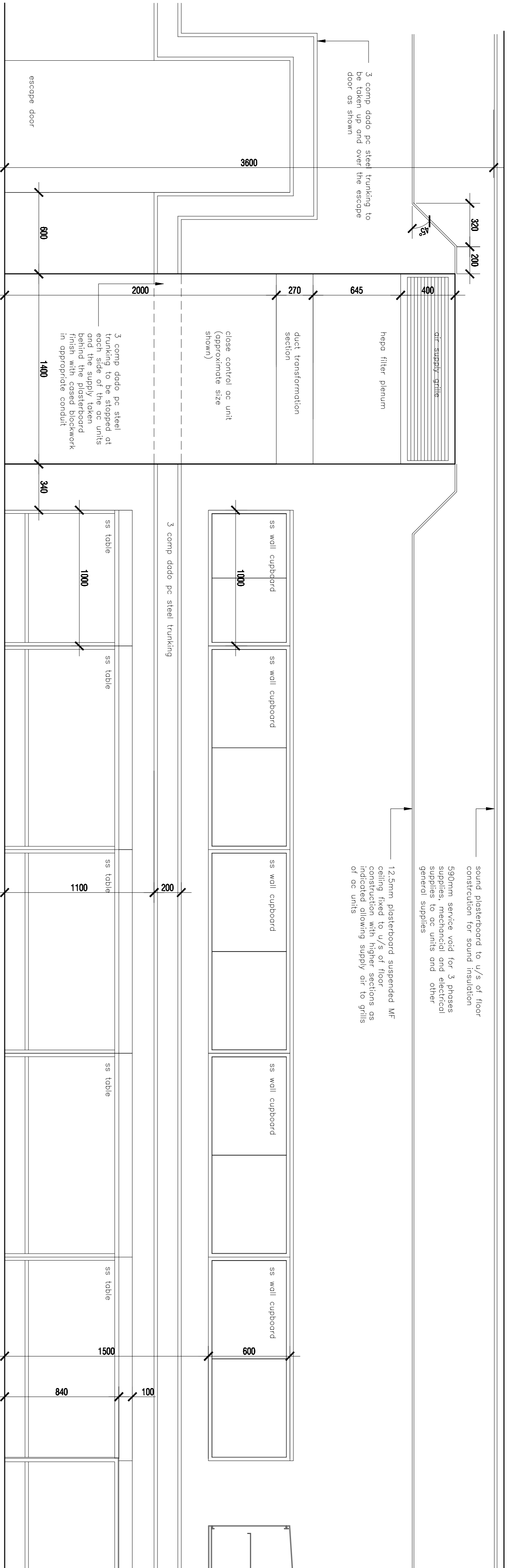
1500mm long x 800mm deep x 840mm high with 100mm upstand multi bar underframe

All ss cupboards except where noted to be

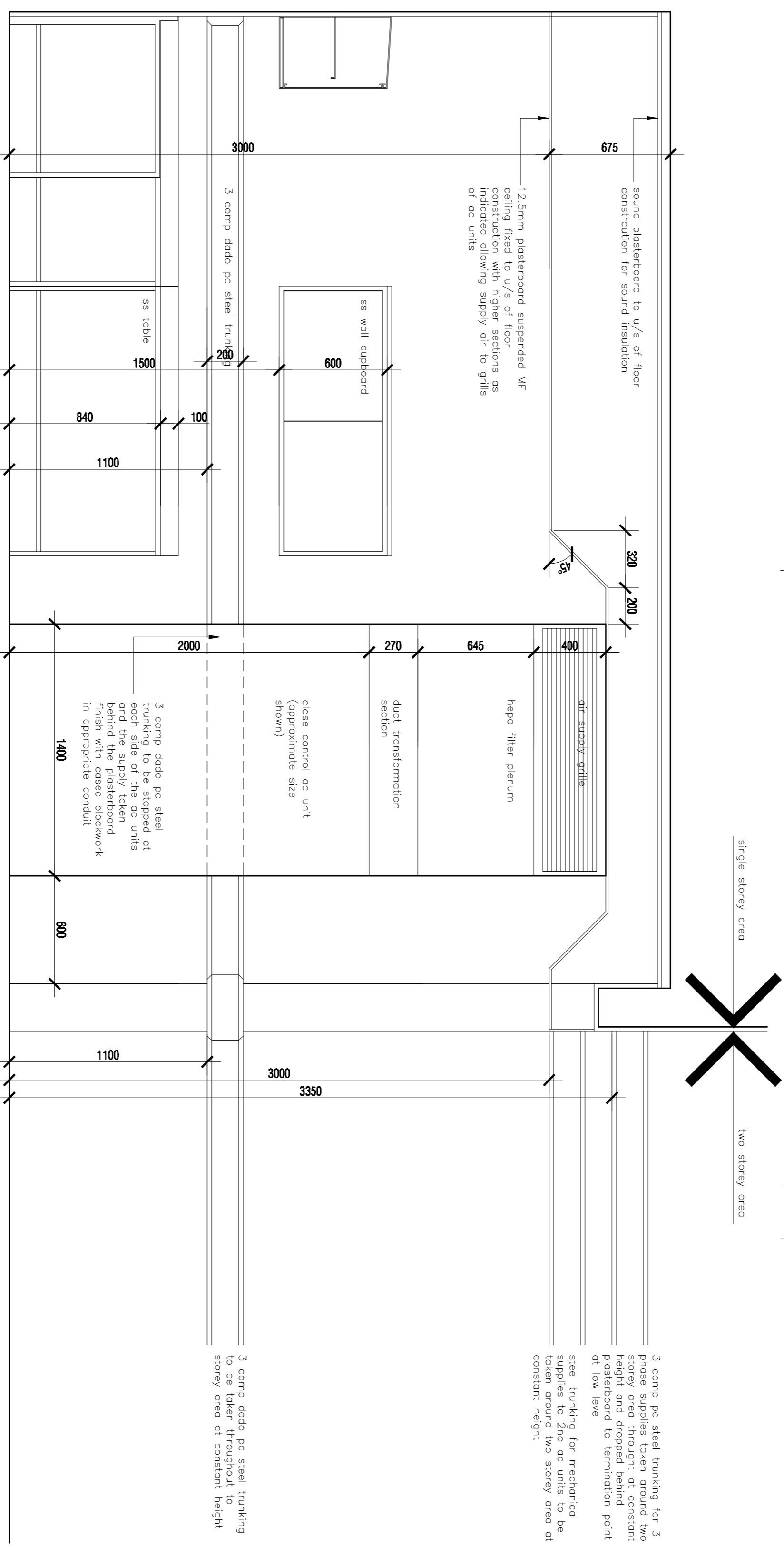
1500mm long x 400mm deep x 600mm high set at a height of 1500mm above floor except where noted

All fixed furniture to be constructed in 304 quality ss adjustable mild steel

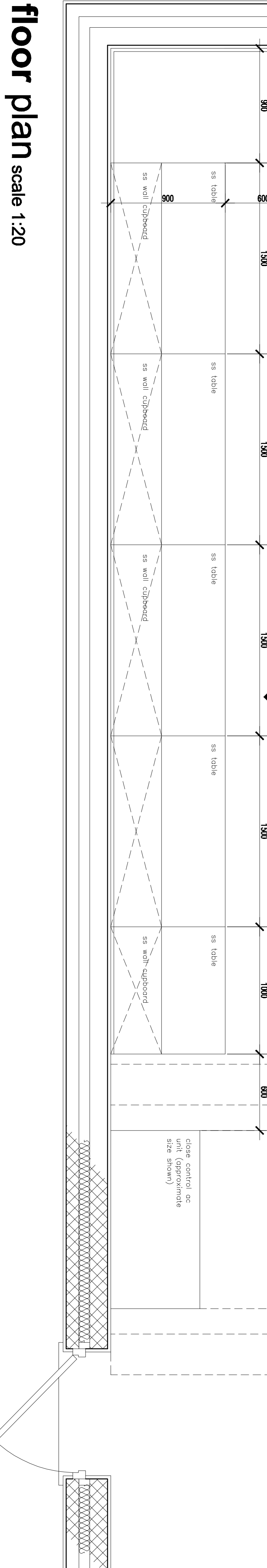
sliding top
fringed doors with edgelines
Do not scale from this drawing



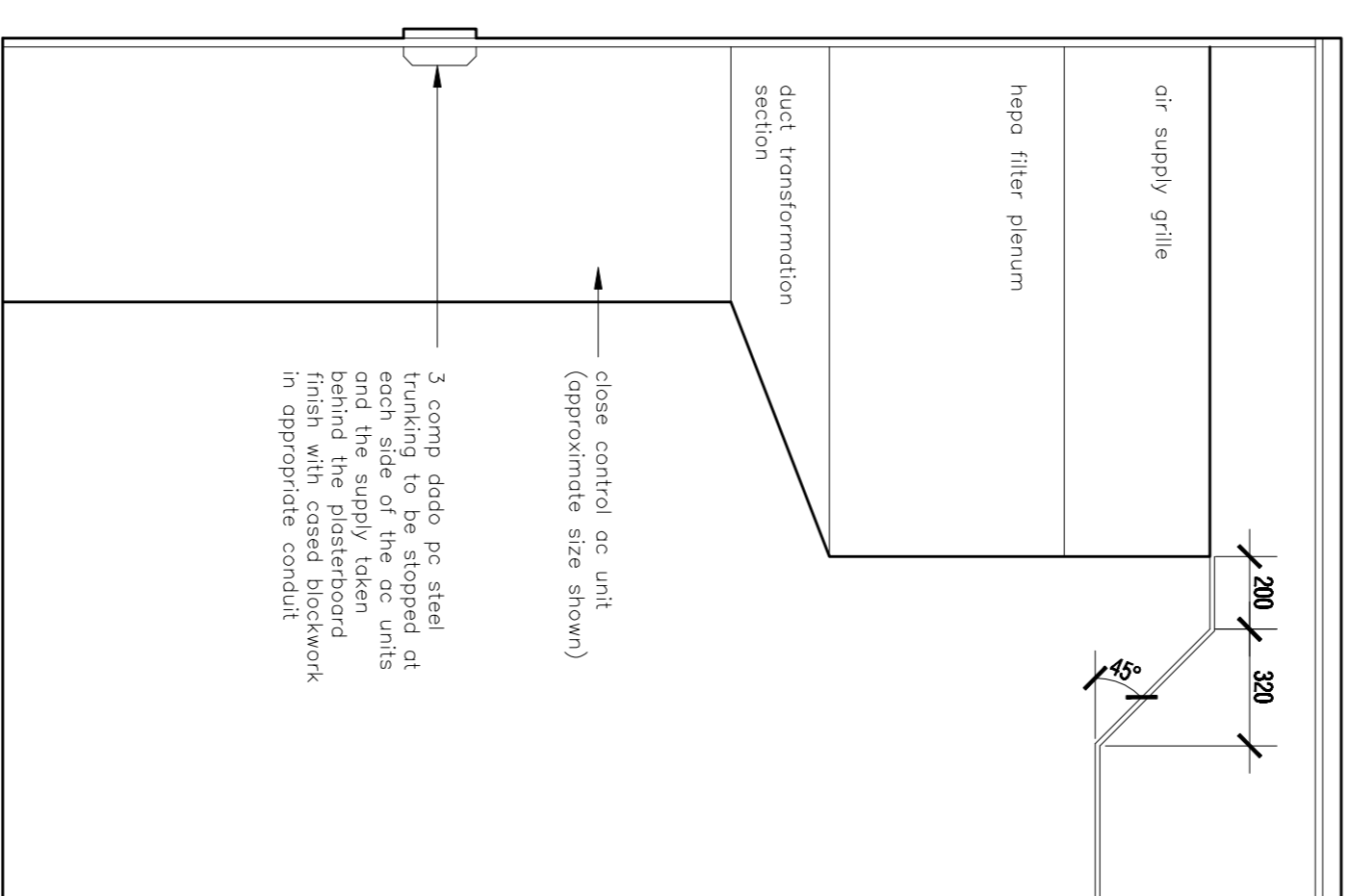
elevation b



elevation a



floor plan scale 1:20



section aa

construction issue

0 Information updated 1st Dec 06
988888
688888

Project
New building for University College London at Mullard Space Science Centre, Holmbury St Mary, Dorking

**Fixtures and fittings
Physics laboratory**

Issue	Author	Date	Drawn
1:20	100237	130	rev a
1:20	100237	130	rev a