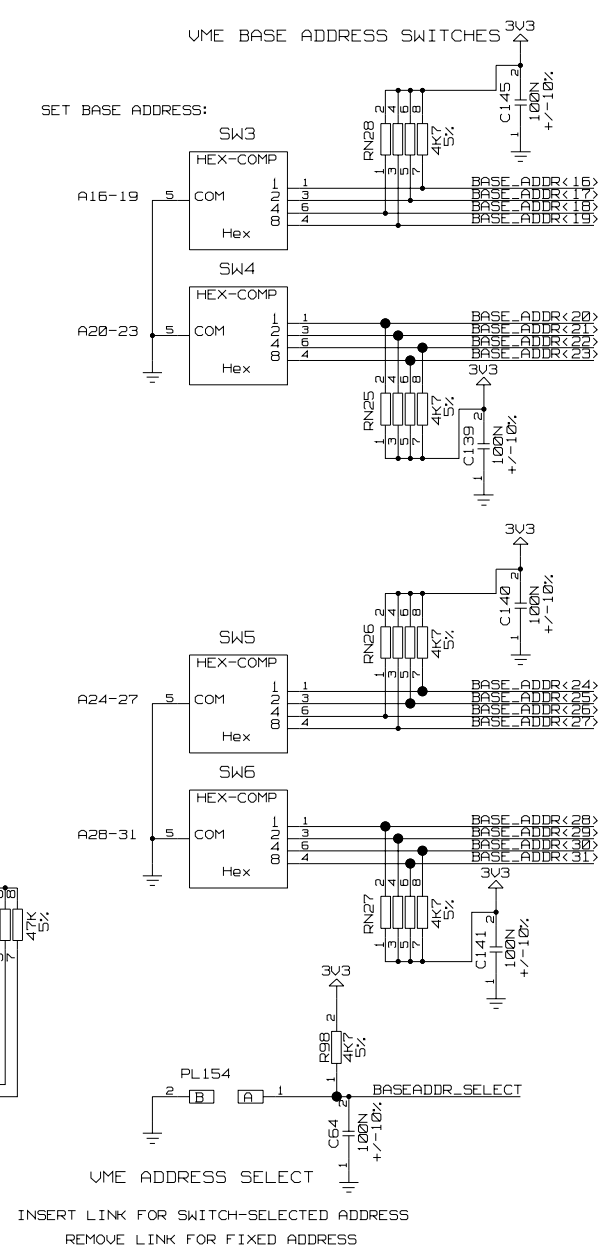


VME DELAYS AND BASE SELECT



INSERT LINK TO BYPASS
VME INTERRUPTS DAISY CHAIN

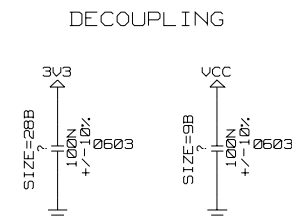
INTERRUPT-OUT

CCLRC
COUNCIL FOR THE CENTRAL LABORATORY

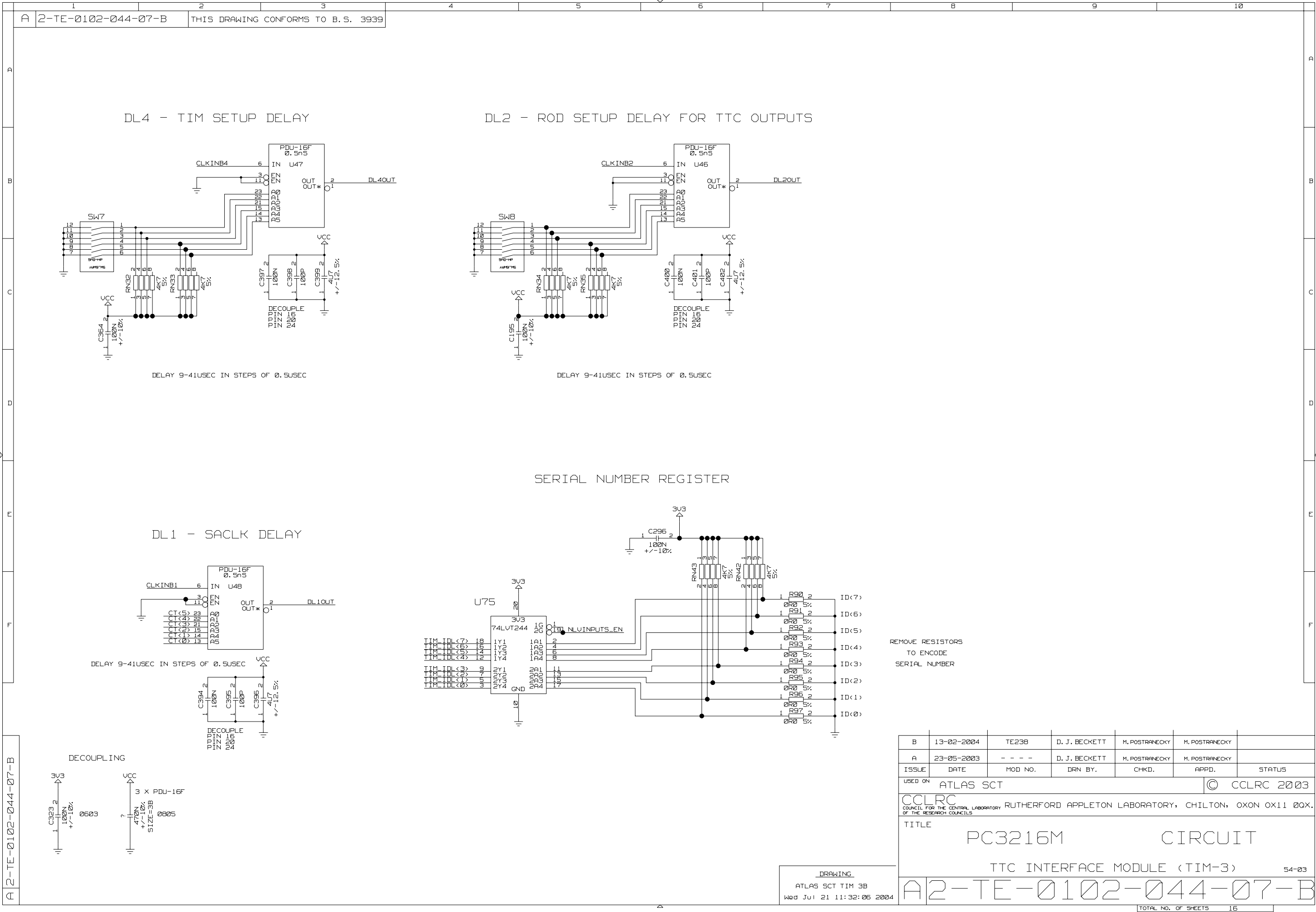
RUTHERFORD APPLETON LABORATORY, CHILTON, OXON OX11 0QX

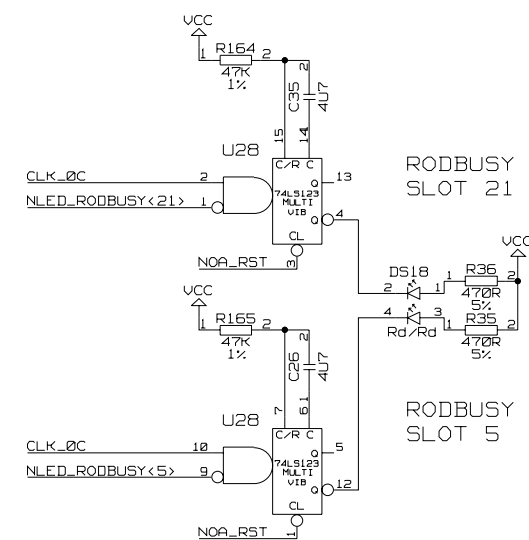
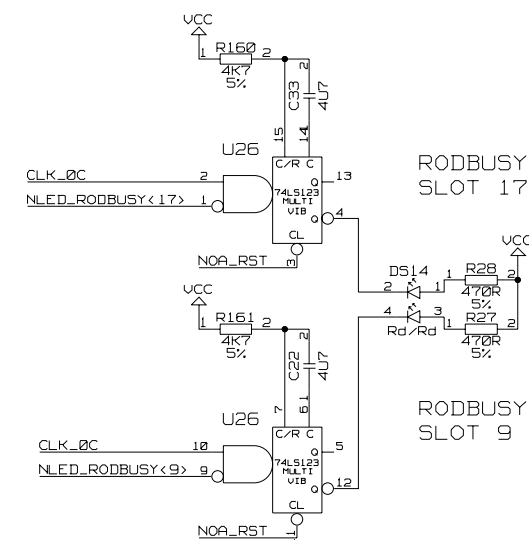
TITLE		PC3216M		CIRCUIT	
		TTC INTERFACE MODULE (TIM-3)		54-03	
04	A2-TE-0102-044-05-E				

LV SIGNAL BUFFERS



B	13-02-2004	TE238	D. J. BECKETT	M. POSTRAANEKY	M. POSTRAANEKY	
A	23-05-2003	- - - -	D. J. BECKETT	M. POSTRAANEKY	M. POSTRAANEKY	
ISSUE	DATE	MOD NO.	DRN BY.	CHIKD.	APPD.	STATUS
USED ON					ATLAS SCT	
					© CCLRC 2003	
CCLRC COUNCIL FOR THE CENTRAL LABORATORY OF THE RESEARCH COUNCILS						
RUTHERFORD APPLETON LABORATORY, CHILTON, OXON OX11 0QX.						
TITLE <div style="display: flex; justify-content: space-around; align-items: center;"> <div style="text-align: center;">PC3216M</div> <div style="text-align: center;">CIRCUIT</div> </div> <div style="display: flex; justify-content: space-between; align-items: center; margin-top: 10px;"> <div>TTC INTERFACE MODULE (TIM-3)</div> <div>54-03</div> </div>						
A2-TE-0102-044-06-B						





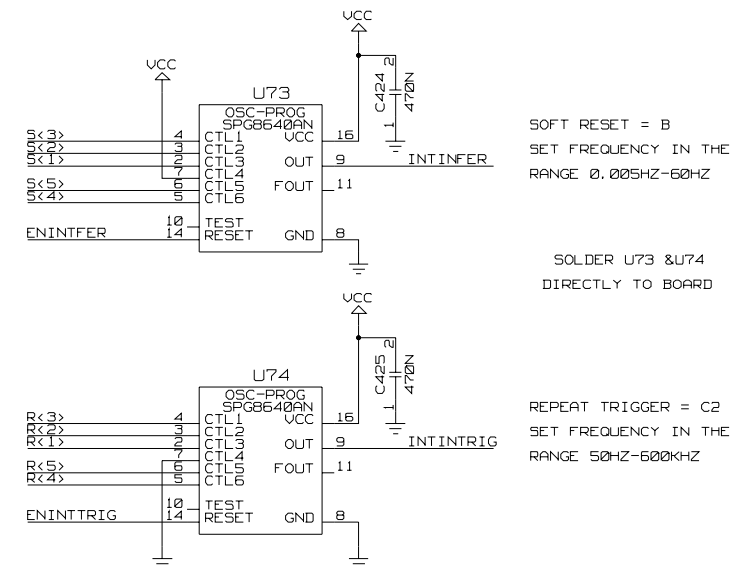
SIZE=8B
100N
+/-10%
VCC

Wed Jul 21 11:31:44 2004

CCLRC COUNCIL FOR THE CENTRAL LABORATORY OF THE RESEARCH COUNCILS RUTHERFORD APPLETON LABORATORY, CHILTON, OXON OX11 0QX

A2-TE-0102-044-09-E

INTERNAL OSCILLATORS 2



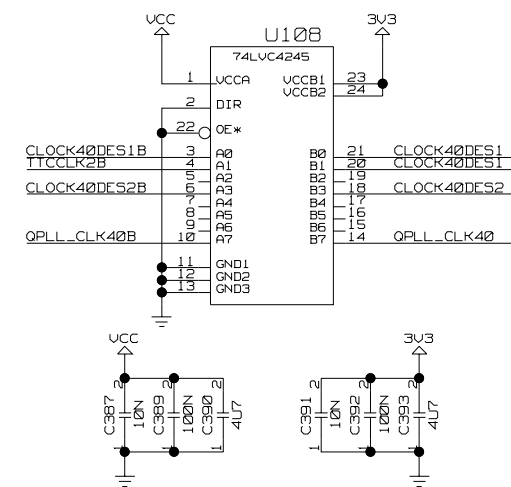
SOLDER U73 & U74
DIRECTLY TO BOARD

REPEAT TRIGGER = C2
SET FREQUENCY IN THE
RANGE 50HZ-600KHZ

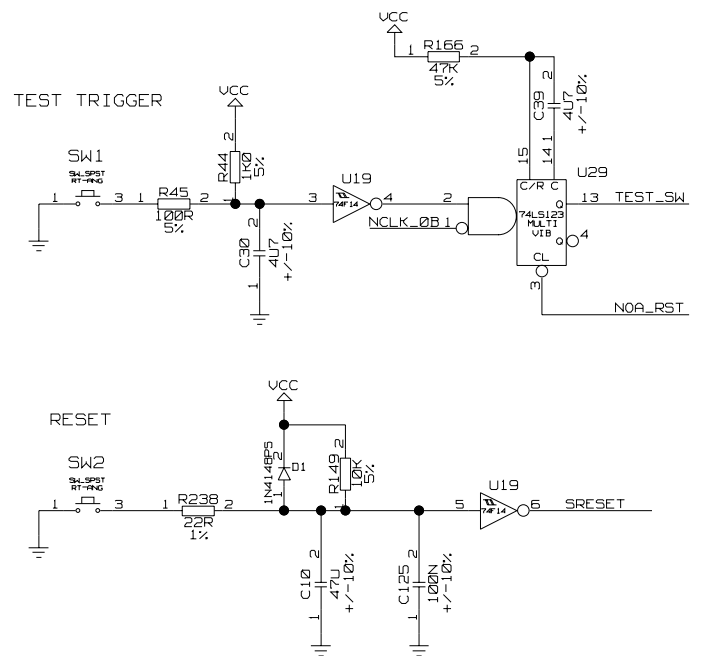
TEST SWITCHES

STRAIGHT RECEPTACLE CONTACTS PRECI-DIP 714-91-125-31-001
1X DOUBLE ROW OF 13 CONTACTS

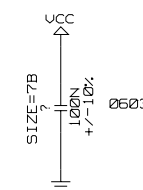
TTC J23



RESET

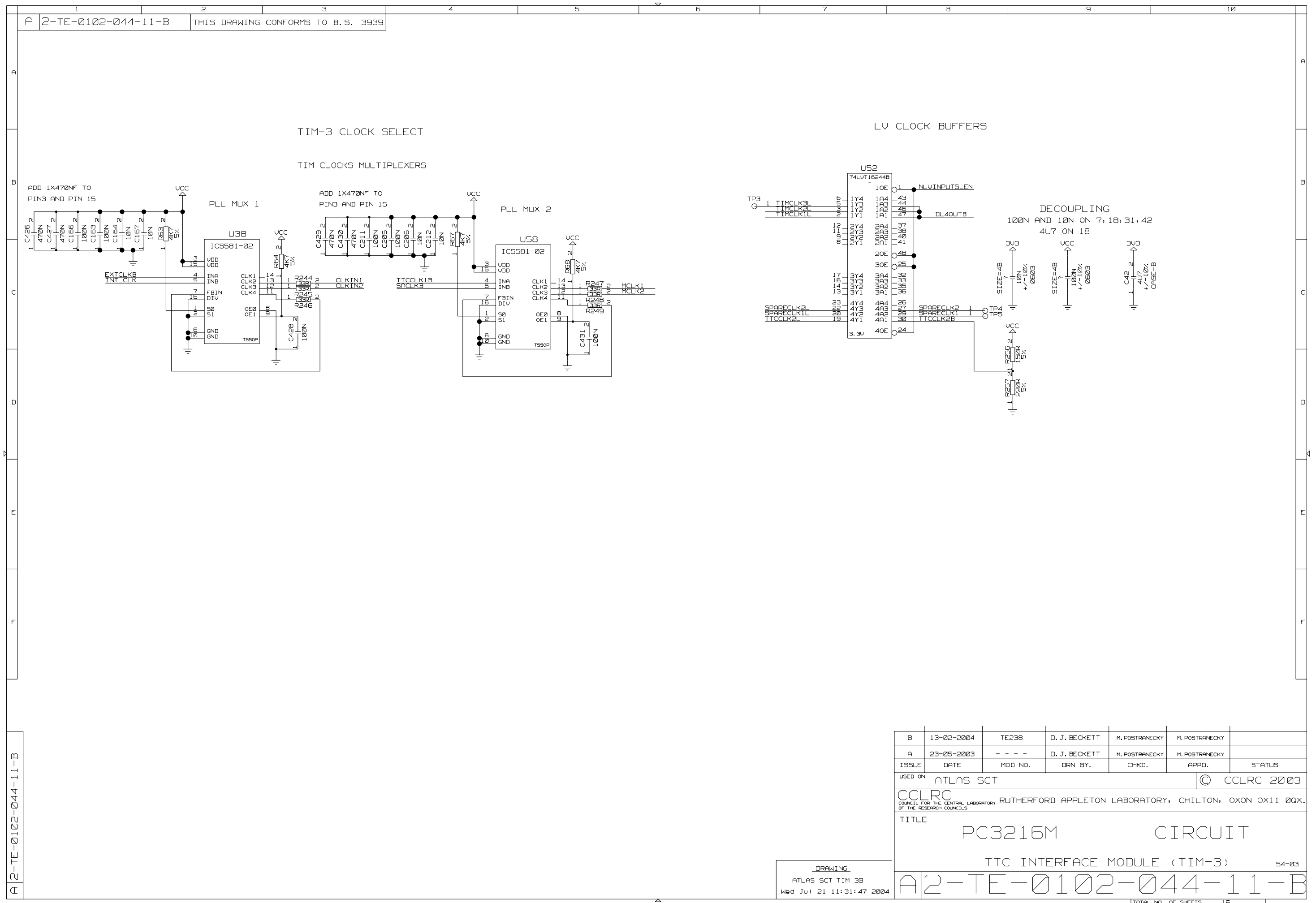


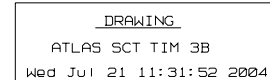
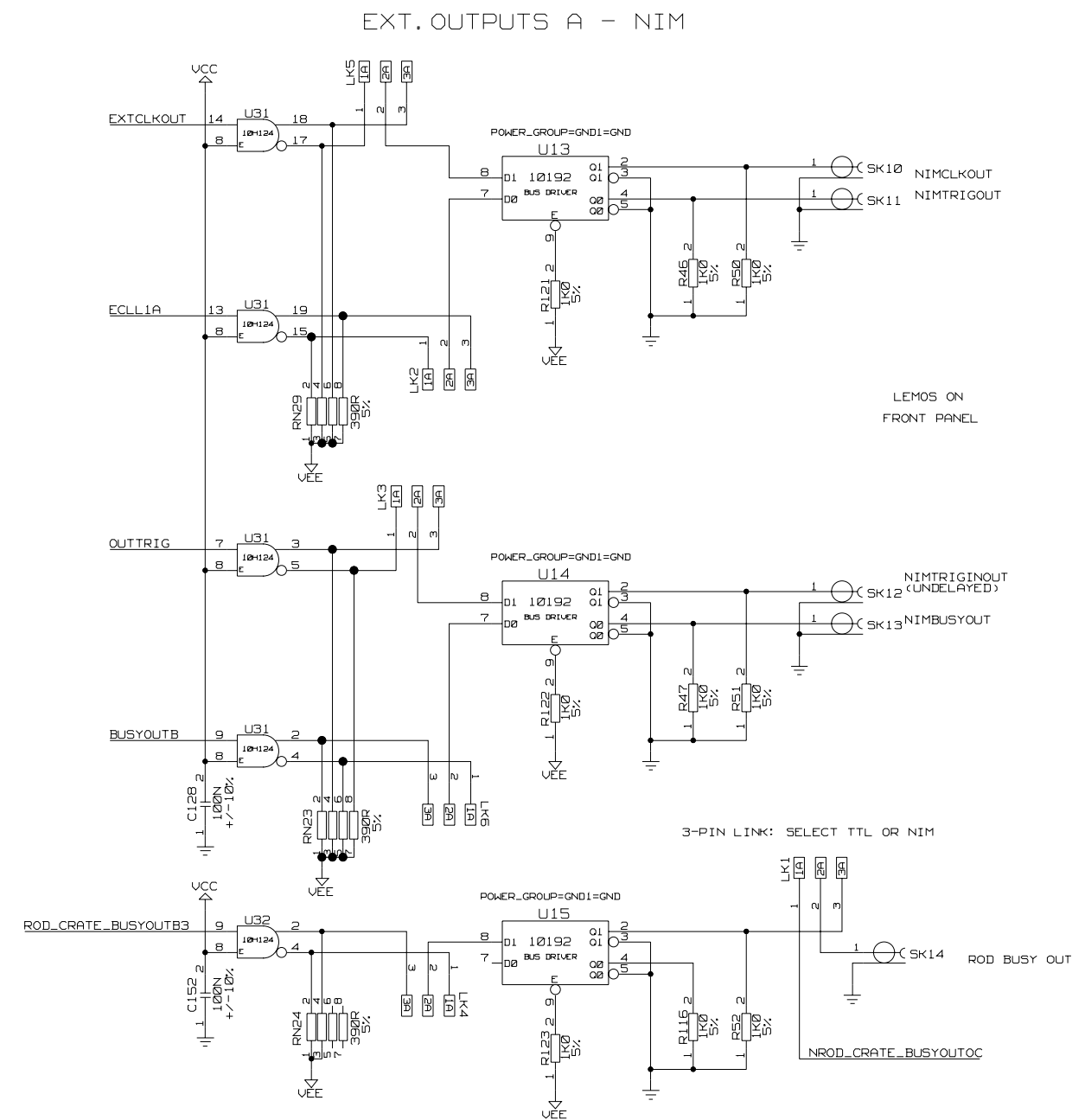
TTCRQ PCB LAYOUT



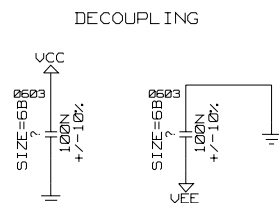
ATLAS SCT TIM 3B
Wed Jul 21 11:31:45 2004

TOTAL NO. OF SHEETS	16
---------------------	----





B	13-02-2004	TE238	D. J. BECKETT	M. POSTRANECKY	M. POSTRANECKY	
A	23-05-2003	- - - -	D. J. BECKETT	M. POSTRANECKY	M. POSTRANECKY	
ISSUE	DATE	MOD NO.	DRN BY.	CHKD.	APPD.	STATUS
USED ON					ATLAS SCT	
					© CCLRC 2003	
CCLRC COUNCIL FOR THE CENTRAL LABORATORY RUTHERFORD APPLETON LABORATORY, CHILTON, OXON OX11 0QX. OF THE RESEARCH COUNCILS						
TITLE <div style="display: flex; justify-content: space-around; align-items: center;"> <div style="text-align: center;">PC3216M</div> <div style="text-align: center;">CIRCUIT</div> </div> <div style="display: flex; justify-content: space-between; align-items: center; margin-top: 10px;"> <div style="text-align: center;">TTC INTERFACE MODULE (TIM-3)</div> <div>54-03</div> </div>						
<div style="display: flex; justify-content: space-between;"> <div style="border: 1px solid black; padding: 5px;">A2-TE-0102-044-14-B</div> <div style="border: 1px solid black; padding: 5px;">TOTAL NO. OF SHEETS</div> <div style="border: 1px solid black; padding: 5px;">16</div> </div>						



B	13-02-2004	TE238	D. J. BECKETT	M. POSTRANECKY	M. POSTRANECKY	
A	23-05-2003	- - - -	D. J. BECKETT	M. POSTRANECKY	M. POSTRANECKY	
ISSUE	DATE	MOD NO.	DRN BY.	CHKD.	APPD.	STATUS
USED ON					ATLAS SCT	
					© CCLRC 2003	
CCLRC COUNCIL FOR THE CENTRAL LABORATORY RUTHERFORD APPLETON LABORATORY, CHILTON, OXON OX11 0QX. OF THE RESEARCH COUNCILS						
TITLE <div style="display: flex; justify-content: space-around; align-items: center;"> <div style="text-align: center;">PC3216M</div> <div style="text-align: center;">CIRCUIT</div> </div> <div style="display: flex; justify-content: space-between; align-items: center; margin-top: 10px;"> <div style="text-align: center;">TTC INTERFACE MODULE (TIM-3)</div> <div>54-03</div> </div>						
<div style="font-family: monospace; font-size: 2em; letter-spacing: 0.5em;">A2-TE-0102-044-15-B</div>						
				TOTAL NO. OF SHEETS		16

