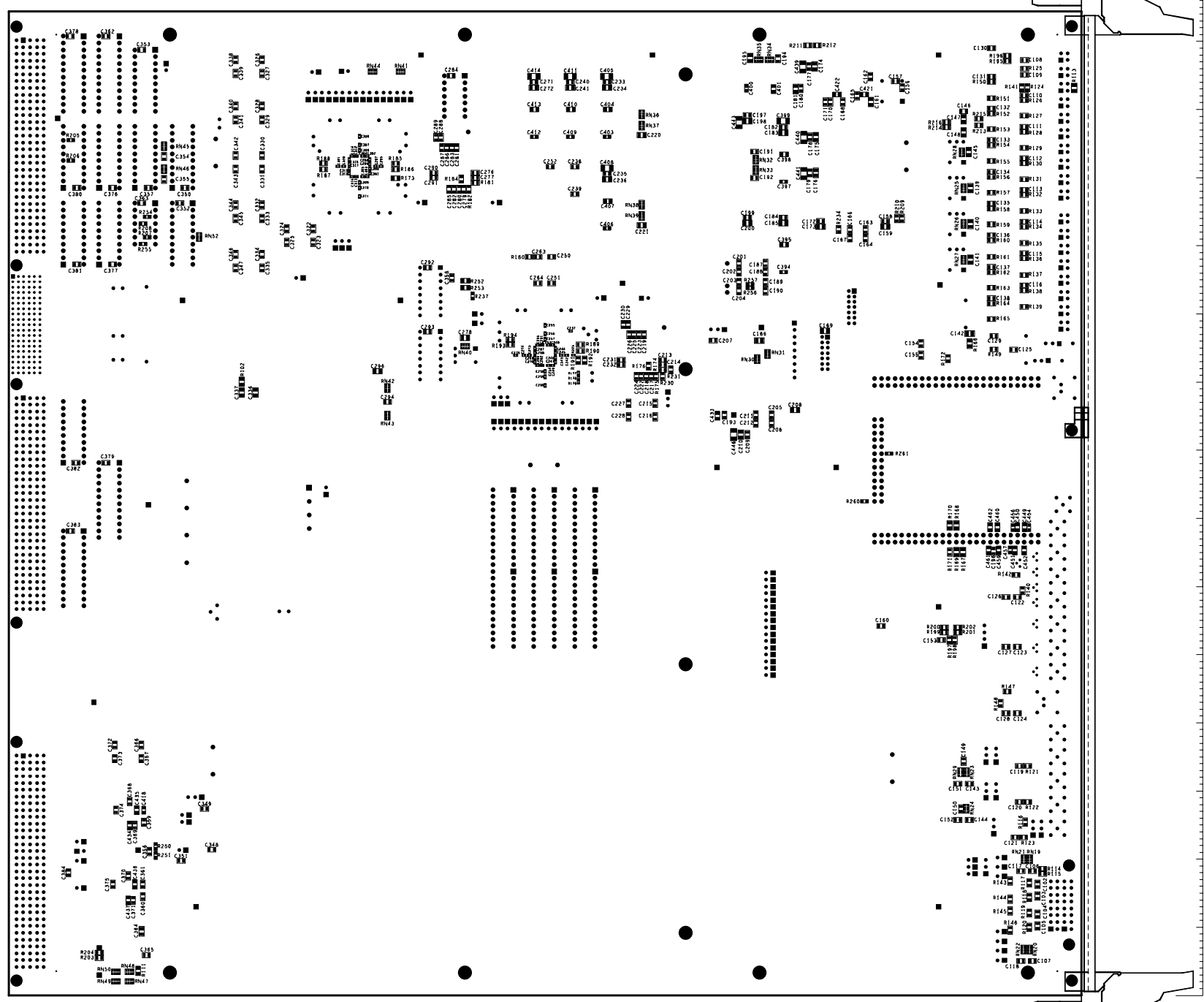




BOARD VIEWED ON 'J' FACE



ASSEMBLY NOTES

- SOLDER PASTE MASTERS AVAILABLE FOR ASSEMBLY OF SURFACE MOUNT COMPONENTS.
- TOP SOLDER PASTE - PC3216M/1 O FACE
- BOTTOM SOLDER PASTE - PC3216M/1 P FACE
- TOP ASSEMBLY DRG. AVAILABLE - A1-TE-0102-046-01-*
- 1 - ENSURE CORRECT ORIENTATION OF COMPONENTS

C	01-12-2004	TE255	D. J. BECKETT	D. J. BALLARD	M. POSTRANECKY	
B	29-07-2004	TE238	D. J. BECKETT	D. J. BALLARD	M. POSTRANECKY	
A	23-05-2003	- - -	D. J. BECKETT	C. P. DAY	M. POSTRANECKY	
ISSUE	DATE	MOD NO.	DRAWN	CHECKED	APPROVED	STATUS
TOLERANCE UNLESS STATED			FINISH		ORIGINAL SCALE 1:1	
MATERIAL & SPEC			REMOVE ANY BURRS		DO NOT SCALE	
			SURFACE TEXTURE micro m		0 50mm	
			✓ UNLESS STATED		CCLRC 2003	
COUNCIL FOR THE CENTRAL LABORATORY RUTHERFORD APPLETON LABORATORY, CHILTON, OXON, OX11 0OX						
TITLE PC3216M BOTTOM ASSEMBLY						
TTC INTERFACE MODULE (TIM-3C)						
A1-TE-0102-046-02-C						