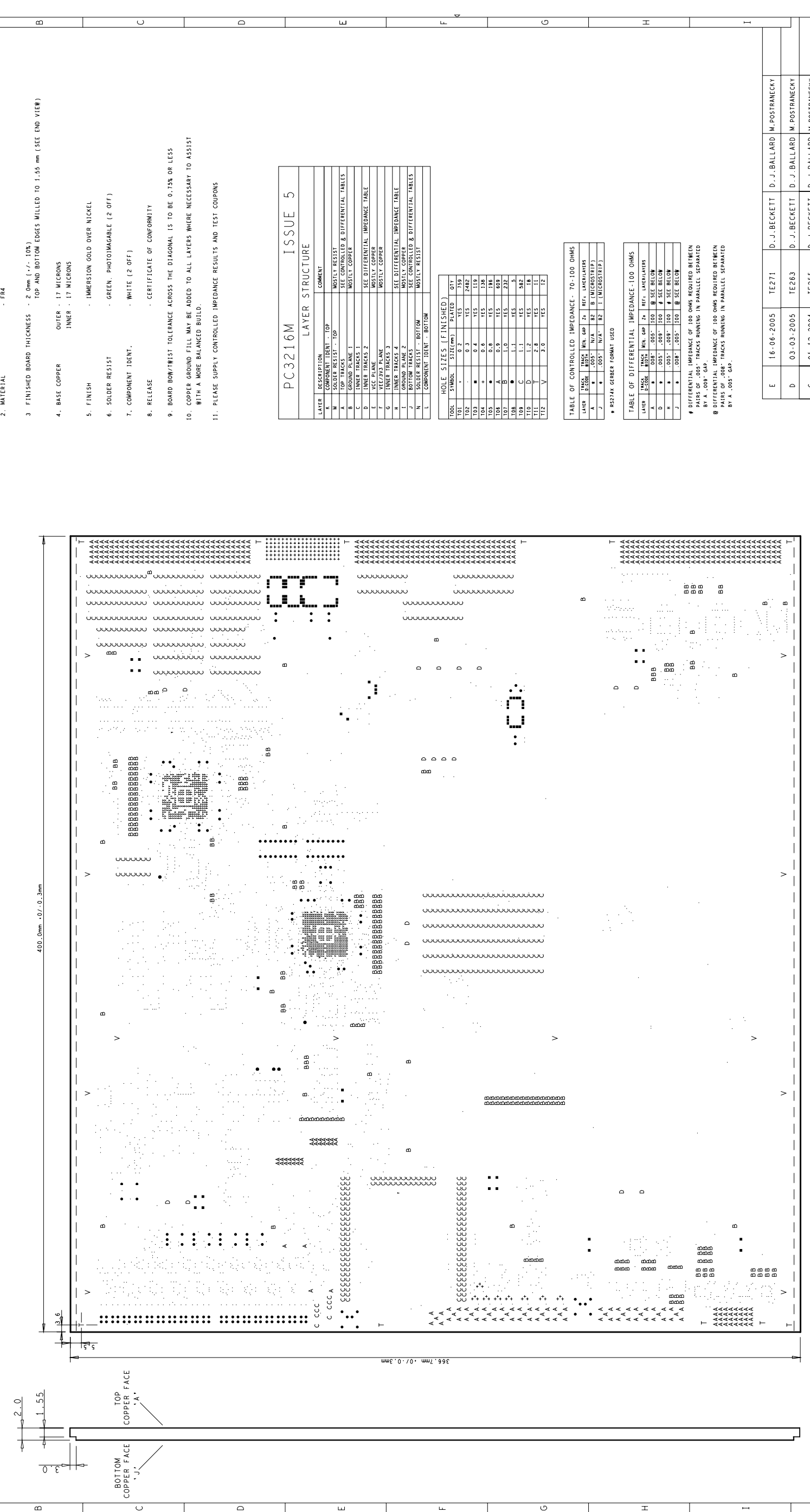


END VIEW OF CARD
NOT TO SCALE



MANUFACTURING NOTES

1. STYLE - MULTILAYER (10 LAYERS)
2. MATERIAL - FR4
3. FINISHED BOARD THICKNESS - 2.0mm (+/- 10%)
TOP AND BOTTOM EDGES MILLED TO 1.55 mm (SEE END VIEW)
4. BASE COPPER
OUTER - 17 MICRONS
INNER - 17 MICRONS
5. FINISH - IMMERSION GOLD OVER NICKEL
6. SOLDER RESIST - GREEN, PHOTODIAGNABLE (2 OFF)
7. COMPONENT IDENT. - WHITE (2 OFF)
8. RELEASE - CERTIFICATE OF CONFORMITY
9. BOARD BOW/TWIST TOLERANCE ACROSS THE DIAGONAL IS TO BE 0.75% OR LESS
10. COPPER GROUND FILL MAY BE ADDED TO ALL LAYERS WHERE NECESSARY TO ASSIST WITH A MORE BALANCED BUILD.
11. PLEASE SUPPLY CONTROLLED IMPEDANCE RESULTS AND TEST COUPONS

PC3216M LAYER STRUCTURE ISSUE 5

LAYER	DESCRIPTION	COMMENT
M	SOLDER RESIST - TOP	MOSTLY RESIST
A	TOP TRACKS	SEE CONTROLLED & DIFFERENTIAL TABLES
B	GROUND PLANE 1	MOSTLY COPPER
C	INNER TRACKS 1	SEE DIFFERENTIAL IMPEDANCE TABLE
D	INNER TRACKS 2	MOSTLY COPPER
E	INNER TRACKS 3	MOSTLY COPPER
F	INNER TRACKS 4	SEE DIFFERENTIAL IMPEDANCE TABLE
G	GROUND PLANE 2	MOSTLY COPPER
H	INNER TRACKS 5	SEE DIFFERENTIAL IMPEDANCE TABLE
I	INNER TRACKS 6	MOSTLY COPPER
J	SOLDER RESIST - BOTTOM	MOSTLY RESIST

HOLE SIZES (FINISHED)

TOOL	SYMBOL	SIZE (mm)	PLATED	QTY
T01	Y	0.2	YES	759
T02	Y	0.3	YES	2482
T03	Y	0.4	YES	1138
T04	Y	0.6	YES	118
T05	Y	0.8	YES	198
T06	A	0.9	YES	609
T07	B	1.0	YES	232
T08	C	1.1	YES	185
T09	D	1.2	YES	98
T10	D	1.2	YES	98
T11	T	2.8	YES	11
T12	V	3.0	YES	12

TABLE OF CONTROLLED IMPEDANCE - 70-100 OHMS

LAYER	TRACK WIDTH	MIN. GAP	Z ₀ REF.	LAYERLAPERS
A	.005	N/A	B2	B (MICROSTRIP)
J	.005	N/A	B2	T (MICROSTRIP)

TABLE OF DIFFERENTIAL IMPEDANCE - 100 OHMS

LAYER	TRACK WIDTH	MIN. GAP	Z ₀ REF.	LAYERLAPERS
A	.008	.005	100	SEE BELOW
D	.005	.009	100	SEE BELOW
H	.005	.009	100	SEE BELOW
J	.008	.005	100	SEE BELOW

DIFFERENTIAL IMPEDANCE OF 100 OHMS REQUIRED BETWEEN PAIRS OF .005" TRACKS RUNNING IN PARALLEL SEPARATED BY A .009" GAP.
B DIFFERENTIAL IMPEDANCE OF 100 OHMS REQUIRED BETWEEN PAIRS OF .008" TRACKS RUNNING IN PARALLEL SEPARATED BY A .005" GAP.

E	16-06-2005	TE271	D. J. BECKETT	D. J. BALLARD	M. POSTRANECKY
D	03-03-2005	TE263	D. J. BECKETT	D. J. BALLARD	M. POSTRANECKY
C	01-12-2004	TE255	D. J. BECKETT	D. J. BALLARD	M. POSTRANECKY
B	29-07-2004	TE238	D. J. BECKETT	D. J. BALLARD	M. POSTRANECKY
A	23-05-2003	-	D. J. BECKETT	C. P. DAY	M. POSTRANECKY

ISSUE DATE MOD NO. DRAWN CHECKED APPROVED STATUS

FINISH SEE NOTES ORIGINAL SCALE 1:1
TOLERANCE UNLESS STATED REMOVE ANY BURRS DO NOT SCALE
GENERAL +/- 0.1 mm SURFACE TEXTURE micro m
HOLES +/- 0.05 mm
SEE NOTES
UNLESS STATED