

Input Power, 7-15 V

to last board

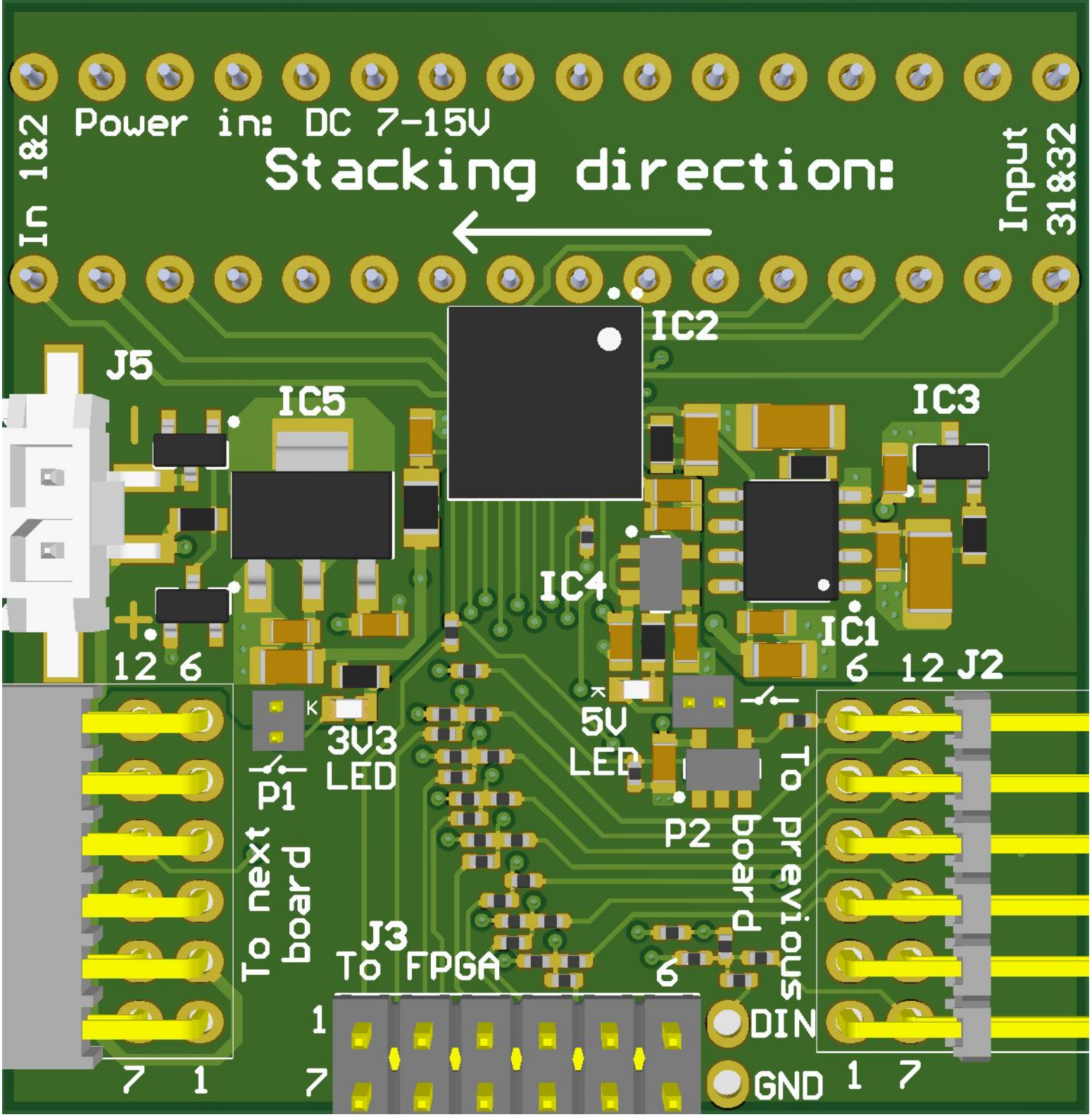
to first board (FPGA)

To FPGA Board

Two additional pins, because connector is to big

part number for female pins for photodiodes: MillMax 0566-1-15-15-21-27-10-0

Drawn:	R&D	Martin Debevc	7.10.2020
Checked:	-	Marko Levičnik	-
Issued:	-	-	-
Acceptance	-	-	-
Cannot open file C:\Users\MartinDebevc\Desktop\CL testna	Title: DDC232_IF_BRD		
	Size: A3	Type: SCH	DWG NO.:
			REV: B
			Sheet 1 of 1





DDC232_IF_BRD_rev.B
September 2020
Drawn by: Martin Debevc

4

In 182

Power in: DC 7-15V

Stacking direction:



Input 31832

