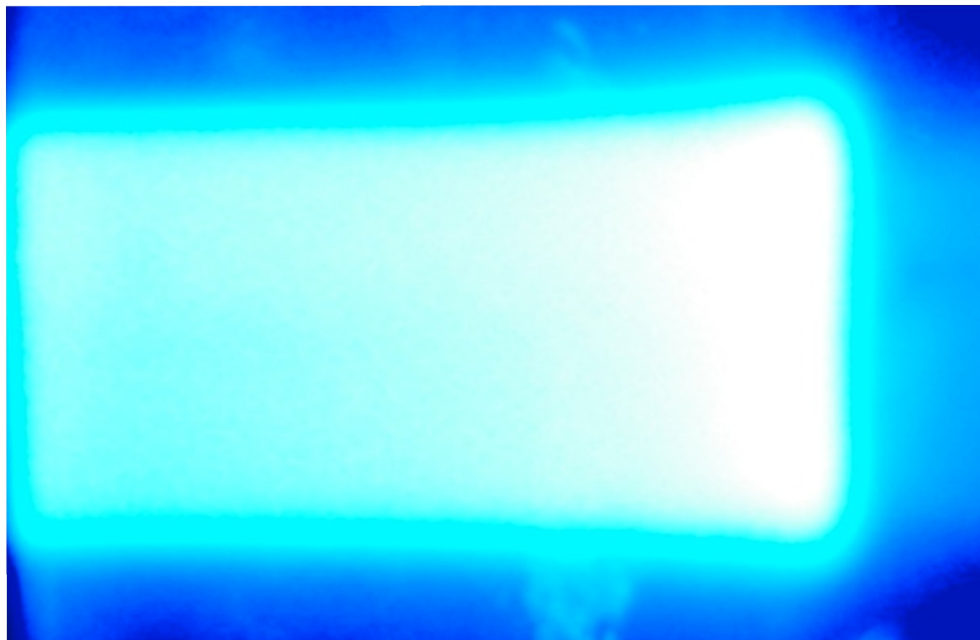


# Analysis of image data (png, jpeg...) for DSLR images (and ISDI sensor?)

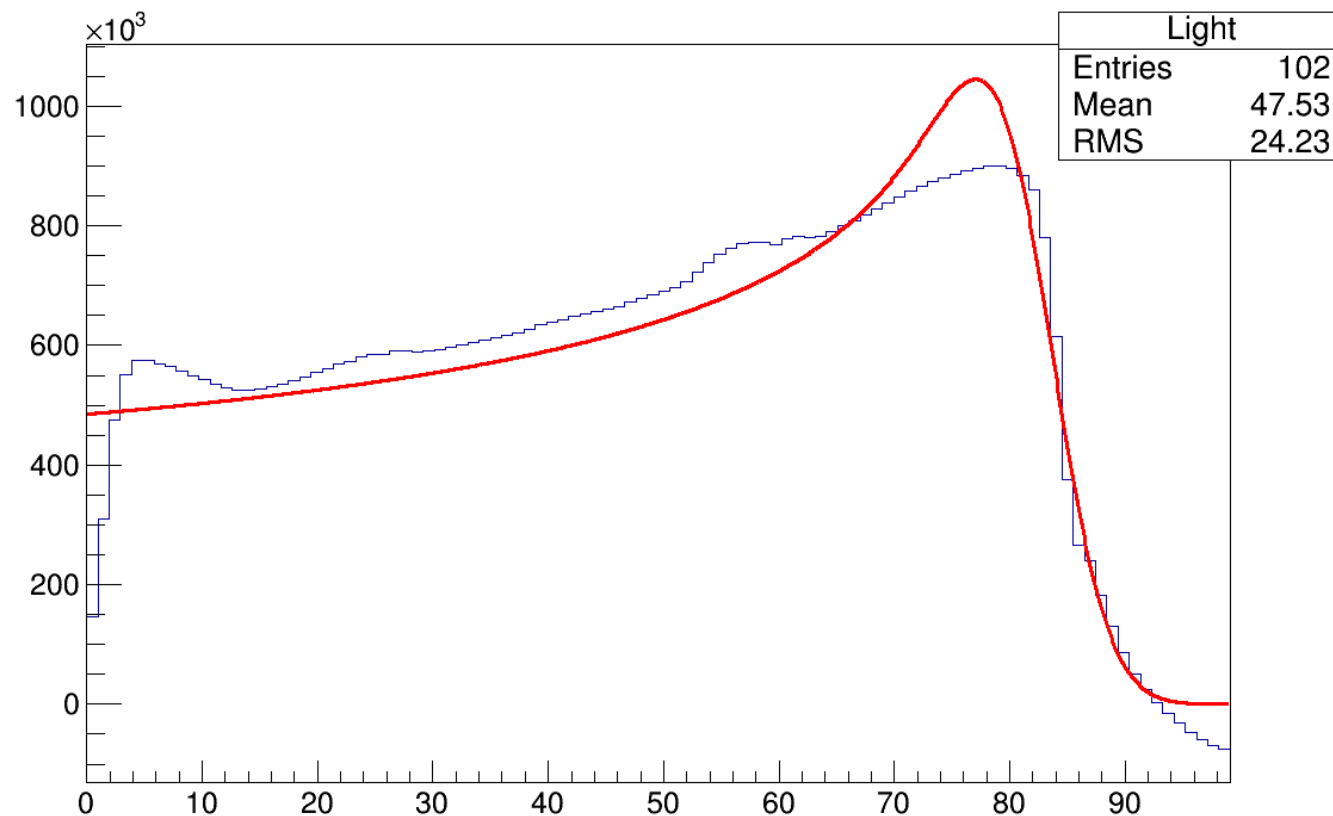
# Tools

- Use python to convert image data to text file
- PIL: library for image processing
- Test image: Simon's picture of scintillator block



# First Test Result

- X axis chosen arbitrarily (what was the energy?)
- Reflections distort image
- Background subtraction tricky



# To Do (software)

- My computer was upgraded to Centos7 → fit doesn't work any more (ROOT integrator fails)
- Find a way to deal with very different scintillator slice thicknesses
- Data format of ISDI sensor?
- Make everything more smooth and ready-to-use for users