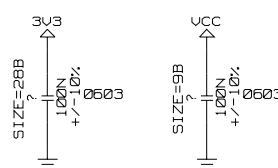
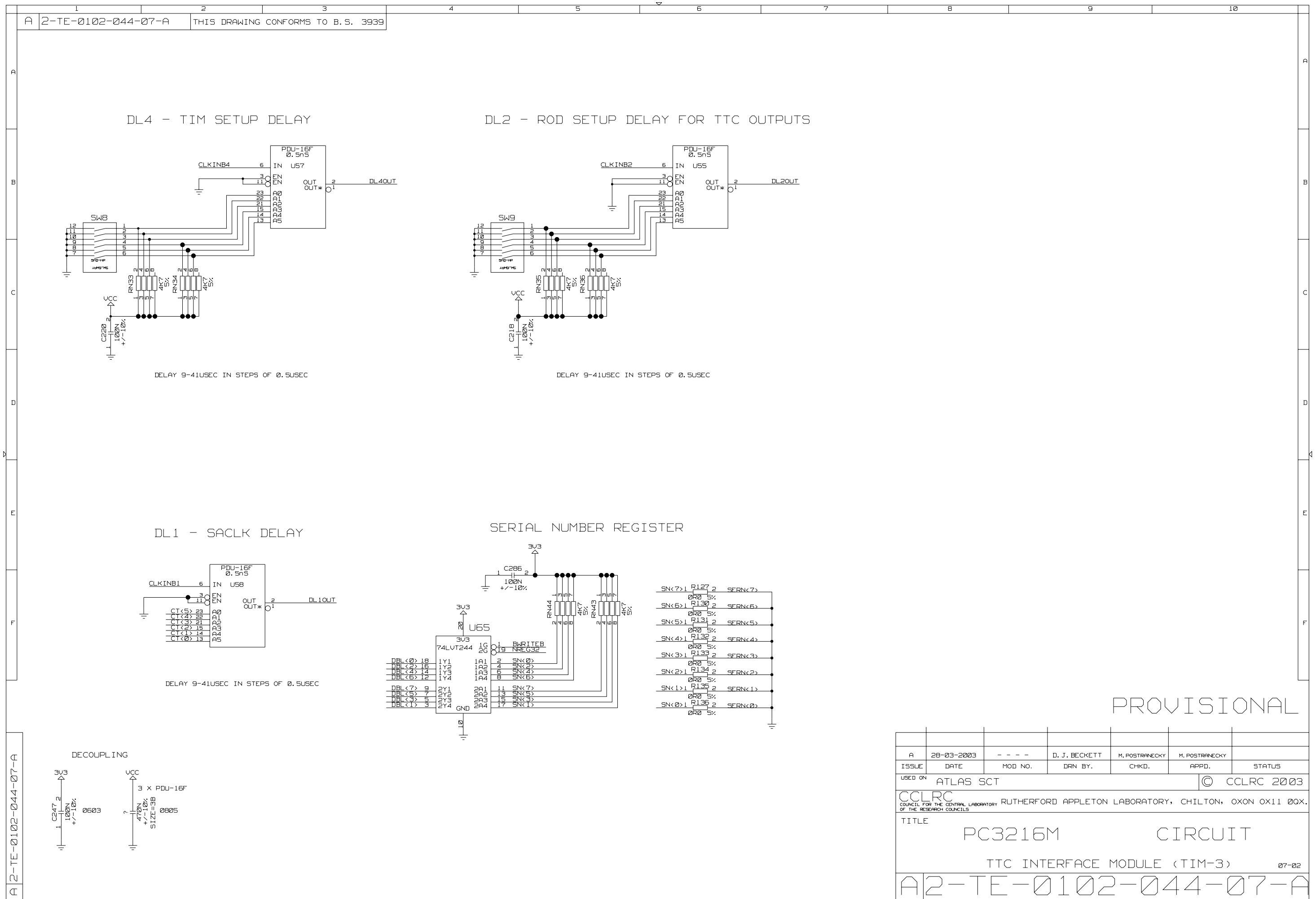


A	28-03-2003	- - - -	D. J. BECKETT	M. POSTRANECKY	M. POSTRANECKY		
ISSUE	DATE	MOD NO.	DRN BY.	CHKD.	APPD.		STATUS
USED ON	ATLAS SCT					© CCLRC 2003	
CCLRC COUNCIL FOR THE CENTRAL LABORATORY OF THE RESEARCH COUNCILS							
RUTHERFORD APPLETON LABORATORY, CHILTON, OXON OX11 0QX							
TITLE	PC3216M			CIRCUIT			
TTC INTERFACE MODULE (TIM-3)							07-02
A2-TE-0102-044-06-F							

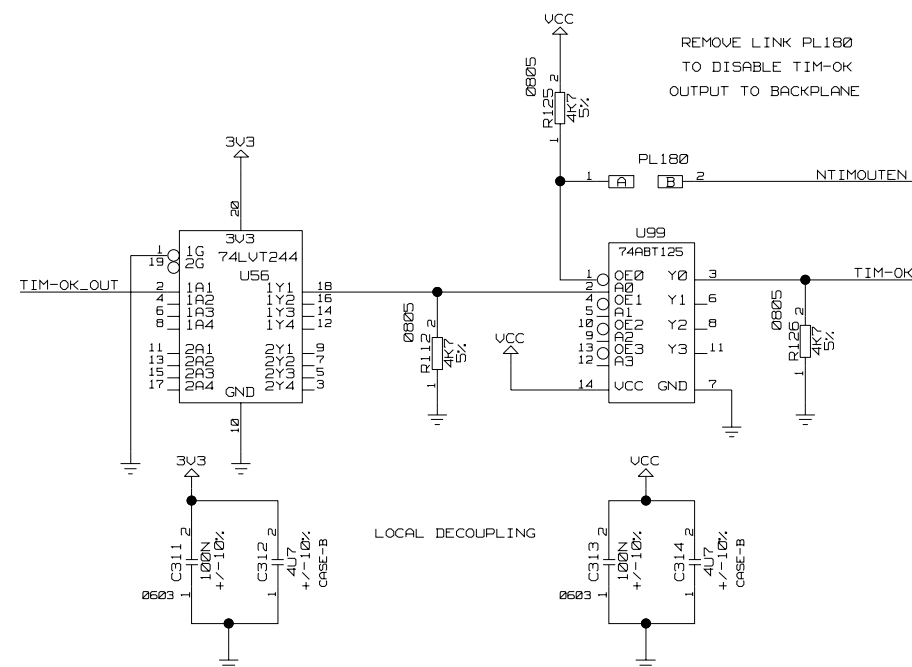


PROVISIONAL

A	28-03-2003	- - - -	D. J. BECKETT	M. POSTRANECKY	M. POSTRANECKY				
ISSUE	DATE	MOD NO.	DRN BY.	CHKD.	APPD.				STATUS
USED ON ATLAS SCT						© CCLRC 2003			
CCLRC RUTHERFORD APPLETON LABORATORY, CHILTON, OXON OX11 0QX COUNCIL FOR THE CENTRAL LABORATORY OF THE RESEARCH COUNCILS									
TITLE PC3216M CIRCUIT									
TTC INTERFACE MODULE (TIM-3) 07-02									
A2-TE-0102-044-06-F									



PROVISIONAL



A	28-03-2003	- - - -	D. J. BECKETT	M. POSTRAINECKY	M. POSTRAINECKY	
ISSUE	DATE	MOD NO.	DRN BY.	CHKD.	APPD.	STATUS
USED ON ATLAS SCT					© CCLRC 2003	
CCLRC COUNCIL FOR THE CENTRAL LABORATORY OF THE RESEARCH COUNCILS						
RUTHERFORD APPLETON LABORATORY, CHILTON, OXON OX11 0QX.						
TITLE						
PC3216M CIRCUIT						
TTC INTERFACE MODULE (TIM-3) 07-02						
A2-TE-0102-044-13-A						