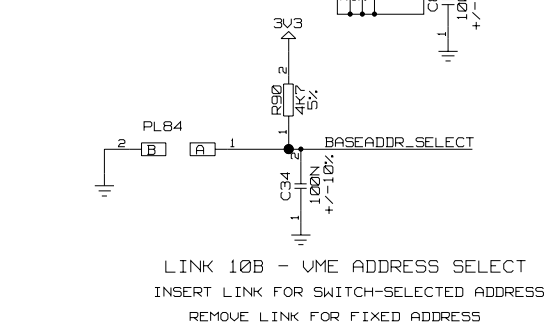
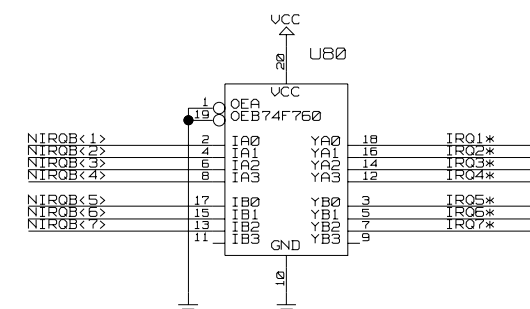
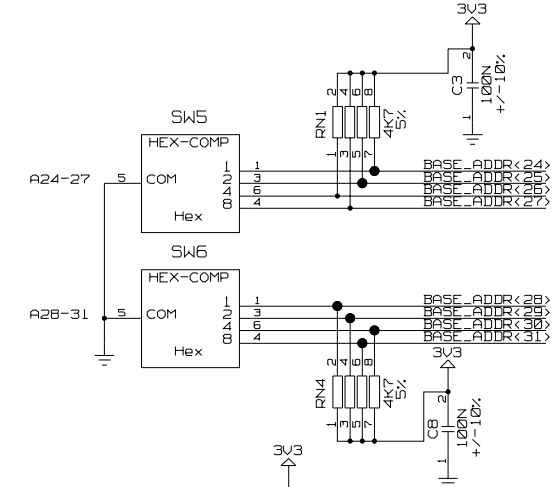
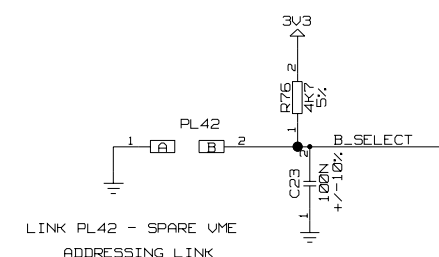
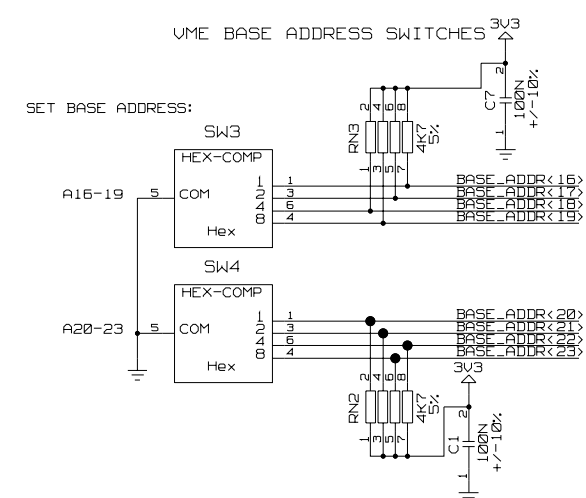
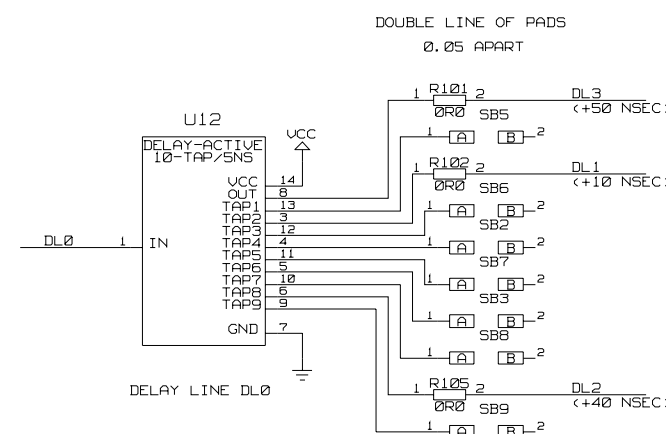
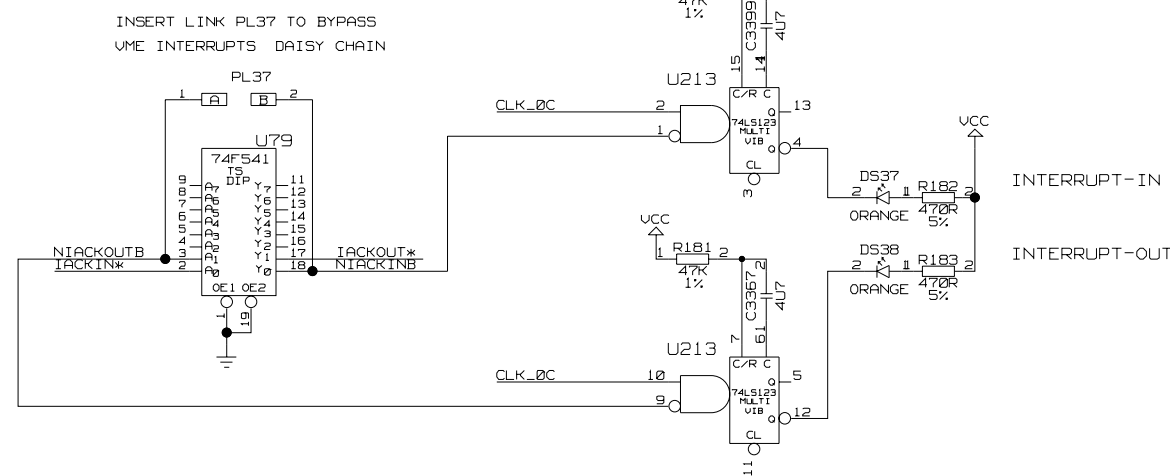


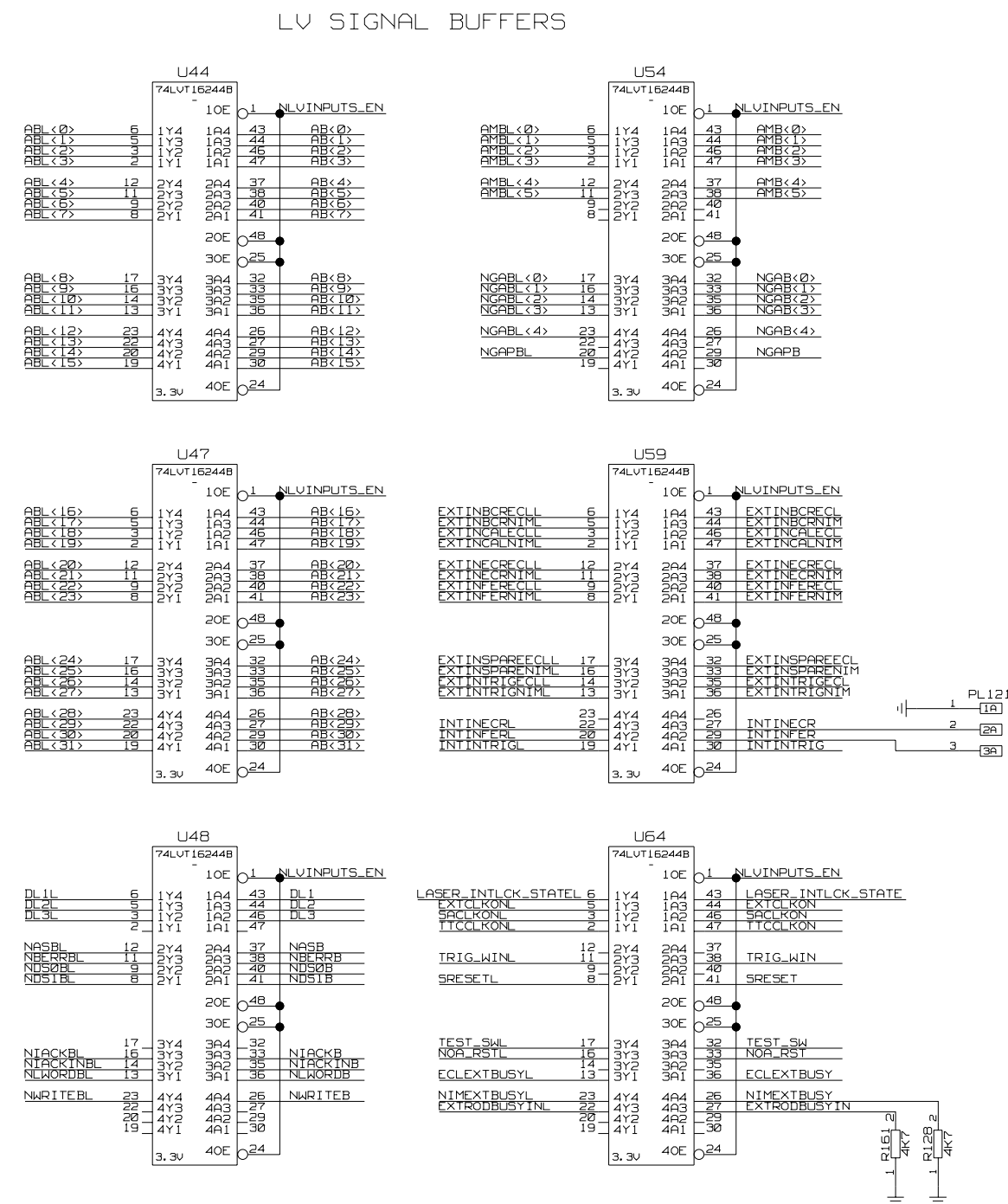
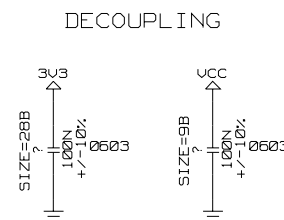
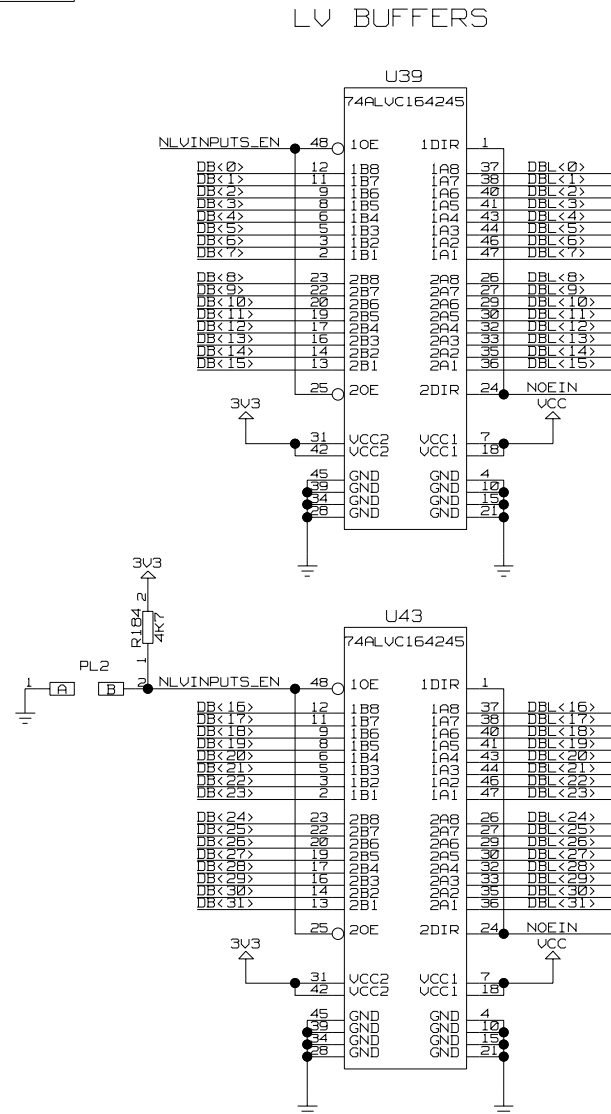
VME DELAYS AND BASE SELECT



PROVISIONAL

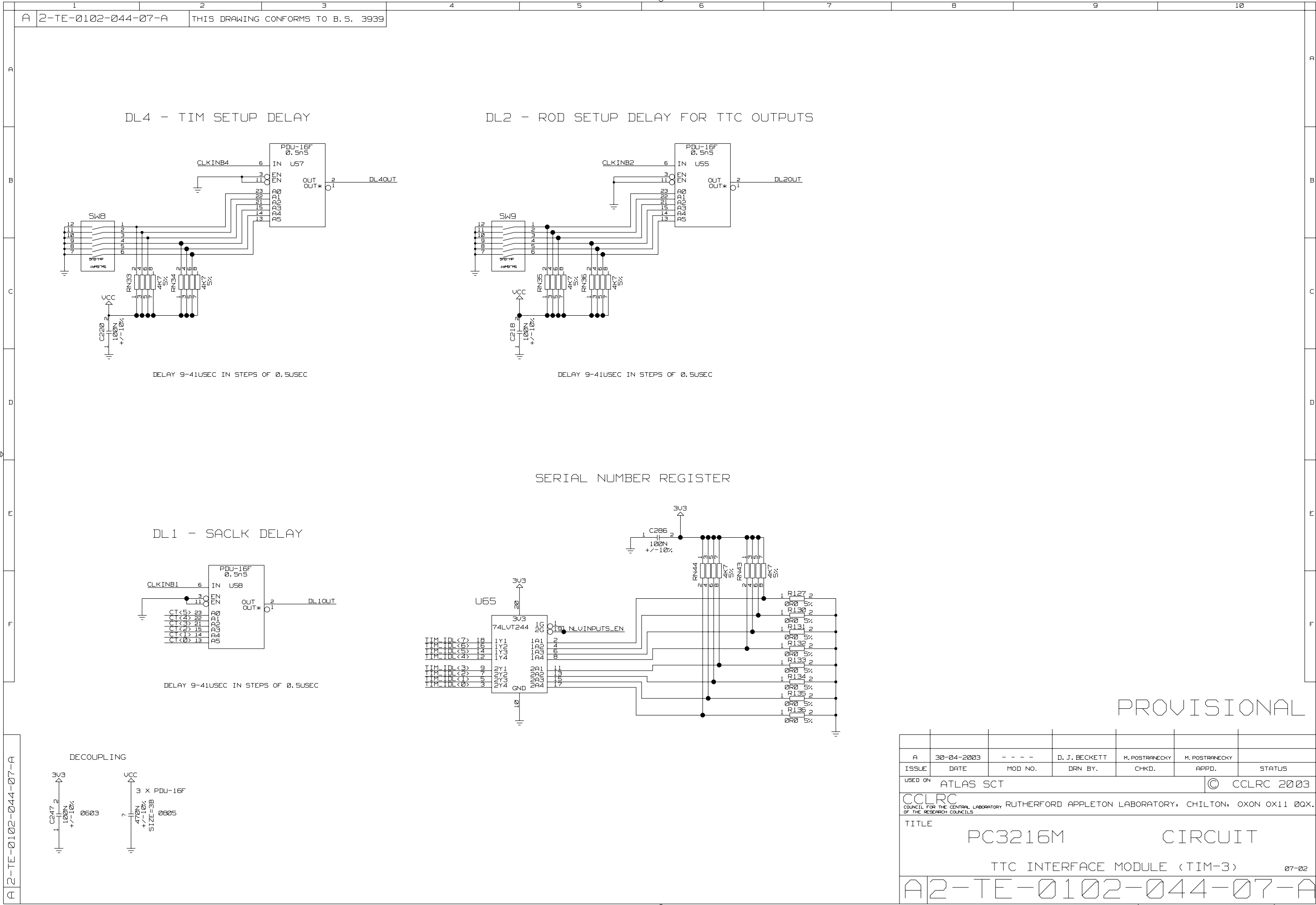


A	30-04-2003	- - - -	D. J. BECKETT	M. POSTRANECKY	M. POSTRANECKY		
ISSUE	DATE	MOD NO.	DRN BY.	CHKD.	APPD.	STATUS	
USED ON ATLAS SCT						© CCLRC 2003	
CCLRC <small>COUNCIL FOR THE CENTRAL LABORATORY OF THE RESEARCH COUNCILS</small> RUTHERFORD APPLETON LABORATORY, CHILTON, OXON OX11 0QX.							
TITLE PC3216M CIRCUIT TTC INTERFACE MODULE (TIM-3)							
A2-TE-0102-044-05-A							



PROVISIONAL

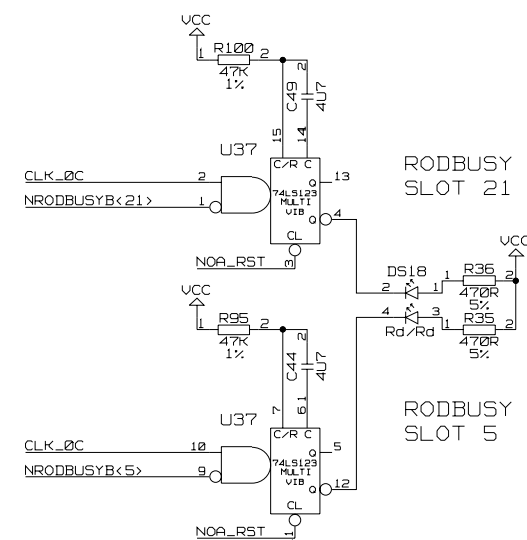
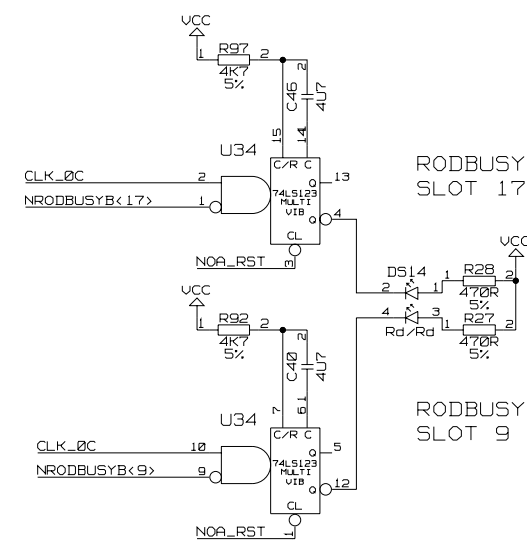
A	30-04-2003	- - - -	D. J. BECKETT	M. POSTRANECKY	M. POSTRANECKY	
ISSUE	DATE	MOD NO.	DRN BY.	CHKD.	APPD.	STATUS
USED ON					ATLAS SCT	
					© CCLRC 2003	
CCLRC COUNCIL FOR THE CENTRAL LABORATORY OF THE RESEARCH COUNCILS						
RUTHERFORD APPLETON LABORATORY, CHILTON, OXON OX11 0QX.						
TITLE						
PC3216M			CIRCUIT			
TTC INTERFACE MODULE (TIM-3)						
07-02						
A2-TE-0102-044-06-F						



PROVISIONAL

A	30-04-2003	- - - -	D. J. BECKETT	M. POSTRANECKY	M. POSTRANECKY	
ISSUE	DATE	MOD NO.	DRN BY.	CHKD.	APPD.	STATUS
USED ON ATLAS SCT					© CCLRC 2003	
CCLRC COUNCIL FOR THE CENTRAL LABORATORY RUTHERFORD APPLETON LABORATORY, CHILTON, OXON OX11 0QX. OF THE RESEARCH COUNCILS						
TITLE PC3216M CIRCUIT						
TTC INTERFACE MODULE (TIM-3) 07-02						
A2-TE-0102-044-07-A						

TOTAL NO. OF SHEETS 16

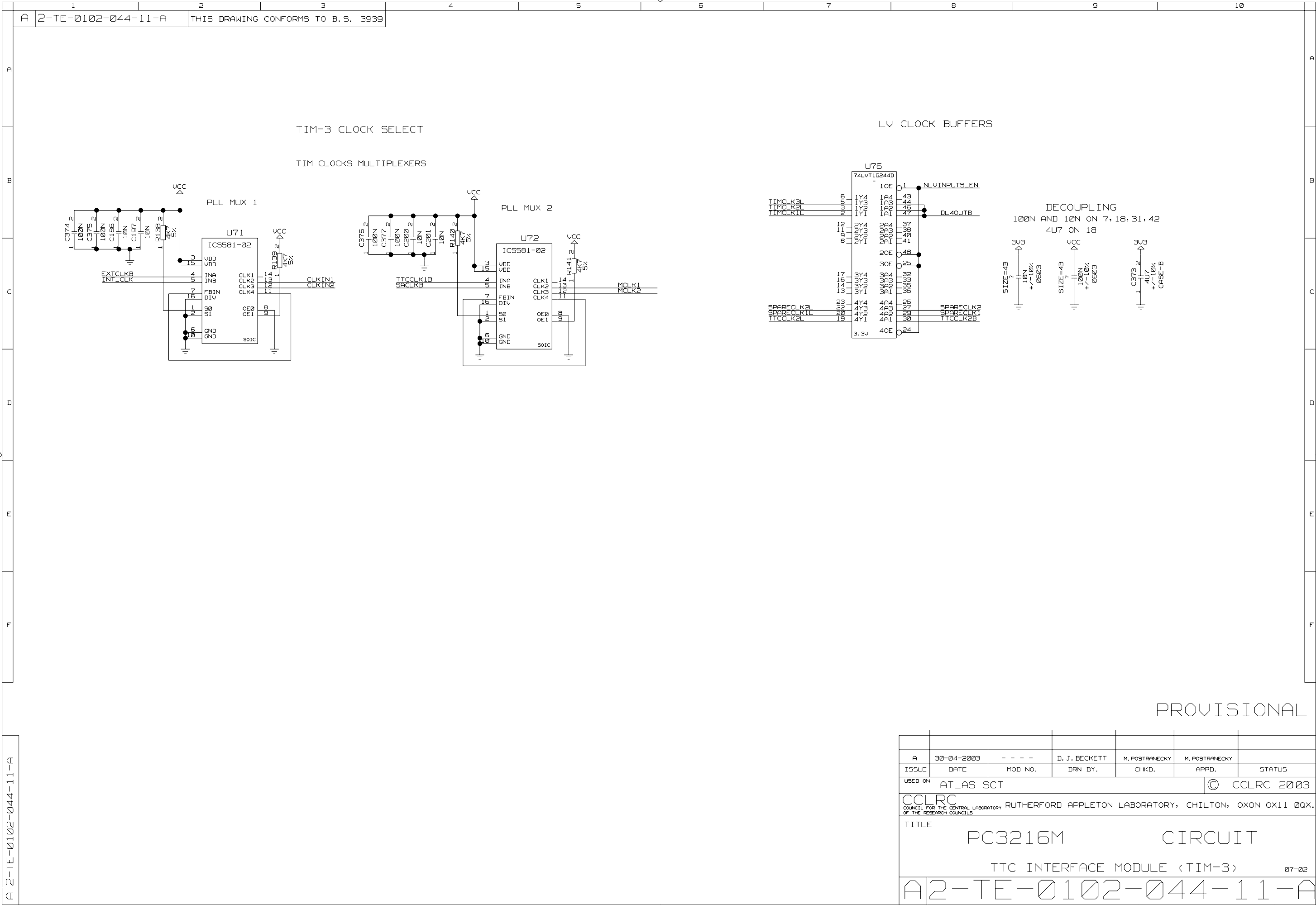


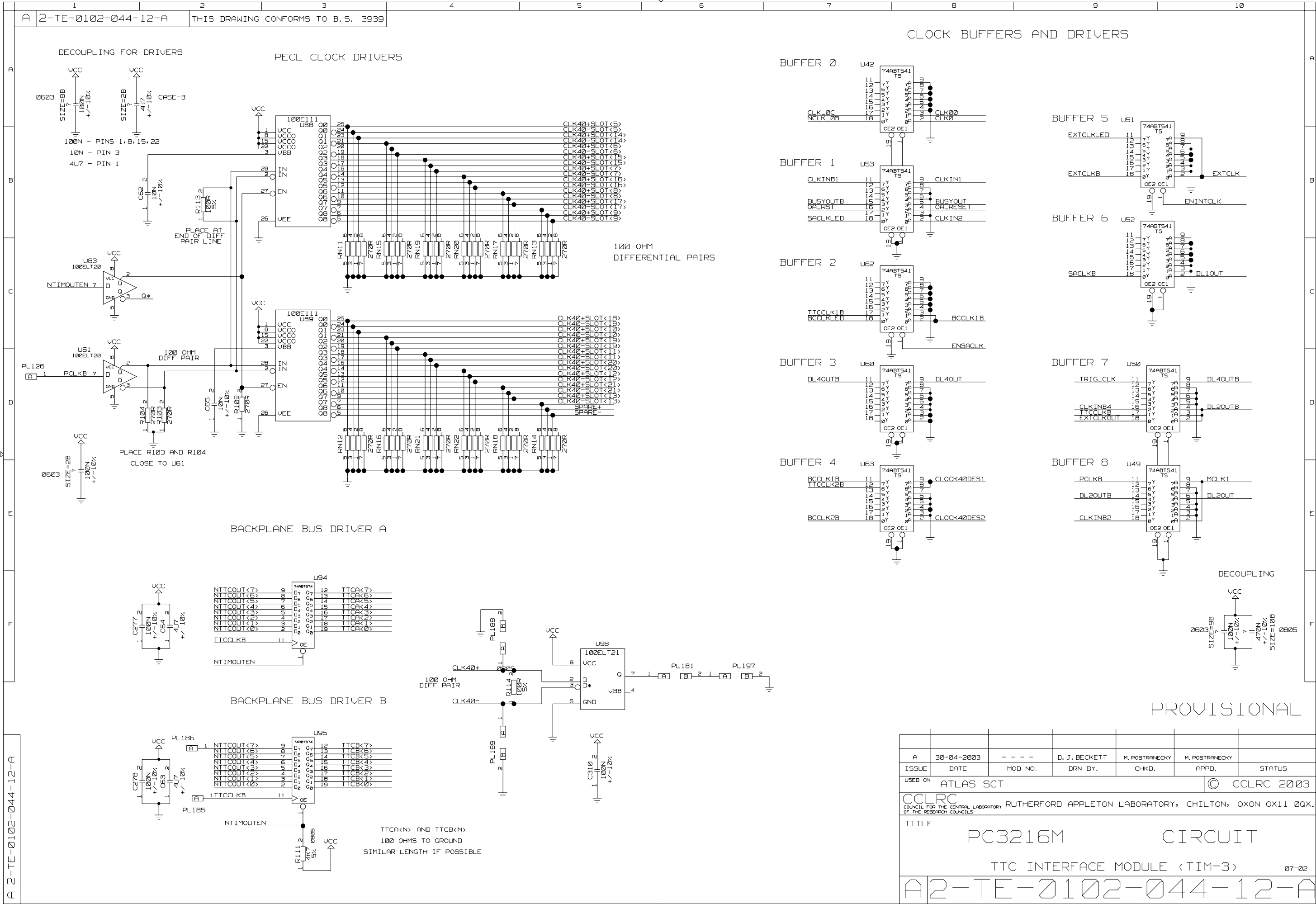
PROVISIONAL

A	30-04-2003	- - - -	D. J. BECKETT	M. POSTRANECKY	M. POSTRANECKY		
ISSUE	DATE	MOD NO.	DRN BY.	CHKD.	APPD.		STATUS
USED ON						ATLAS SCT	
						© CCLRC 2003	
CCLRC COUNCIL FOR THE CENTRAL LABORATORY OF THE RESEARCH COUNCILS							
RUTHERFORD APPLETON LABORATORY, CHILTON, OXON OX11 0QX							
TITLE							
PC3216M				CIRCUIT			
TTC INTERFACE MODULE (TIM-3)							
07-02							
A2-TE-0102-044-09-A							

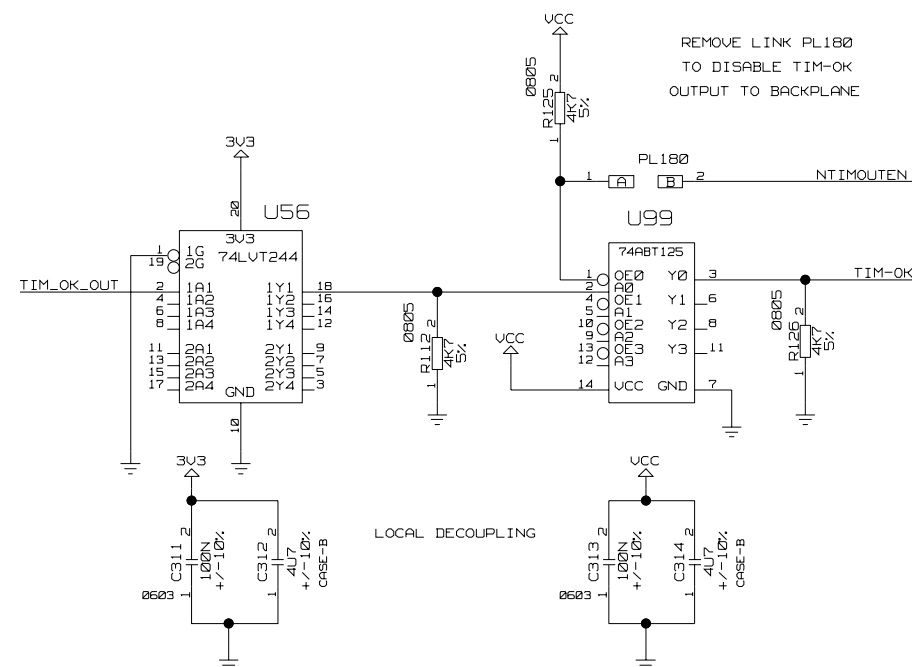
PROVISIONAL

A	30-04-2003	- - - -	D. J. BECKETT	M. POSTRANECKY	M. POSTRANECKY		
ISSUE	DATE	MOD NO.	DRN BY.	CHKD.	APPD.		STATUS
USED ON ATLAS SCT						© CCLRC 2003	
CCLRC COUNCIL FOR THE CENTRAL LABORATORY RUTHERFORD APPLETON LABORATORY, CHILTON, OXON OX11 0QX. OF THE RESEARCH COUNCILS							
TITLE PC3216M CIRCUIT TTC INTERFACE MODULE (TIM-3)							
A2-TE-0102-044-10-A 07-02							

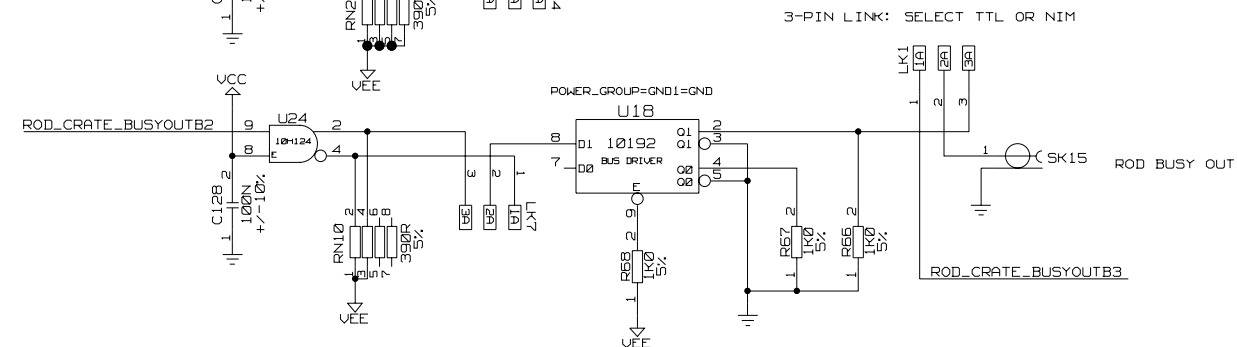
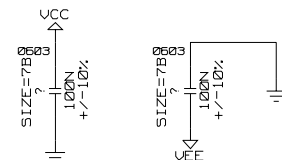
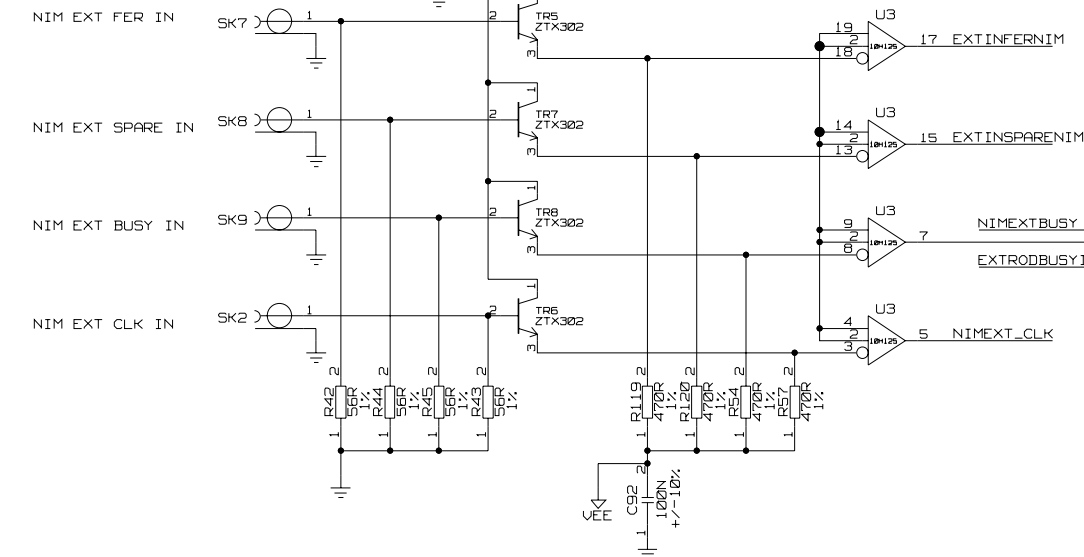




PROVISIONAL



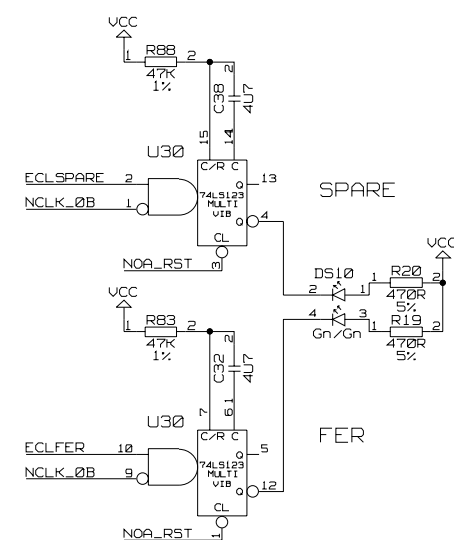
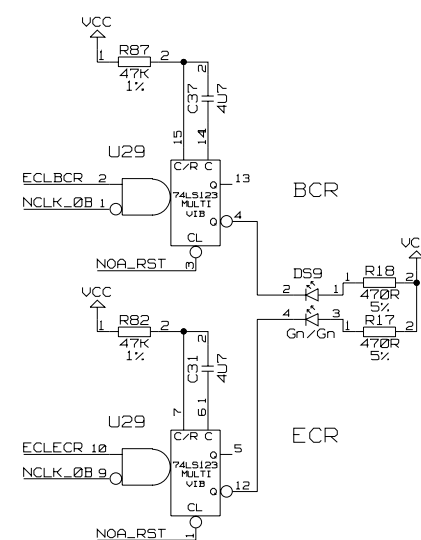
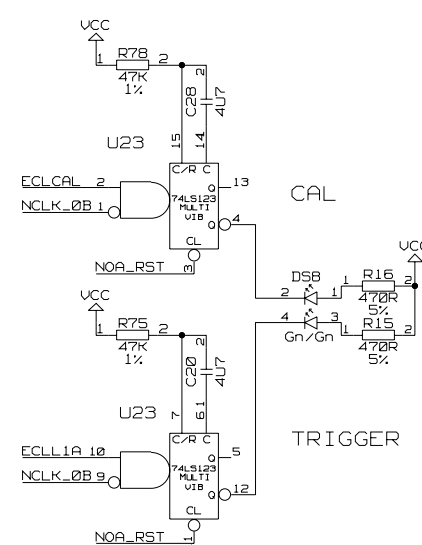
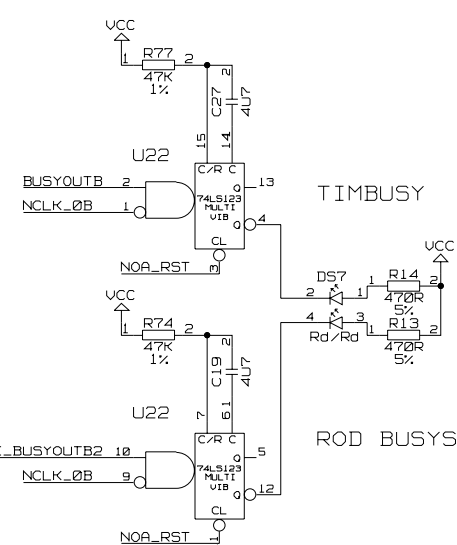
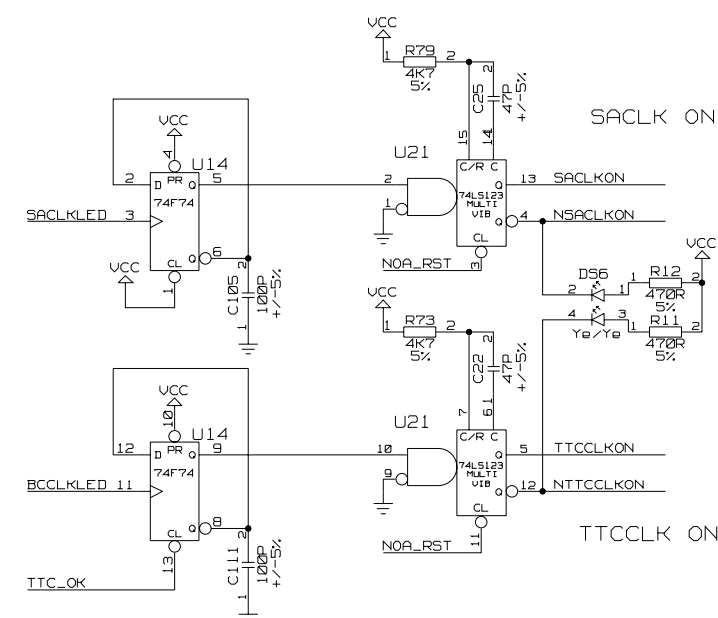
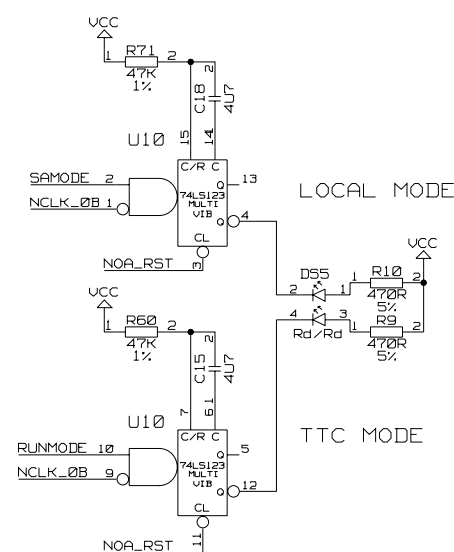
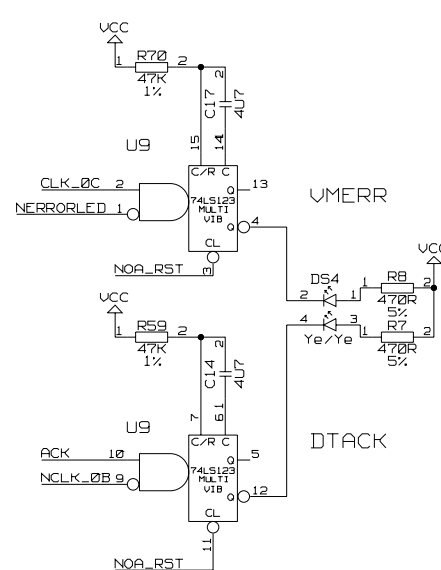
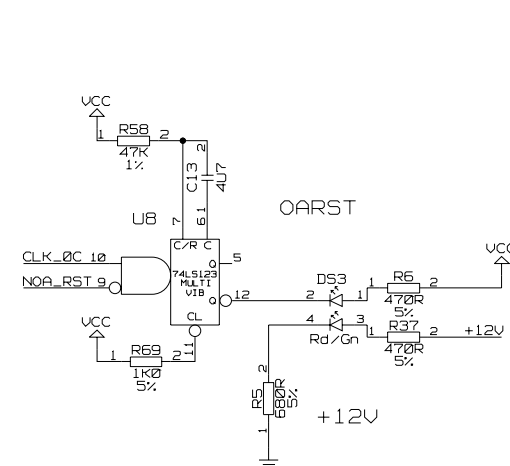
A	30-04-2003	- - - -	D. J. BECKETT	M. POSTRAINECKY	M. POSTRAINECKY	
ISSUE	DATE	MOD NO.	DRN BY.	CHKD.	APPD.	STATUS
USED ON ATLAS SCT					© CCLRC 2003	
CCLRC RUTHERFORD APPLETON LABORATORY, CHILTON, OXON OX11 0QX. COUNCIL FOR THE CENTRAL LABORATORY OF THE RESEARCH COUNCILS						
TITLE PC3216M CIRCUIT TTC INTERFACE MODULE (TIM-3) 07-02						
A2-TE-0102-044-13-A						



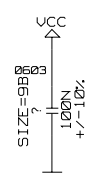
PROVISIONAL

A	30-04-2003	- - - -	D. J. BECKETT	M. POSTRAFNEKY	M. POSTRAFNEKY		
ISSUE	DATE	MOD NO.	DRN BY.	CHKD.	APPD.		STATUS
USED ON						ATLAS SCT	
						© CCLRC 2003	
CCLRC COUNCIL FOR THE CENTRAL LABORATORY OF THE RESEARCH COUNCILS							
RUTHERFORD APPLETON LABORATORY, CHILTON, OXON OX11 0QX							
TITLE							
PC3216M				CIRCUIT			
TTC INTERFACE MODULE (TIM-3)							
07-02							
A2-TE-0102-044-14-F							

A	30-04-2003	- - - -	D. J. BECKETT	M. POSTRANECKY	M. POSTRANECKY	
ISSUE	DATE	MOD NO.	DRN BY.	CHKD.	APPD.	STATUS
USED ON					ATLAS SCT	
					© CCLRC 2003	
CCLRC COUNCIL FOR THE CENTRAL LABORATORY OF THE RESEARCH COUNCILS						
RUTHERFORD APPLETON LABORATORY, CHILTON, OXON OX11 0QX.						
TITLE						
PC3216M CIRCUIT						
TTC INTERFACE MODULE (TIM-3)						
07-02						
A2-TE-0102-044-15-A						



PROVISIONAL



A	30-04-2003	- - - -	D. J. BECKETT	M. POSTRANECKY	M. POSTRANECKY		
ISSUE	DATE	MOD NO.	DRN BY.	CHKD.	APPD.		STATUS
USED ON						ATLAS SCT	
						© CCLRC 2003	
CCLRC COUNCIL FOR THE CENTRAL LABORATORY OF THE RESEARCH COUNCILS							
RUTHERFORD APPLETON LABORATORY, CHILTON, OXON OX11 0QX							
TITLE							
PC3216M				CIRCUIT			
TTC INTERFACE MODULE (TIM-3)							
07-02							
A2-TE-0102-044-16-A							