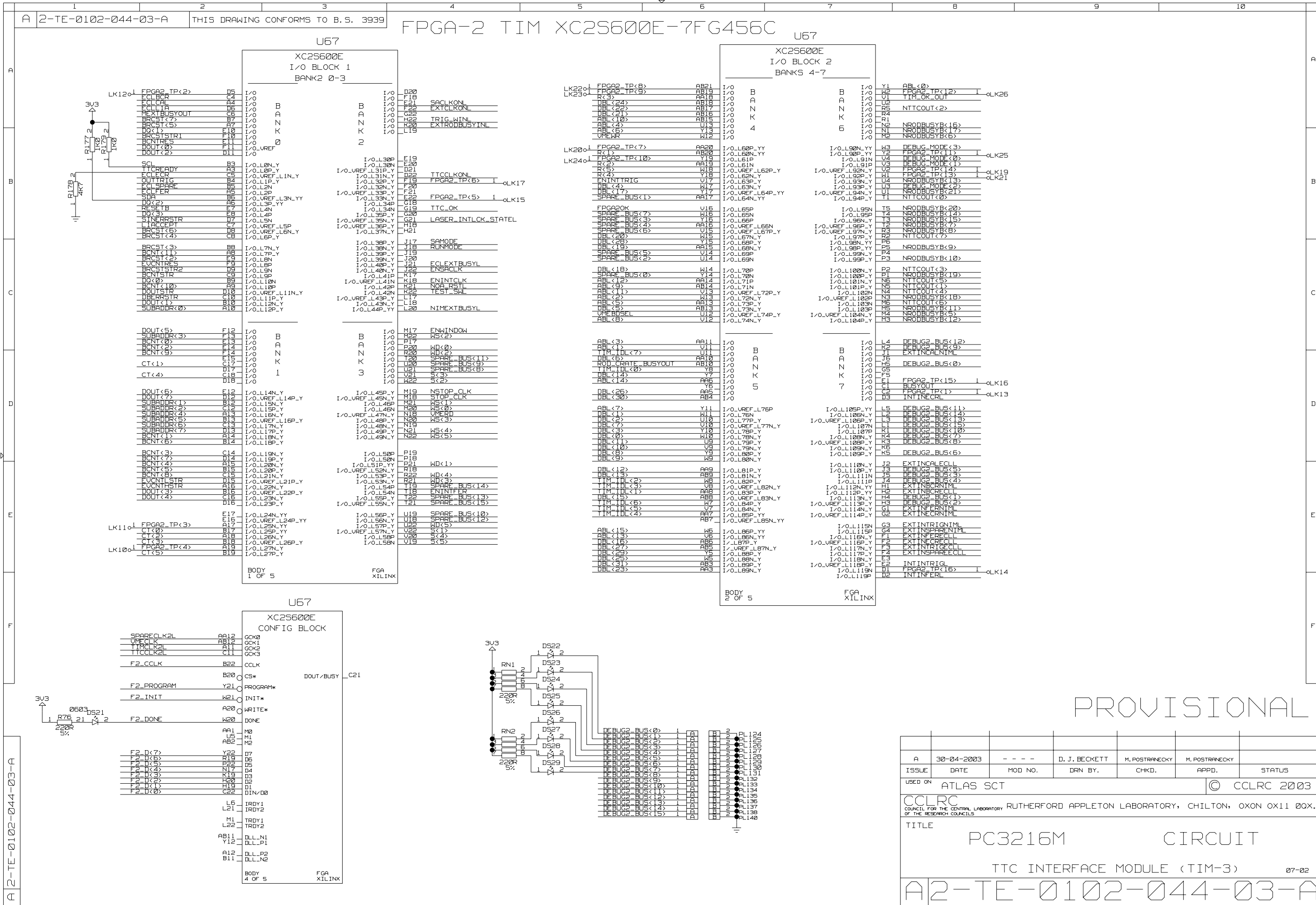
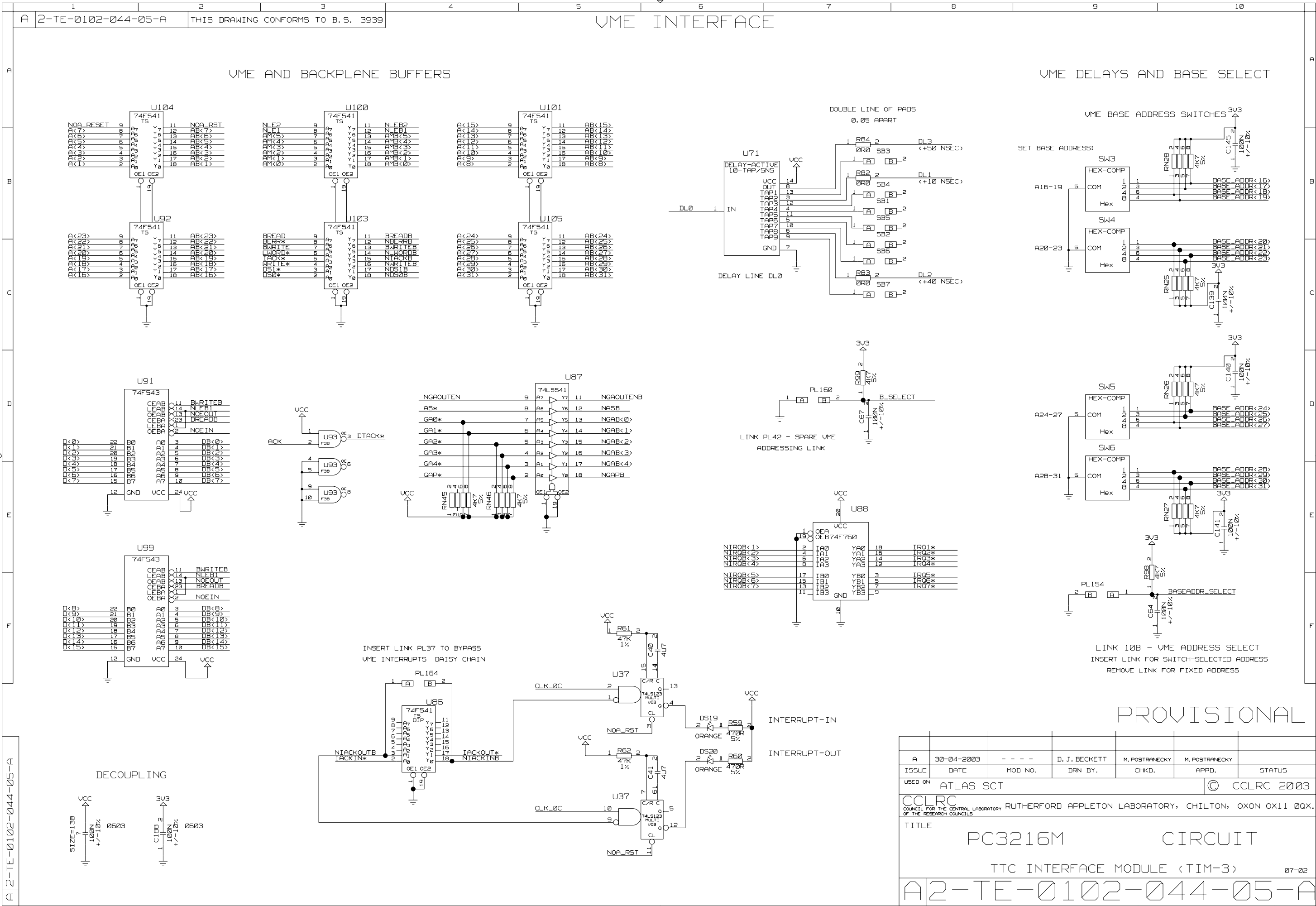


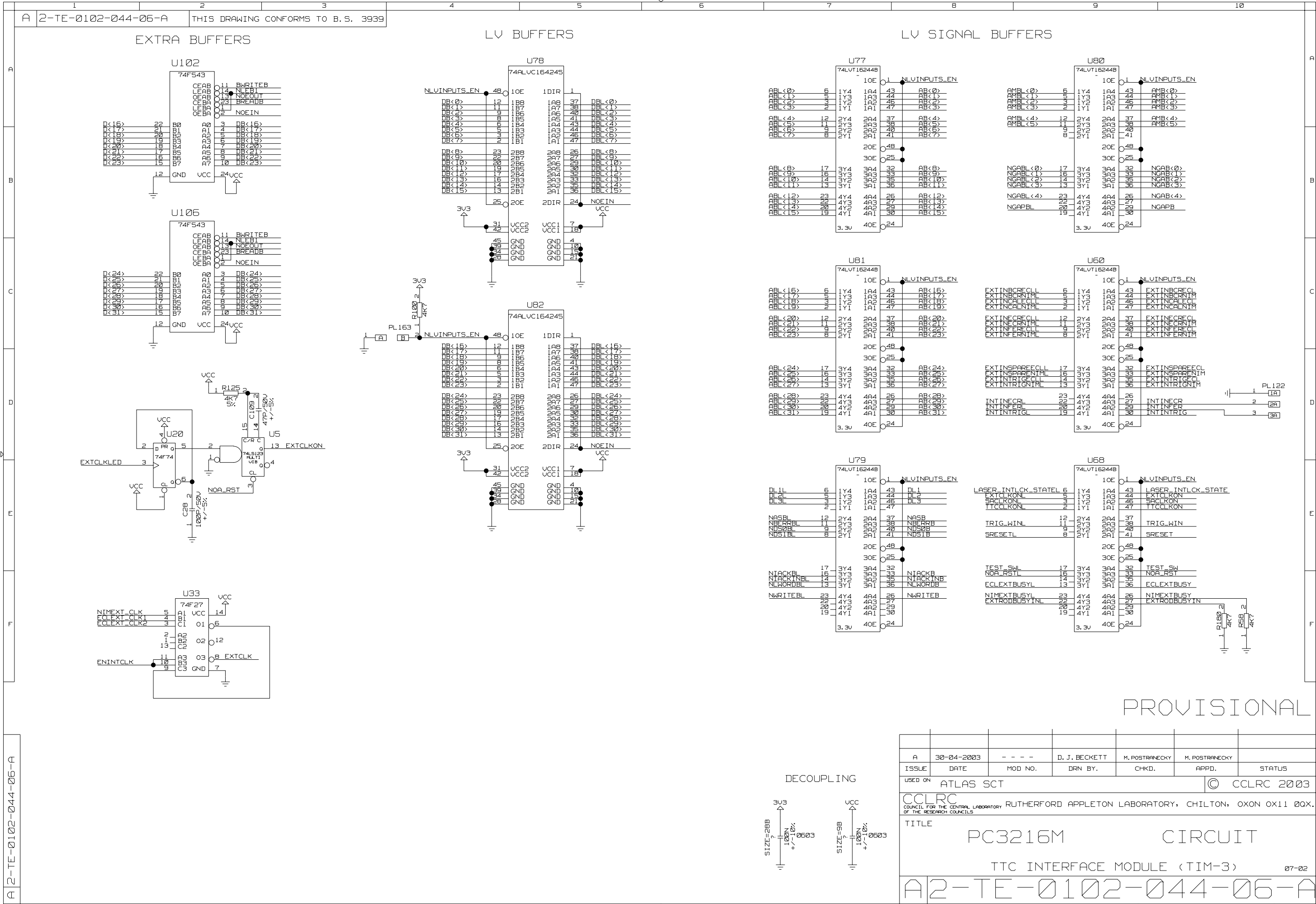
PROVISIONAL

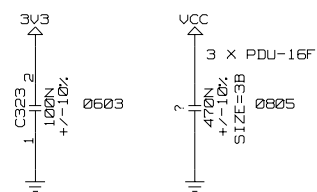
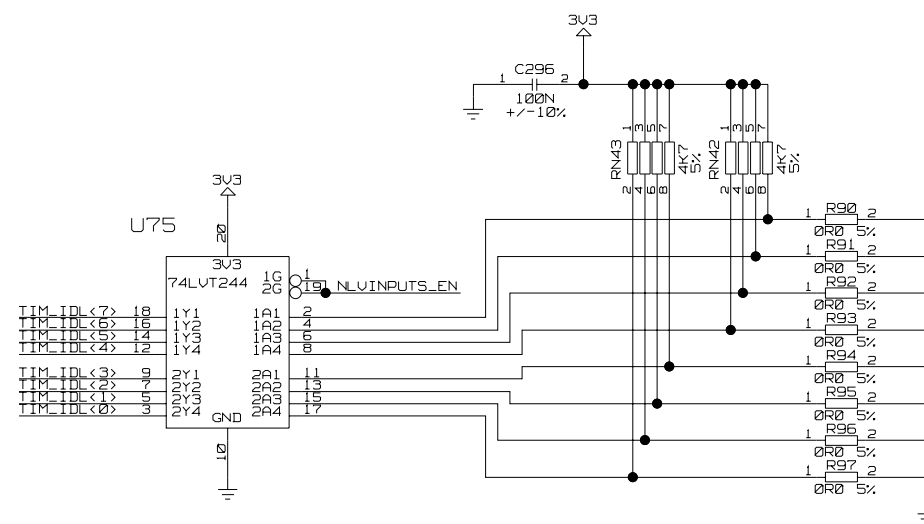
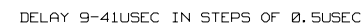
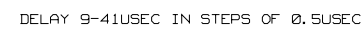
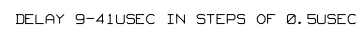
A	30-04-2003	- - - -	D. J. BECKETT	M. POSTRANECKY	M. POSTRANECKY		
ISSUE	DATE	MOD NO.	DRN BY.	CHKD.	APPD.	STATUS	
USED ON ATLAS SCT						© CCLRC 2003	
CCLRC <small>COUNCIL FOR THE CENTRAL LABORATORY OF THE RESEARCH COUNCILS</small> RUTHERFORD APPLETON LABORATORY, CHILTON, OXON OX11 0QX.							
TITLE PC3216M CIRCUIT TTC INTERFACE MODULE (TIM-3) 07-02							
A2-TE-0102-044-02-A							



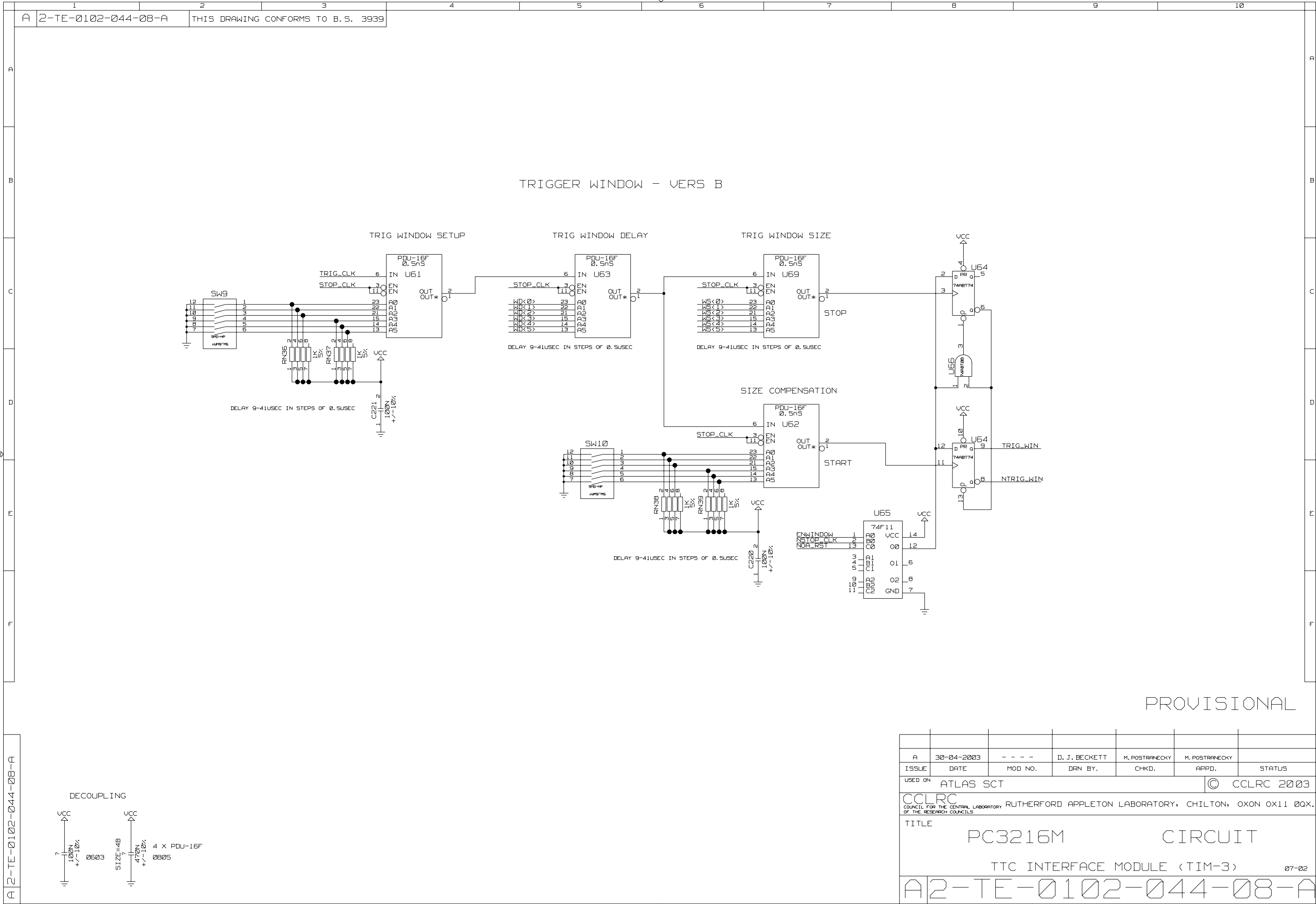


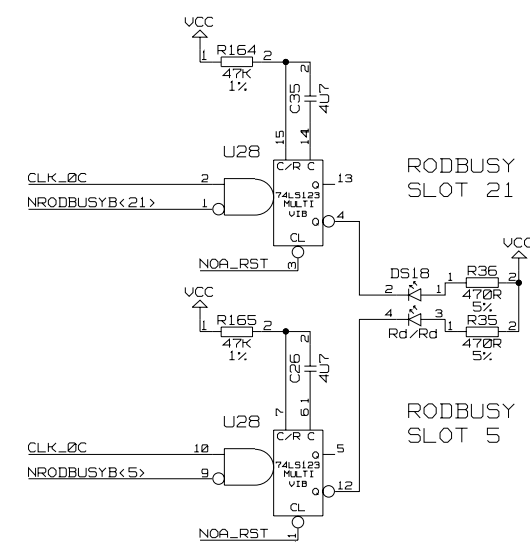
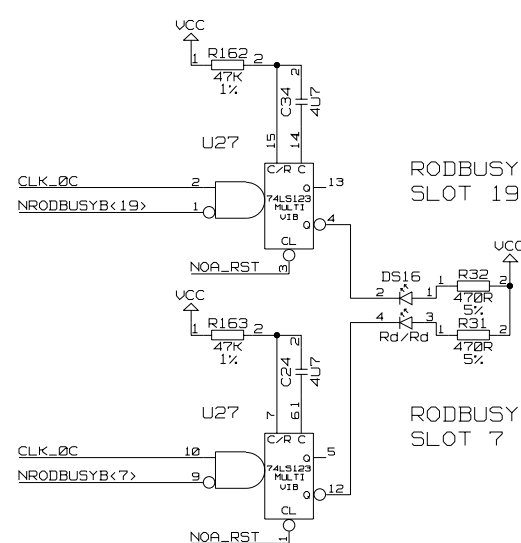
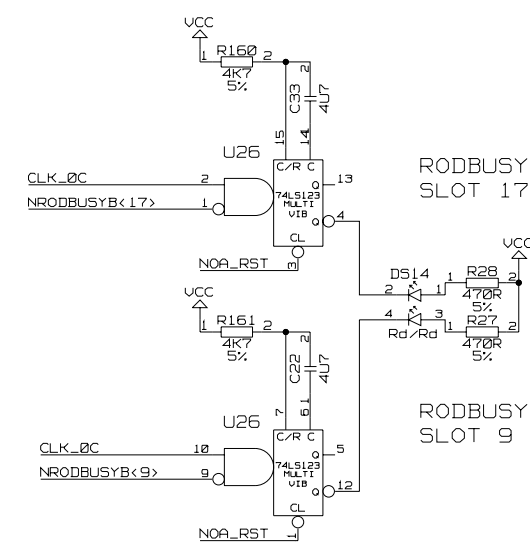
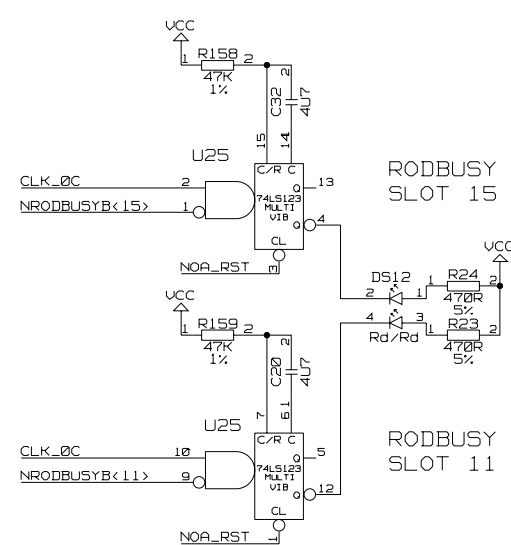
A	30-04-2003	- - - -	D. J. BECKETT	M. POSTRANECKY	M. POSTRANECKY	
ISSUE	DATE	MOD NO.	DRN BY.	CHKD.	APPD.	STATUS
USED ON					ATLAS SCT	
					© CCLRC 2003	
CCLRC COUNCIL FOR THE CENTRAL LABORATORY RUTHERFORD APPLETON LABORATORY, CHILTON, OXON OX11 0QX. OF THE RESEARCH COUNCILS						
TITLE						
PC3216M CIRCUIT						
TTC INTERFACE MODULE (TIM-3) 07-02						
A2-TE-0102-044-05-A						



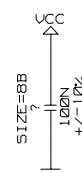


A	30-04-2003	- - - -	D. J. BECKETT	M. POSTRAINEKY	M. POSTRAINEKY		
ISSUE	DATE	MOD NO.	DRN BY.	CHKD.	APPD.	STATUS	
USED ON ATLAS SCT						© CCLRC 2003	
CCLRC COUNCIL FOR THE CENTRAL LABORATORY OF THE RESEARCH COUNCILS RUTHERFORD APPLETON LABORATORY, CHILTON, OXON OX11 0QX.							
TITLE <div style="display: flex; justify-content: space-between; align-items: center;"> PC3216M CIRCUIT </div> <div style="display: flex; justify-content: space-between; align-items: center; margin-top: 10px;"> TTC INTERFACE MODULE (TIM-3) 07-02 </div>							
A2-TE-0102-044-07-A							





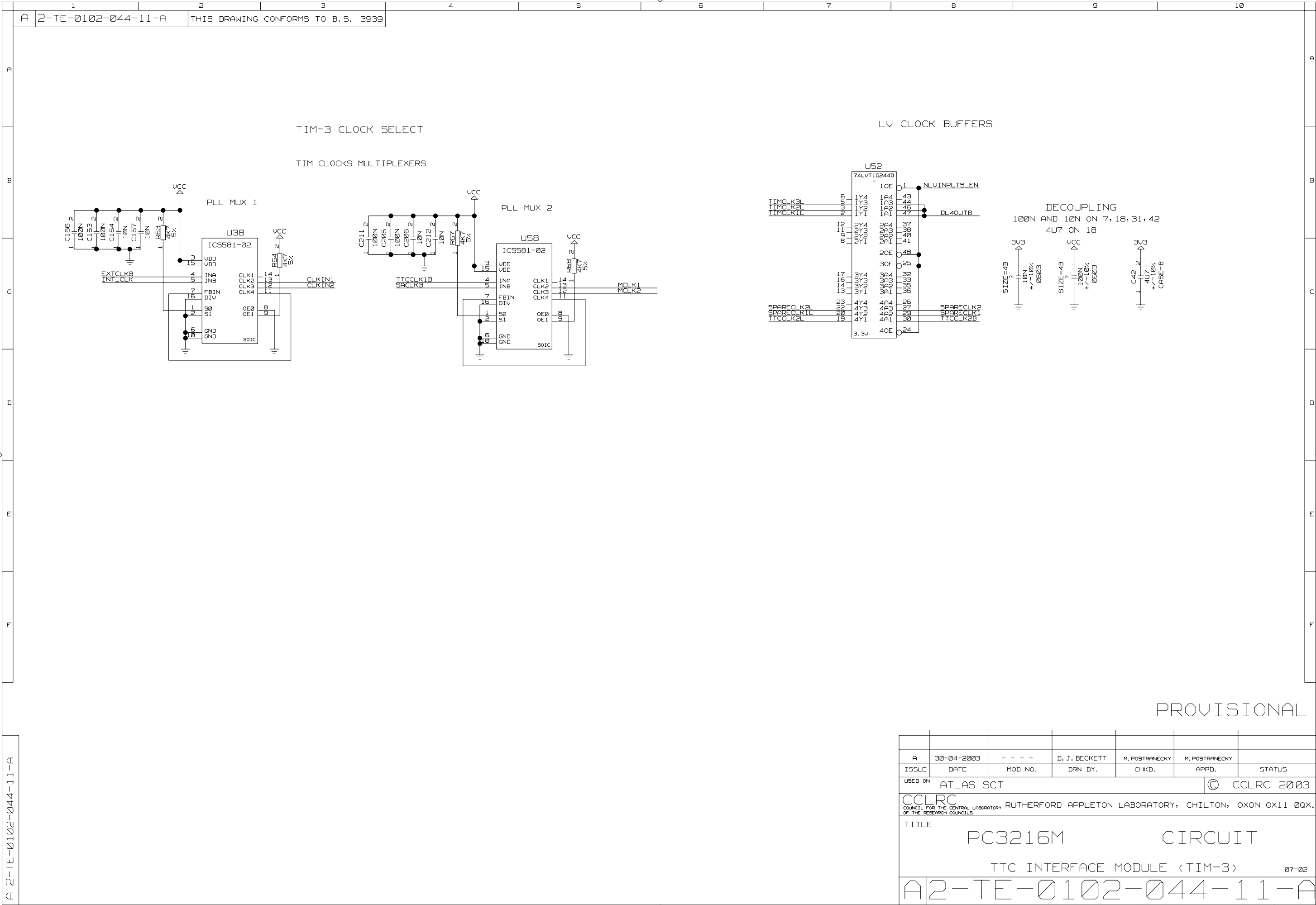
PROVISIONAL



A	30-04-2003	- - - -	D. J. BECKETT	M. POSTRANECKY	M. POSTRANECKY		
ISSUE	DATE	MOD NO.	DRN BY.	CHKD.	APPD.		STATUS
USED ON ATLAS SCT						© CCLRC 2003	
CCLRC RUTHERFORD APPLETON LABORATORY, CHILTON, OXON OX11 0QX COUNCIL FOR THE CENTRAL LABORATORY OF THE RESEARCH COUNCILS							
TITLE							
PC3216M				CIRCUIT			
TTC INTERFACE MODULE (TIM-3)							
07-02							
A2-TE-0102-044-09-A							

PROVISIONAL

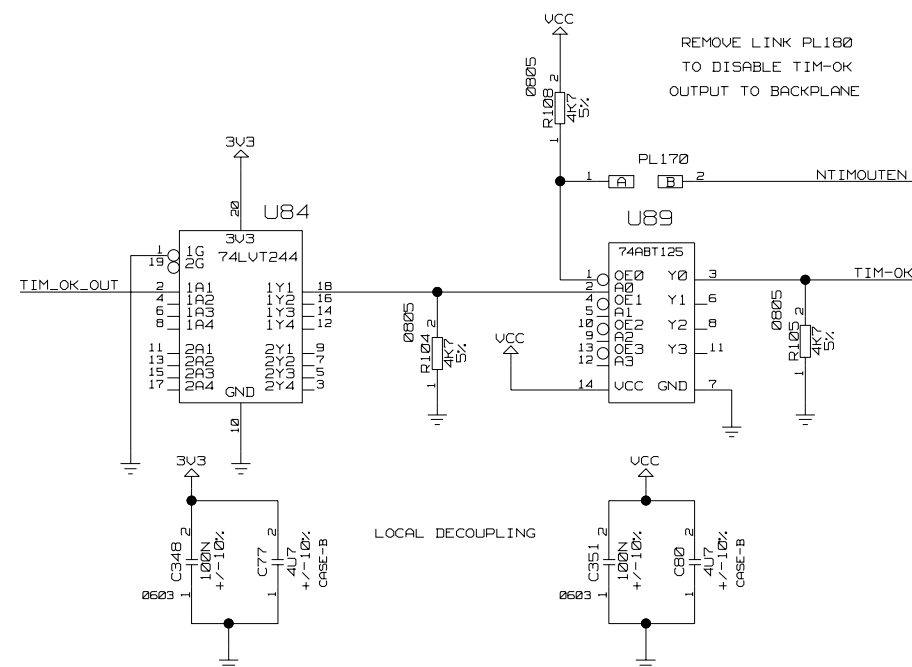
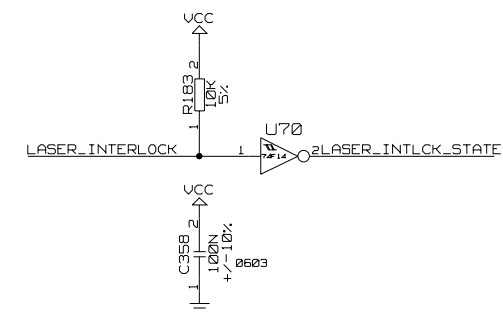
A	30-04-2003	- - - -	D. J. BECKETT	M. POSTRANECKY	M. POSTRANECKY	
ISSUE	DATE	MOD NO.	DRN BY.	CHKD.	APPD.	STATUS
USED ON ATLAS SCT					© CCLRC 2003	
CCLRC COUNCIL FOR THE CENTRAL LABORATORY OF THE RESEARCH COUNCIL						
RUTHERFORD APPLETON LABORATORY, CHILTON, OXON OX11 0QX.						
TITLE						
PC3216M CIRCUIT						
TTC INTERFACE MODULE (TIM-3)						
07-02						
A2-TE-0102-044-10-A						



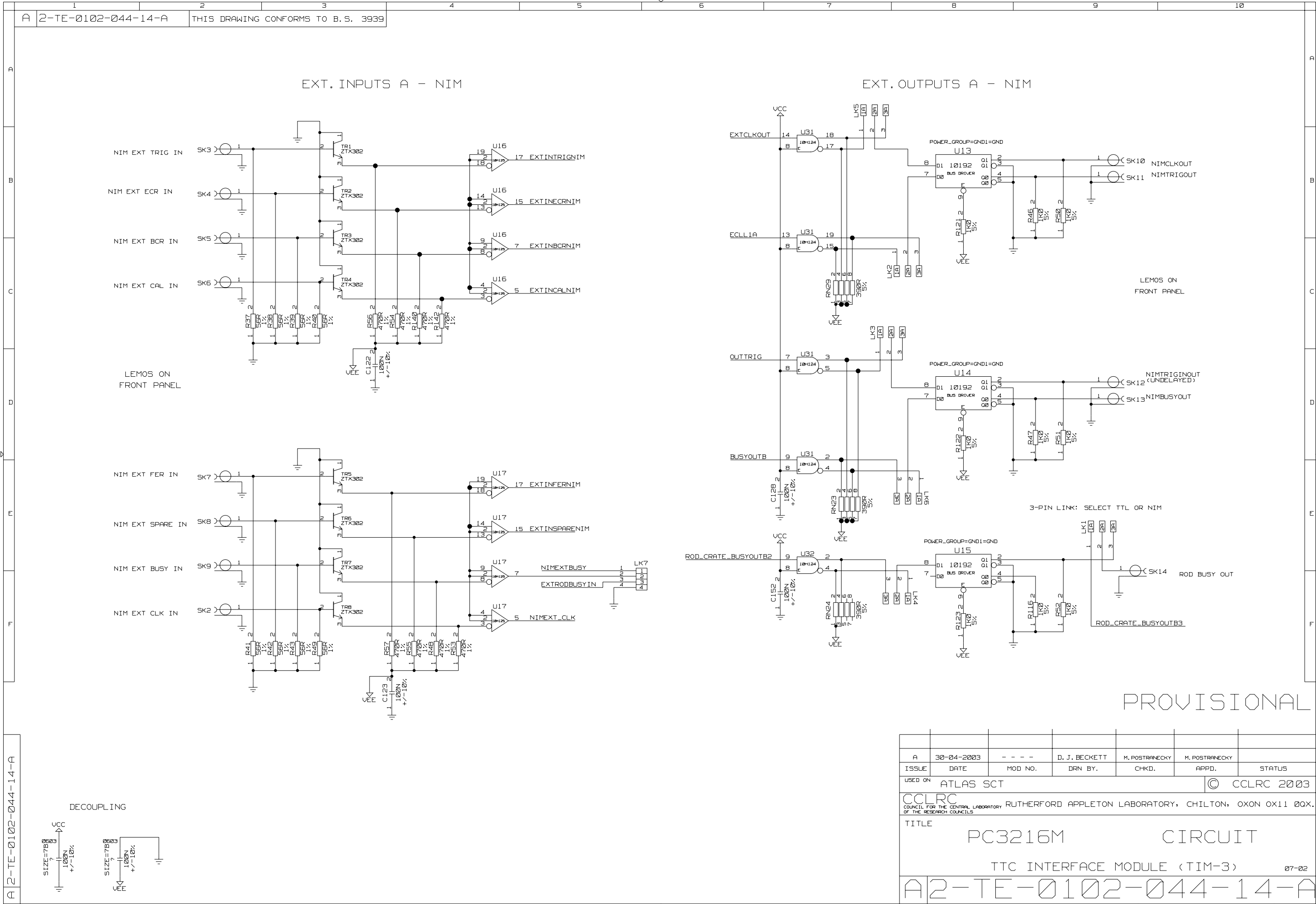


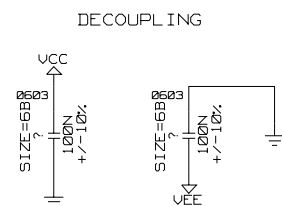
A	30-04-2003	- - - -	D. J. BECKETT	M. POSTRANECKY	M. POSTRANECKY		
ISSUE	DATE	MOD NO.	DRN BY.	CHKD.	APPD.		STATUS
USED ON ATLAS SCT						© CCLRC 2003	
CCLRC COUNCIL FOR THE CENTRAL LABORATORY OF THE RESEARCH COUNCILS RUTHERFORD APPLETON LABORATORY, CHILTON, OXON OX11 0QX.							
TITLE							
PC3216M				CIRCUIT			
TTC INTERFACE MODULE (TIM-3)						07-02	
A2-TE-0102-044-12-A							

PROVISIONAL

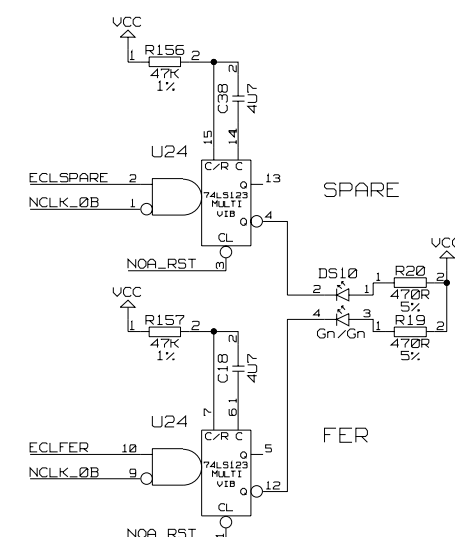
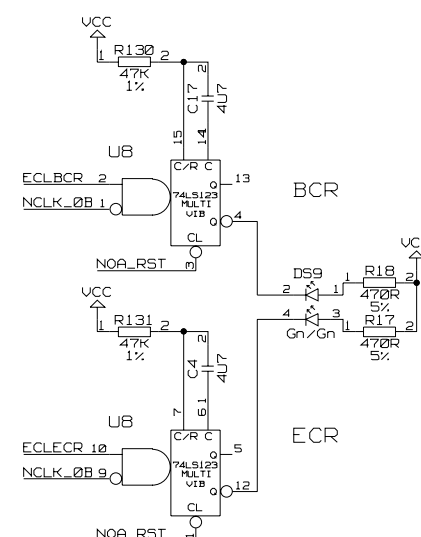
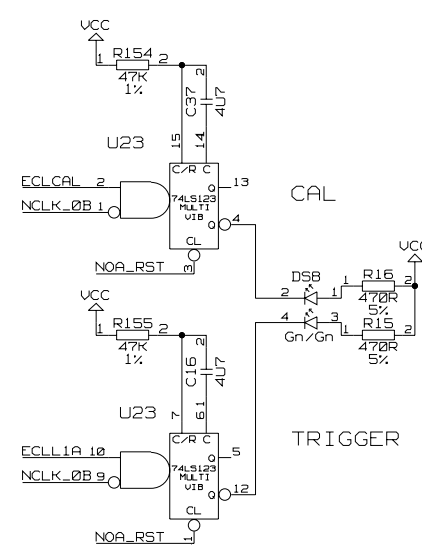
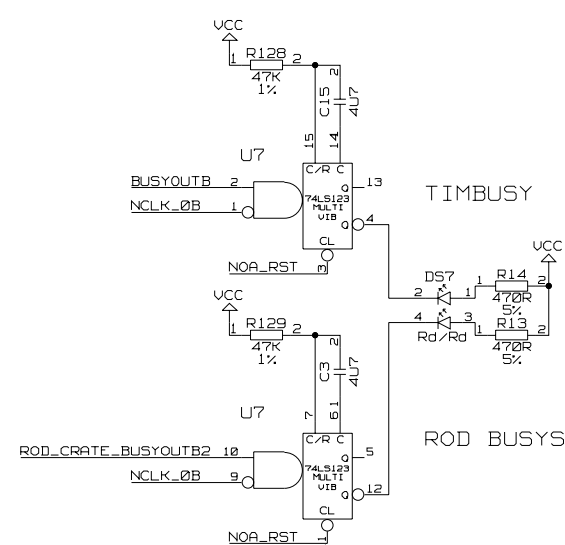
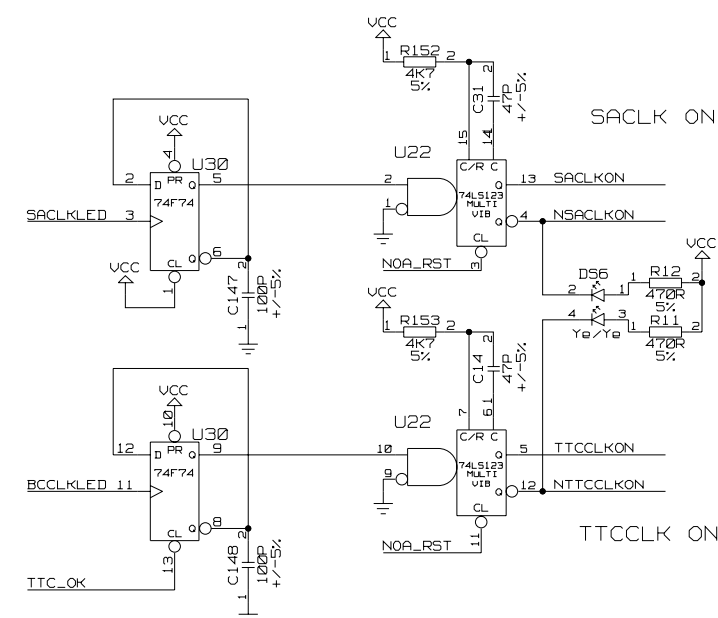
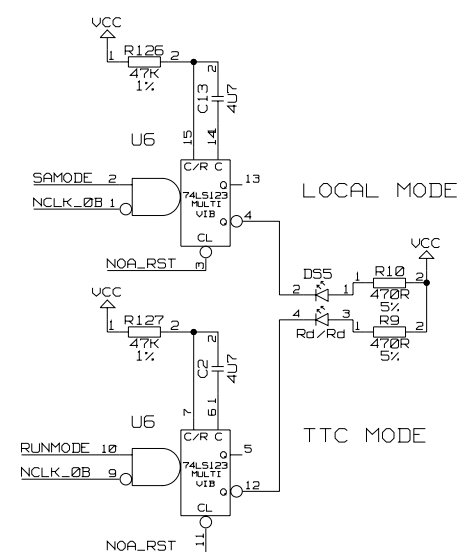
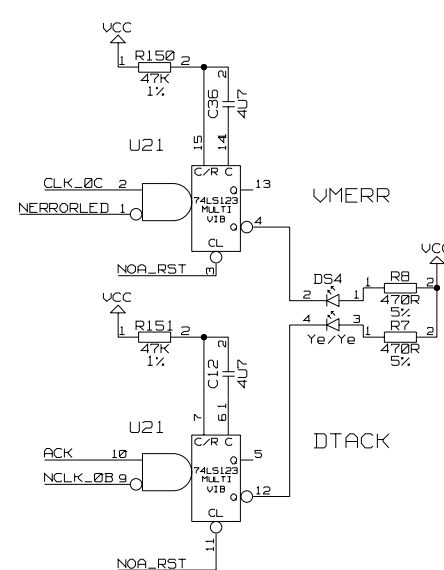
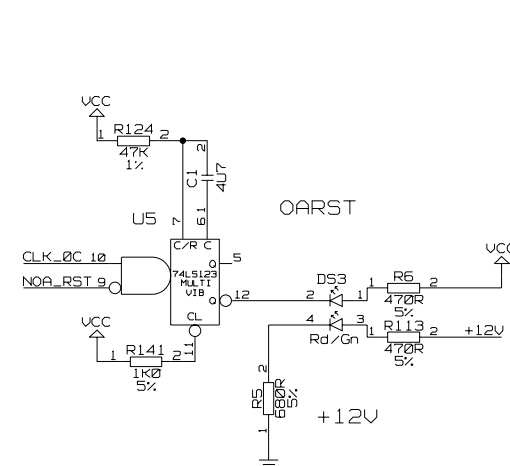


A	30-04-2003	- - - -	D. J. BECKETT	M. POSTRAINECKY	M. POSTRAINECKY	
ISSUE	DATE	MOD NO.	DRN BY.	CHKD.	APPD.	STATUS
USED ON ATLAS SCT					© CCLRC 2003	
CCLRC RUTHERFORD APPLETON LABORATORY, CHILTON, OXON OX11 0QX. COUNCIL FOR THE CENTRAL LABORATORY OF THE RESEARCH COUNCILS						
TITLE PC3216M CIRCUIT TTC INTERFACE MODULE (TIM-3) 07-02						
A2-TE-0102-044-13-A						





A	30-04-2003	- - - -	D. J. BECKETT	M. POSTRANECKY	M. POSTRANECKY	
ISSUE	DATE	MOD NO.	DRN BY.	CHKD.	APPD.	STATUS
USED ON ATLAS SCT					© CCLRC 2003	
CCLRC RUTHERFORD APPLETON LABORATORY, CHILTON, OXON OX11 0QX. COUNCIL FOR THE CENTRAL LABORATORY OF THE RESEARCH COUNCILS						
TITLE PC3216M CIRCUIT TTC INTERFACE MODULE (TIM-3) 07-02						
A2-TE-0102-044-15-A						



PROVISIONAL

SIZE=9B03
100N
+/-10%
VCC

A	30-04-2003	- - - -	D. J. BECKETT	M. POSTRANECKY	M. POSTRANECKY		
ISSUE	DATE	MOD NO.	DRN BY.	CHKD.	APPD.		STATUS
USED ON ATLAS SCT						© CCLRC 2003	
CCLRC RUTHERFORD APPLETON LABORATORY, CHILTON, OXON OX11 0QX COUNCIL FOR THE CENTRAL LABORATORY OF THE RESEARCH COUNCILS							
TITLE							
PC3216M				CIRCUIT			
TTC INTERFACE MODULE (TIM-3)							
07-02							
A2-TE-0102-044-16-A							