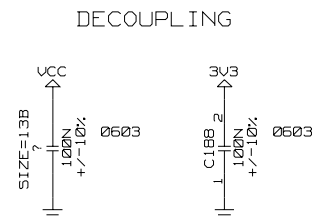
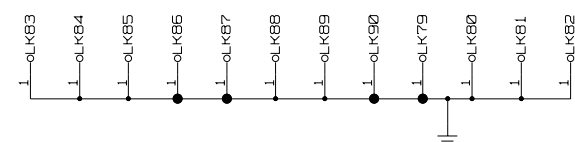


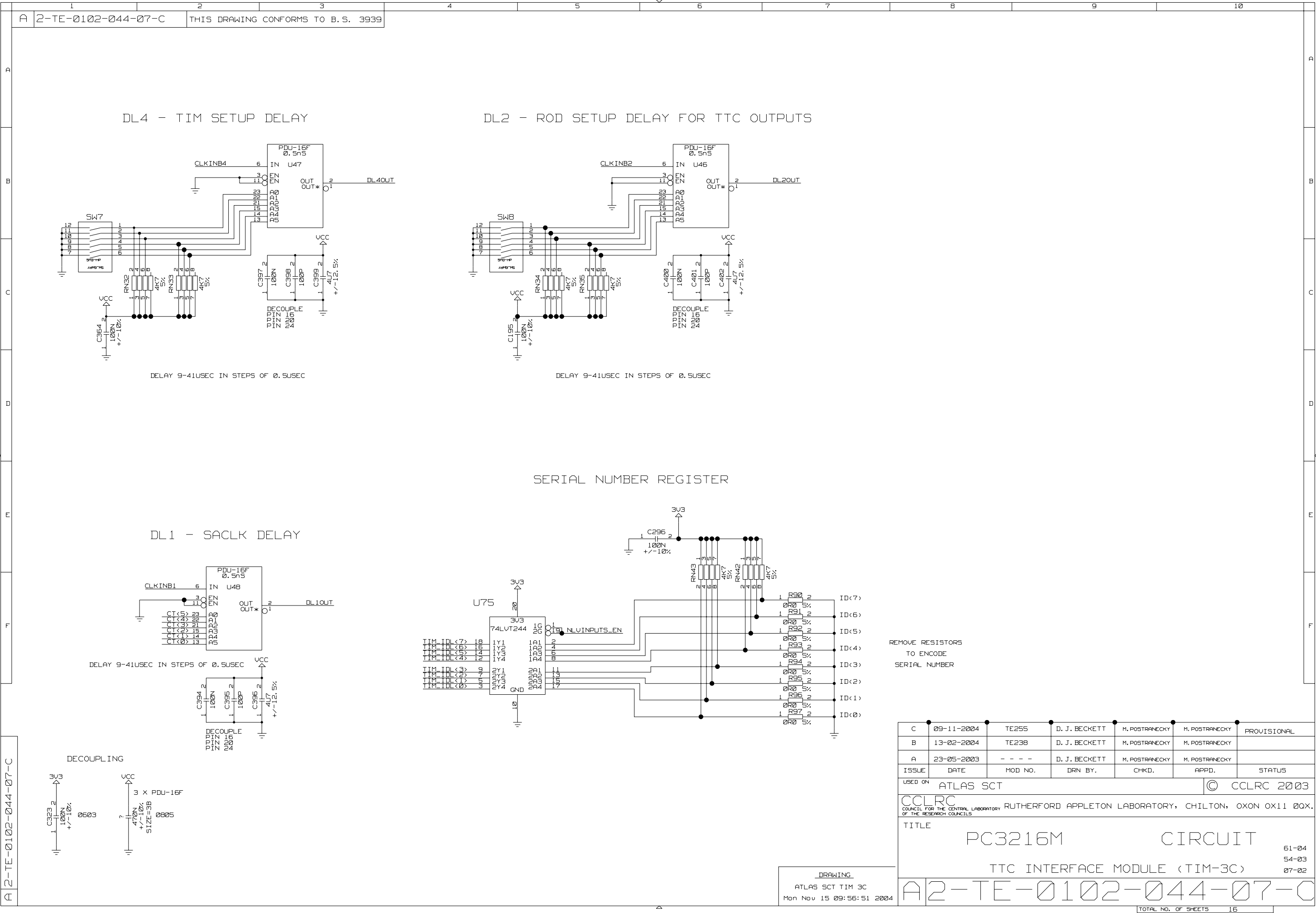
VME DELAYS AND BASE SELECT



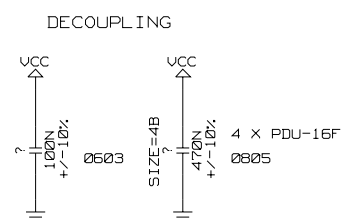
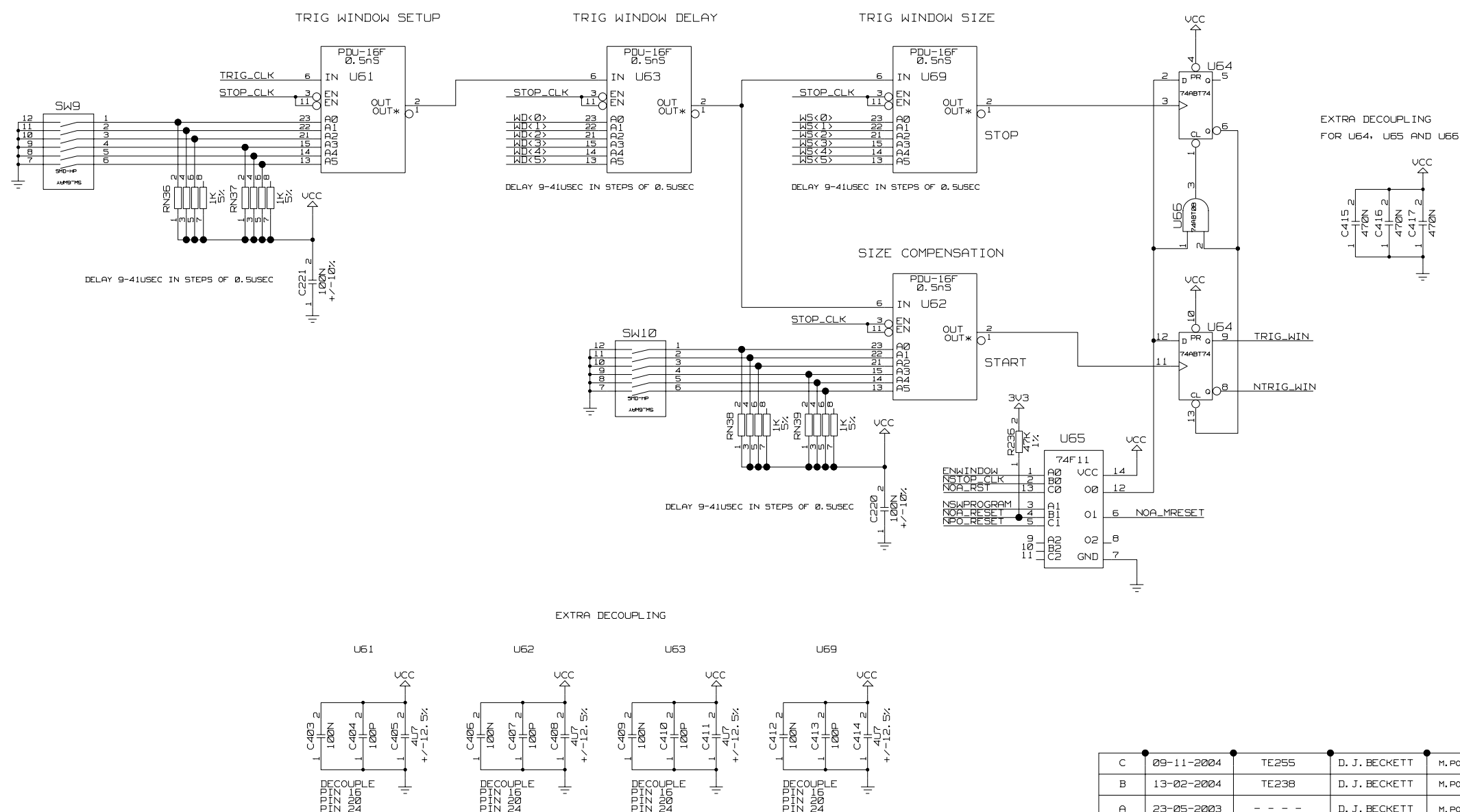
C	09-11-2004	TE255	D. J. BECKETT	M. POSTRANECKY	M. POSTRANECKY	PROVISIONAL
B	13-02-2004	TE238	D. J. BECKETT	M. POSTRANECKY	M. POSTRANECKY	
A	23-05-2003	- - - -	D. J. BECKETT	M. POSTRANECKY	M. POSTRANECKY	
ISSUE	DATE	MOD NO.	DRN BY.	CHKD.	APPD.	STATUS
USED ON					ATLAS SCT	
					© CCLRC 2003	
CCLRC COUNCIL FOR THE CENTRAL LABORATORY RUTHERFORD APPLETON LABORATORY, CHILTON, OXON OX11 0QX OF THE RESEARCH COUNCILS						
TITLE						
PC3216M						
CIRCUIT						
TTC INTERFACE MODULE (TIM-3C)						
A2-TE-0102-044-05-0						



DRAWING
ATLAS SCT TIM 3C
Mon Nov 15 09:56:49 2004



TRIGGER WINDOW - VERS B

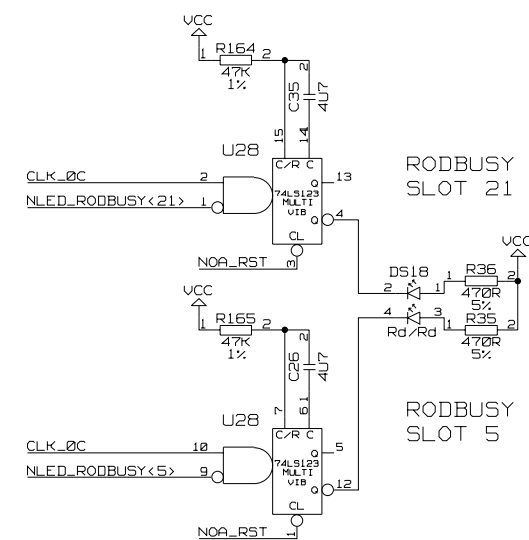
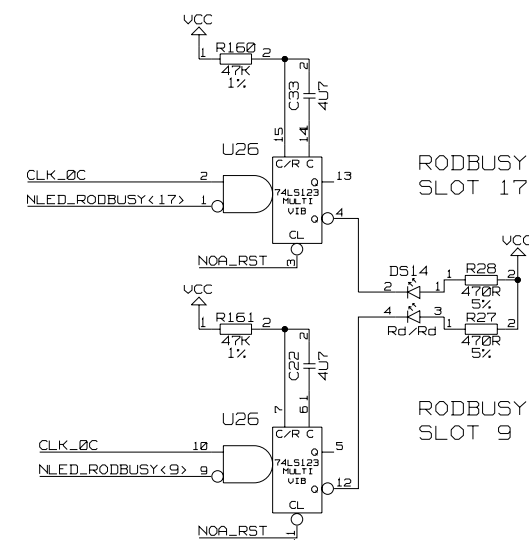


C	09-11-2004	TE255	D. J. BECKETT	M. POSTRANECKY	M. POSTRANECKY	PROVISIONAL
B	13-02-2004	TE238	D. J. BECKETT	M. POSTRANECKY	M. POSTRANECKY	
A	23-05-2003	- - - -	D. J. BECKETT	M. POSTRANECKY	M. POSTRANECKY	
ISSUE	DATE	MOD NO.	DRN BY.	CHKD.	APPD.	STATUS
USED ON ATLAS SCT						© CCLRC 2003

CCLRC COUNCIL FOR THE CENTRAL LABORATORY OF THE RESEARCH COUNCILS RUTHERFORD APPLETON LABORATORY, CHILTON, OXON OX11 0QX

TITLE	PC3216M	CIRCUIT	61-04
	TTC INTERFACE MODULE (TIM-3C)		54-03
			07-00

A2-TE-0102-044-08-C

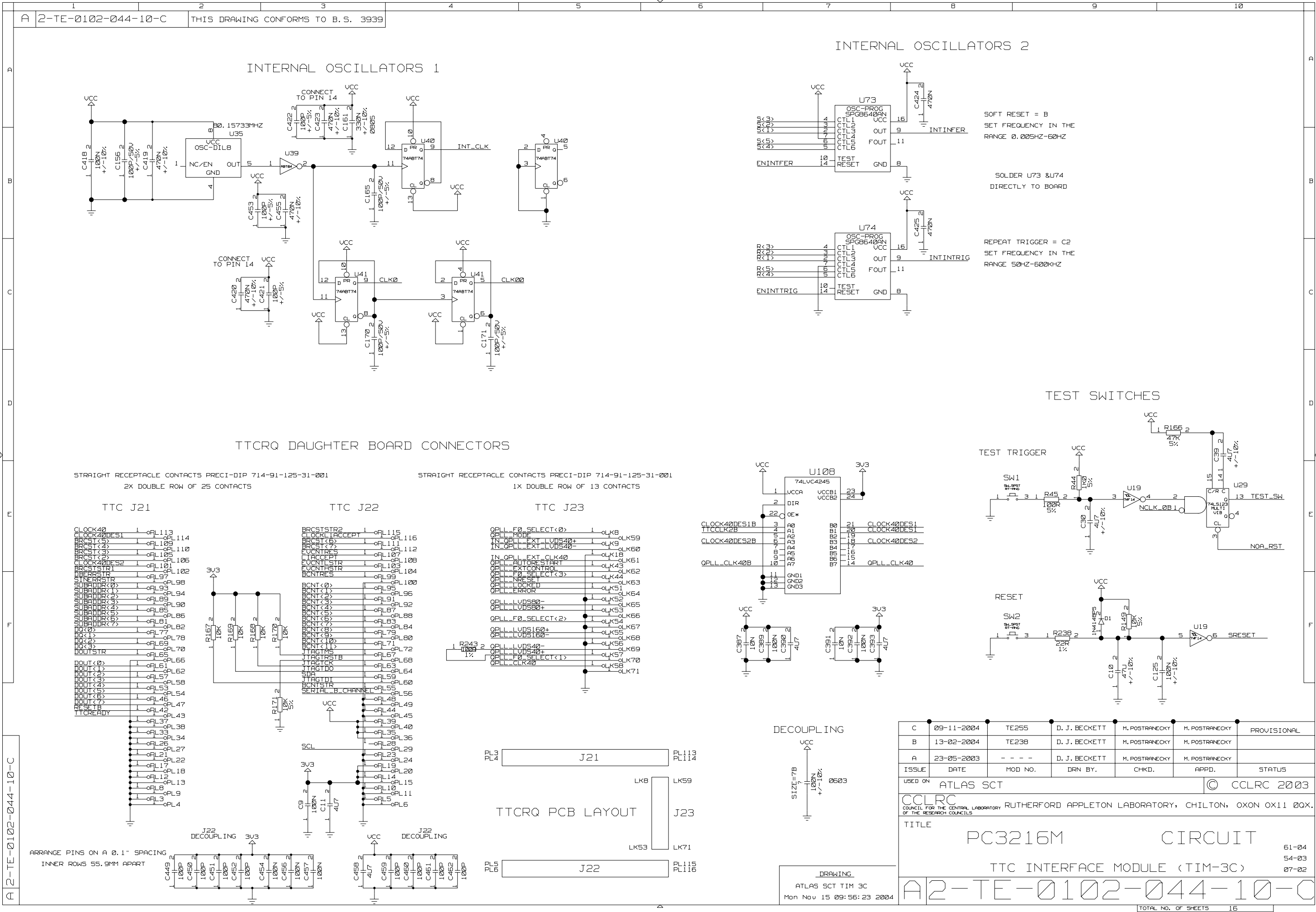


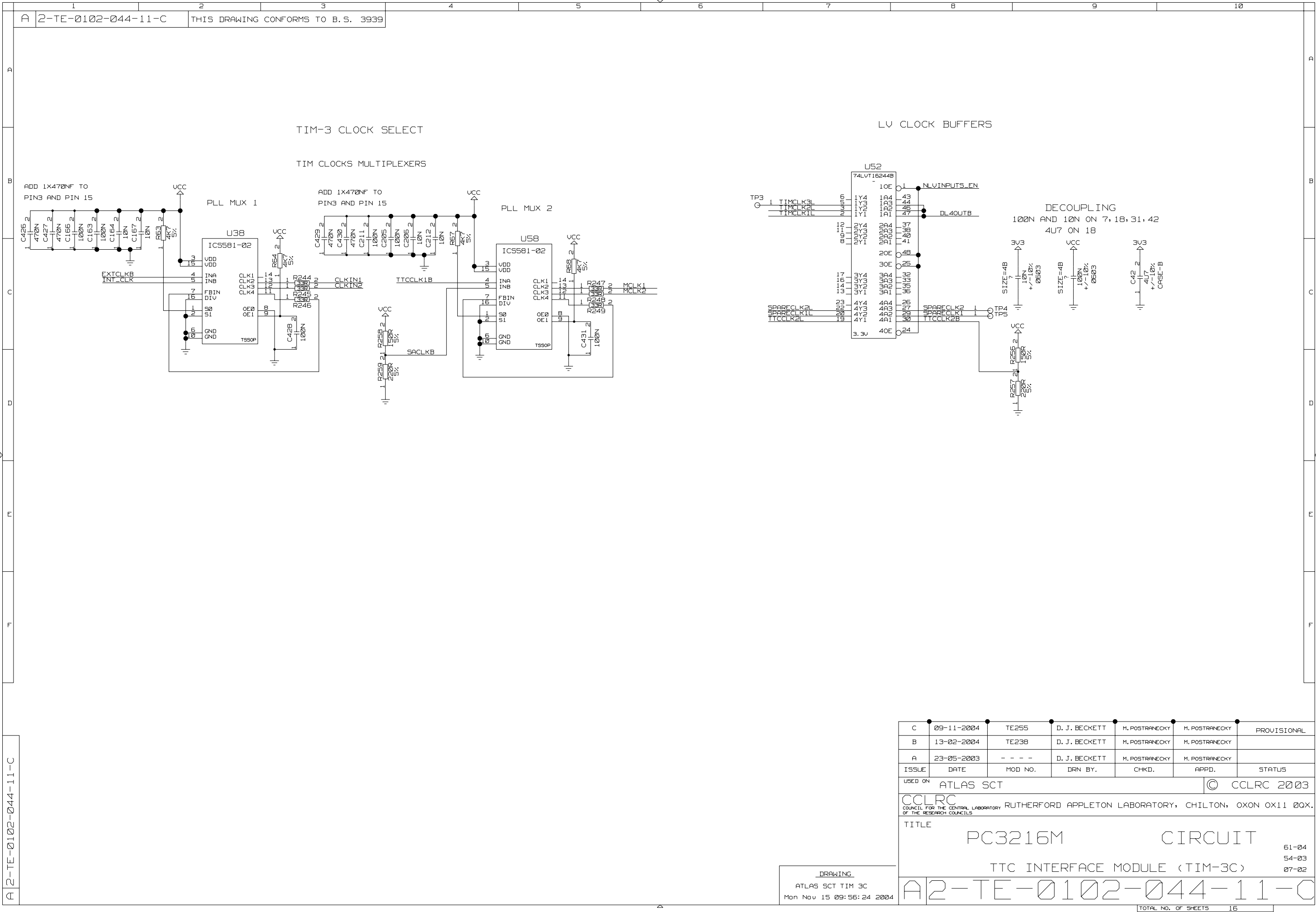
SIZE=8B
?
100N
+/-10%
SCC

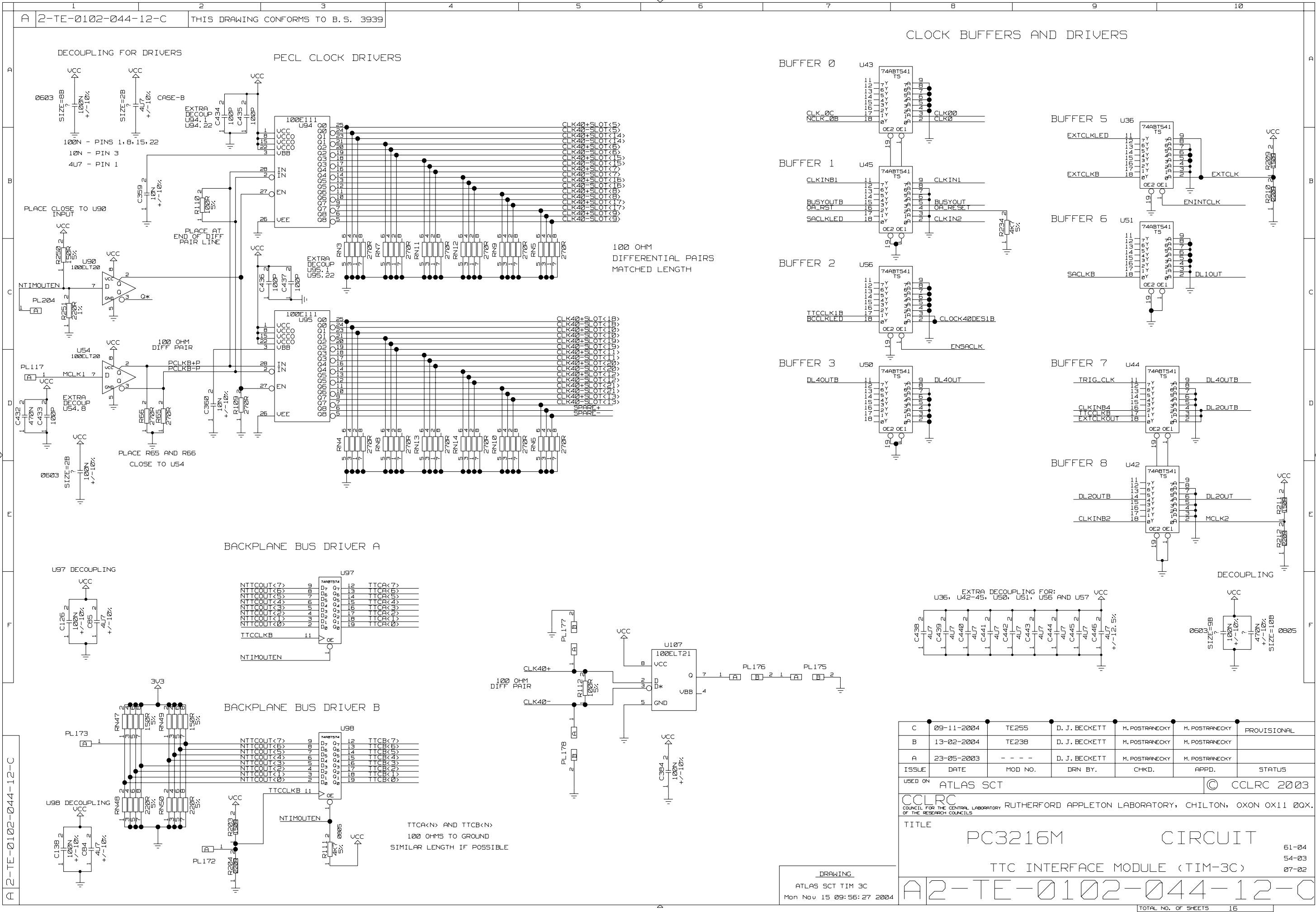
Mon Nov 15 09:56:20 2004

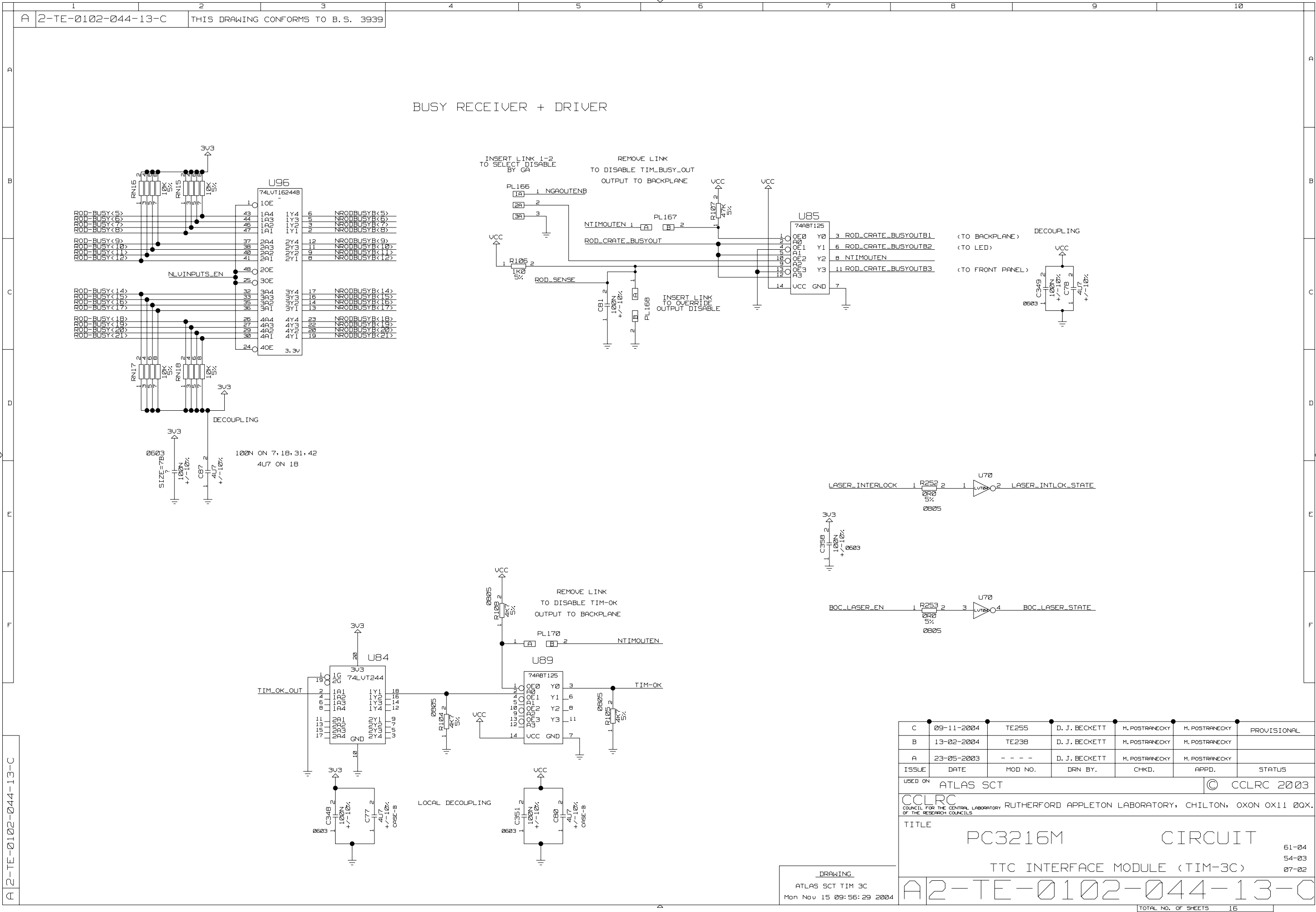
TITLE		
PC3216M	CIRCUIT	61-0
TTC INTERFACE MODULE (TIM-3C)		54-0
		07-0

A2-TE-0102-044-09-C









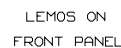
C	09-11-2004	TE255	D. J. BECKETT	M. POSTRANECKY	M. POSTRANECKY	PROVISIONAL
B	13-02-2004	TE238	D. J. BECKETT	M. POSTRANECKY	M. POSTRANECKY	
A	23-05-2003	- - - -	D. J. BECKETT	M. POSTRANECKY	M. POSTRANECKY	
ISSUE	DATE	MOD NO.	DRN BY.	CHKD.	APPD.	STATUS

USED ON ATLAS SCT © CCLRC 2003

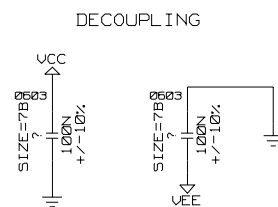
CCLRC COUNCIL FOR THE CENTRAL LABORATORY RUTHERFORD APPLETON LABORATORY, CHILTON, OXON OX11 0QX. OF THE RESEARCH COUNCILS

TITLE PC3216M CIRCUIT 61-04 54-03 07-02

A2-TE-0102-044-13-C



3-PIN LINK: SELECT TTL OR NIM

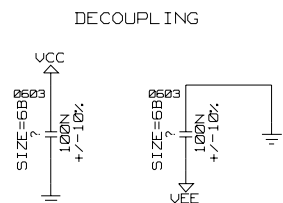


SELECT ONBOARD
DESTINATION OF
EXTBUSY INPUT

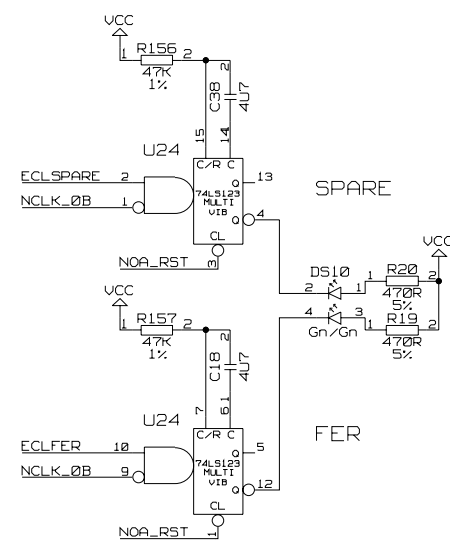
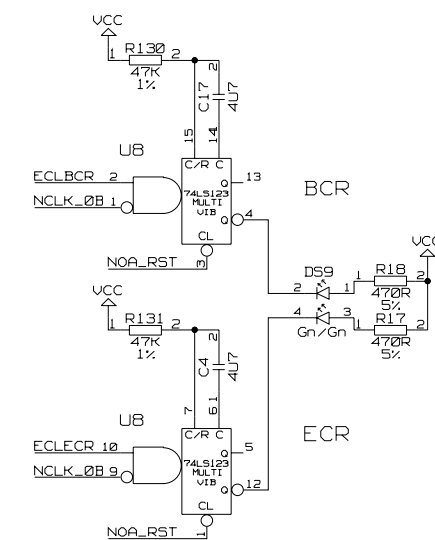
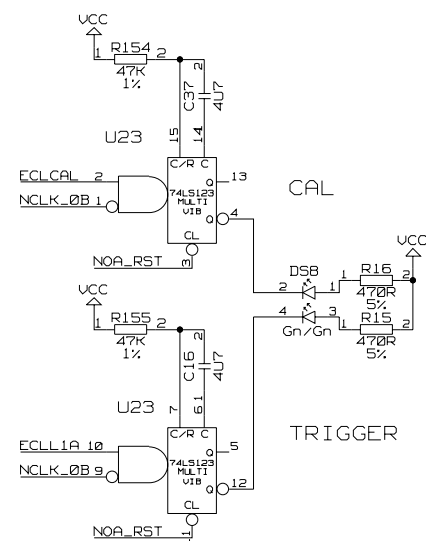
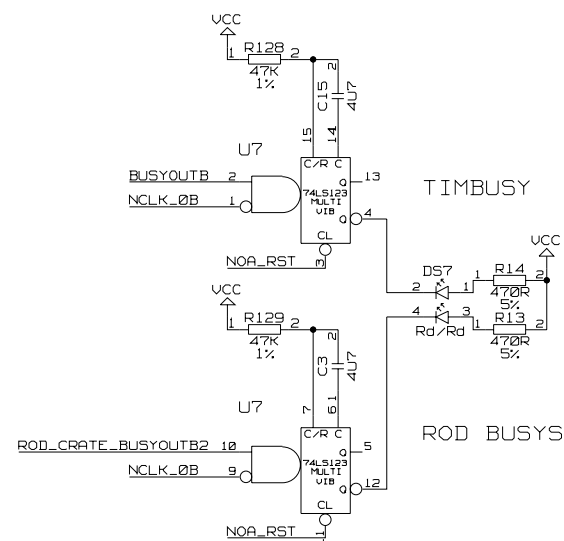
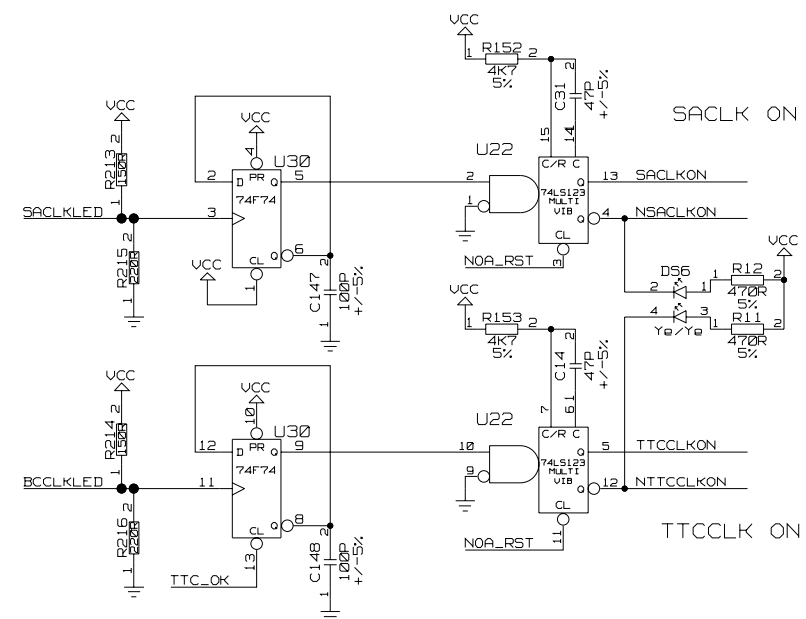
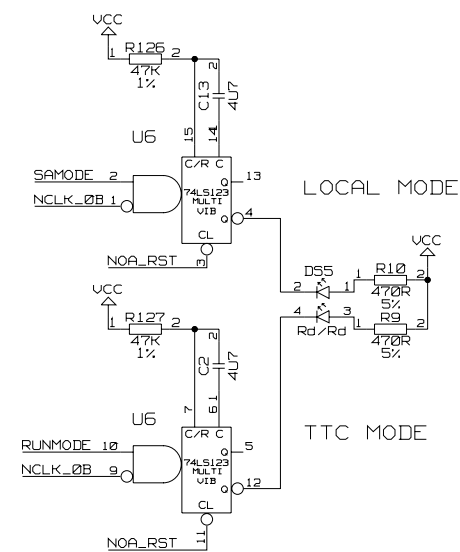
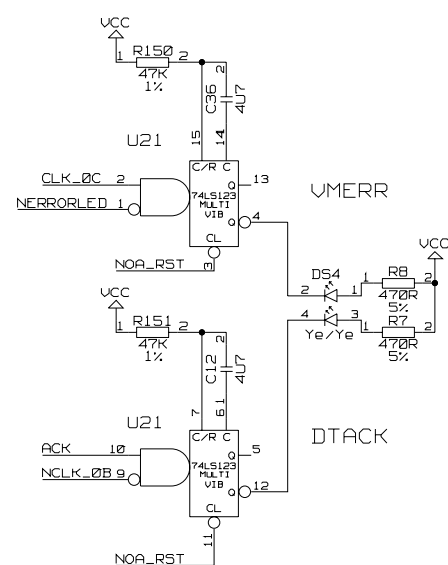
CCLRC
COUNCIL FOR THE CENTRAL LABORATORY RUTHERFORD APPLETON LABORATORY, CHILTON, OXON OX11 0QX

OF THE RESEARCH COUNCILS		
TITLE		
PC3216M	CIRCUIT	61-04
		54-03
TTC INTERFACE MODULE (TIM-3C)		07-02

A2-TE-0102-044-14-C



C	09-11-2004	TE255	D. J. BECKETT	M. POSTRANECKY	M. POSTRANECKY	PROVISIONAL
B	13-02-2004	TE238	D. J. BECKETT	M. POSTRANECKY	M. POSTRANECKY	
A	23-05-2003	- - - -	D. J. BECKETT	M. POSTRANECKY	M. POSTRANECKY	
ISSUE	DATE	MOD NO.	DRN BY.	CHKD.	APPD.	STATUS
USED ON					ATLAS SCT	
					© CCLRC 2003	
CCLRC COUNCIL FOR THE CENTRAL LABORATORY RUTHERFORD APPLETON LABORATORY, CHILTON, OXON OX11 0QX. OF THE RESEARCH COUNCILS						
TITLE						
PC3216M CIRCUIT						
TTC INTERFACE MODULE (TIM-3C)						
61-04 54-03 07-02						
A2-TE-0102-044-15-C						



SIZE=9B80
100N
+/-10%
VCC

ATLAS SCT TIM 3C
Mon Nov 15 09:56:34 2004

TITLE	PC3216M	CIRCUIT	61-04
	TTC INTERFACE MODULE (TIM-3C)		54-03
			07-00

TOTAL NO. OF SHEETS	18
---------------------	----