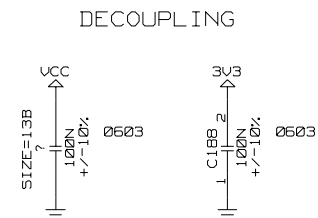
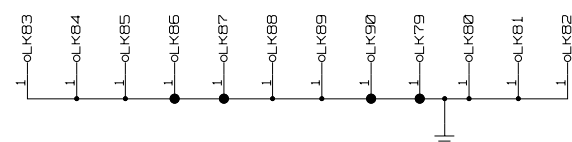


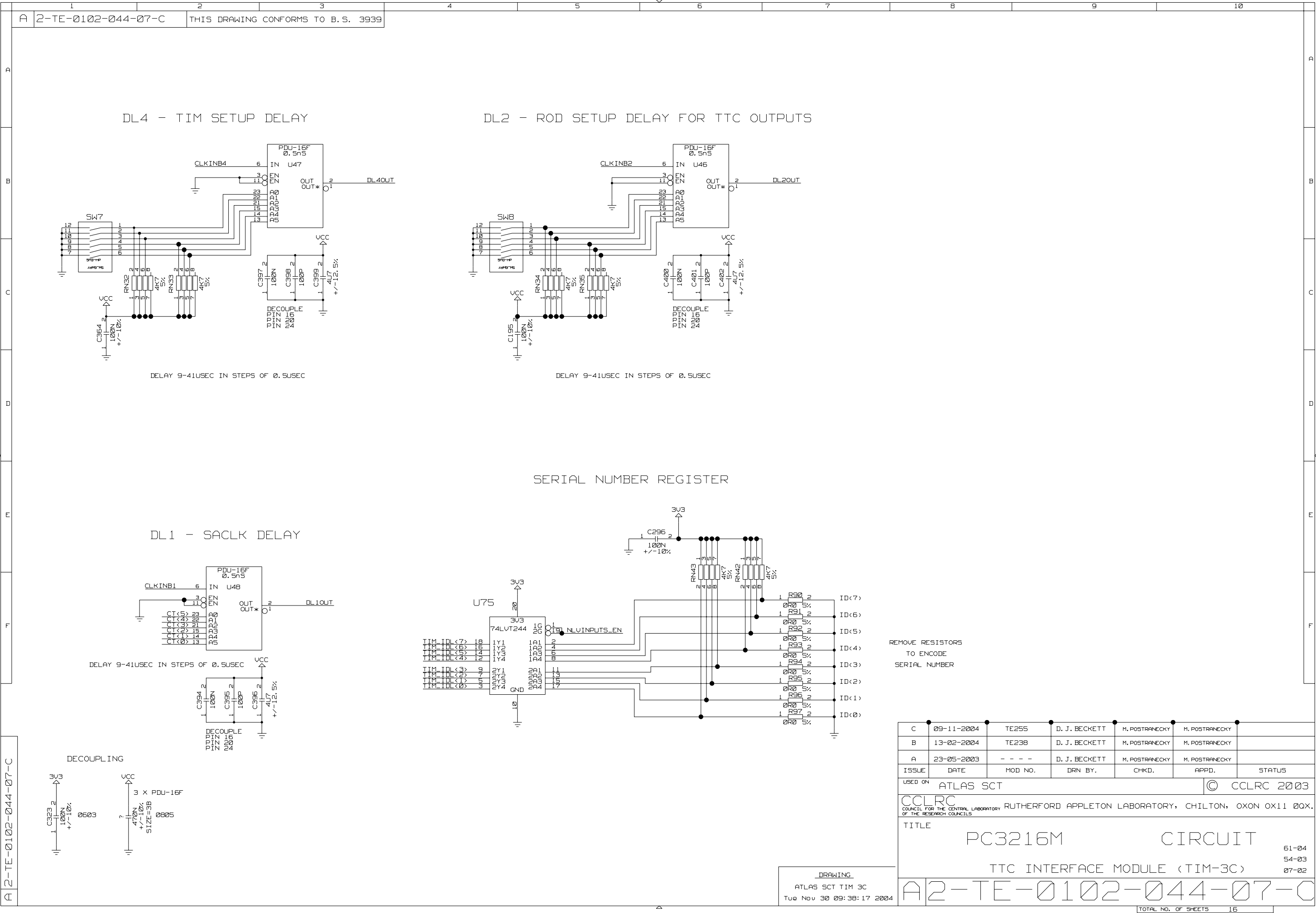
VME DELAYS AND BASE SELECT



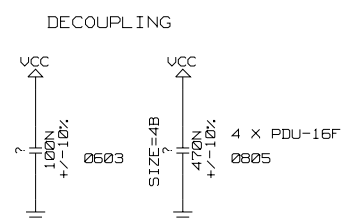
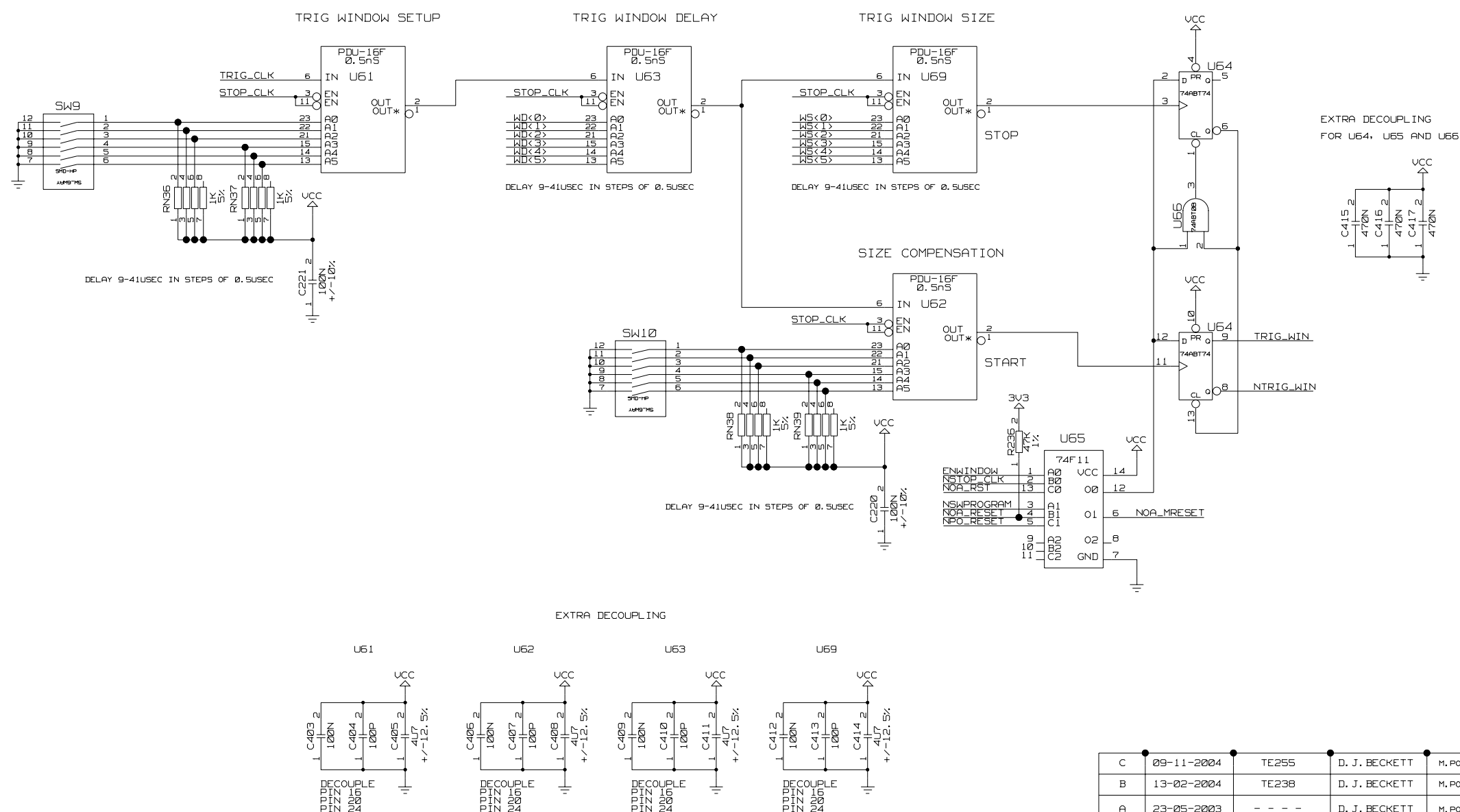
C	09-11-2004	TE255	D. J. BECKETT	M. POSTRANECKY	M. POSTRANECKY	
B	13-02-2004	TE238	D. J. BECKETT	M. POSTRANECKY	M. POSTRANECKY	
A	23-05-2003	- - - -	D. J. BECKETT	M. POSTRANECKY	M. POSTRANECKY	
ISSUE	DATE	MOD NO.	DRN BY.	CHKD.	APPD.	STATUS
USED ON ATLAS SCT					© CCLRC 2003	
CCLRC COUNCIL FOR THE CENTRAL LABORATORY RUTHERFORD APPLETON LABORATORY, CHILTON, OXON OX11 0QX. OF THE RESEARCH COUNCILS						
TITLE						
PC3216M TTC INTERFACE MODULE (TIM-3C) CIRCUIT						
61-04 54-03 07-02						
A2-TE-0102-044-05-C						



A	2-TE-0102-044-06-C
---	--------------------



TRIGGER WINDOW - VERS B

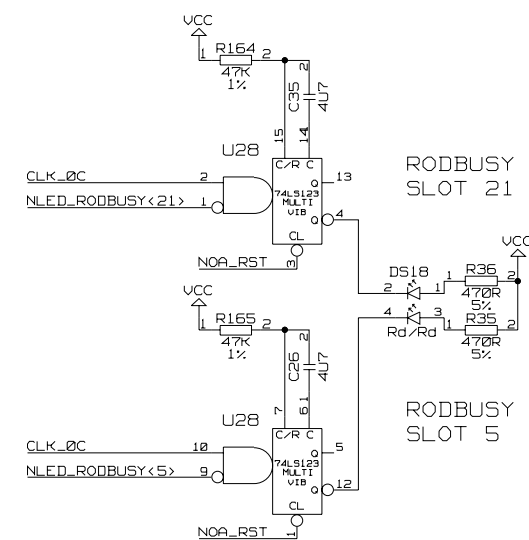
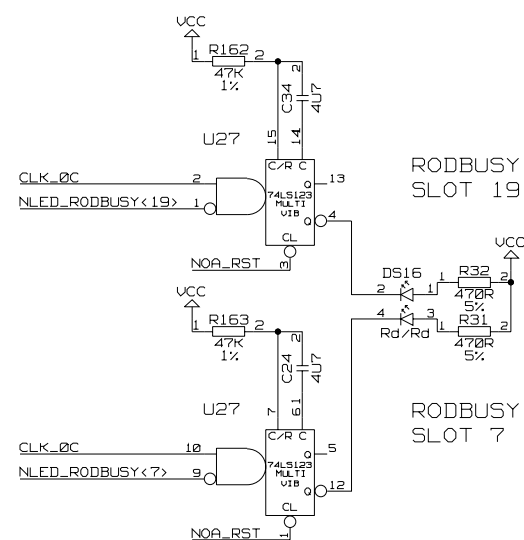
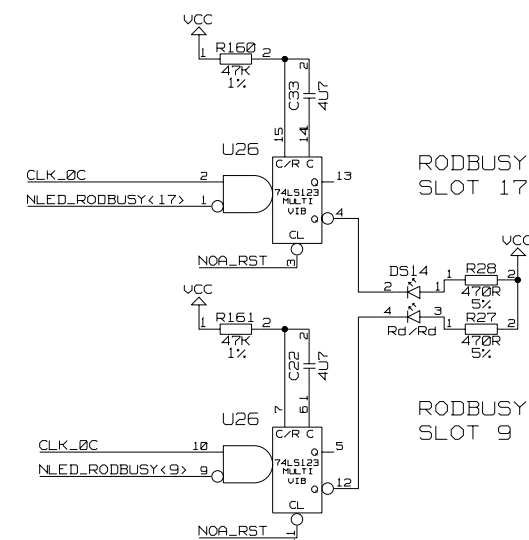
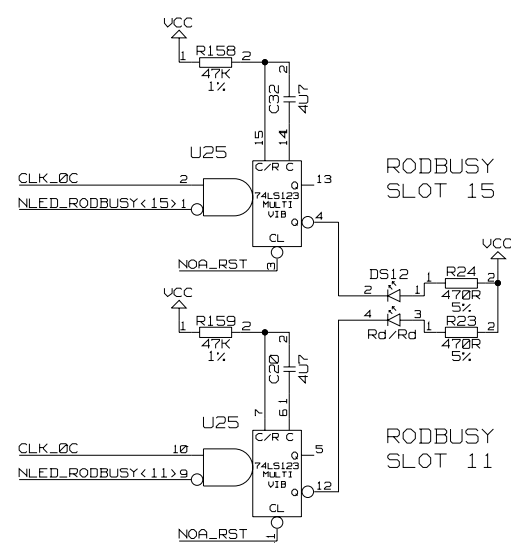


C	09-11-2004	TE255	D. J. BECKETT	M. POSTRANECKY	M. POSTRANECKY	
B	13-02-2004	TE238	D. J. BECKETT	M. POSTRANECKY	M. POSTRANECKY	
A	23-05-2003	- - -	D. J. BECKETT	M. POSTRANECKY	M. POSTRANECKY	
ISSUE	DATE	MOD NO.	DRN BY.	CHKD.	APPD.	STATUS
USED ON ATLAS SCT					© CCLRC 2003	

CCLRC COUNCIL FOR THE CENTRAL LABORATORY OF THE RESEARCH COUNCILS RUTHERFORD APPLETON LABORATORY, CHILTON, OXON OX11 0QX

TITLE	PC3216M	CIRCUIT	61-04
	TTC INTERFACE MODULE (TIM-3C)		54-03
			07-02

A2-TE-0102-044-08-C



SIZE=8B
?
100N
+/-10%
SCC

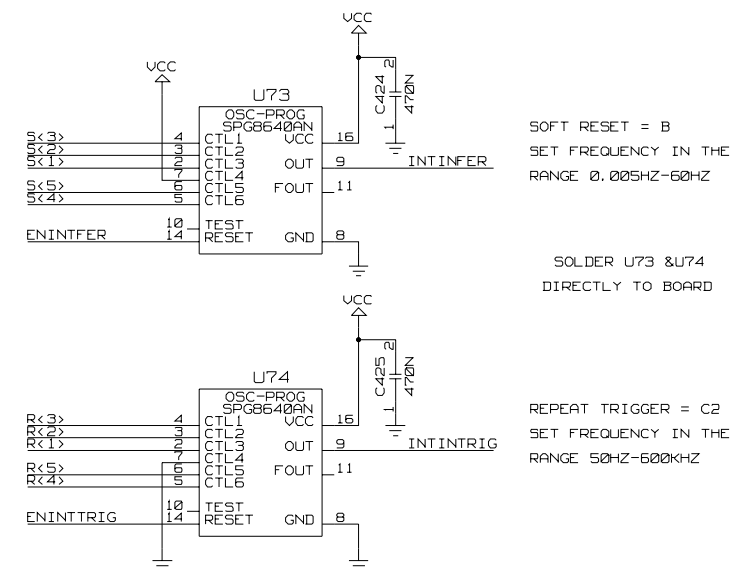
USED ON	ATLAS SCT	© CCLRC 2003
---------	-----------	--------------

CCLRC COUNCIL FOR THE CENTRAL LABORATORY OF THE RESEARCH COUNCILS RUTHERFORD APPLETON LABORATORY, CHILTON, OXON OX11 0QX

TITLE	PC3216M	CIRCUIT	61-04
	TTC INTERFACE MODULE (TIM-3C)		54-03
			07-02

A2-TE-0102-044-09-C

INTERNAL OSCILLATORS 2



SOFT RESET = B
SET FREQUENCY IN THE
RANGE 0.005HZ-60HZ

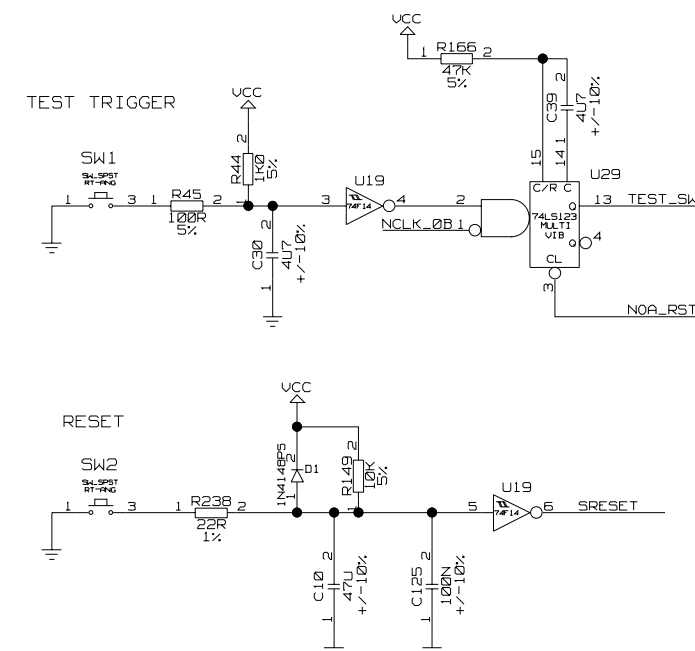
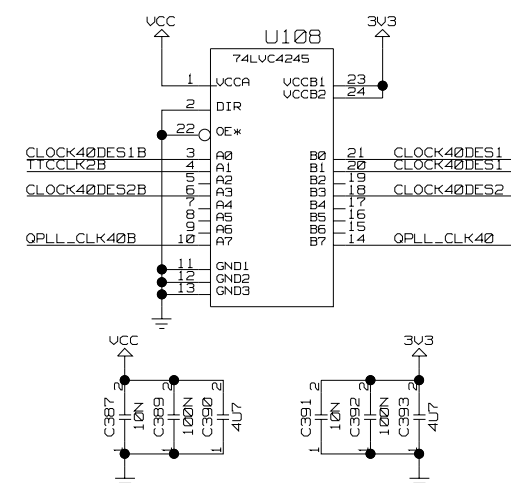
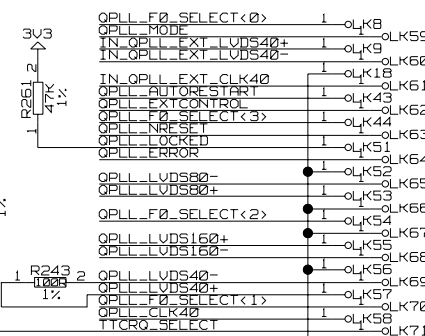
SOLDER U73 & U74
DIRECTLY TO BOARD

REPEAT TRIGGER = C2
SET FREQUENCY IN THE
RANGE 50HZ-600KHZ

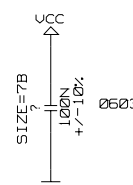
TEST SWITCHES

STRAIGHT RECEPTACLE CONTACTS PRECI-DIP 714-91-125-31-001
1X DOUBLE ROW OF 13 CONTACTS

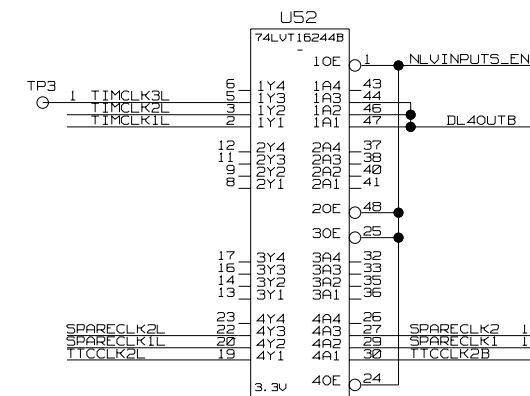
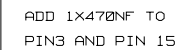
TTC J23



DECOUPLING

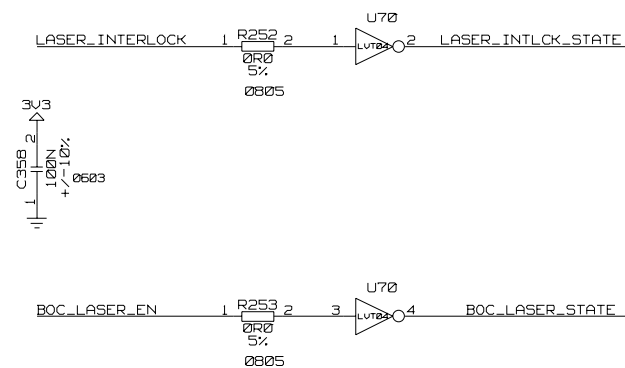
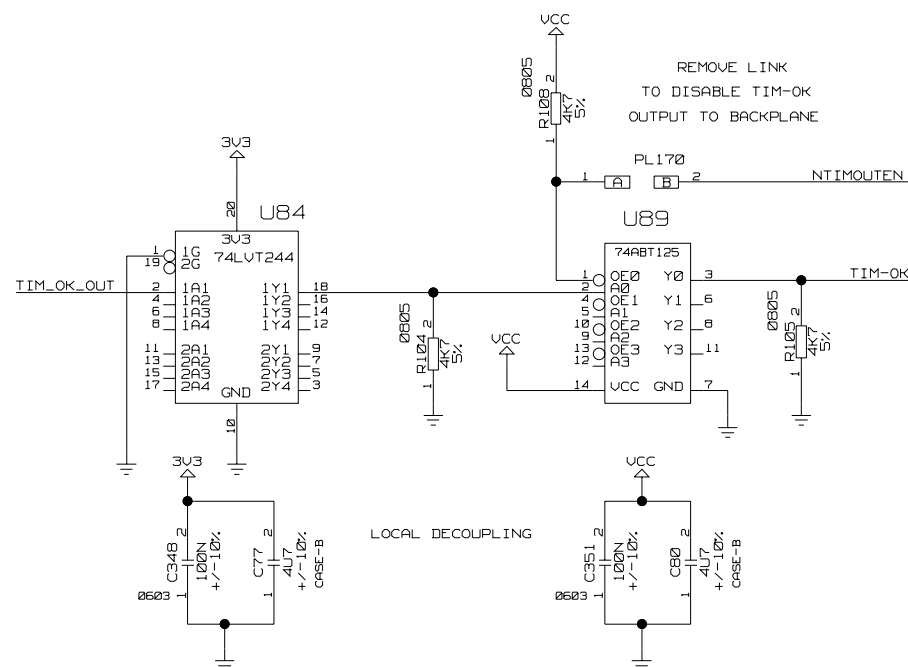


C	09-11-2004	TE255	D. J. BECKETT	M. POSTRANECKY	M. POSTRANECKY	
B	13-02-2004	TE238	D. J. BECKETT	M. POSTRANECKY	M. POSTRANECKY	
A	23-05-2003	- - - -	D. J. BECKETT	M. POSTRANECKY	M. POSTRANECKY	
ISSUE	DATE	MOD NO.	DRN BY.	CHKD.	APPD.	STATUS
USED ON					ATLAS SCT	
					© CCLRC 2003	
<p>CCLRC <small>COUNCIL FOR THE CENTRAL LABORATORY OF THE RESEARCH COUNCILS</small></p> <p>RUTHERFORD APPLETON LABORATORY, CHILTON, OXON OX11 0QX</p>						
TITLE						
PC3216M CIRCUIT						
TTC INTERFACE MODULE (TIM-3C)						
A2-TE-0102-044-10-C						

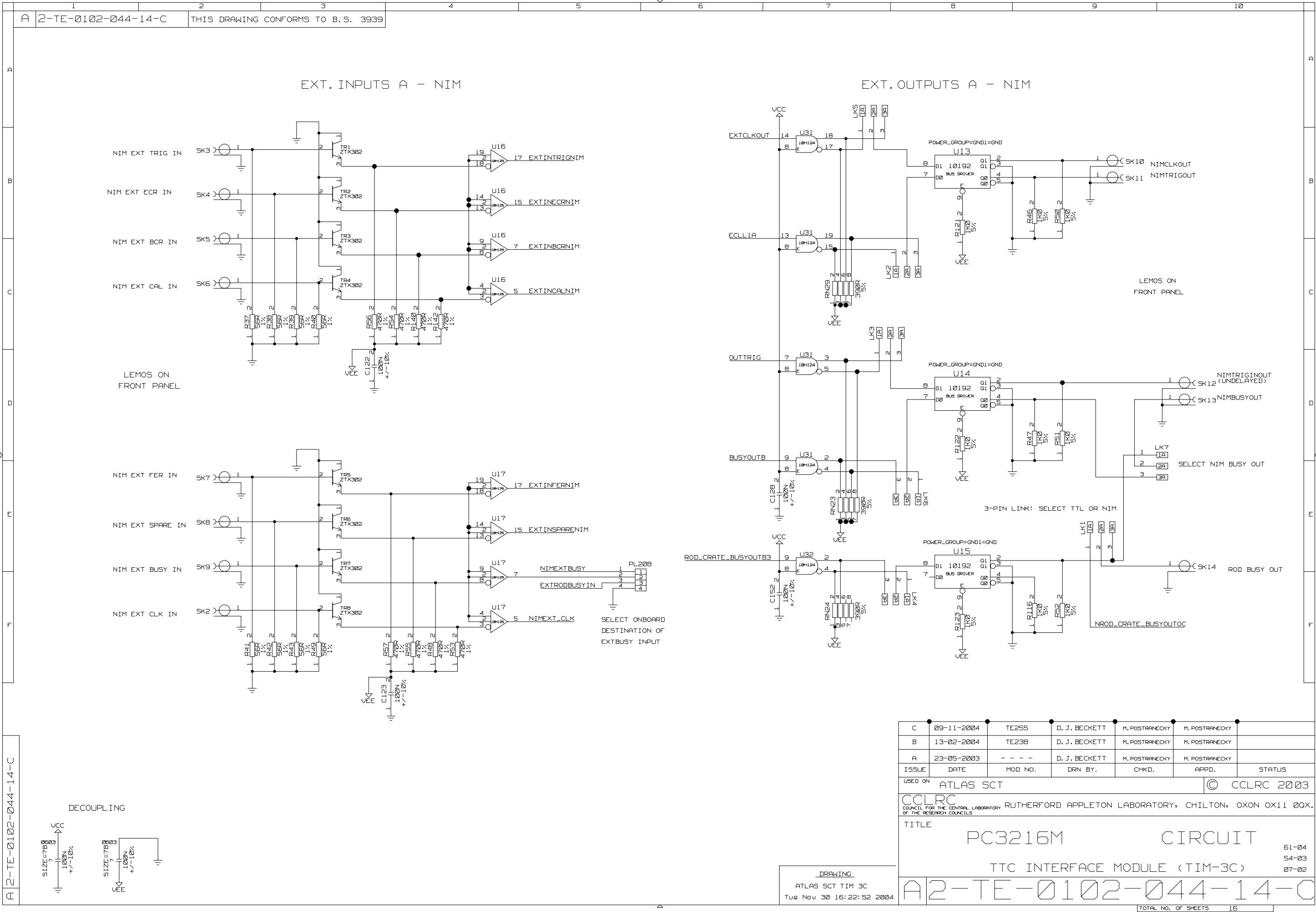


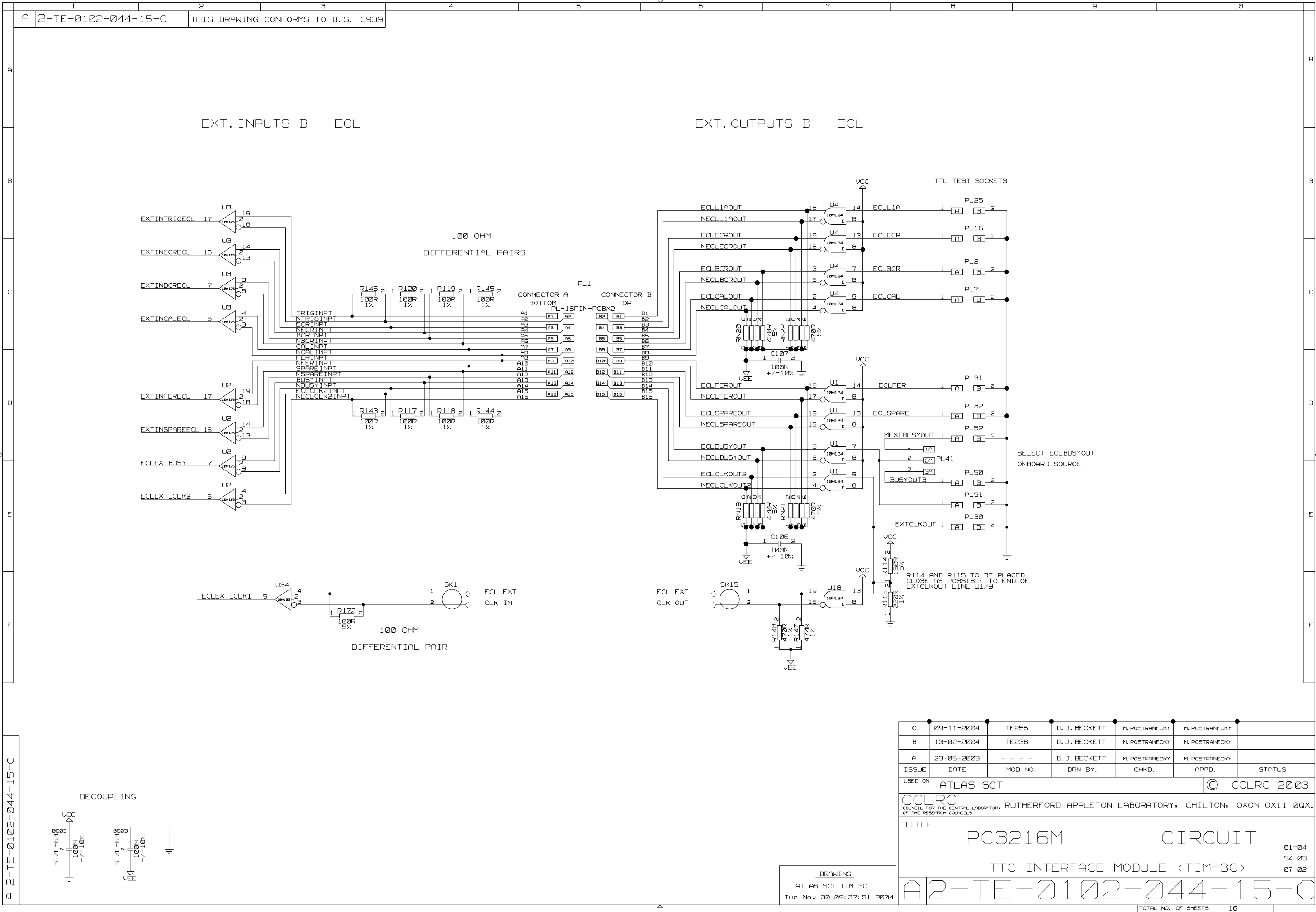
DRAWING
ATLAS SCT TIM 3C
Tue Nov 30 09:37:41 2004

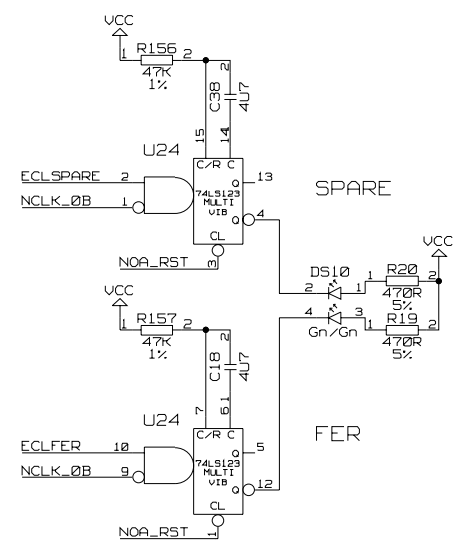
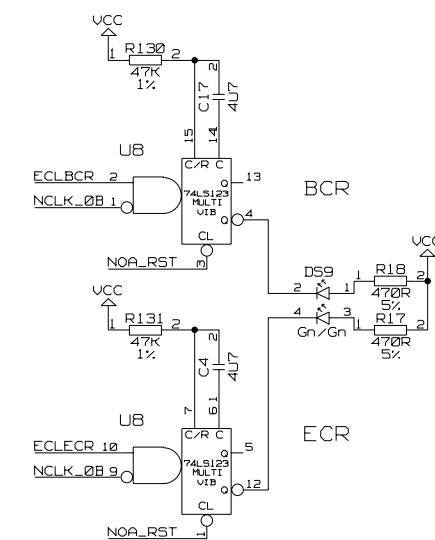
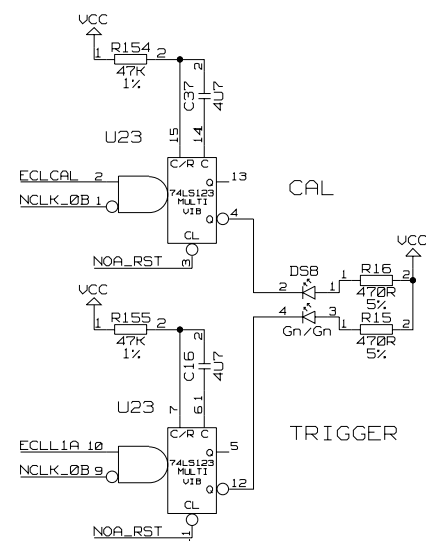
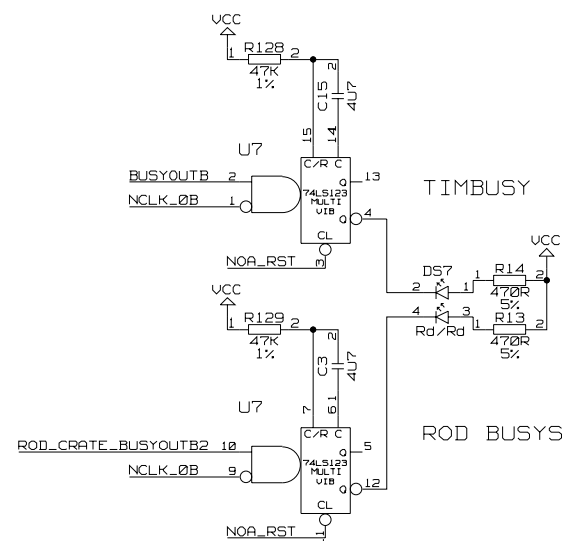
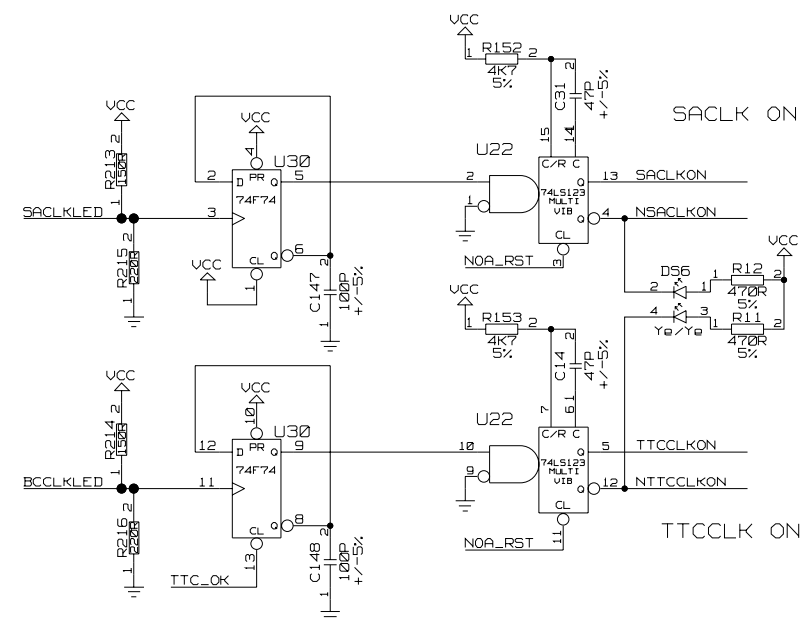
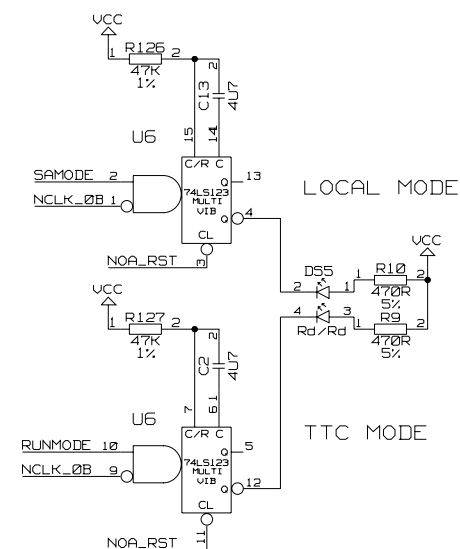
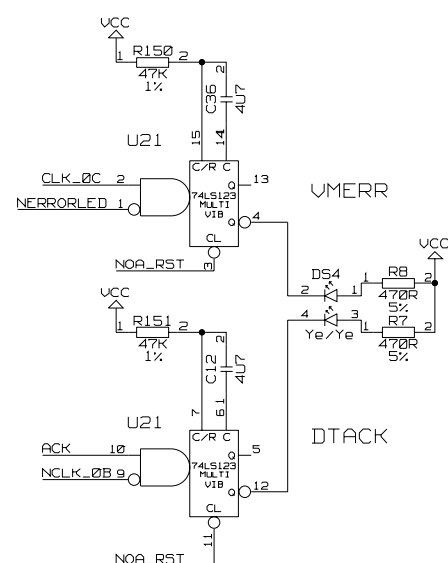
LOCAL DECOUPLING



TOTAL NO. OF SHEETS	16
---------------------	----







SIZE=9B80
100N
+/-10%
VCC

ATLAS SCT TIM 3C
Tue Nov 30 09:37:53 2004

TITLE	PC3216M	CIRCUIT	61-04
	TTC INTERFACE MODULE (TIM-3C)		54-03
			07-00

TOTAL NO. OF SHEETS	16
---------------------	----