

TTCrx Pin-out

Version 2.

06 February 2001

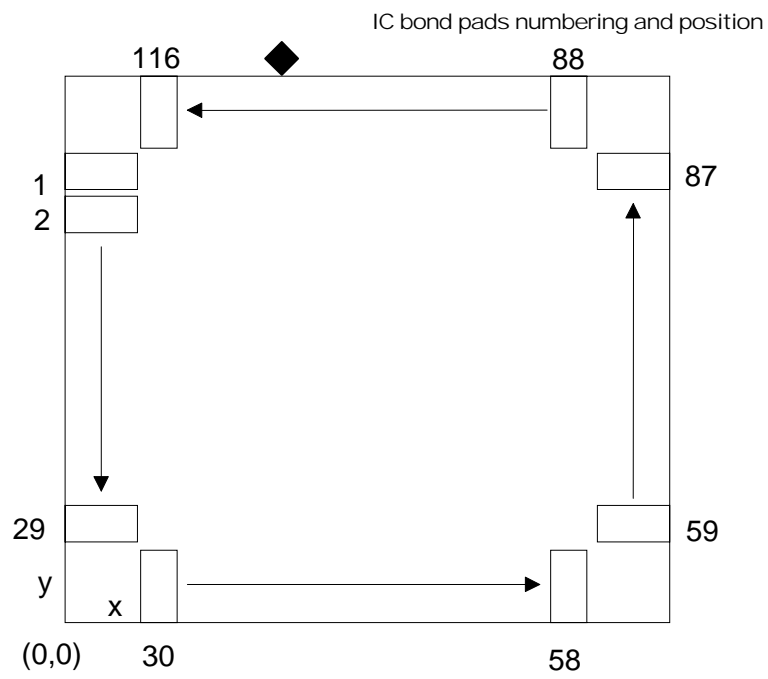


Figure 1, Bond pad counting orientation

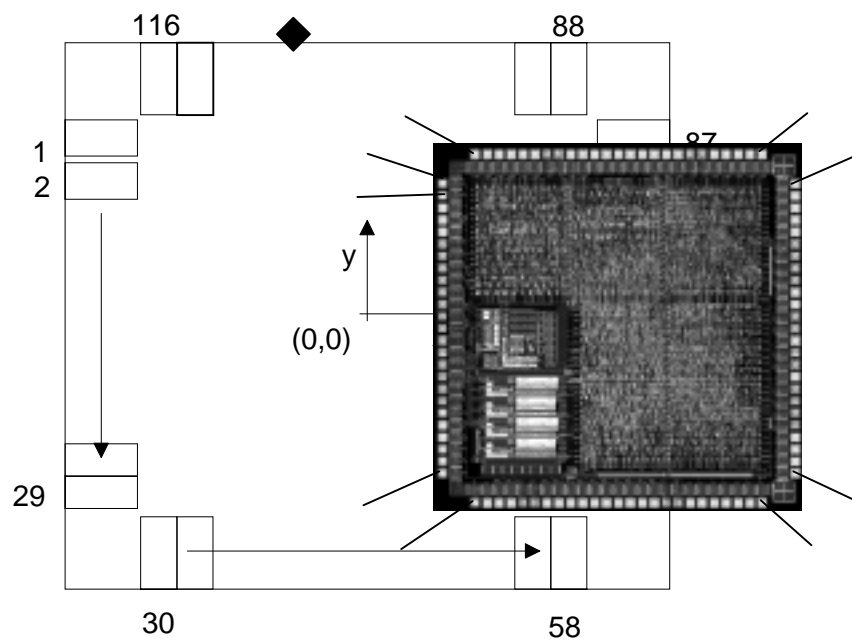


Figure 2, Die orientation

X/Y values are coordinates of the pad center. The (0/0) coordinate is in the lower left corner. The pad opening is 80 x 80 μm .

Total chip size (including scribe line): 5290 μm (horizontal) x 5250 μm (vertical)

| Bond pad # | PIN | Chip pad# | X (μm) | Y (μm) | Name | Type |
|------------|-----|-----------|---------------------|---------------------|-----------|-----------------------|
| 1 | A1 | | | | | |
| 2 | B1 | | | | | |
| 3 | C3 | | | | | |
| 4 | C2 | 1 | 150 | 4695 | Reset_b | in |
| 5 | C1 | 2 | 150 | 4523 | PromD | in |
| 6 | E5 | 3 | 150 | 4350 | PromClk | out |
| 7 | D3 | 4 | 150 | 4177 | PromReset | out |
| 8 | D2 | 5 | 150 | 4006 | TTCTReady | out |
| 9 | D1 | 6 | 150 | 3834 | D_VDD | Digital supply (I/O) |
| 10 | E4 | 7 | 150 | 3661 | D_GND | Digital groun (I/O) |
| 11 | E3 | 8 | 150 | 3488 | D_VDD | Digital supply (core) |
| 12 | E1 | 9 | 150 | 3316 | D_GND | Digital groun (core) |
| 13 | E2 | 10 | 150 | 3143 | GND | Ground |
| 14 | F5 | 11 | 150 | 2970 | VDD | Analogue supply |
| 15 | F4 | | | | | |
| 16 | F1 | 12 | 150 | 2798 | In | Input from PIN |
| 17 | F2 | | | | | |
| 18 | F3 | | | | | |
| 19 | G1 | 13 | 150 | 2626 | In_b | Input from PIN |
| 20 | G6 | | | | | |
| 21 | G2 | 14 | 150 | 2454 | G_GND | Galvanic ground |
| 22 | G3 | 15 | 150 | 2281 | A_VDD | Analogue supply |
| 23 | G4 | 16 | 150 | 2109 | A_VDD | Analogue supply |
| 24 | H2 | 17 | 150 | 1936 | GND | Ground |
| 25 | H1 | 18 | 150 | 1764 | D_VDD | Digital supply (I/O) |
| 26 | G5 | 19 | 150 | 1591 | D_GND | Digital groun (I/O) |
| 27 | H3 | 20 | 150 | 1419 | SCL | I2C clock |
| 28 | J2 | 21 | 150 | 1247 | SDA | I2C data |
| 29 | J1 | 22 | 150 | 1074 | JTAGTDO | out |

| | | | | | | |
|----|-----|----|------|-----|------------------|-----------------------|
| 30 | H4 | 23 | 150 | 901 | JTAGTDI | in |
| 31 | J3 | 24 | 150 | 729 | JTAGTMS | in |
| 32 | K1 | 25 | 150 | 557 | JTAGTCK | in |
| 33 | K2 | | | | | |
| 34 | J4 | | | | | |
| 35 | L1 | | | | | |
| 36 | M1 | | | | | |
| | | | | | | |
| 37 | L2 | | | | | |
| 38 | H5 | | | | | |
| 39 | K3 | | | | | |
| 40 | L3 | | | | | |
| 41 | M3 | | | | | |
| 42 | M2 | 26 | 612 | 135 | JTAGTRST_b | in |
| 43 | K4 | 27 | 782 | 135 | Serial_B_Channel | out |
| 44 | H6 | 28 | 952 | 135 | BCnt<11> | out |
| 45 | L4 | 29 | 1122 | 135 | BCnt<10> | out |
| 46 | M4 | 30 | 1292 | 135 | D_VDD | Digital supply (I/O) |
| 47 | K5 | 31 | 1460 | 135 | D_GND | Ground (I/O) |
| 48 | L5 | 32 | 1630 | 135 | BCnt<9> | out |
| 49 | M5 | 33 | 1800 | 135 | BCnt<8> | out |
| 50 | J5 | 34 | 1970 | 135 | BCnt<7> | out |
| 51 | J6 | 35 | 2139 | 135 | BCnt<6> | out |
| 52 | L6 | 36 | 2309 | 135 | BCnt<5> | out |
| 53 | M6 | 37 | 2479 | 135 | BCnt<4> | out |
| 54 | K6 | 38 | 2648 | 135 | BCnt<3> | out |
| 55 | G7 | 39 | 2817 | 135 | BCnt<2> | out |
| 56 | M7 | 40 | 2987 | 135 | BCnt<1> | out |
| 57 | L7 | 41 | 3157 | 135 | BCnt<0> | out |
| 58 | H7 | | | | | |
| 59 | K7 | 42 | 3327 | 135 | D_VDD | Digital supply (core) |
| 60 | M8 | 43 | 3496 | 135 | GND | Ground (core) |
| 61 | L8 | 44 | 3666 | 135 | BCntStr | out |
| 62 | J7 | 45 | 3838 | 135 | EvCntHStr | out |
| 63 | K8 | 46 | 4005 | 135 | EvCntLStr | out |
| 64 | M9 | 47 | 4175 | 135 | BCntRes | out |
| 65 | L9 | 48 | 4345 | 135 | EvCntRes | out |
| 66 | J8 | 49 | 4514 | 135 | L1Accept | out |
| 67 | K9 | 50 | 4683 | 135 | Brcst<7> | out |
| 68 | M10 | | | | | |
| 69 | L10 | | | | | |
| 70 | K10 | | | | | |
| 71 | L11 | | | | | |
| 72 | M11 | | | | | |

| | | | | | | |
|-----|-----|----|------|------|---------------|-----------------------|
| 73 | M12 | | | | | |
| 74 | J9 | | | | | |
| 75 | H8 | | | | | |
| 76 | L12 | | | | | |
| 77 | K11 | 51 | 5161 | 557 | Brcst<6> | out |
| 78 | K12 | 52 | 5161 | 729 | BrcstStr2 | out |
| 79 | J10 | 53 | 5161 | 901 | Brcst<5> | out |
| 80 | J11 | 54 | 5161 | 1073 | Brcst<4> | out |
| 81 | J12 | 55 | 5161 | 1246 | D_VDD | Digital supply (core) |
| 82 | H9 | 56 | 5161 | 1419 | D_VDD | Digital supply (I/O) |
| 83 | H10 | 57 | 5161 | 1591 | D_GND | Ground (I/O) |
| 84 | H12 | 58 | 5161 | 1763 | D_VDD_C | Special I/O power |
| 85 | H11 | 59 | 5161 | 1936 | Clock40 | 40.08 MHz clock |
| 86 | G8 | 60 | 5161 | 2109 | D_GND_C | Special I/O ground |
| 87 | G9 | 61 | 5161 | 2281 | D_VDD_C | Special I/O power |
| 88 | G12 | 62 | 5161 | 2453 | Clock40Des1 | Deskewed clock 1 |
| 89 | G11 | 63 | 5161 | 2626 | D_GND_C | Special I/O ground |
| 90 | G10 | 64 | 5161 | 2798 | D_VDD_C | Special I/O power |
| 91 | F9 | | | | | |
| 92 | F11 | | | | | |
| 93 | F12 | 65 | 5161 | 2971 | Clock40Des2 | Deskewed clock 2 |
| 94 | F10 | | | | | |
| 95 | F8 | 66 | 5161 | 3143 | ClockL1Accept | Clock & L1A |
| 96 | E11 | 67 | 5161 | 3316 | D_GND_C | Special I/O ground |
| 97 | E12 | 68 | 5161 | 3489 | D_VDD | Digital supply (I/O) |
| 98 | E10 | 69 | 5161 | 3661 | D_GND | Ground (I/O) |
| 99 | F7 | 70 | 5161 | 3833 | D_GND | Ground (core) |
| 100 | D11 | 71 | 5161 | 4005 | Brcst<3> | out |
| 101 | D12 | 72 | 5161 | 4178 | Brcst<2> | out |
| 102 | D10 | 73 | 5161 | 4350 | BrcstStr1 | out |
| 103 | E9 | 74 | 5161 | 4523 | SinErrStr | out |
| 104 | C12 | 75 | 5161 | 4696 | DbErrStr | out |
| 105 | C11 | | | | | |
| 106 | D9 | | | | | |

| | | | | | | |
|-----|-----|-----|------|------|------------|----------------------|
| 107 | B11 | | | | | |
| 108 | B12 | | | | | |
| | | | | | | |
| 109 | A12 | | | | | |
| 110 | A11 | | | | | |
| 111 | C10 | | | | | |
| 112 | B10 | | | | | |
| 113 | A10 | | | | | |
| 114 | E8 | 76 | 4684 | 5117 | SubAddr<0> | out |
| 115 | E7 | 77 | 4514 | 5117 | SubAddr<1> | out |
| 116 | B9 | 78 | 4345 | 5117 | SubAddr<2> | out |
| 117 | A9 | 79 | 4175 | 5117 | SubAddr<3> | out |
| 118 | C9 | 80 | 4005 | 5117 | SubAddr<4> | out |
| 119 | C8 | 81 | 3835 | 5117 | D_GND | Ground (I/O) |
| 120 | B8 | 82 | 3666 | 5117 | D_VDD | Digital supply (I/O) |
| 121 | A8 | 83 | 3496 | 5117 | SubAddr<5> | out |
| 122 | D8 | 84 | 3327 | 5117 | SubAddr<6> | out |
| 123 | F6 | 85 | 3157 | 5117 | SubAddr<7> | out |
| 124 | B7 | 86 | 2988 | 5117 | DQ<0> | out |
| 125 | A7 | 87 | 2818 | 5117 | DQ<1> | out |
| 126 | C7 | 88 | 2648 | 5117 | DQ<2> | out |
| 127 | D7 | 89 | 2479 | 5117 | DQ<3> | out |
| 128 | A6 | 90 | 2309 | 5117 | DoutStr | out |
| 129 | B6 | 91 | 2139 | 5117 | Dout<0> | out |
| 130 | C6 | 92 | 1969 | 5117 | Dout<1> | out |
| 131 | D6 | 93 | 1800 | 5117 | D_GND | Ground (I/O) |
| 132 | A5 | 94 | 1631 | 5117 | D_VDD | Digital supply (I/O) |
| 133 | B5 | 95 | 1461 | 5117 | Dout<2> | out |
| 134 | C5 | 96 | 1291 | 5117 | Dout<3> | out |
| 135 | D5 | 97 | 1122 | 5117 | Dout<4> | out |
| 136 | A4 | 98 | 952 | 5117 | Dout<5> | out |
| 137 | B4 | 99 | 782 | 5117 | Dout<6> | out |
| 138 | C4 | 100 | 613 | 5117 | Dout<7> | out |
| 139 | E6 | | | | | |
| 140 | B3 | | | | | |
| 141 | A3 | | | | | |
| 142 | D4 | | | | | |
| 143 | A2 | | | | | |
| 144 | B2 | | | | | |

