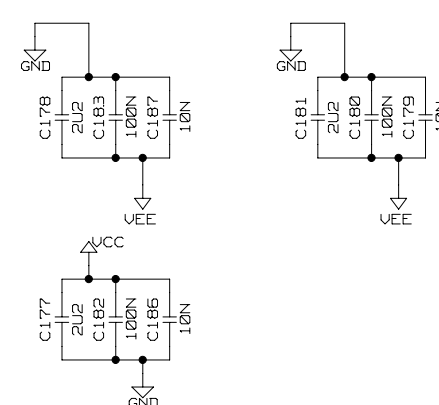


Fri Nov 05 09:58:07 2010		
DRAWING TITLE		
VME BUFFERING		
SIZE	REV.	DRAWING NO.
A2		
SCALE	SHEET 2 OF 11	

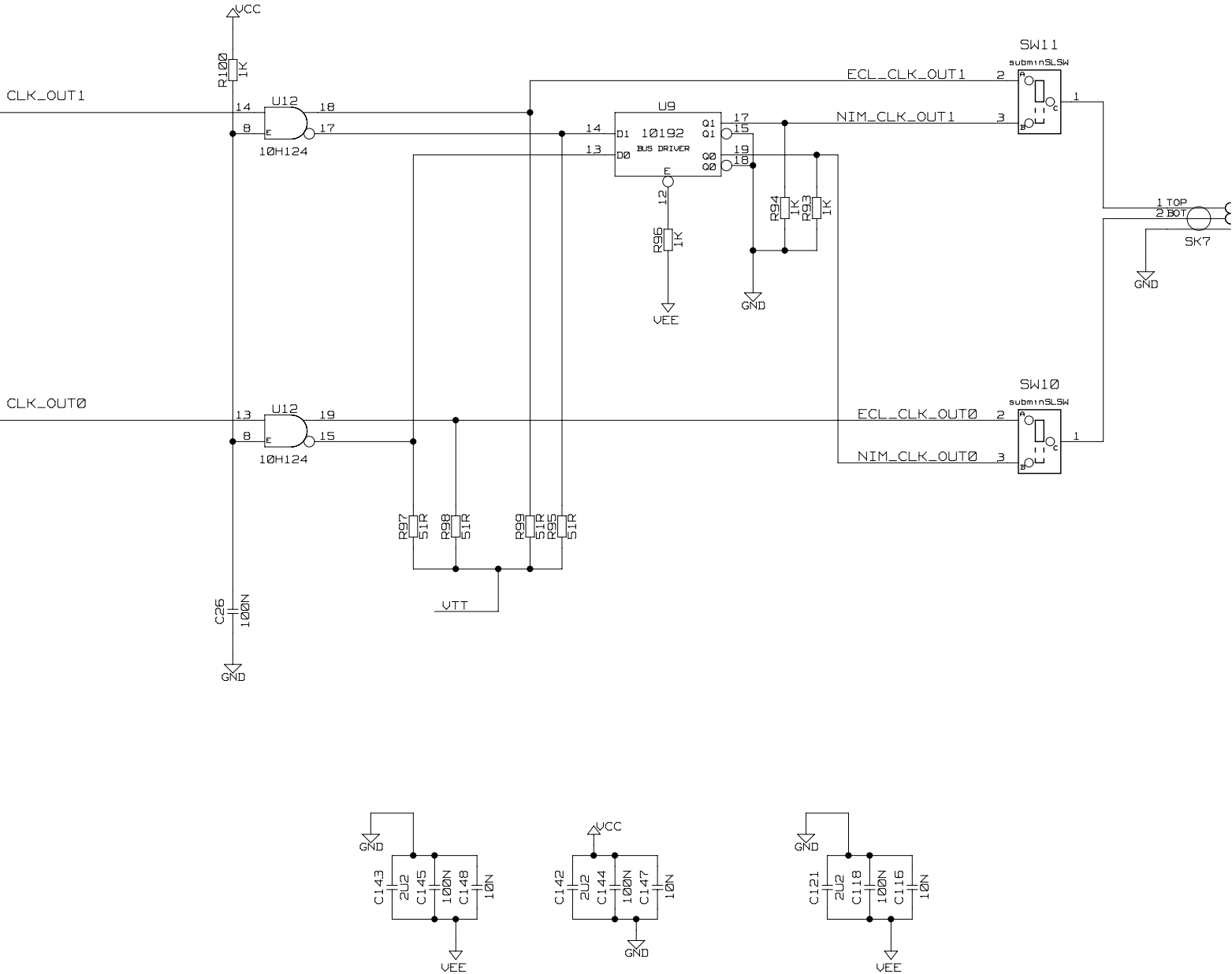
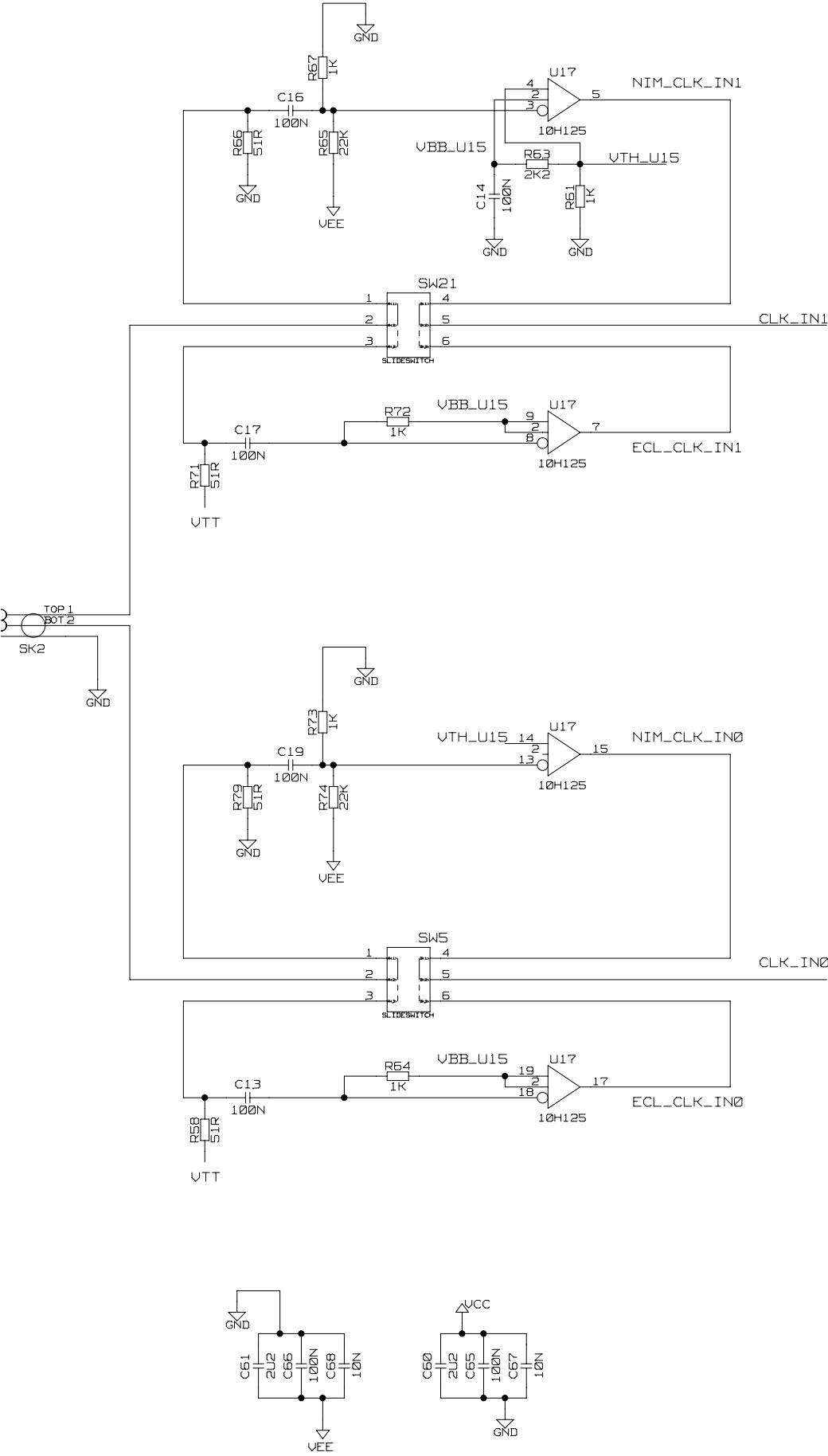


1+3 = TTL OUT

SHEET 4 OF 11

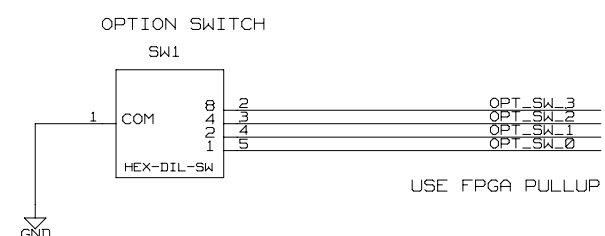
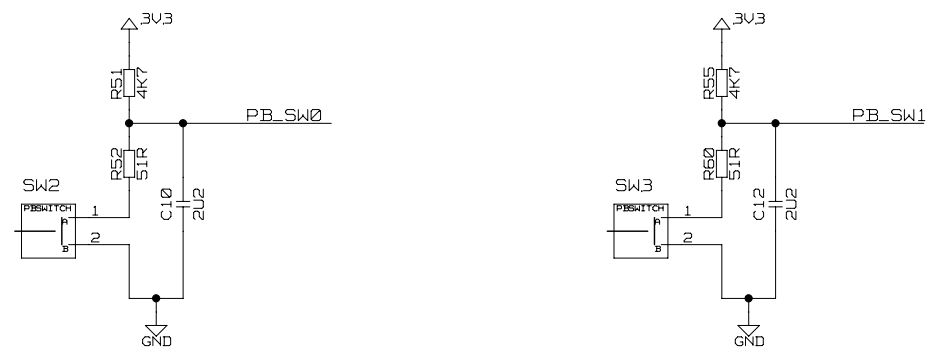
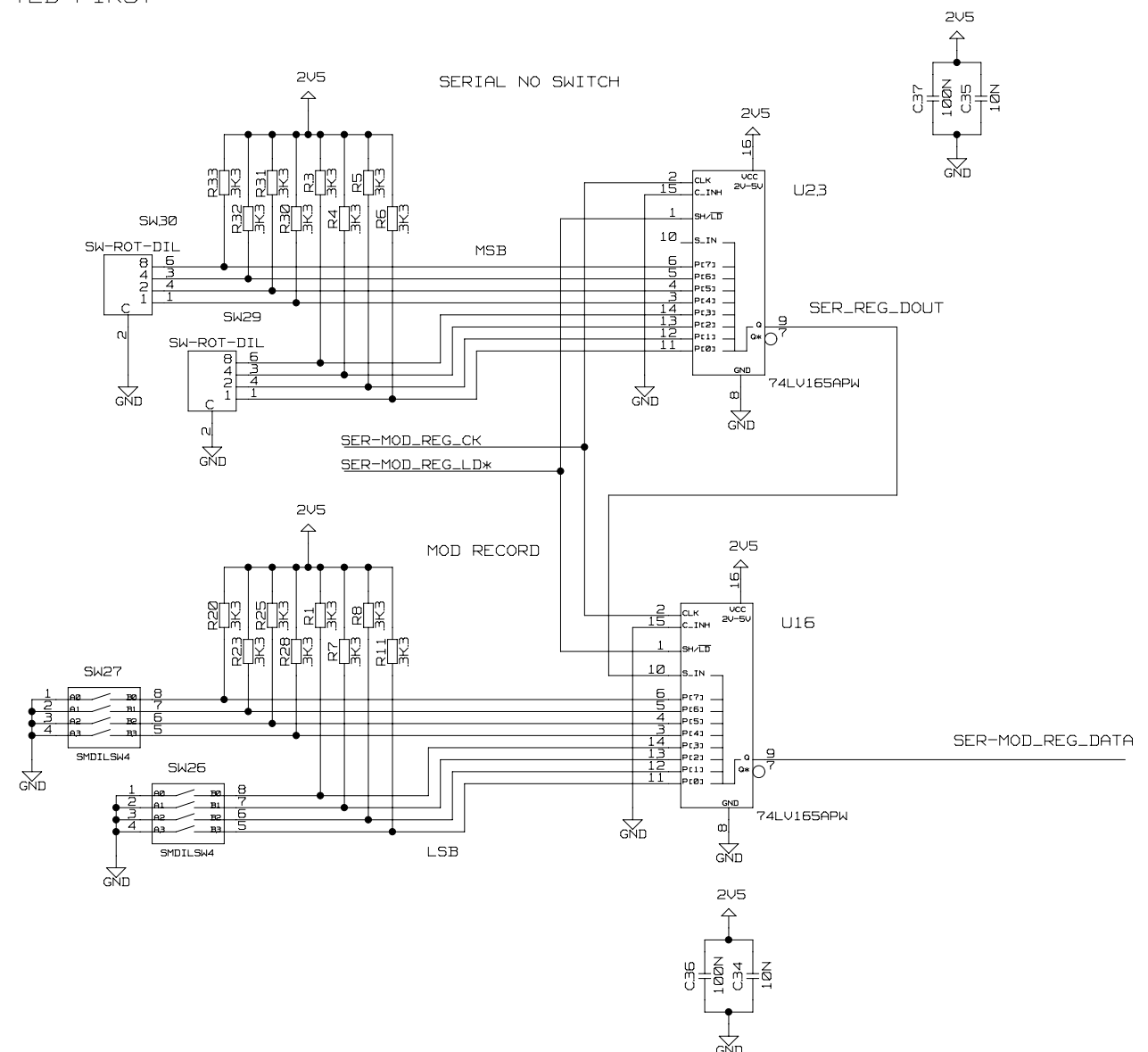
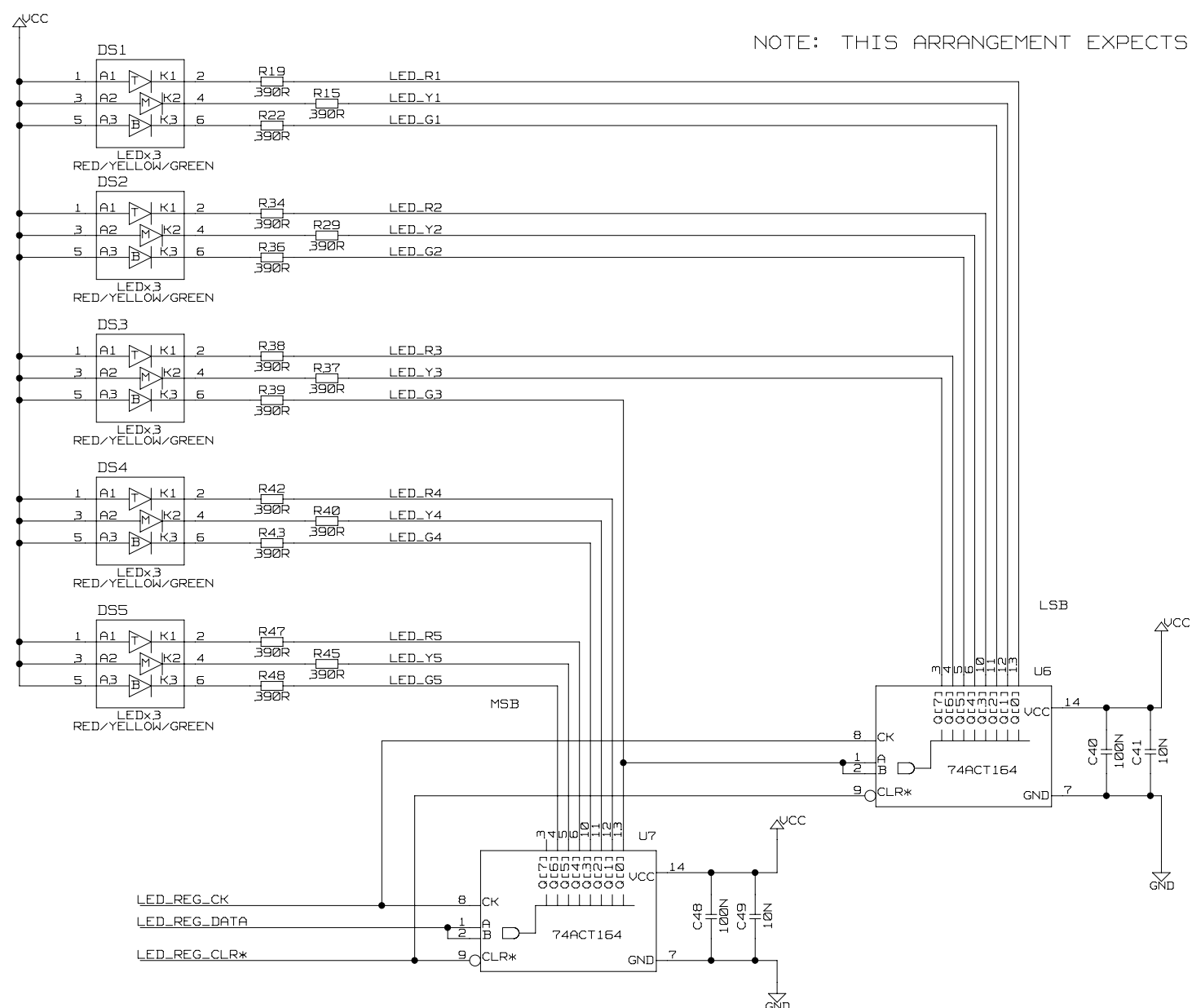
NIM / ECL CLK IN SELECTION
SW21, SW22 SELECT
1+2 & 4+5 = NIM IN
2+3 & 5+6 = ECL IN

NIM / ECL CLK OUT SELECTION
SWITCHES SW19, SW20 SELECT
1+2 = ECL OUT
1+3 = NIM OUT



Fri Nov 05 09:58:08 2010		
DRAWING TITLE		
CLOCKS IN & OUT		
SIZE A2	REV.	DRAWING NO.
SCALE		SHEET 5 OF 11

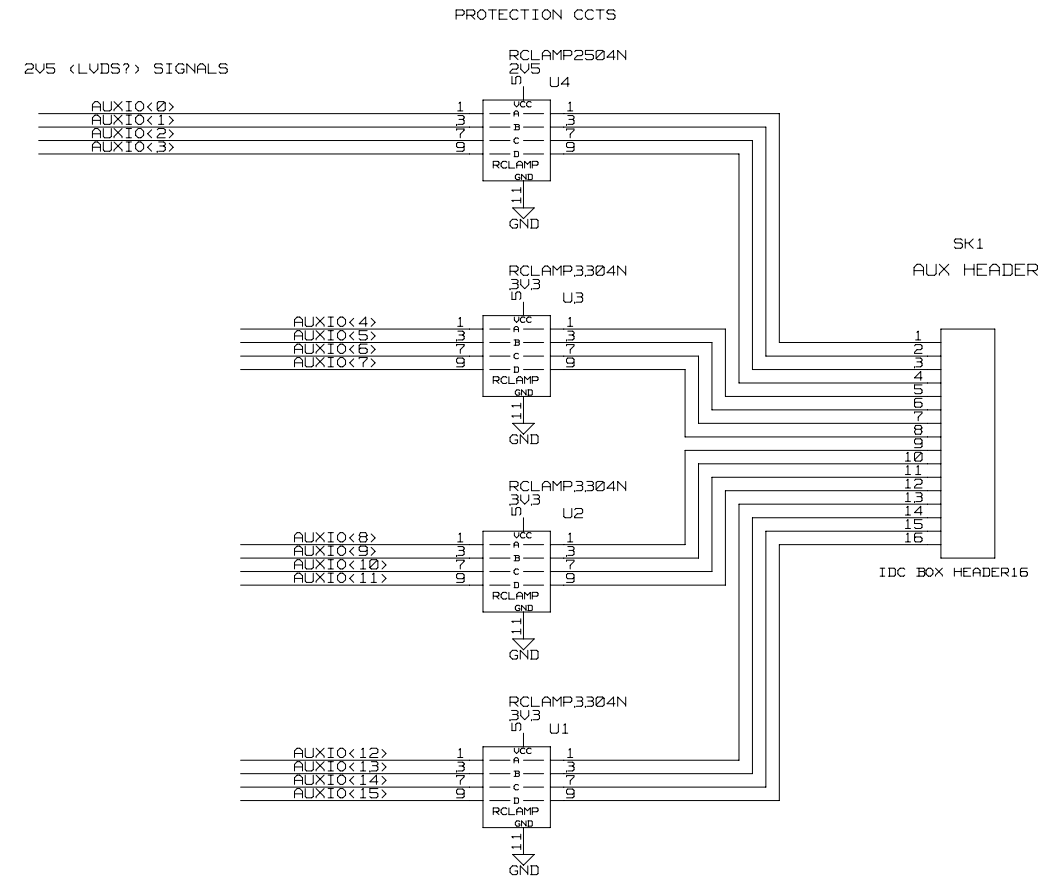
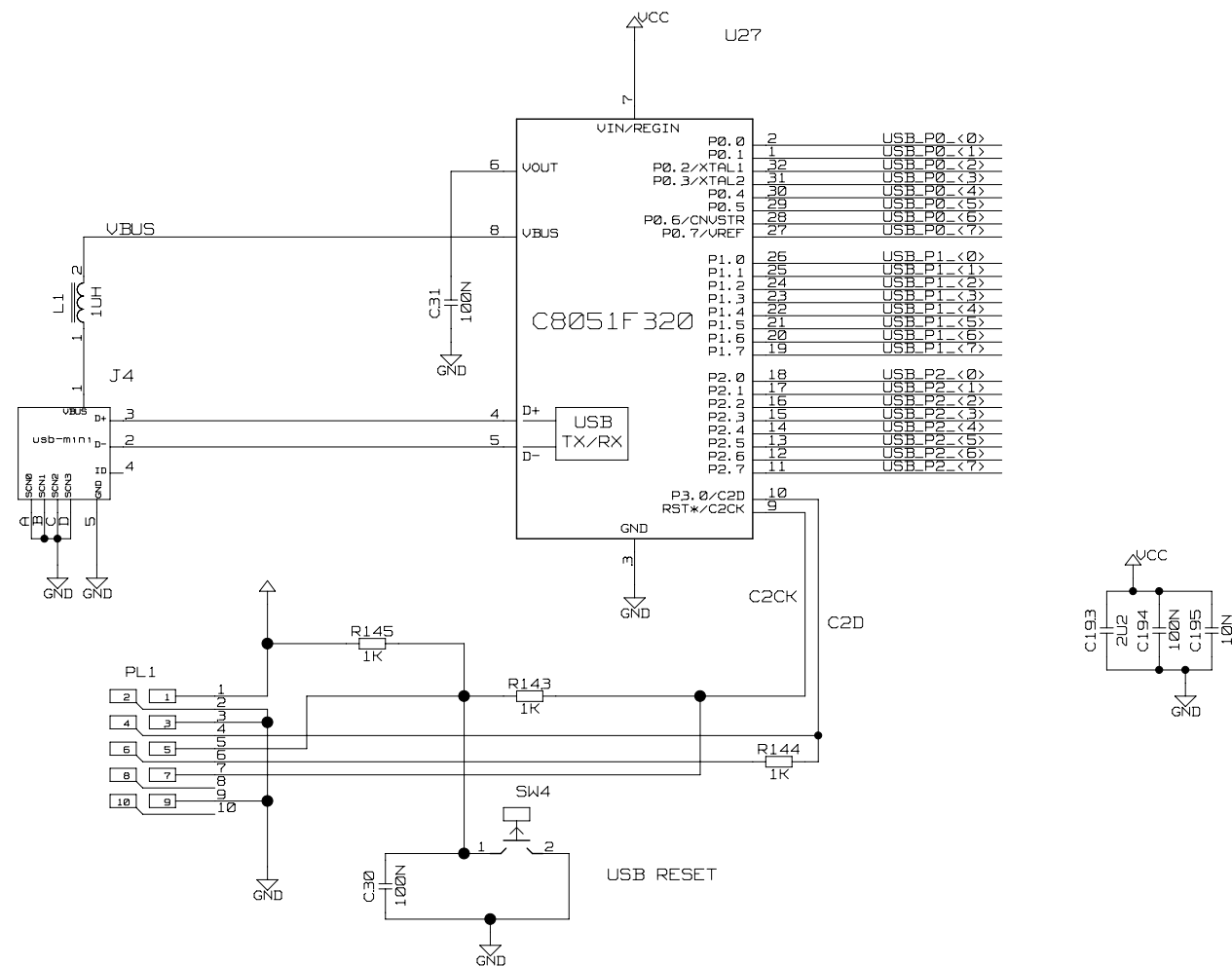
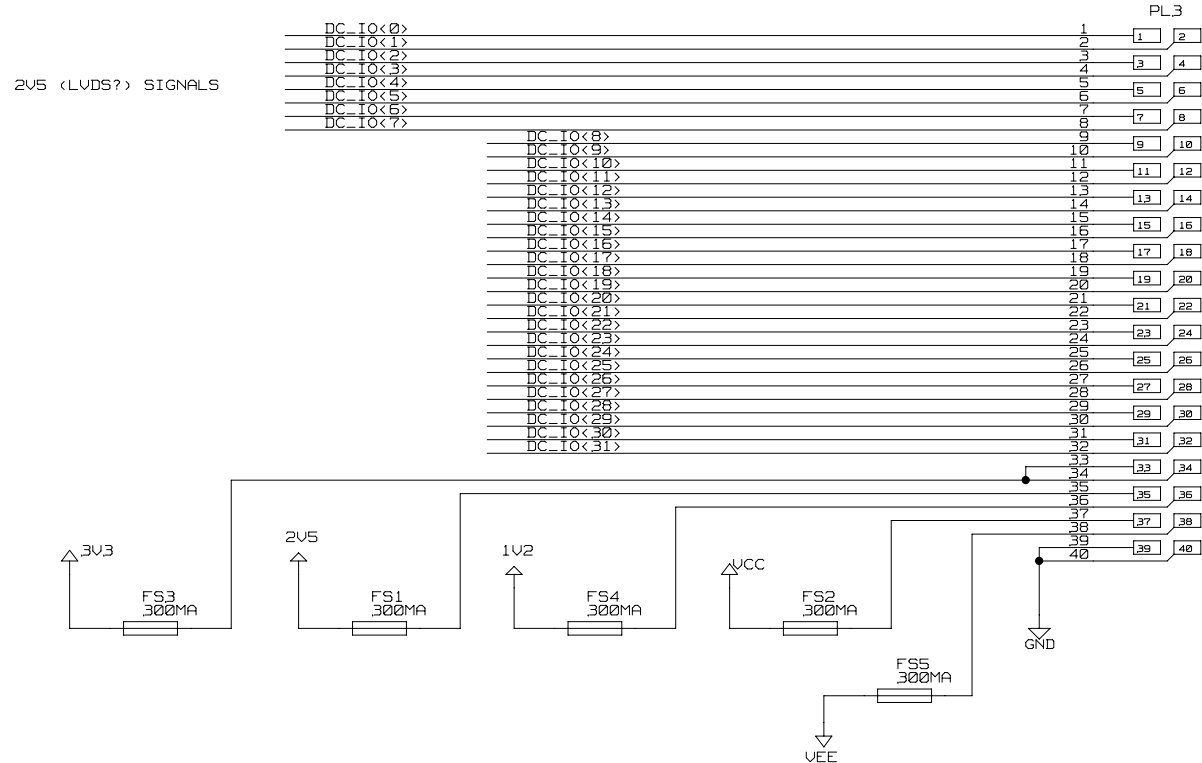
NOTE: THIS ARRANGEMENT EXPECTS LSB SHIFTED FIRST



Fri Nov 05 09:58:06 2010		
DRAWING TITLE		
FRONT PANEL - 1		
SIZE	REV.	DRAWING NO.
A2		
SCALE	SHEET 6 OF 11	

THIS IS A 40 PIN DIL UNSHROUDED HEADER SUITABLE FOR A RIBBON CABLE CONNECTOR
OR STRIAIGHT TO A DAUGHTER CARD

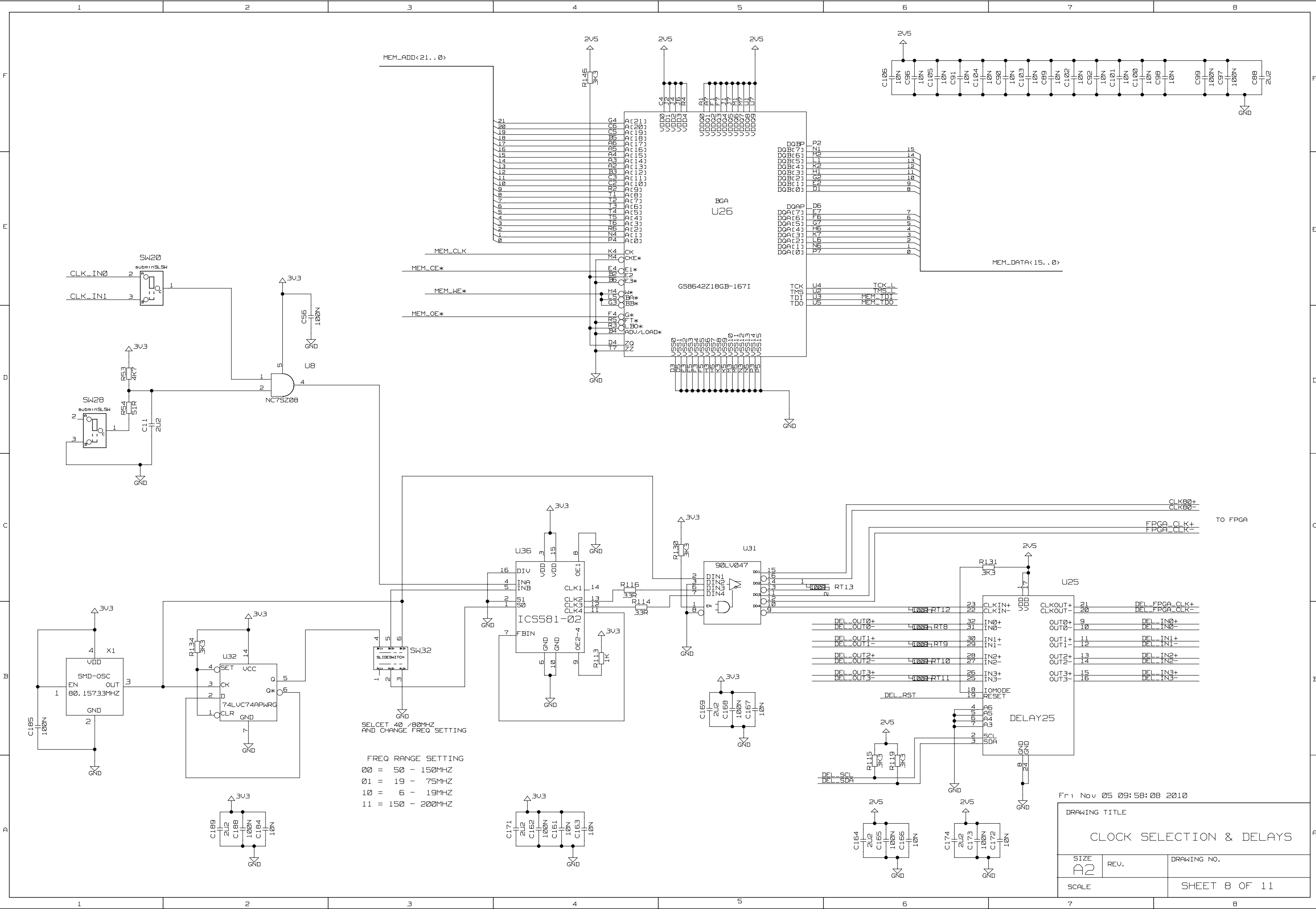
DAUGHTER CARD I/O



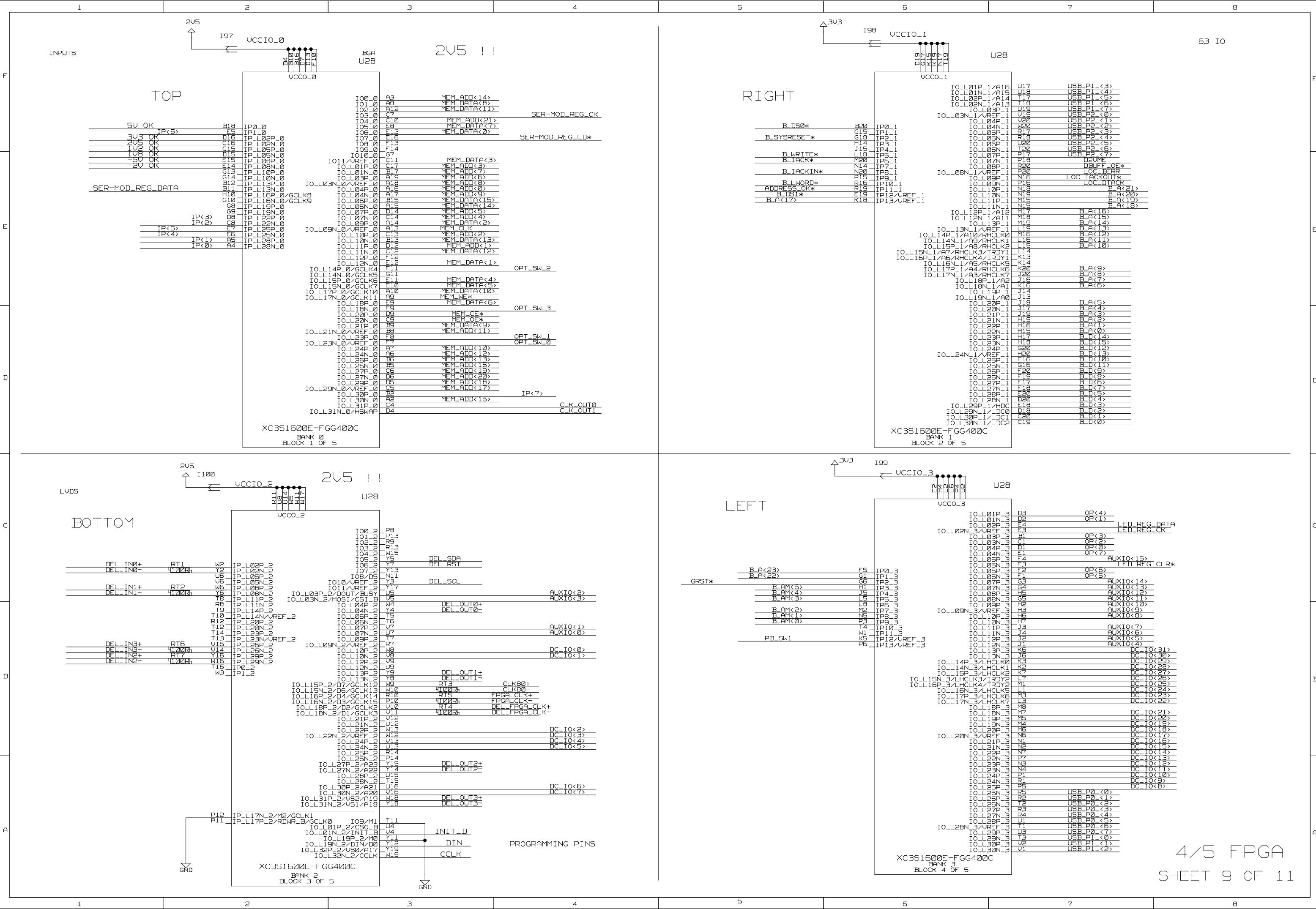
Fri Nov 05 09:58:08 2010

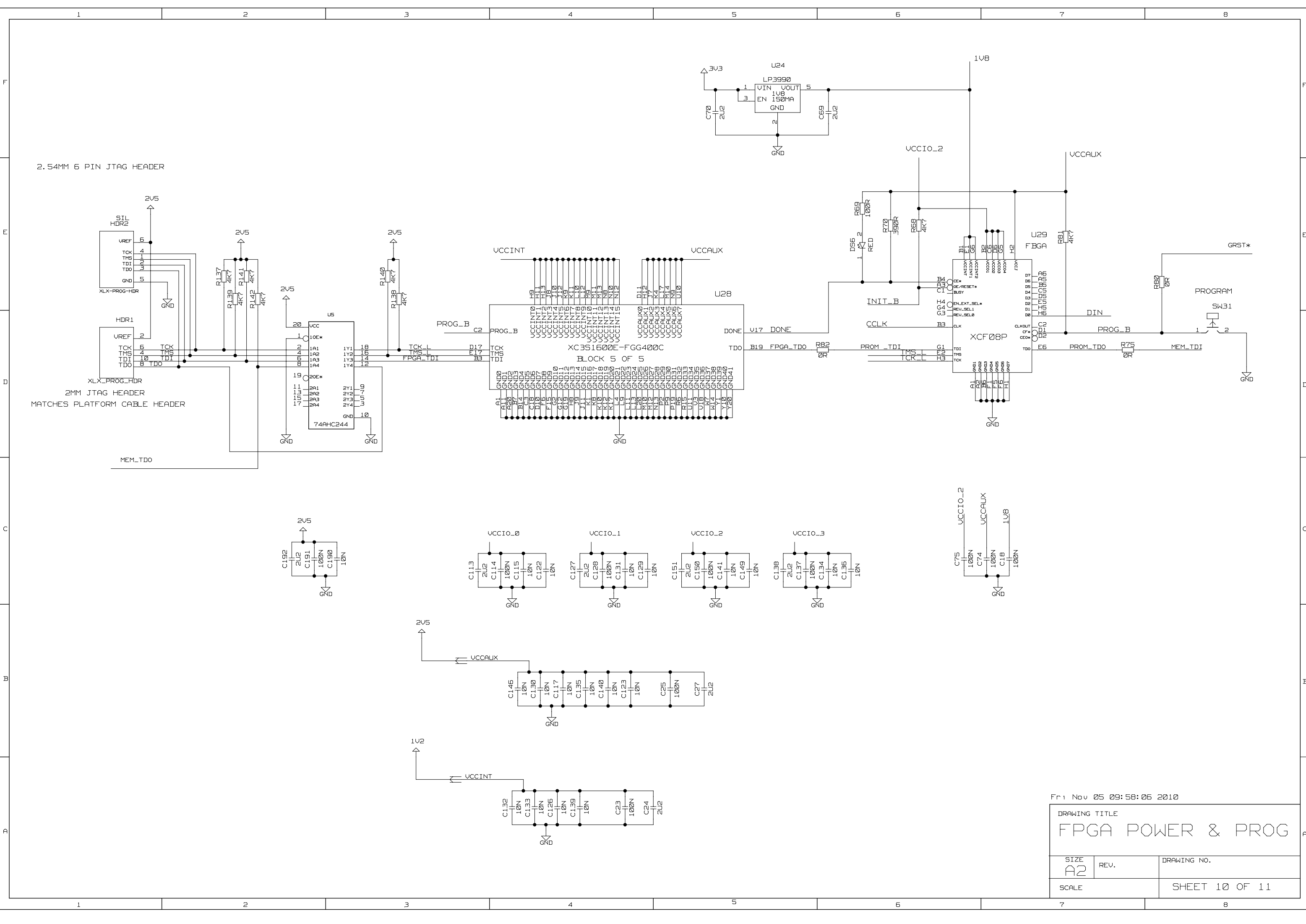
DRAWING TITLE
FRONT PANEL - 2

SIZE A2	REV.	DRAWING NO.
SCALE	SHEET 7 OF 11	



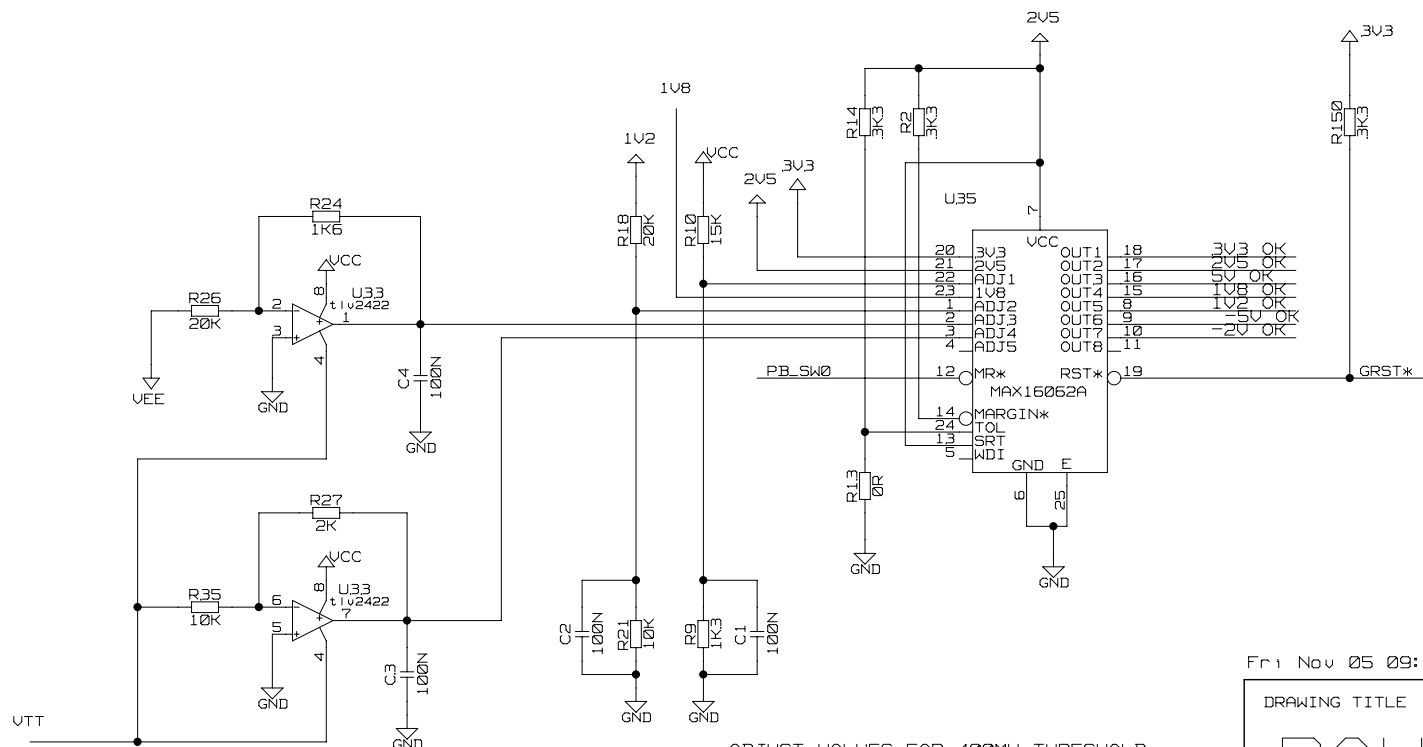
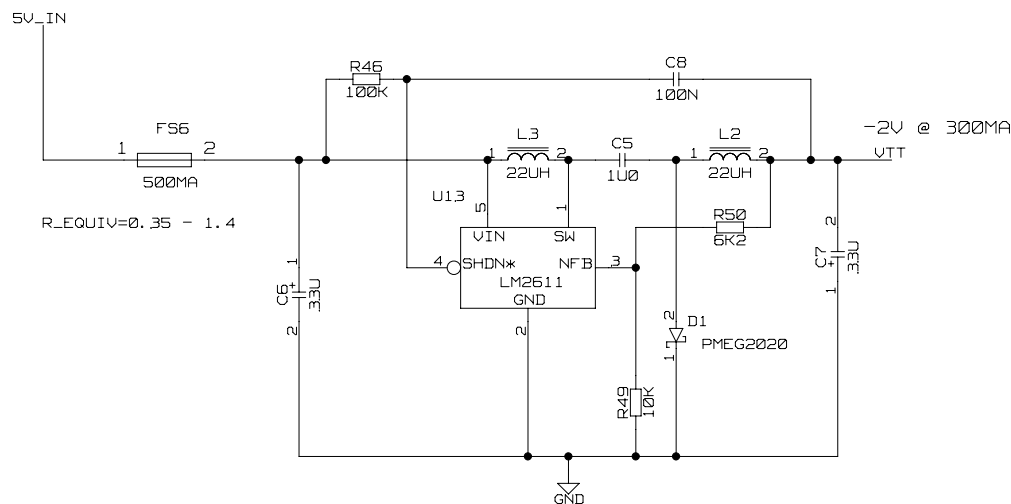
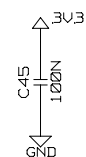
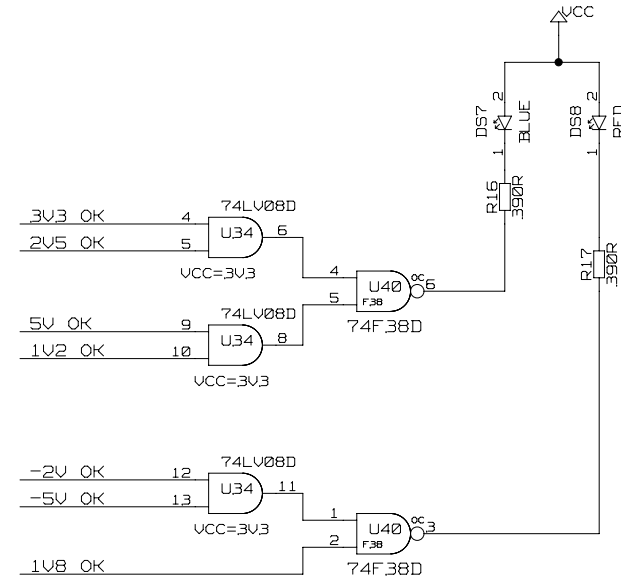
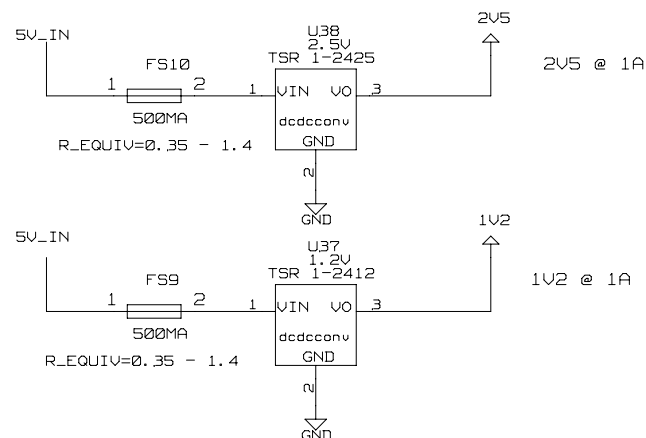
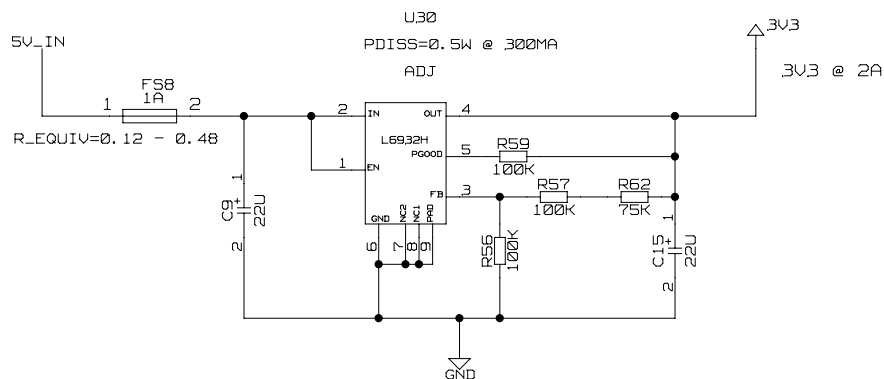
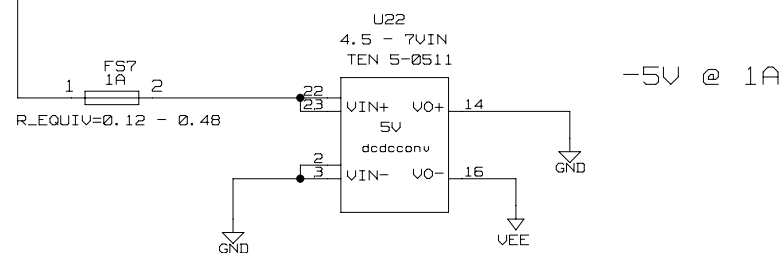
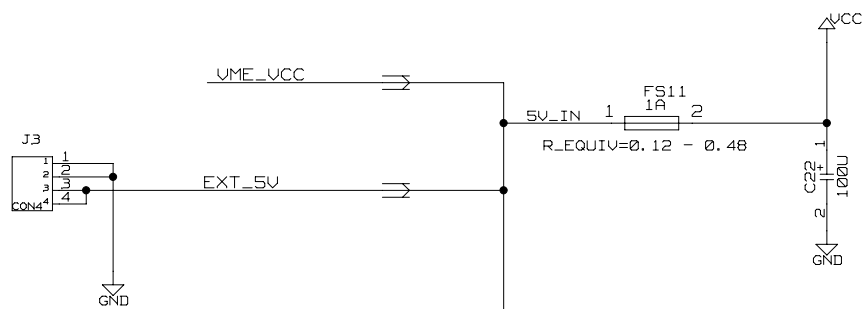
Fri Nov 05 09:58:08 2010		
DRAWING TITLE		
CLOCK SELECTION & DELAYS		
SIZE A2	REV.	DRAWING NO.
SCALE		SHEET 8 OF 11





Fri Nov 05 09:58:06 2010

DRAWING TITLE		
FPGA POWER & PROG		
SIZE	REV.	DRAWING NO.
A2		
SCALE		SHEET 10 OF 11



ADJUST VALUES FOR 400MV THRESHOLD
TOL: GND = 5%, VCC = 10%

Fri Nov 05 09:58:06 2010

DRAWING TITLE		
POWER		
SIZE A2	REV.	DRAWING NO.
SCALE	SHEET 11 OF 11	