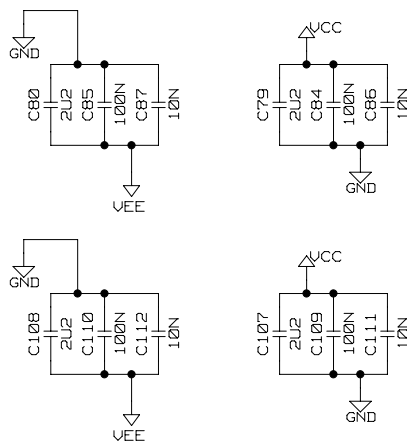
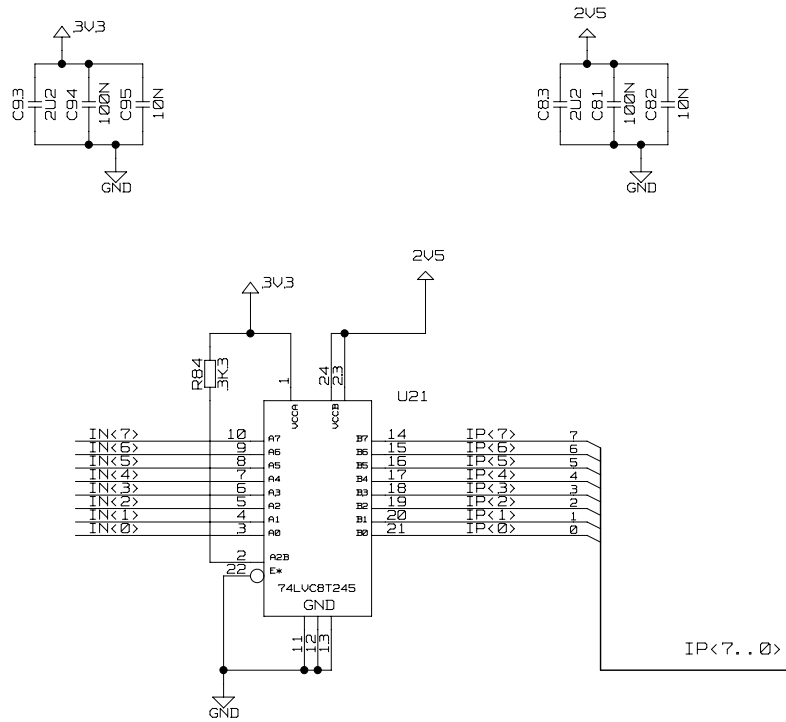
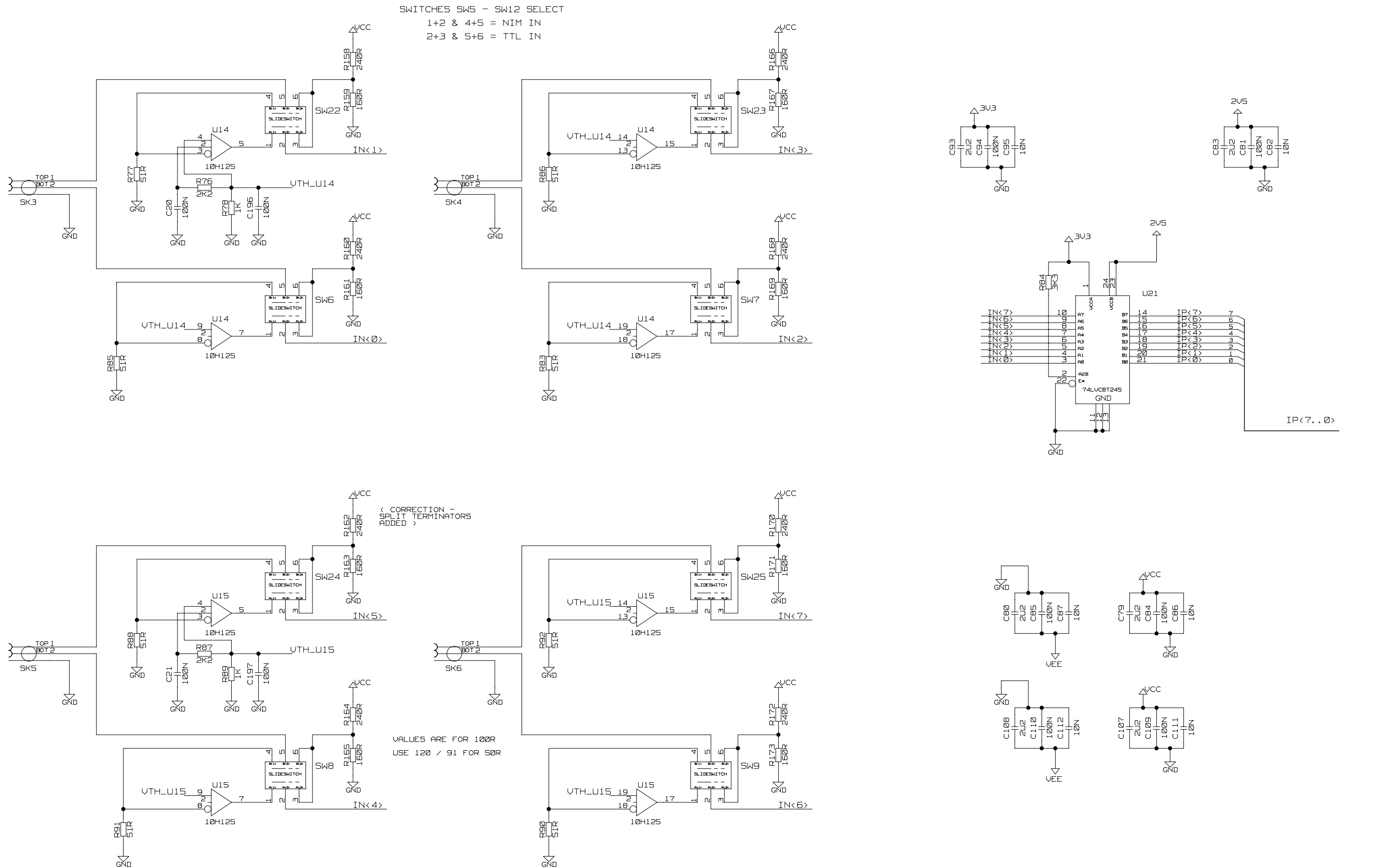


1 2 3 4 5 6 7 8

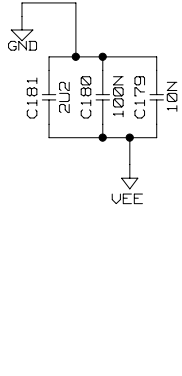
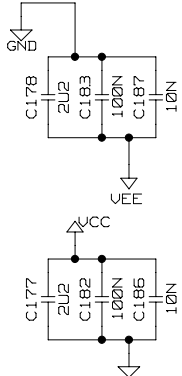
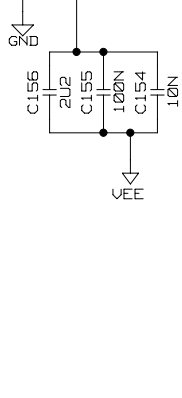
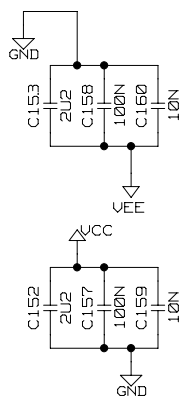
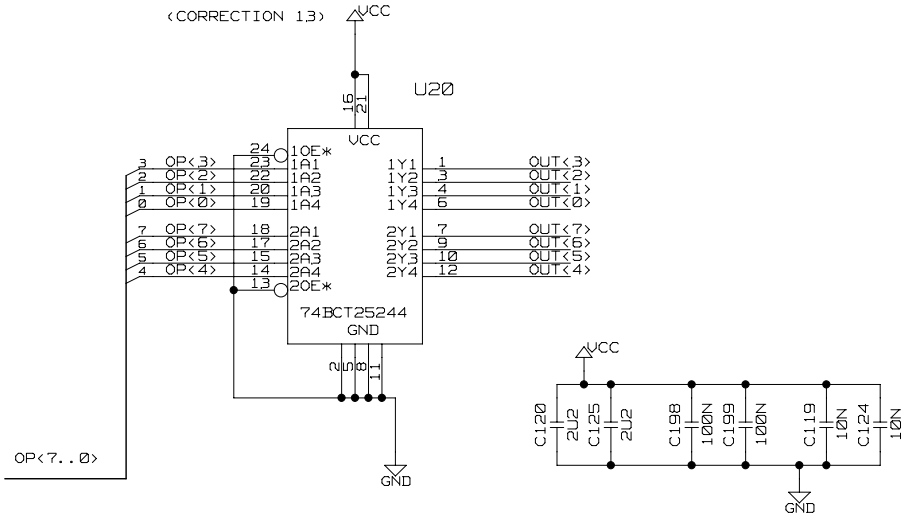
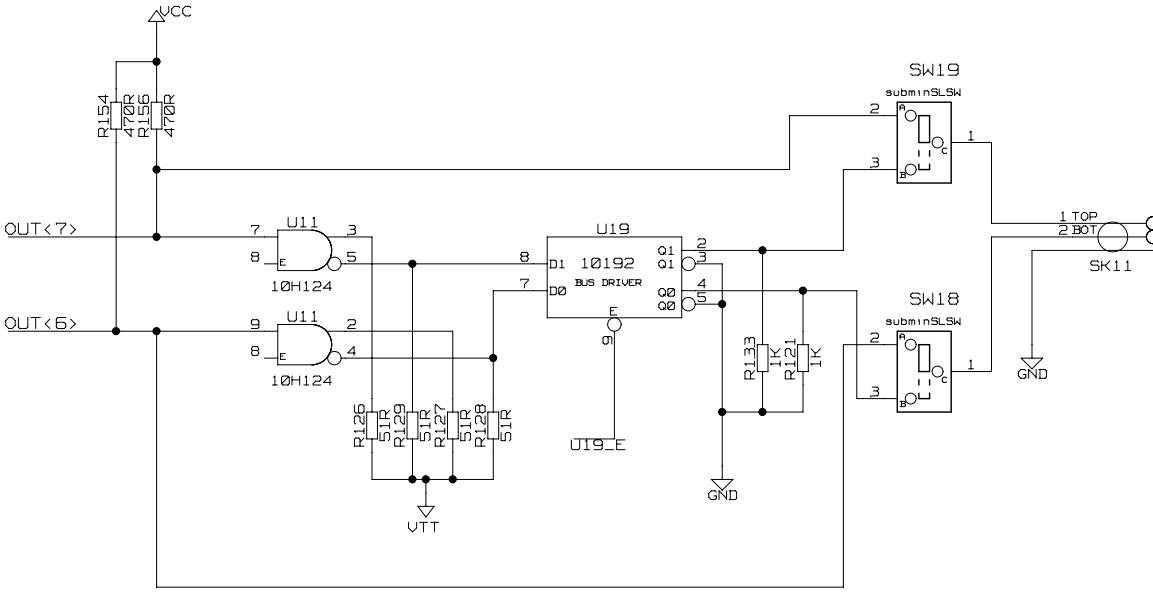
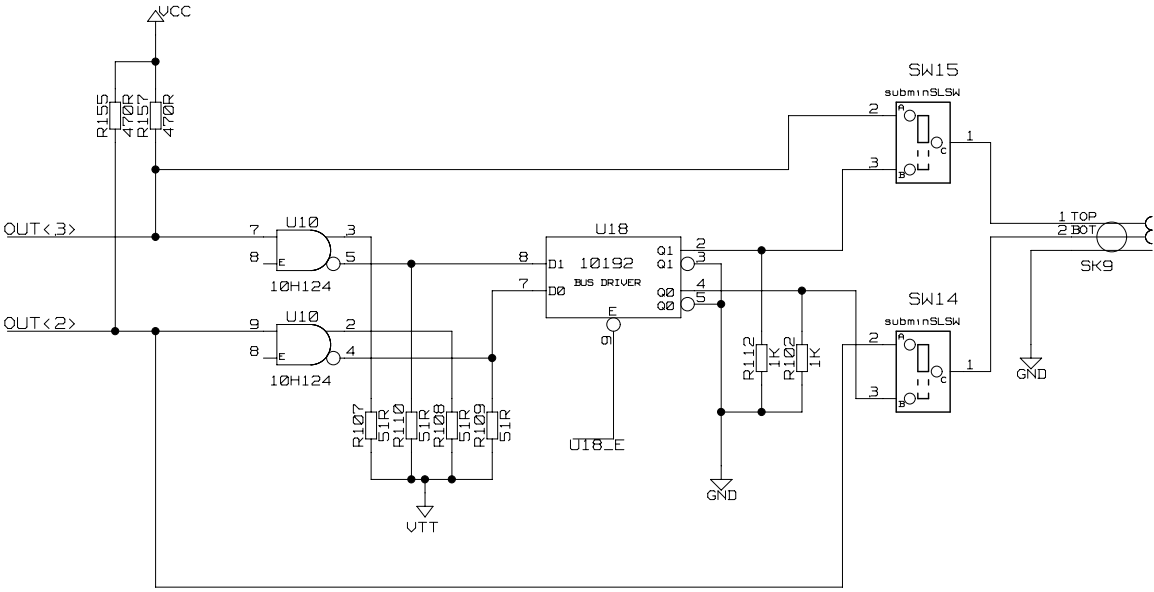
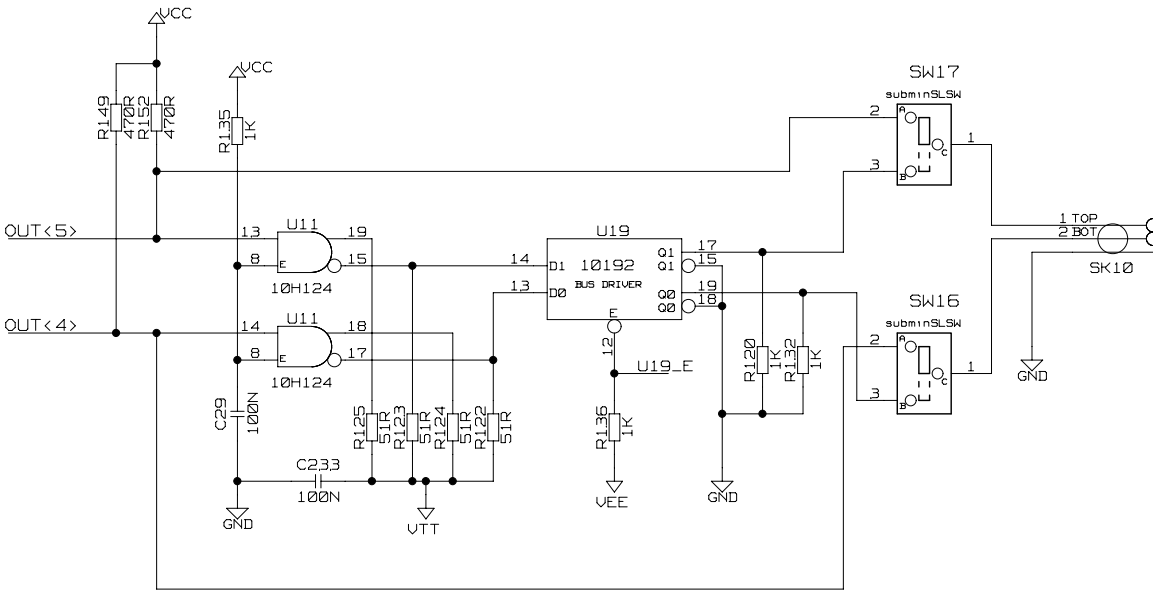
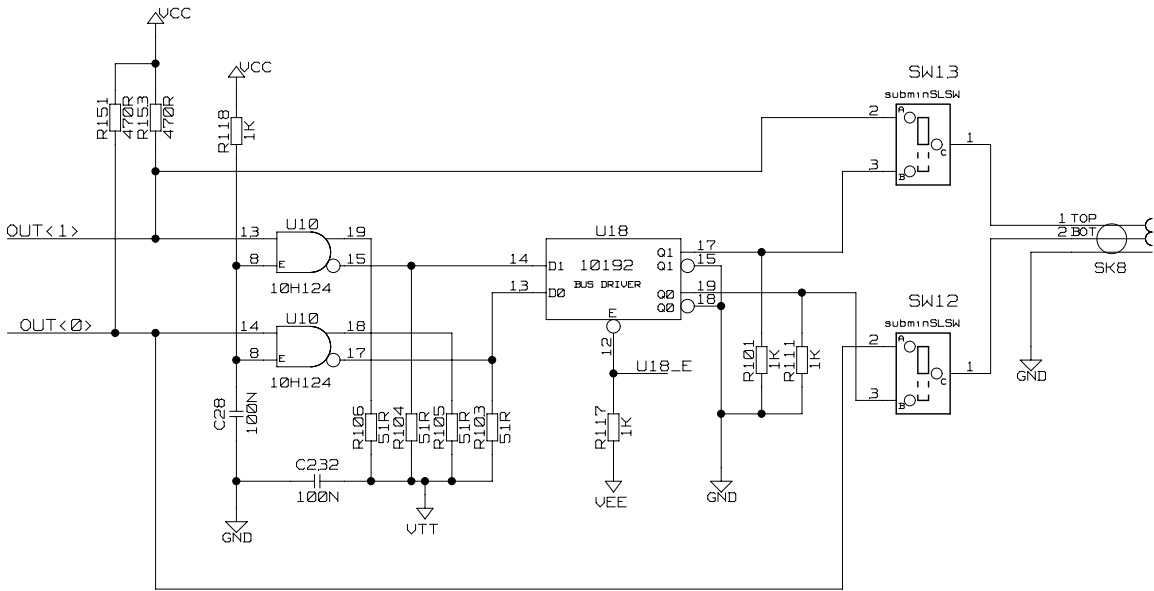


Tue Apr 19 12:07:59 2011

DRAWING TITLE		DAVE 1P1	
NIM /		TTL INPUTS	
SIZE A2	REV.	DRAWING NO.	
SCALE		SHEET 3 OF 11	

1 2 3 4 5 6 7 8

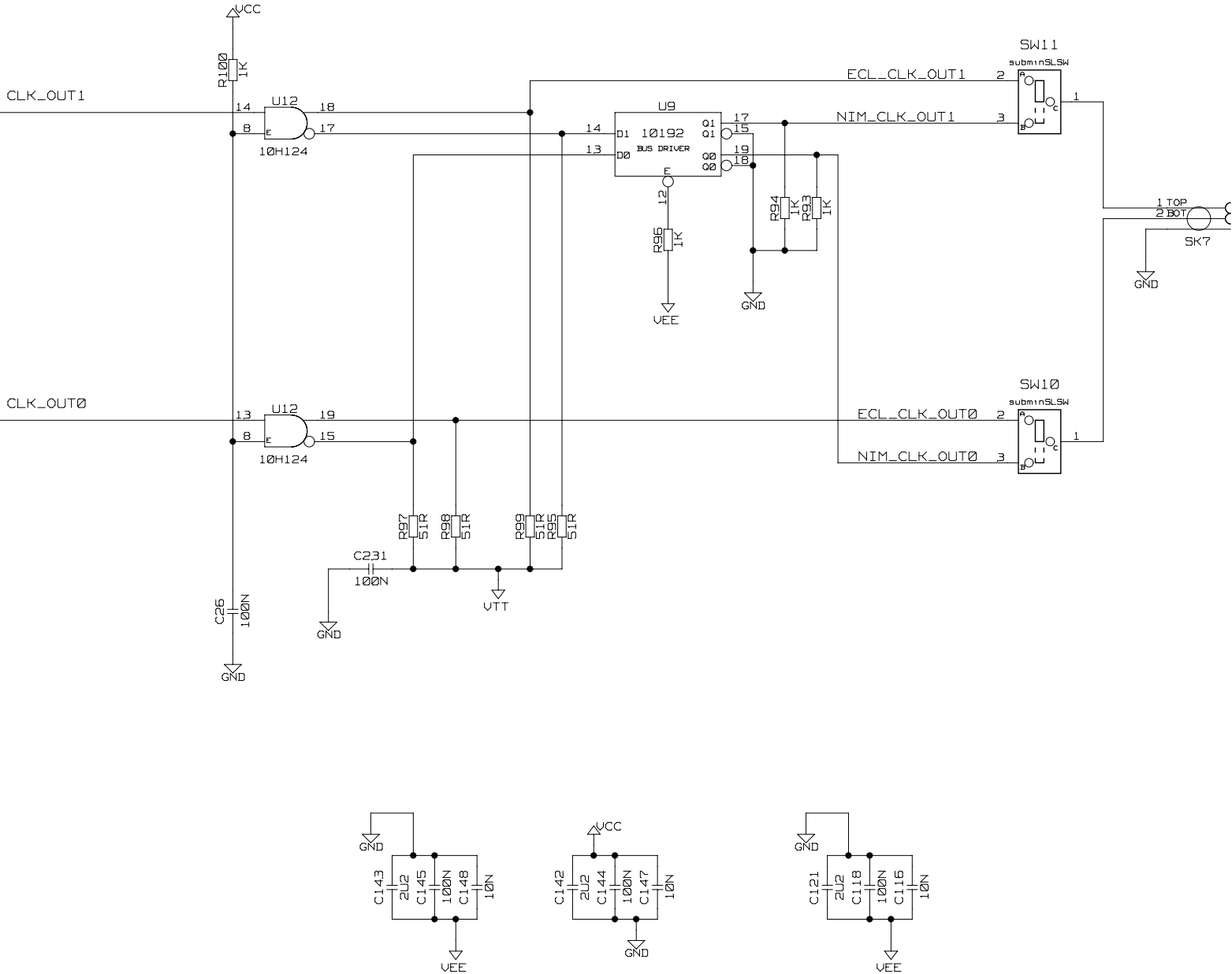
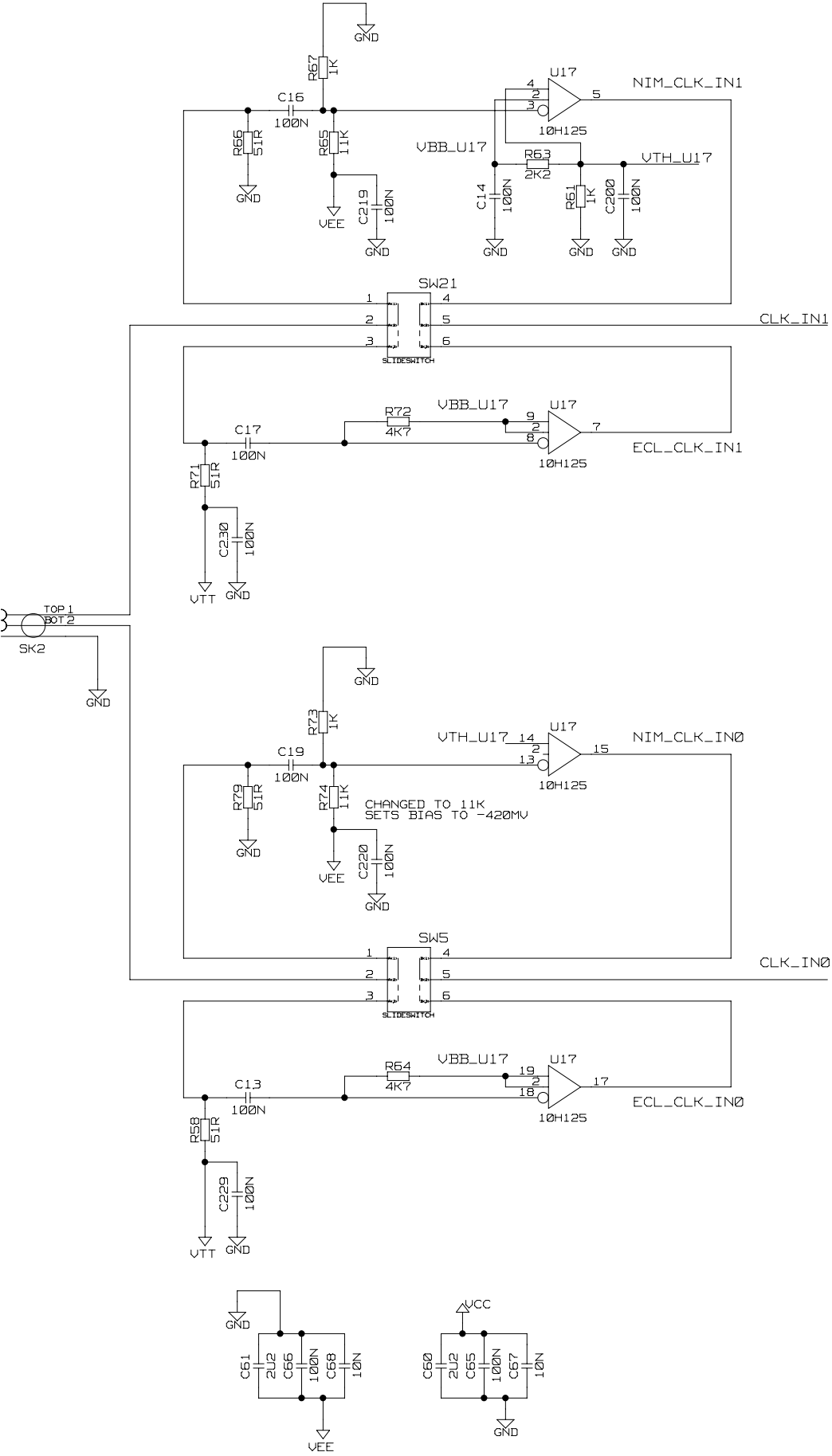
SWITCHES SW13 - SW20 SELECT
1+2 = NIM OUT
1+3 = TTL OUT



Tue Apr 19 12:08:00 2011		
DRAWING TITLE DAVE 1P1		
NIM / TTL OUT		
SIZE A2	REV.	DRAWING NO.
SCALE		SHEET 4 OF 11

NIM / ECL CLK IN SELECTION
SW21, SW22 SELECT
1+2 & 4+5 = NIM IN
2+3 & 5+6 = ECL IN

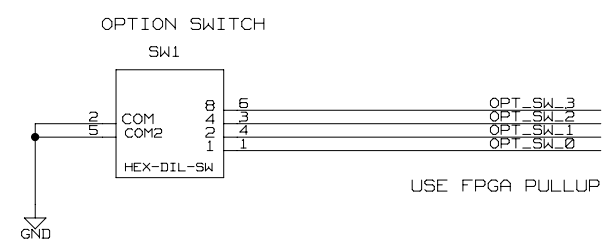
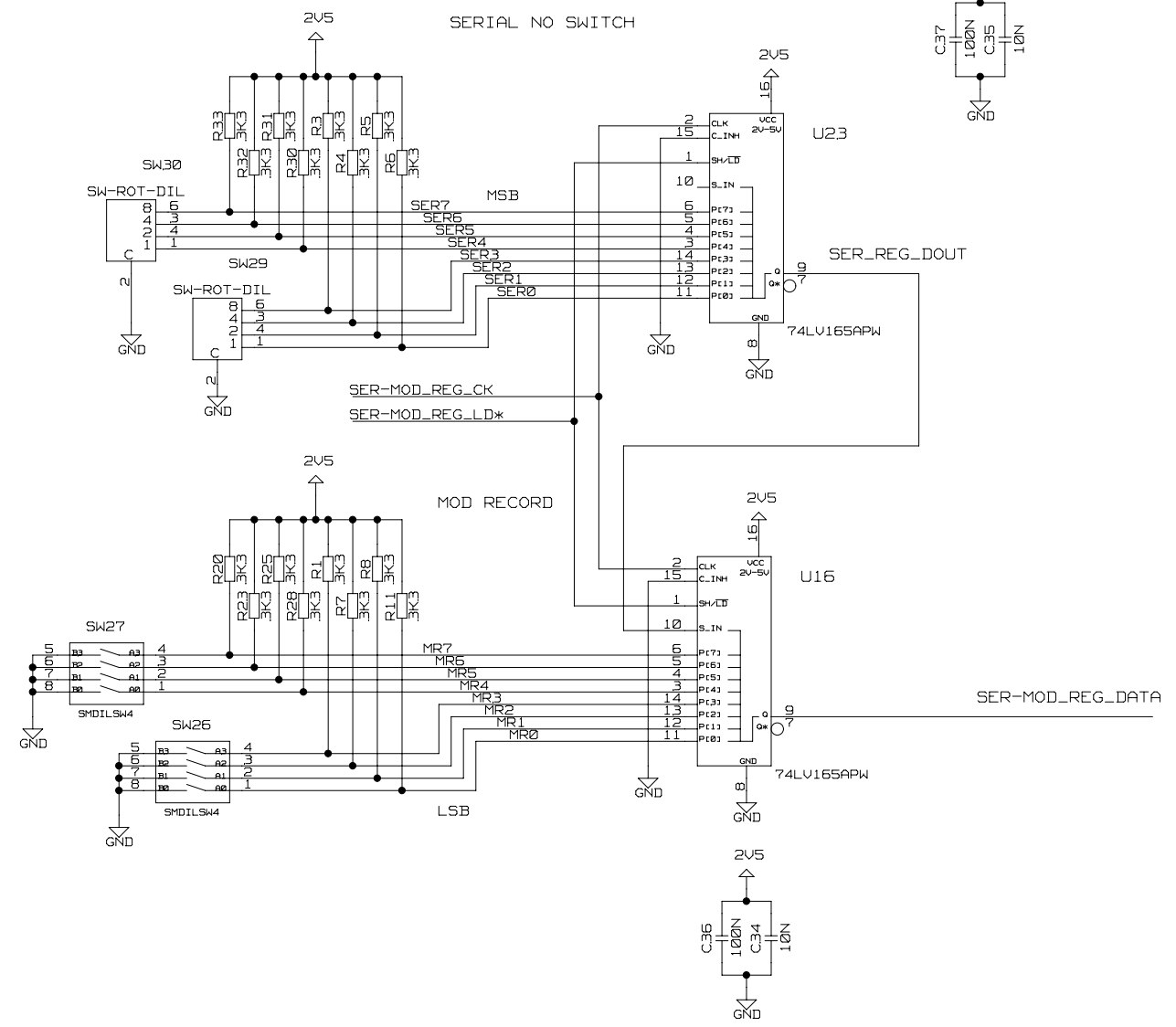
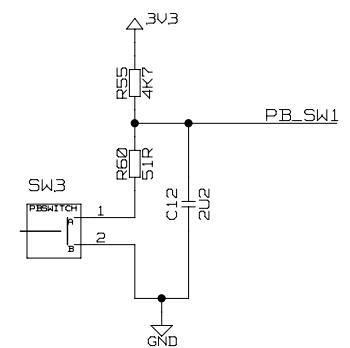
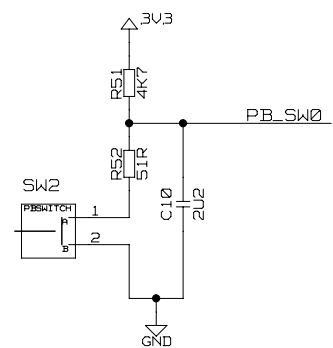
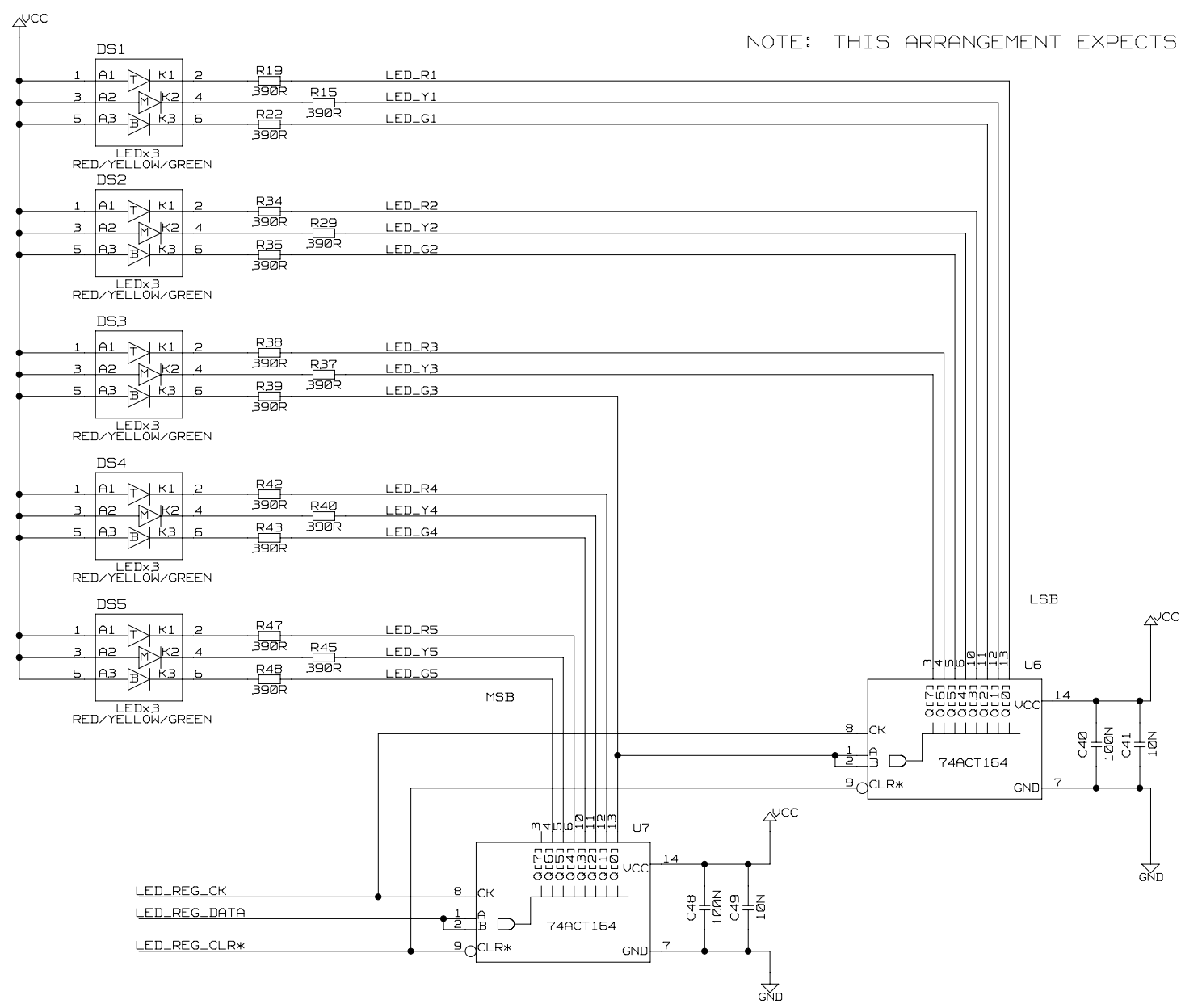
NIM / ECL CLK OUT SELECTION
SWITCHES SW19, SW20 SELECT
1+2 = ECL OUT
1+3 = NIM OUT



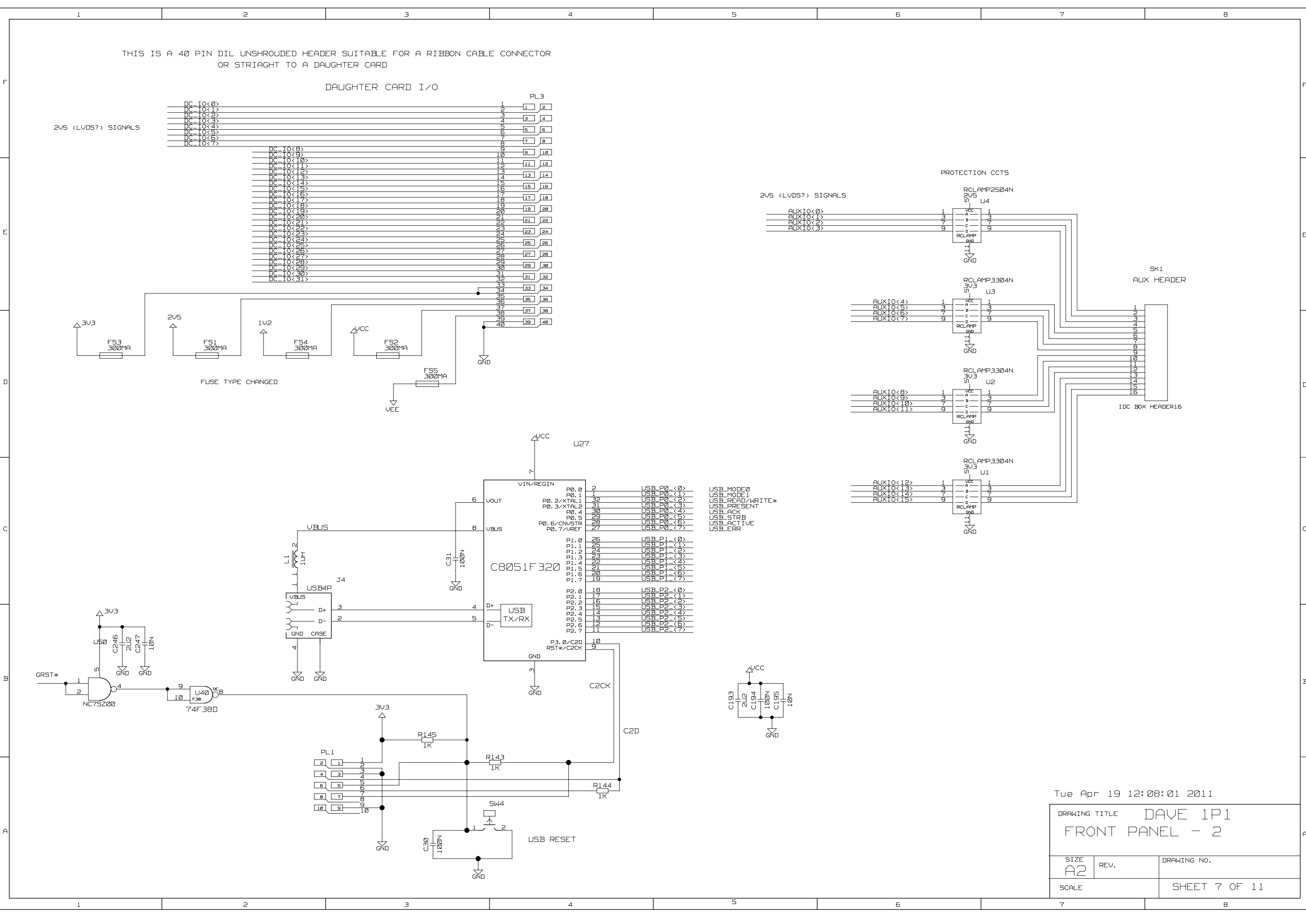
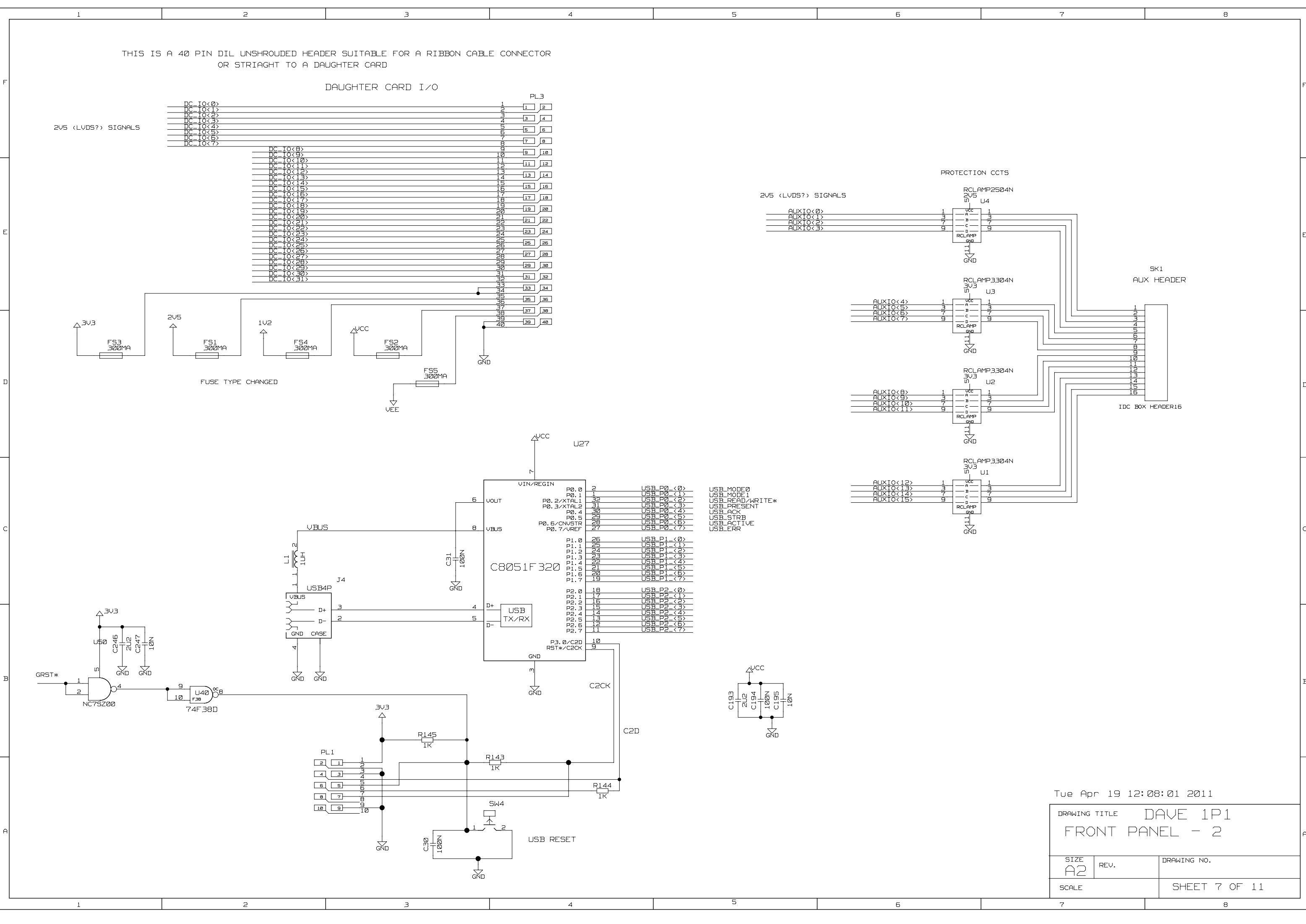
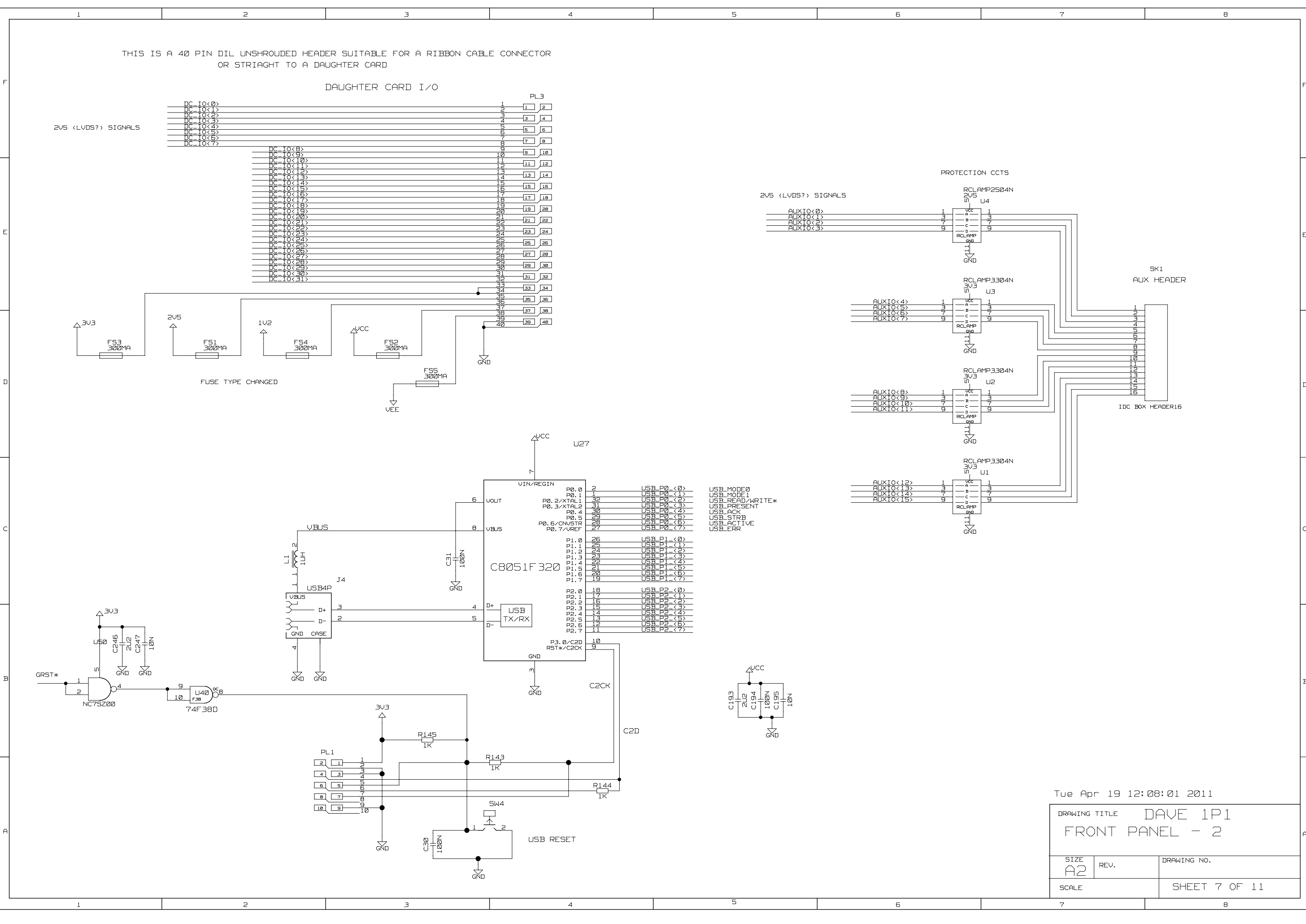
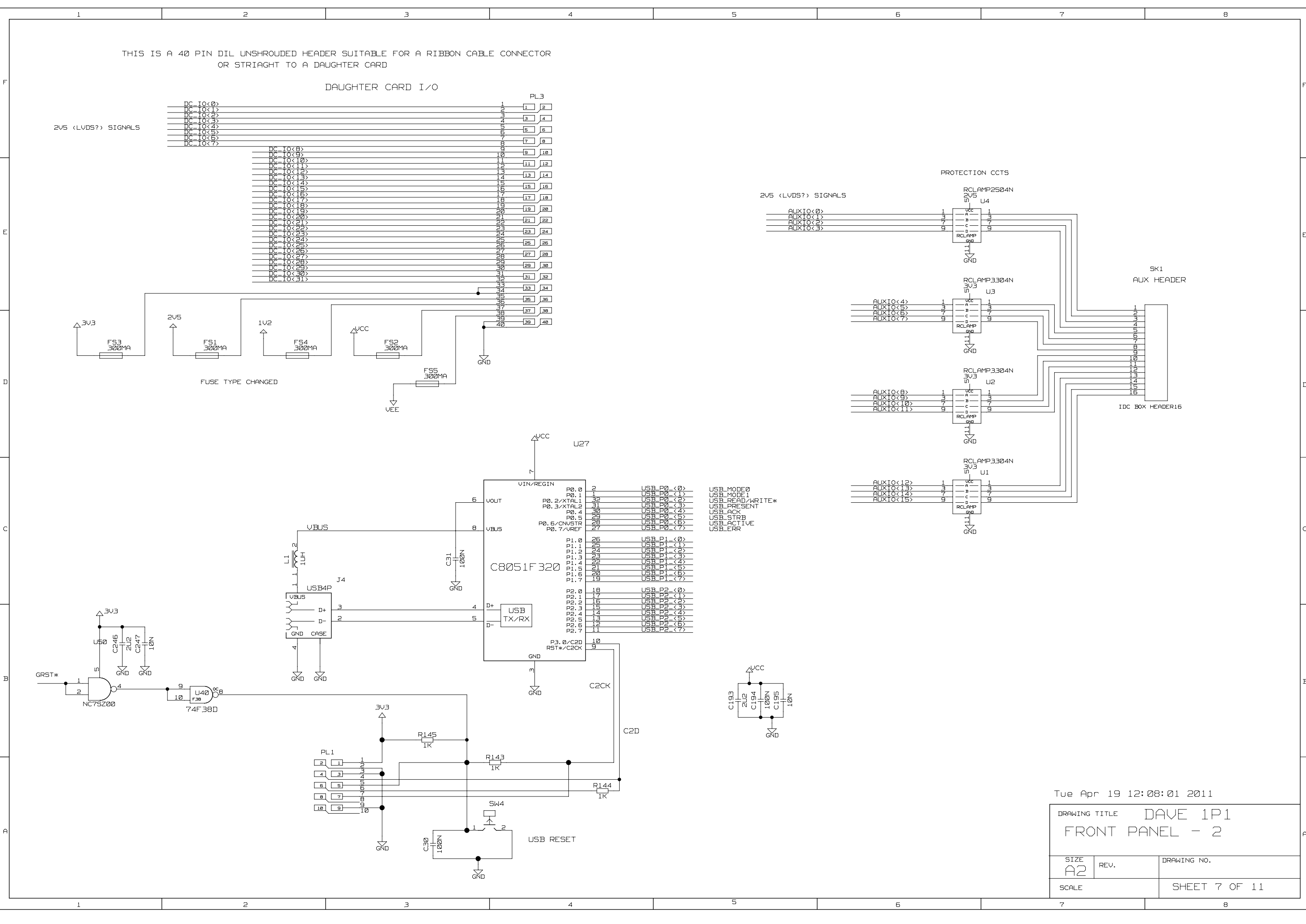
Tue Apr 19 12:08:00 2011

DRAWING TITLE			DAVE 1P1		
CLOCK IN & OUT					
SIZE	REV.	DRAWING NO.			
A2					
SCALE		SHEET 5 OF 11			

NOTE: THIS ARRANGEMENT EXPECTS LSB SHIFTED FIRST



Tue Apr 19 12:07:57 2011		
DRAWING TITLE		
DAVE 1P1		
FRONT PANEL - 1		
SIZE	REV.	DRAWING NO.
A2		
SCALE	SHEET 6 OF 11	

[illegible][illegible]

THIS IS A 40 PIN DIL UNSHROUDED HEADER SUITABLE FOR A RIBBON CABLE CONNECTOR OR STRIAIGHT TO A DAUGHTER CARD

DAUGHTER CARD I/O

PL3

DC_IO<0>
DC_IO<1>
DC_IO<2>
DC_IO<3>
DC_IO<4>
DC_IO<5>
DC_IO<6>
DC_IO<7>
DC_IO<8>
DC_IO<9>
DC_IO<10>
DC_IO<11>
DC_IO<12>
DC_IO<13>
DC_IO<14>
DC_IO<15>
DC_IO<16>
DC_IO<17>
DC_IO<18>
DC_IO<19>
DC_IO<20>
DC_IO<21>
DC_IO<22>
DC_IO<23>
DC_IO<24>
DC_IO<25>
DC_IO<26>
DC_IO<27>
DC_IO<28>
DC_IO<29>
DC_IO<30>
DC_IO<31>

2V5 <LVDS?> SIGNALS

FUSE TYPE CHANGED

FS3 300MA
FS1 300MA
FS4 300MA
FS2 300MA
FS5 300MA

VCC
VEE
GND

U27

C8051F320

VIN/REGIN
P0.0
P0.1
P0.2/X TAL1
P0.3/X TAL2
P0.4
P0.5
P0.6/CNVSTR
P0.7/VREF

P1.0
P1.1
P1.2
P1.3
P1.4
P1.5
P1.6
P1.7

P2.0
P2.1
P2.2
P2.3
P2.4
P2.5
P2.6
P2.7

P3.0/C2D
RST*/C2CK

USB TX/RX

D+
D-
CASE

J4

VBUS

L1 1UH

C31 100N

GRST*

NC7SZ00

U40 74F38D

R145 1K
R143 1K
R144 1K

SW4

C30 100N

USB RESET

PROTECTION CCTS

AUXIO<0>
AUXIO<1>
AUXIO<2>
AUXIO<3>
AUXIO<4>
AUXIO<5>
AUXIO<6>
AUXIO<7>
AUXIO<8>
AUXIO<9>
AUXIO<10>
AUXIO<11>
AUXIO<12>
AUXIO<13>
AUXIO<14>
AUXIO<15>

RCLAMP2504N U4
RCLAMP3304N U3
RCLAMP3304N U2
RCLAMP3304N U1

SK1 AUX HEADER

IDC BOX HEADER16

Tue Apr 19 12:08:01 2011

DRAWING TITLE		DAVE 1P1
FRONT PANEL - 2		
SIZE	REV.	DRAWING NO.
A2		
SCALE		SHEET 7 OF 11

THIS IS A 40 PIN DIL UNSHROUDED HEADER SUITABLE FOR A RIBBON CABLE CONNECTOR OR STRIAIGHT TO A DAUGHTER CARD

DAUGHTER CARD I/O

PL3

DC_IO<0>
DC_IO<1>
DC_IO<2>
DC_IO<3>
DC_IO<4>
DC_IO<5>
DC_IO<6>
DC_IO<7>
DC_IO<8>
DC_IO<9>
DC_IO<10>
DC_IO<11>
DC_IO<12>
DC_IO<13>
DC_IO<14>
DC_IO<15>
DC_IO<16>
DC_IO<17>
DC_IO<18>
DC_IO<19>
DC_IO<20>
DC_IO<21>
DC_IO<22>
DC_IO<23>
DC_IO<24>
DC_IO<25>
DC_IO<26>
DC_IO<27>
DC_IO<28>
DC_IO<29>
DC_IO<30>
DC_IO<31>

2V5 <LVDS?> SIGNALS

FUSE TYPE CHANGED

FS3 300MA
FS1 300MA
FS4 300MA
FS2 300MA
FS5 300MA

VCC
VEE
GND

U27

C8051F320

VIN/REGIN
P0.0
P0.1
P0.2/XTAL1
P0.3/XTAL2
P0.4
P0.5
P0.6/CNVSTR
P0.7/VREF

P1.0
P1.1
P1.2
P1.3
P1.4
P1.5
P1.6
P1.7

P2.0
P2.1
P2.2
P2.3
P2.4
P2.5
P2.6
P2.7

P3.0/C2D
RST*/C2CK

USB TX/RX

D+
D-
CASE

J4

VBUS

L1 1UH

C31 100N

GRST*

NC7SZ00

U40 74F38D

R145 1K
R143 1K
R144 1K

SW4

C30 100N

USB RESET

PROTECTION CCTS

AUXIO<0>
AUXIO<1>
AUXIO<2>
AUXIO<3>
AUXIO<4>
AUXIO<5>
AUXIO<6>
AUXIO<7>
AUXIO<8>
AUXIO<9>
AUXIO<10>
AUXIO<11>
AUXIO<12>
AUXIO<13>
AUXIO<14>
AUXIO<15>

RCLAMP2504N U4
RCLAMP3304N U3
RCLAMP3304N U2
RCLAMP3304N U1

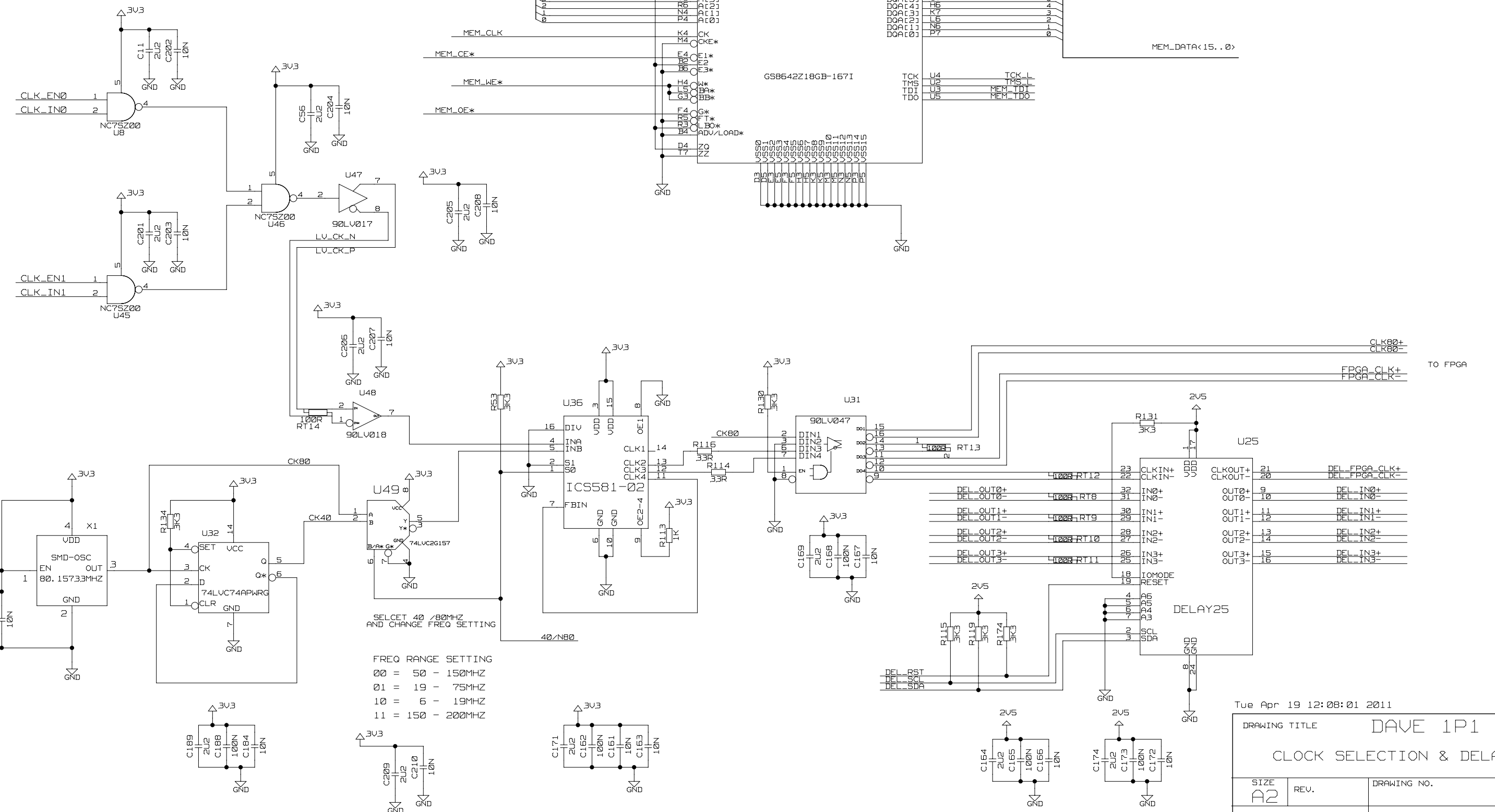
SK1 AUX HEADER

IDC BOX HEADER16

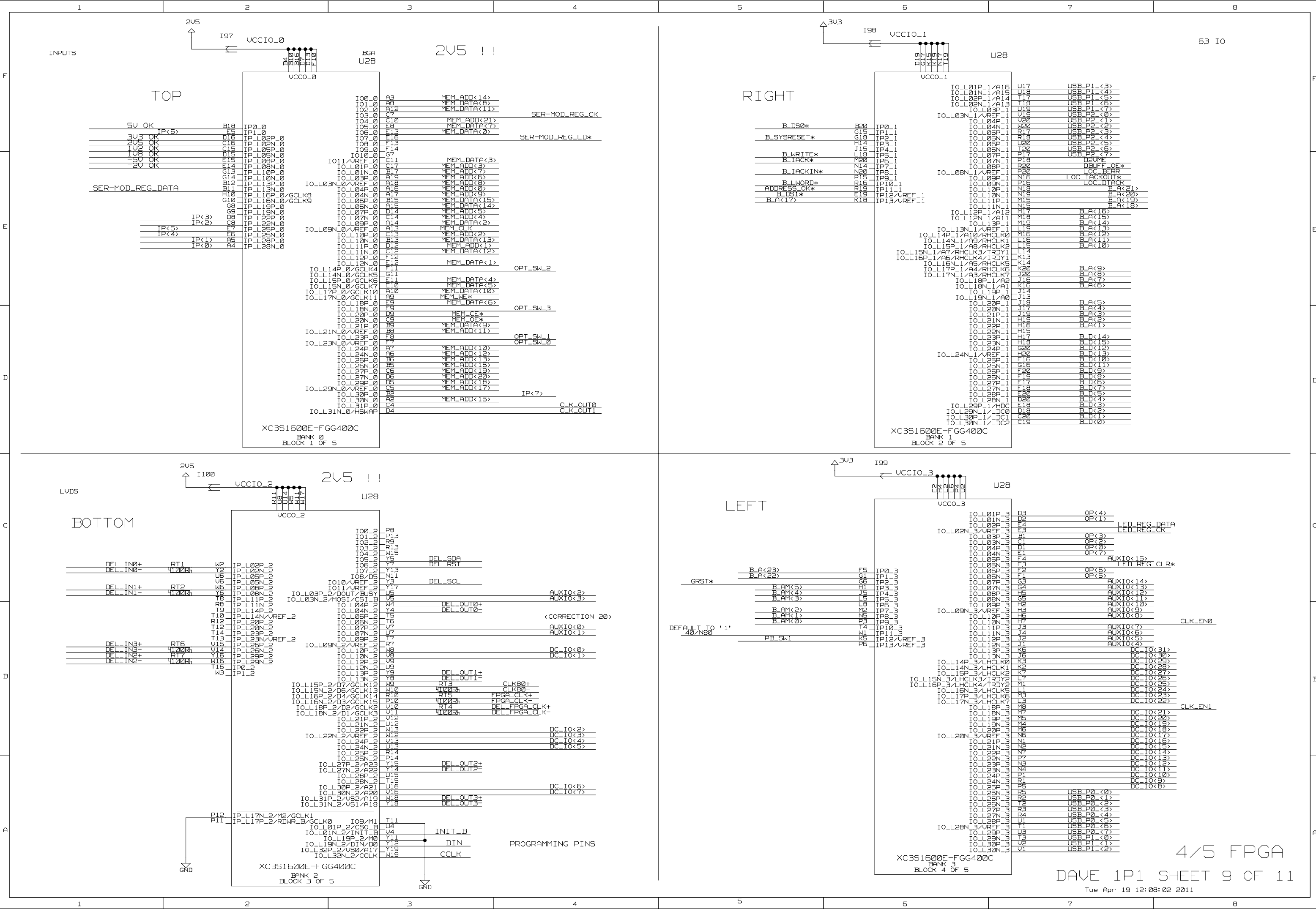
Tue Apr 19 12:08:01 2011

DRAWING TITLE		DAVE 1P1
		FRONT PANEL - 2
SIZE	REV.	DRAWING NO.
A2		
SCALE		SHEET 7 OF 11

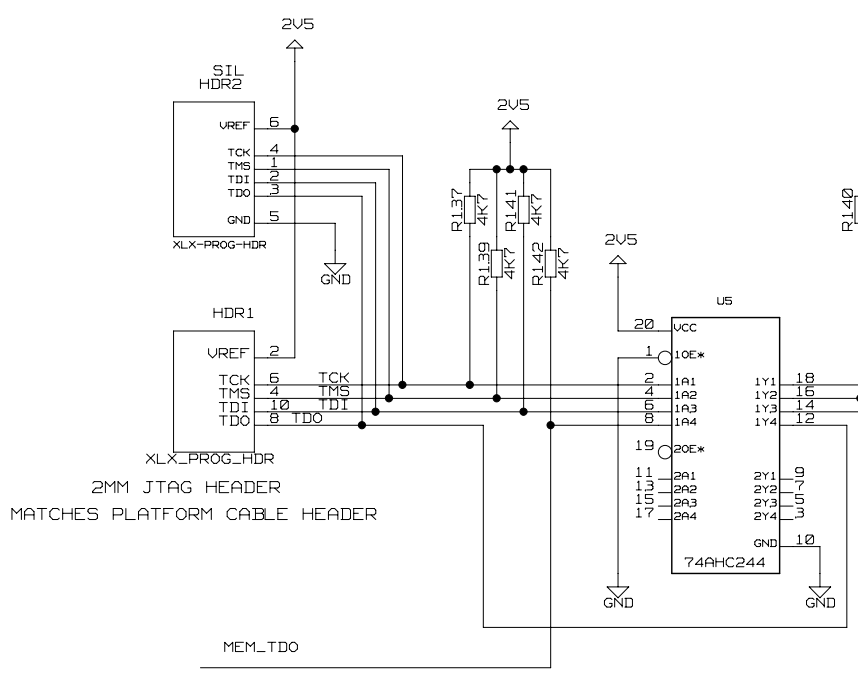
[illegible][illegible]



DRAWING TITLE		DAVE 1P1
CLOCK SELECTION & DELAYS		
SIZE A2	REV.	DRAWING NO.
SCALE		SHEET 8 OF 11

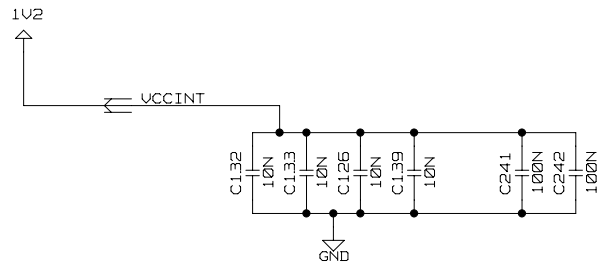
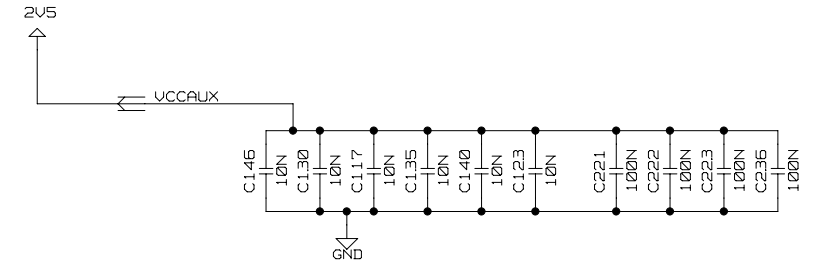
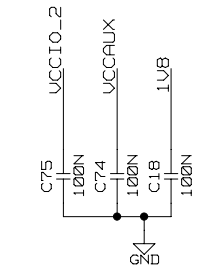
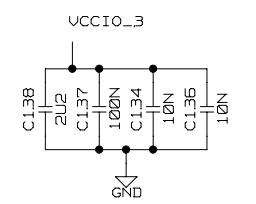
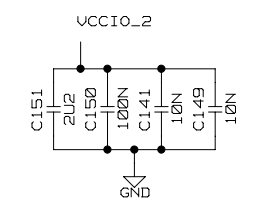
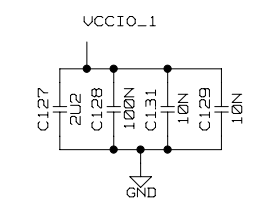
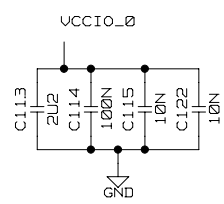
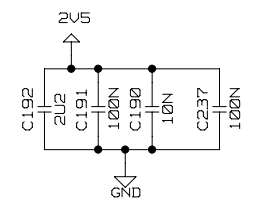
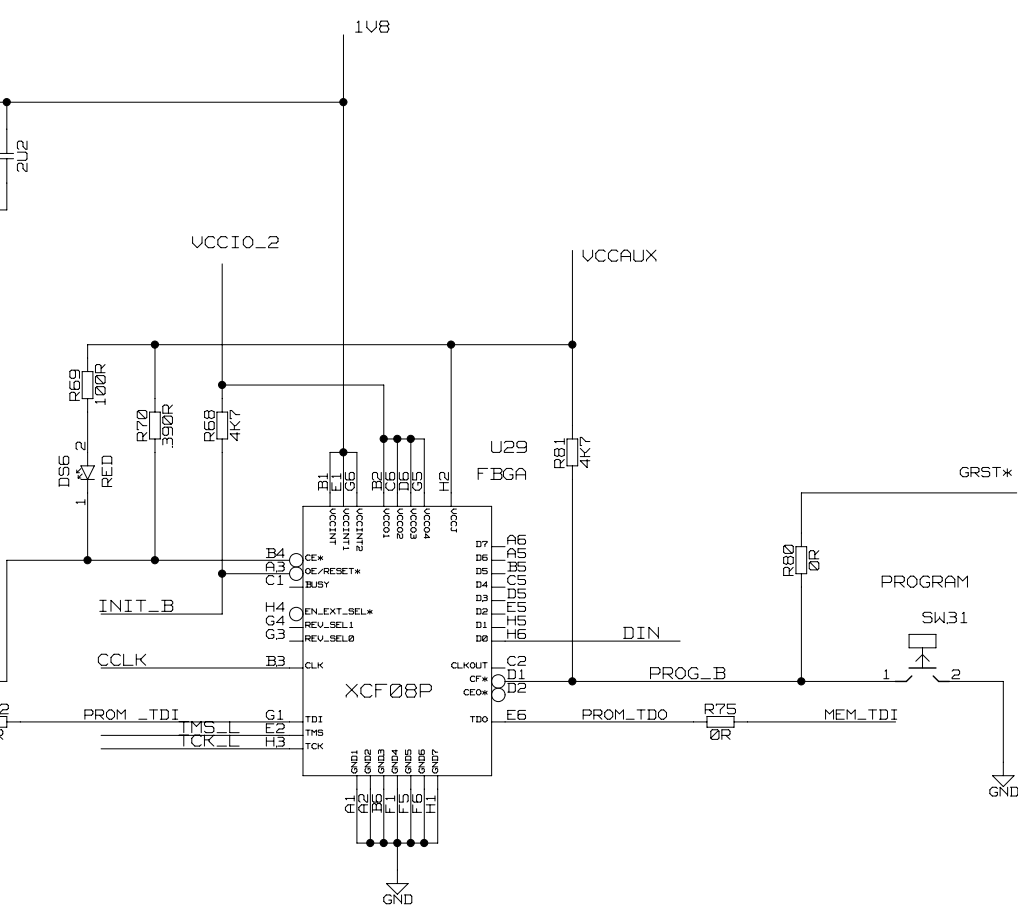
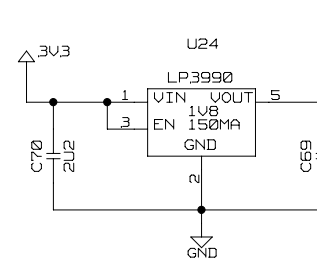
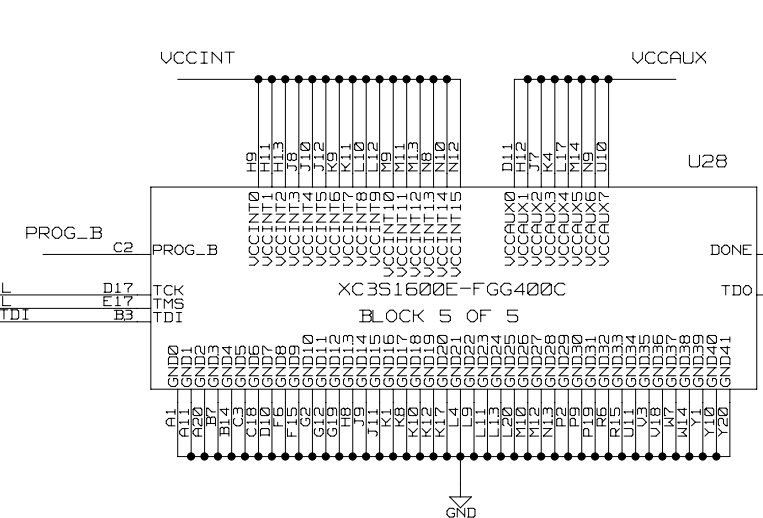


2.54MM 6 PIN JTAG HEADER



2MM JTAG HEADER
MATCHES PLATFORM CABLE HEADER

MEM_TDO



Tue Apr 19 12:07:59 2011

DRAWING TITLE		
DAVE 1P1		
FPGA POWER & PROG		
SIZE	REV.	DRAWING NO.
A2		
SCALE	SHEET 10 OF 11	

