

Tous droits strictement réservés. Reproduction ou communication à des tiers interdite sous quelque forme que ce soit sans autorisation écrite du propriétaire. Property of FCI. All rights reserved.

FCI

All rights strictly reserved. Reproduction or issue to third parties in any form whatsoever is not permitted without written authority from the proprietor. Property of FCI. Copyright 2004

PRODUCT NUMBER DESCRIPTION:  
98414 - X XX - XX - XXX

PLATING  
S = 0.38µm GOLD  
ON CONTACT AREA  
3.81µm TIN/LEAD  
ON TAIL  
G = 0.76µm GOLD  
ON CONTACT AREA  
3.81µm TIN/LEAD  
ON TAIL  
F = GOLD FLASH  
ON CONTACT AREA  
3.81µm TIN/LEAD  
ON TAIL

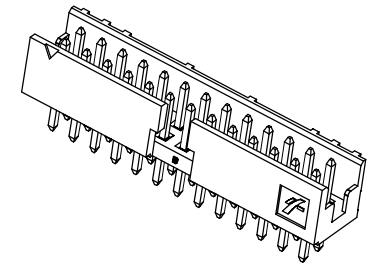
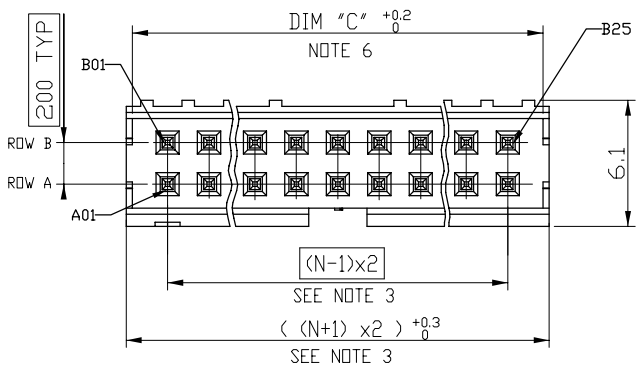
POLARISATION (SEE NOTE 7)  
PACKAGING:  
(SEE NOTE 5) = POLY BAGS  
U = TUBE

TOTAL NUMBER OF POSITIONS  
(04 to 50)

PIN STYLE	POST LENGTH	TAIL LENGTH
06	4.00	2.50
08	4.00	3.10

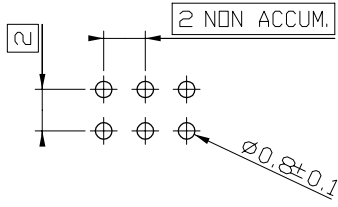
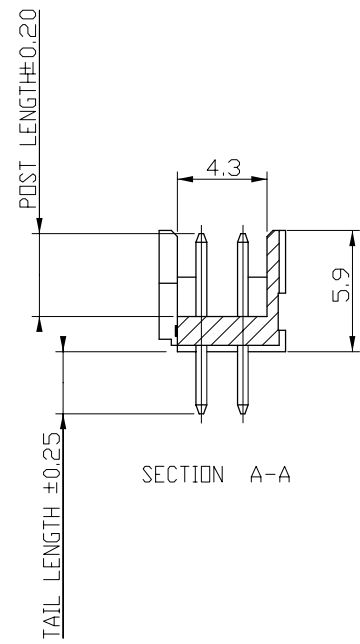
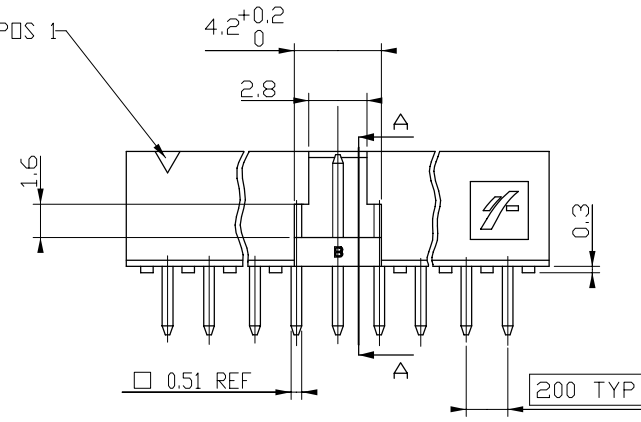
NOTES:

1. MATERIAL HOUSING: HIGH TEMP. THERMOPLASTIC  
UL 94V-0, COLOR CREAM
2. MATERIAL TERMINAL: COPPER ALLOY
3. TO DETERMINE DIMENSIONS:  
N = NUMBER OF POSITIONS PER ROW
4. 7N MIN. PIN RETENTION IN EITHER DIRECTION.
5. PACKAGING:  
- STANDARD PACKAGING: IN PLASTIC BOX  
- SPECIAL PACKAGING:  
PACKING TUBE AVAILABLE FROM 06 TO 50 POS
6. DIM "C" = (N x 2) + 1.4  
EXAMPLE: N = 7  
DIM "C" = (7 x 2) + 1.4 = 15.4 mm
7. FOR POLARISATION, SPECIFIED PIN  
EXAMPLE : A03 = ROW A, POSITION 03 TO OMIT PIN  
OMIT FROM PRODUCT NUMBER IF THIS FEATURE IS NOT APPLICABLE

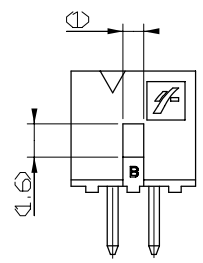


SCALE 5:2

INDICATES POS 1



RECOMMENDED HOLE PATTERN



4 POSITIONS PRODUCT DESIGN

ltr	ecn no	dr	date
A	F10338	LMU	03.10.01
B	F10591	LMU	01.11.14
C	F10597	LMU	01.11.20
D	F20309	LMU	02.05.02
E	F03-0231	DLE	03-06-30
F	F03-0420	LMU	04.01.20
G	F04-0186	LMU	04.05.10

<div><div><div>A</div><div>FCI</div></div><div>www.fciconnect.com</div></div>			surface <div><div>✓</div></div> ISO 1302		tolerance ISO 406 ISO 1101	projection <div><div><div><div></div><div></div></div><div></div></div></div>	<div>mm</div> <div><div></div><div></div></div>
Dr	L.MULIN	01.06.13	Product family			size	Scale
Eng	J.COMPAGNON	01.06.13	Spec ref			A3	4:1
Chr			Material		SEE NOTES	ECN	
Appr	JM.C	01.06.13					
title	2.00 mm SHROUDED HEADER				dwg no	98414	Rev.
	VERTICAL TMT						G
catalog no				-	CUSTOMER COPY		sheet 1 of 1