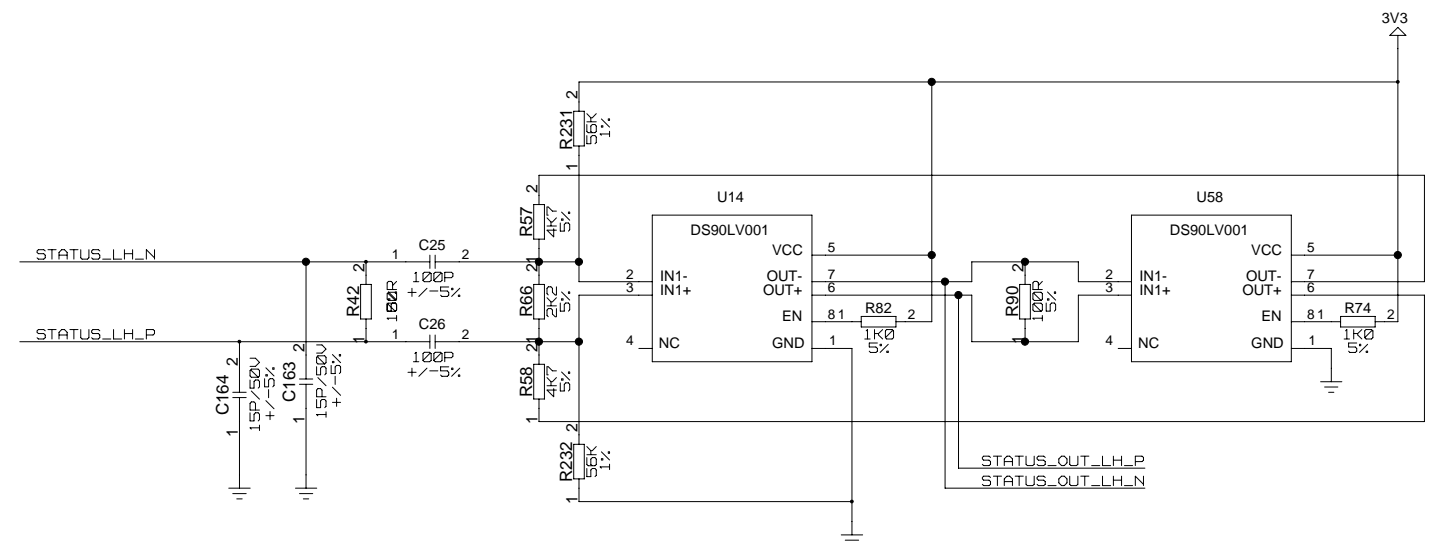
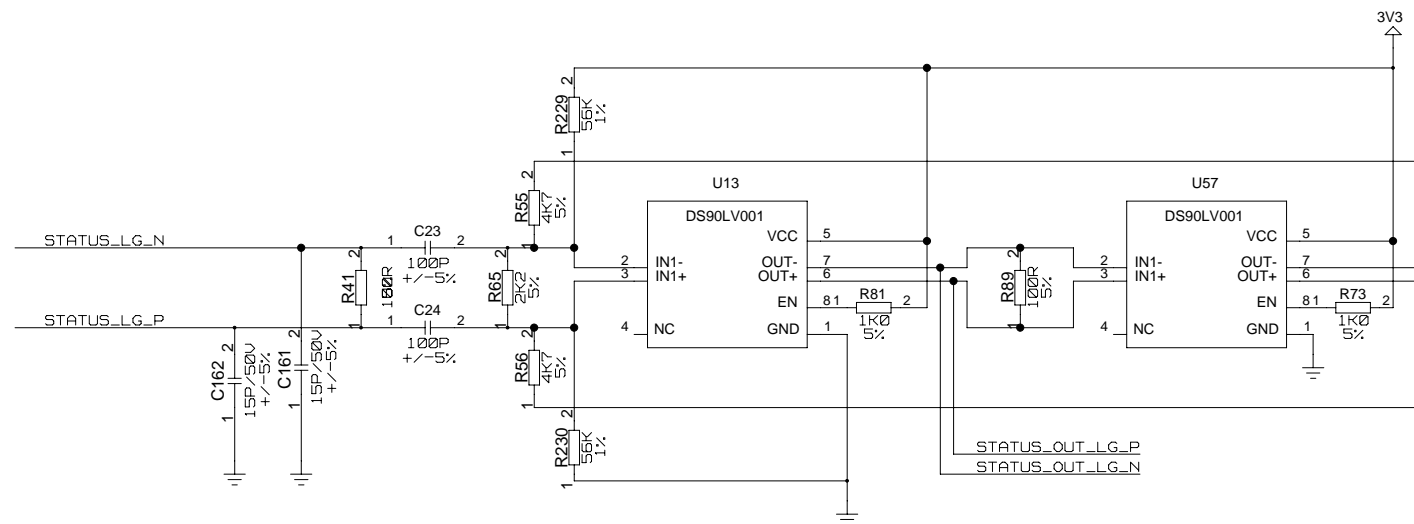
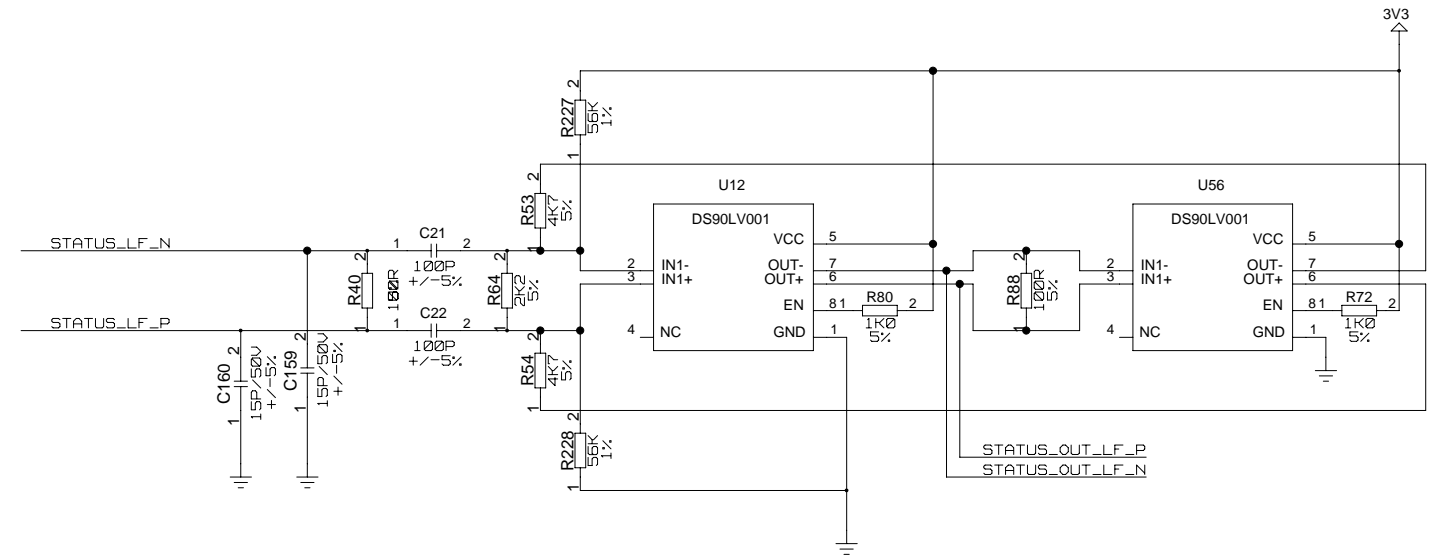
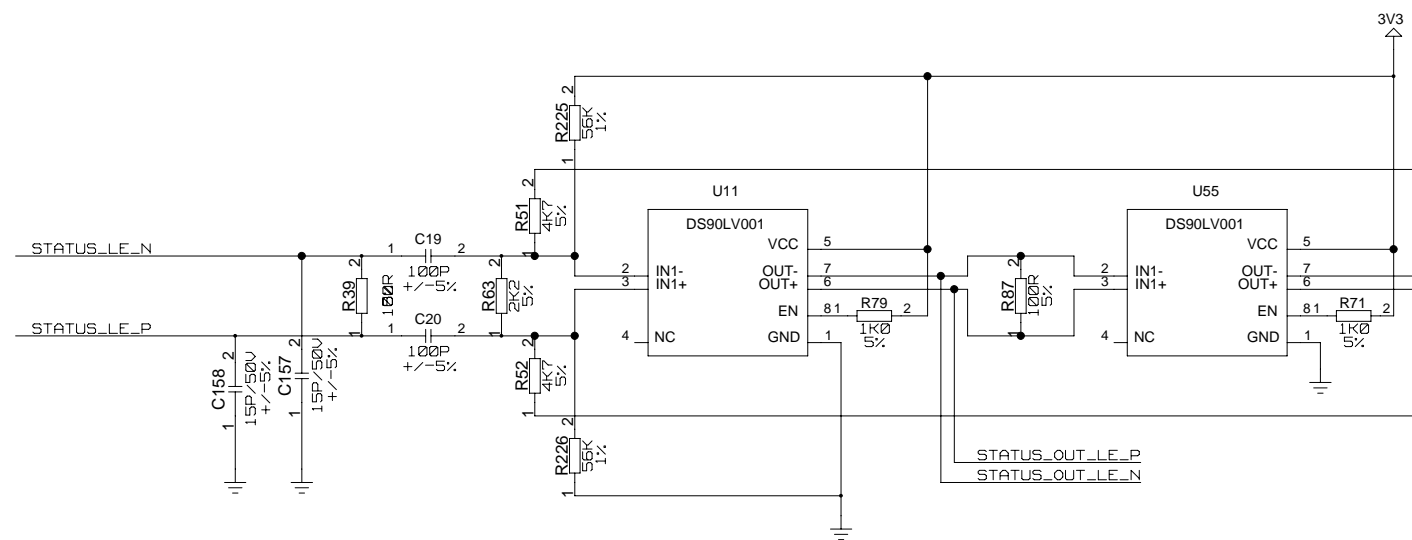



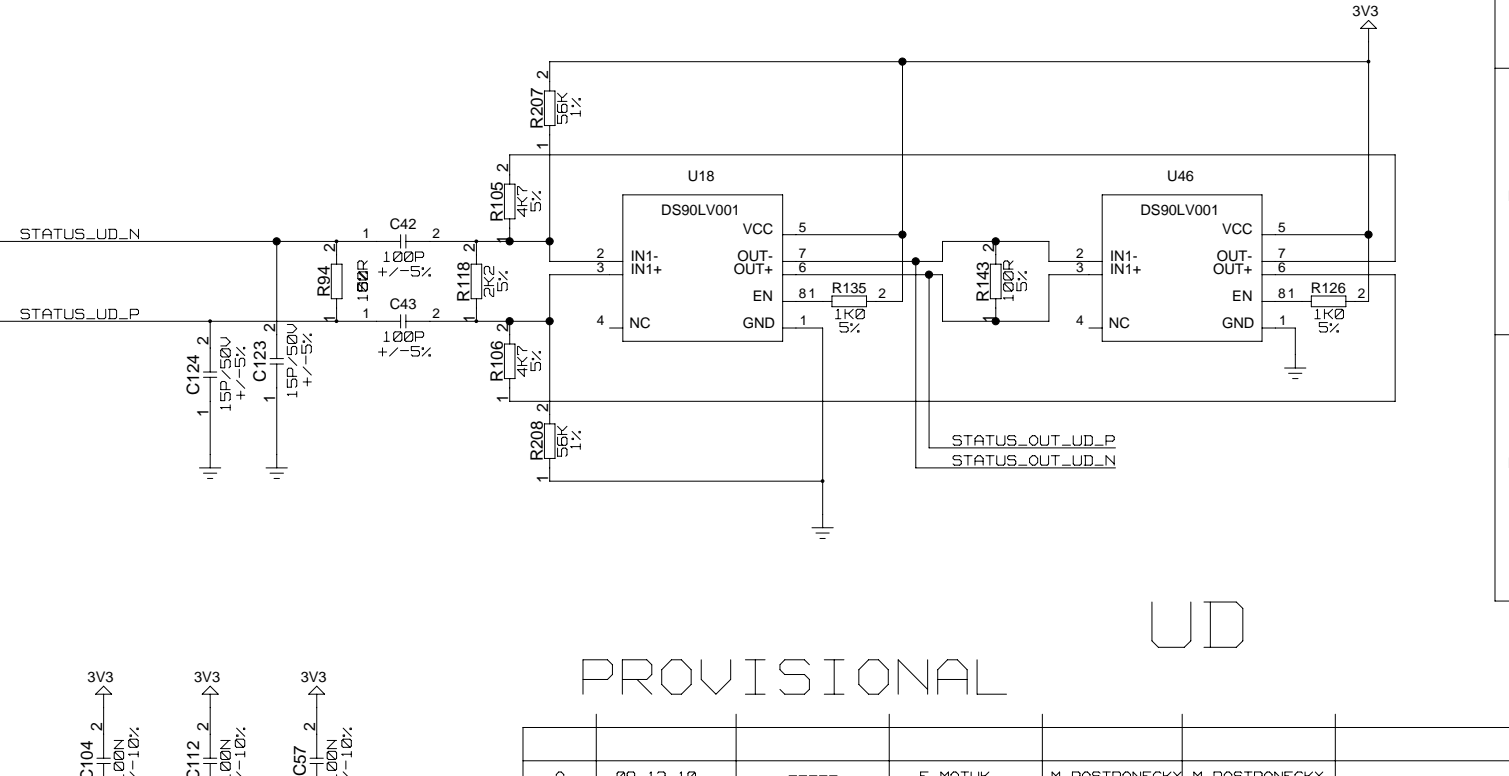
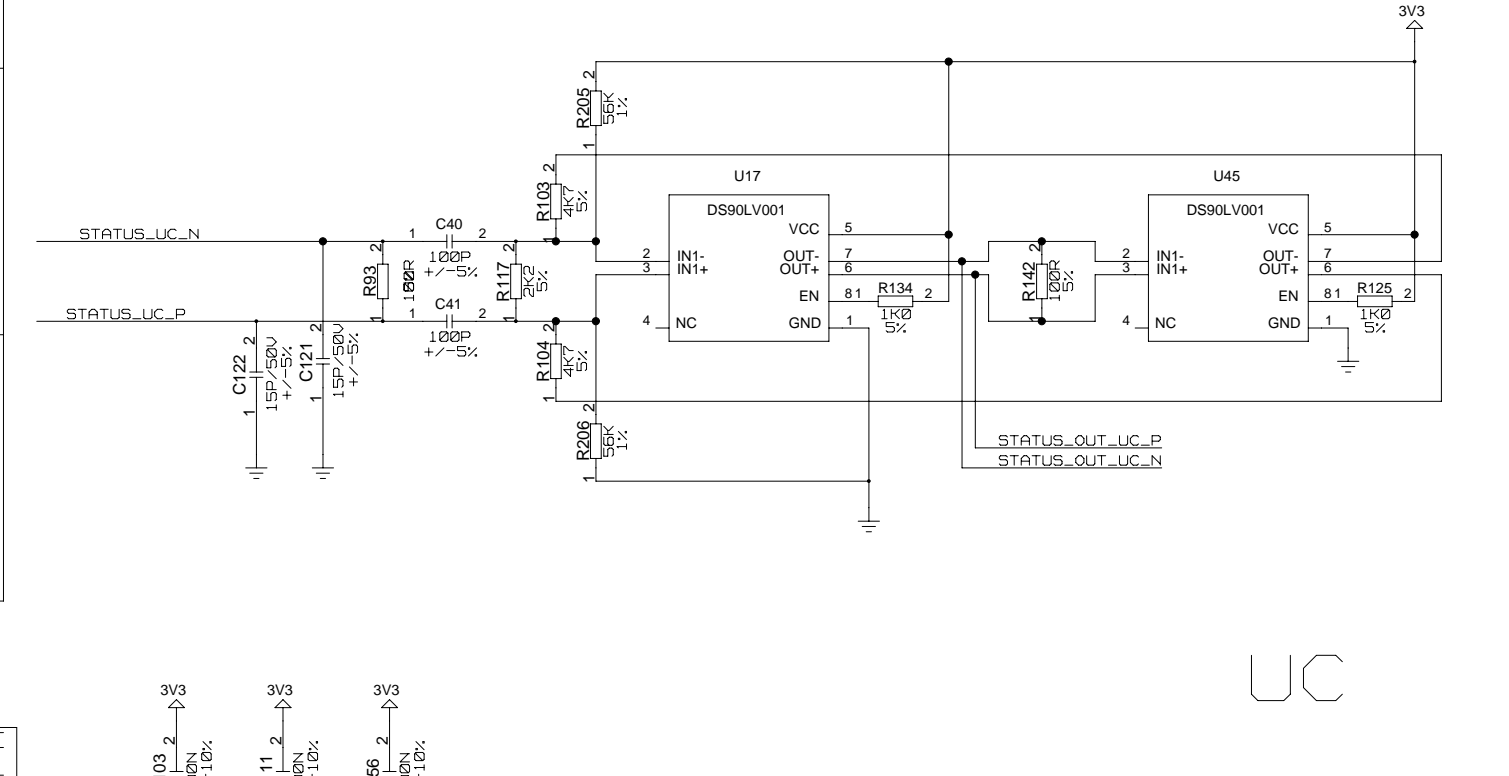
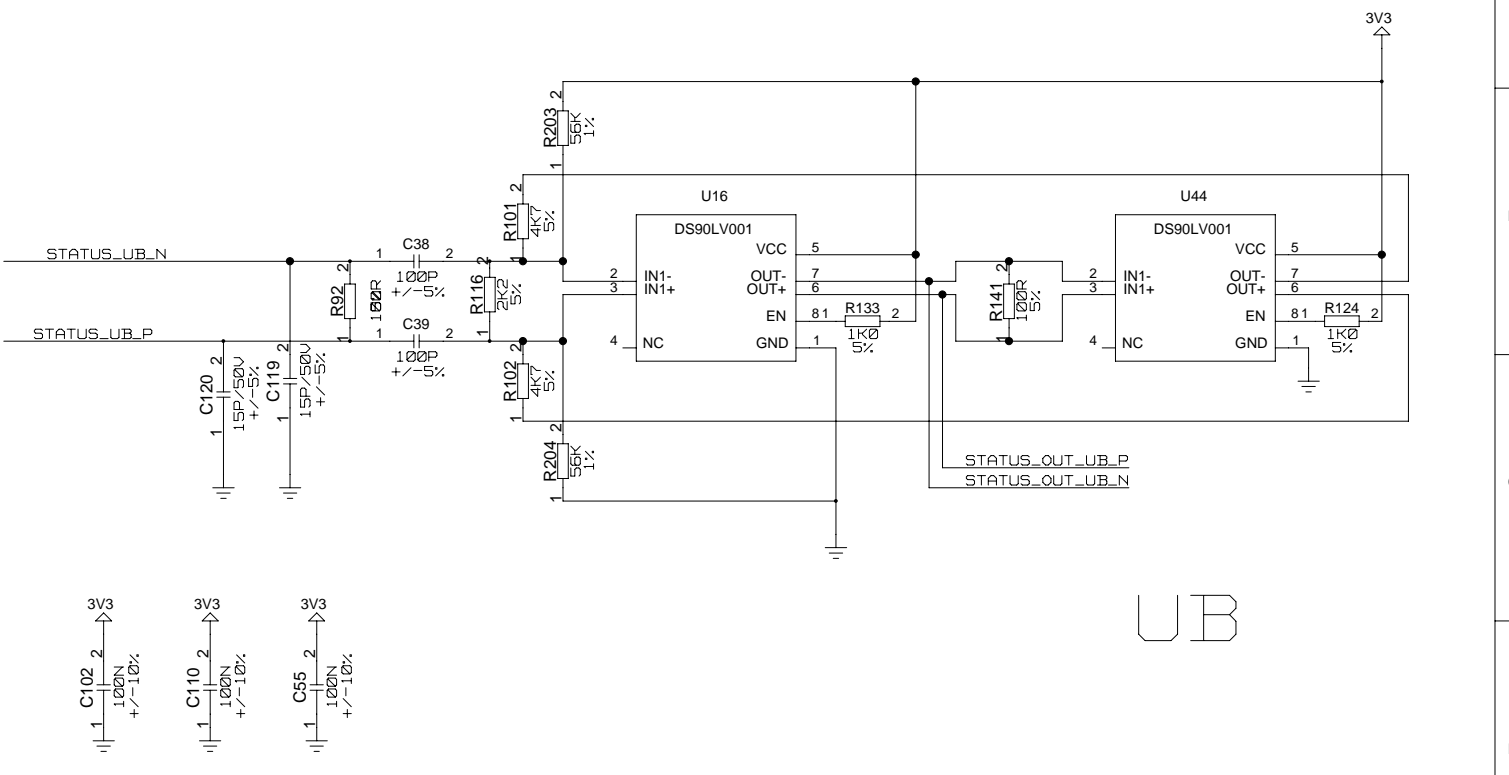
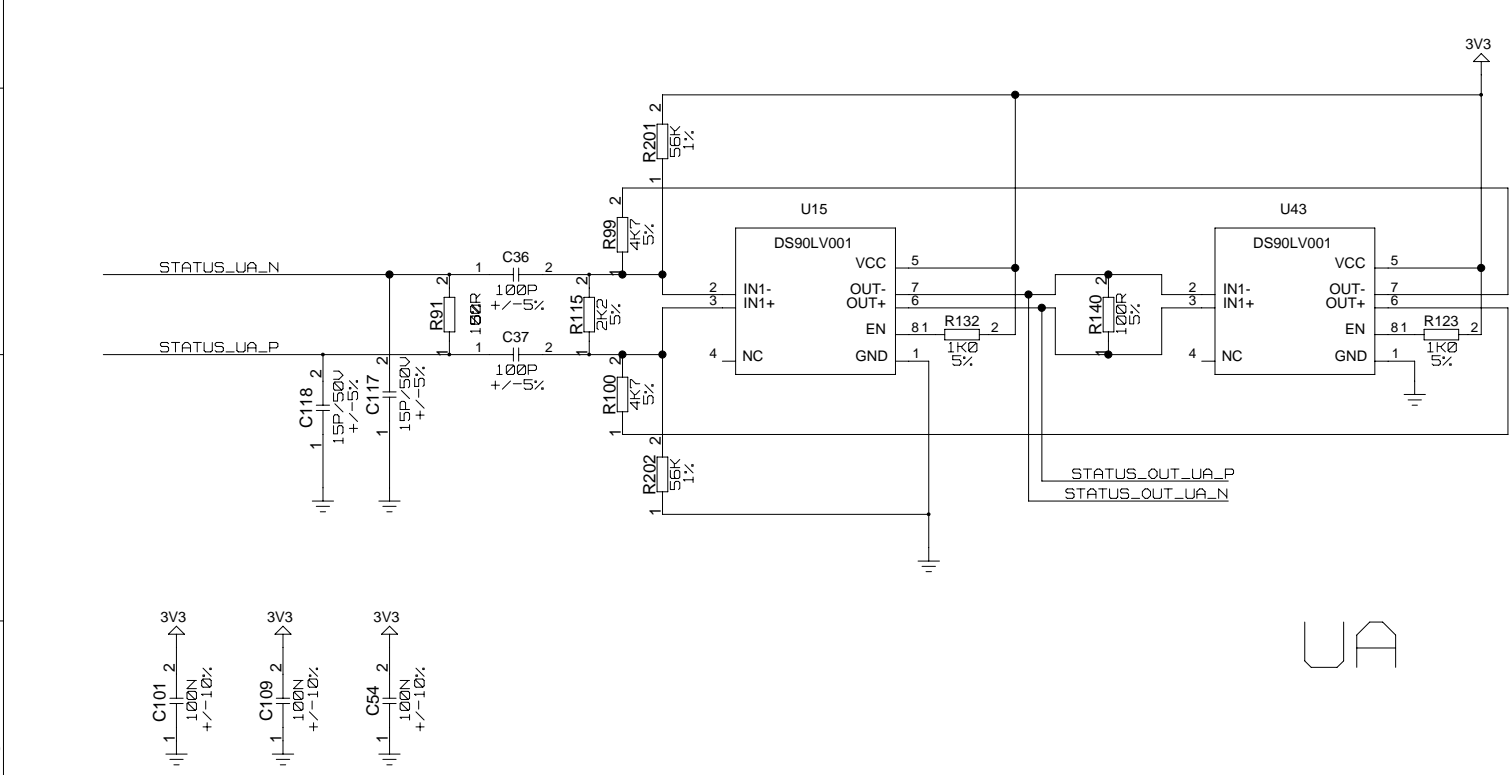
PROVISIONAL



PROVISIONAL

A	09. 12. 10	-----	E. MOTUK	M. POSTRANECKY	M. POSTRANECKY	
ISSUE	DATE	MOD NO.	DRN BY.	CHKD.	APPD.	STATUS
USED ON					XFEL	© STFC 2011

		SCIENCE & TECHNOLOGY FACILITIES COUNCIL	
RUTHERFORD APPLETON LABORATORY		CHILTON, DIDCOT, OXON OX11 0QX	
TITLE	PC3462M		CIRCUIT
	XFEL CC PRE-PROTOTYPE-B		
	STATUS A/C BUFFERED L/E-H		
<u>DATE STAMP</u>			
Thu Jun 16 13:31:32 2011		21/10	

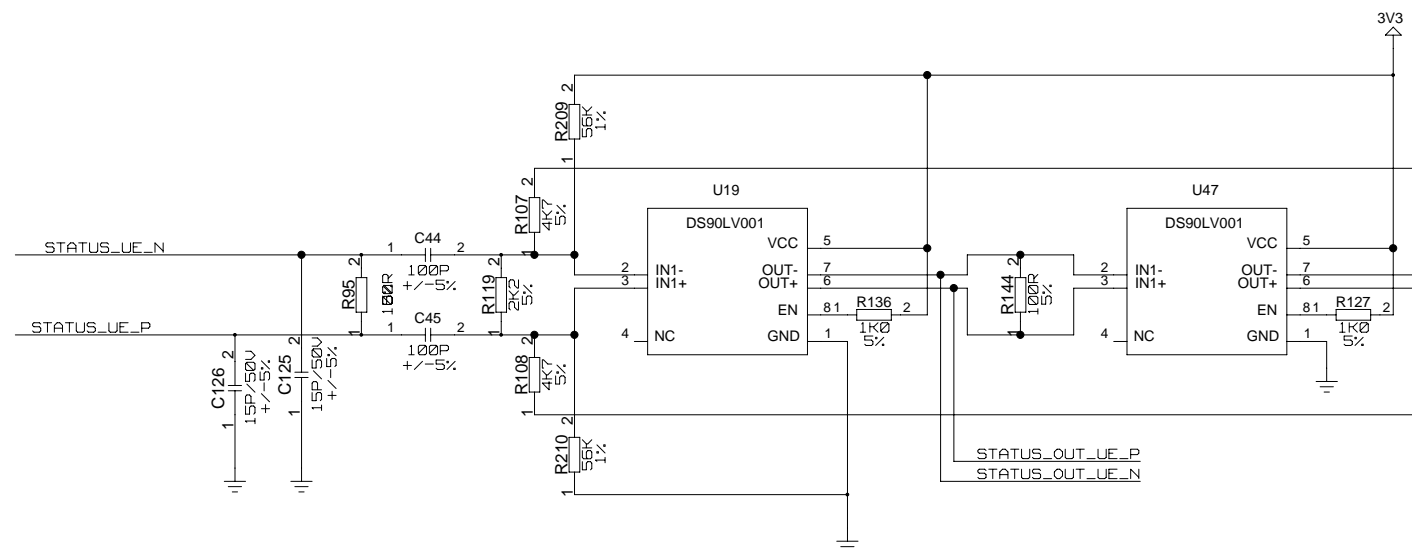


PROVISIONAL

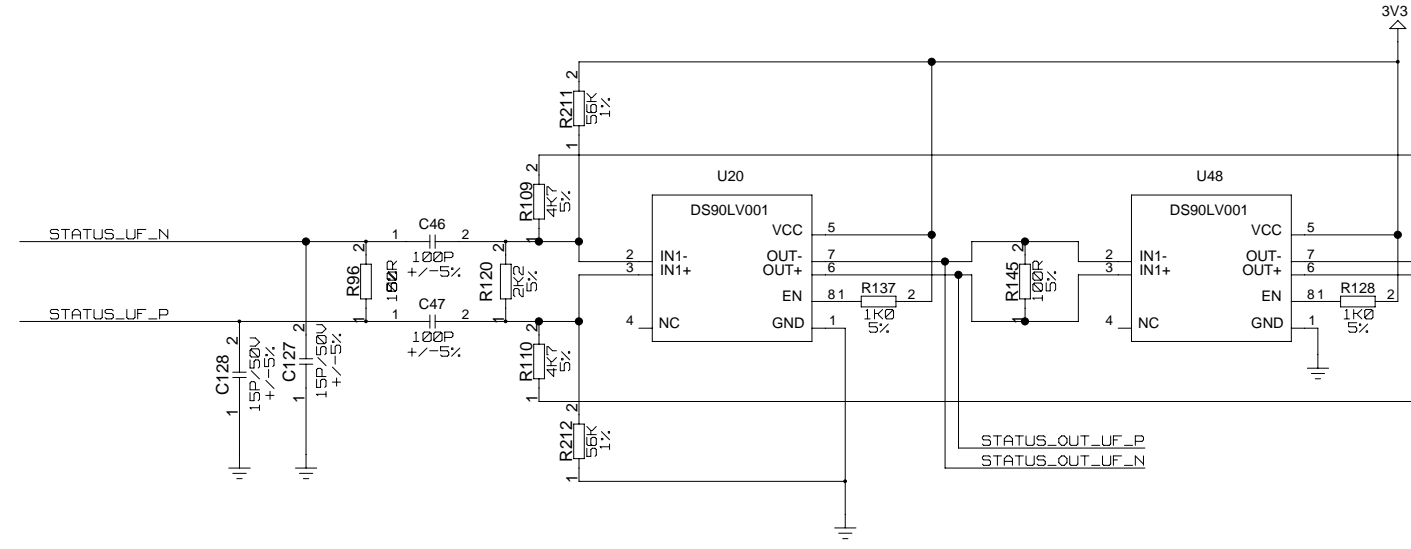
A	09. 12. 10	----	E. MOTUK	M. POSTRANECKY	M. POSTRANECKY	
ISSUE	DATE	MOD NO.	DRN BY.	CHKD.	APPD.	STATUS
USED ON					XFEL	
SCIENCE & TECHNOLOGY FACILITIES COUNCIL					RUTHERFORD APPLETON LABORATORY CHILTON, DIDCOT, OXON OX11 0QX	
TITLE			PC3462M CIRCUIT			
			XFEL CC PRE-PROTOTYPE-B			
DATE STAMP			STATUS A/C BUFFERED U/A-D			
Thu Jun 16 13:31:36 2011			21/10			

A2-TE-0156-001-04-A

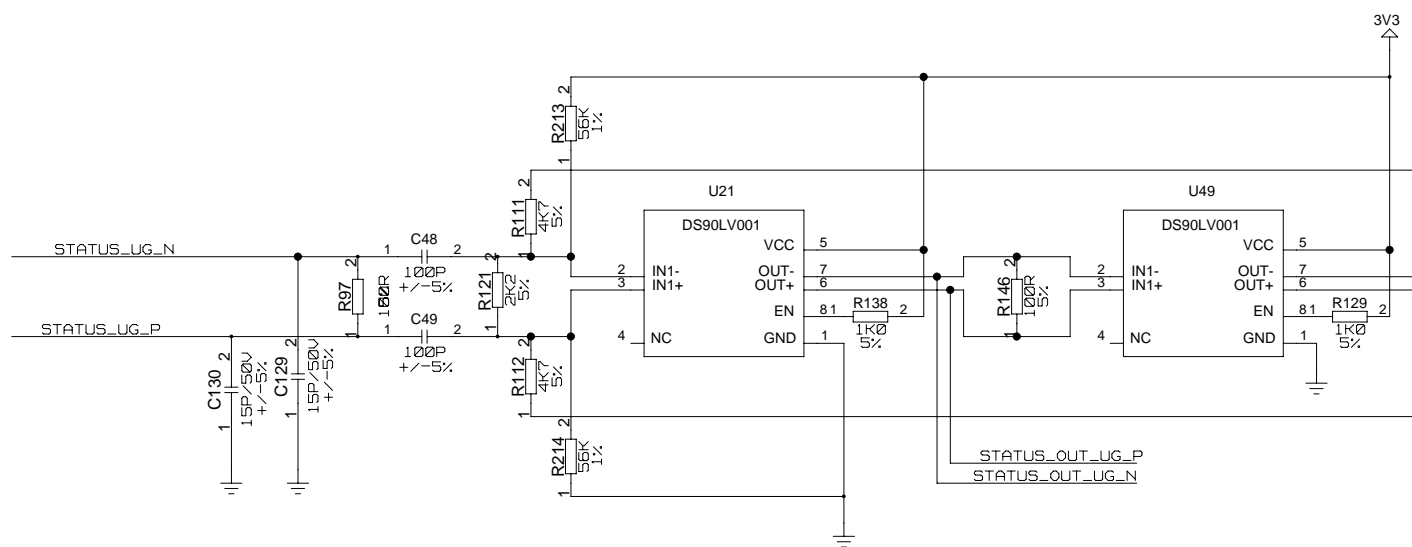
TOTAL NO. OF SHEETS8



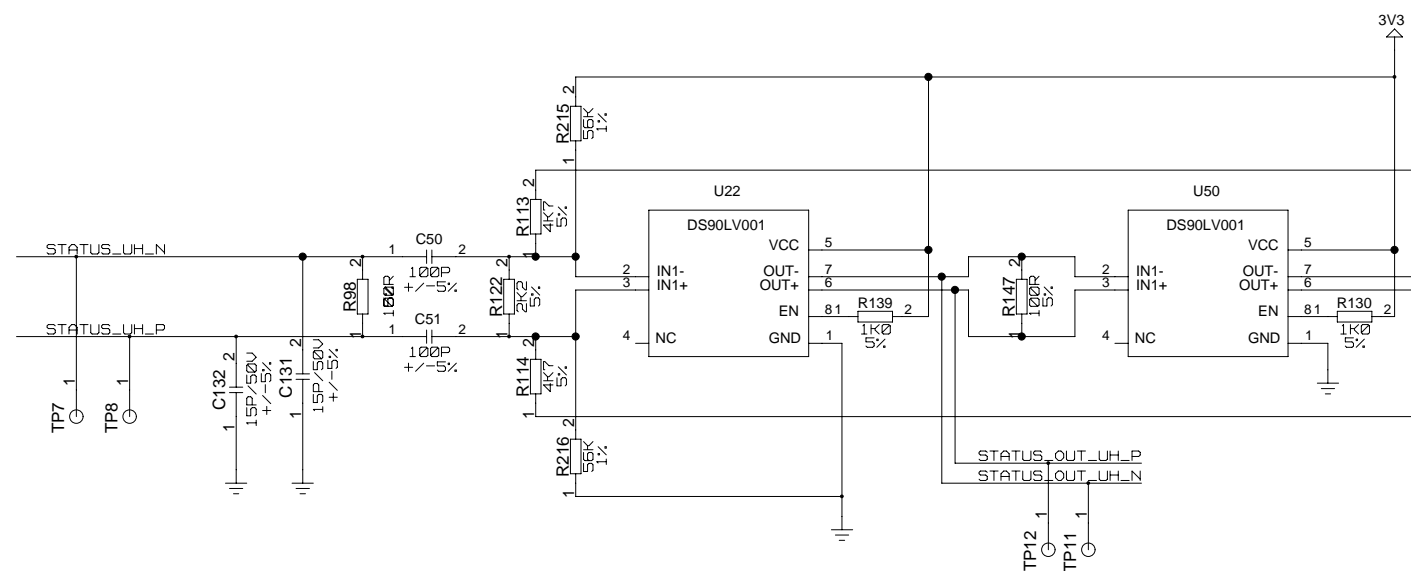
UE



LIF




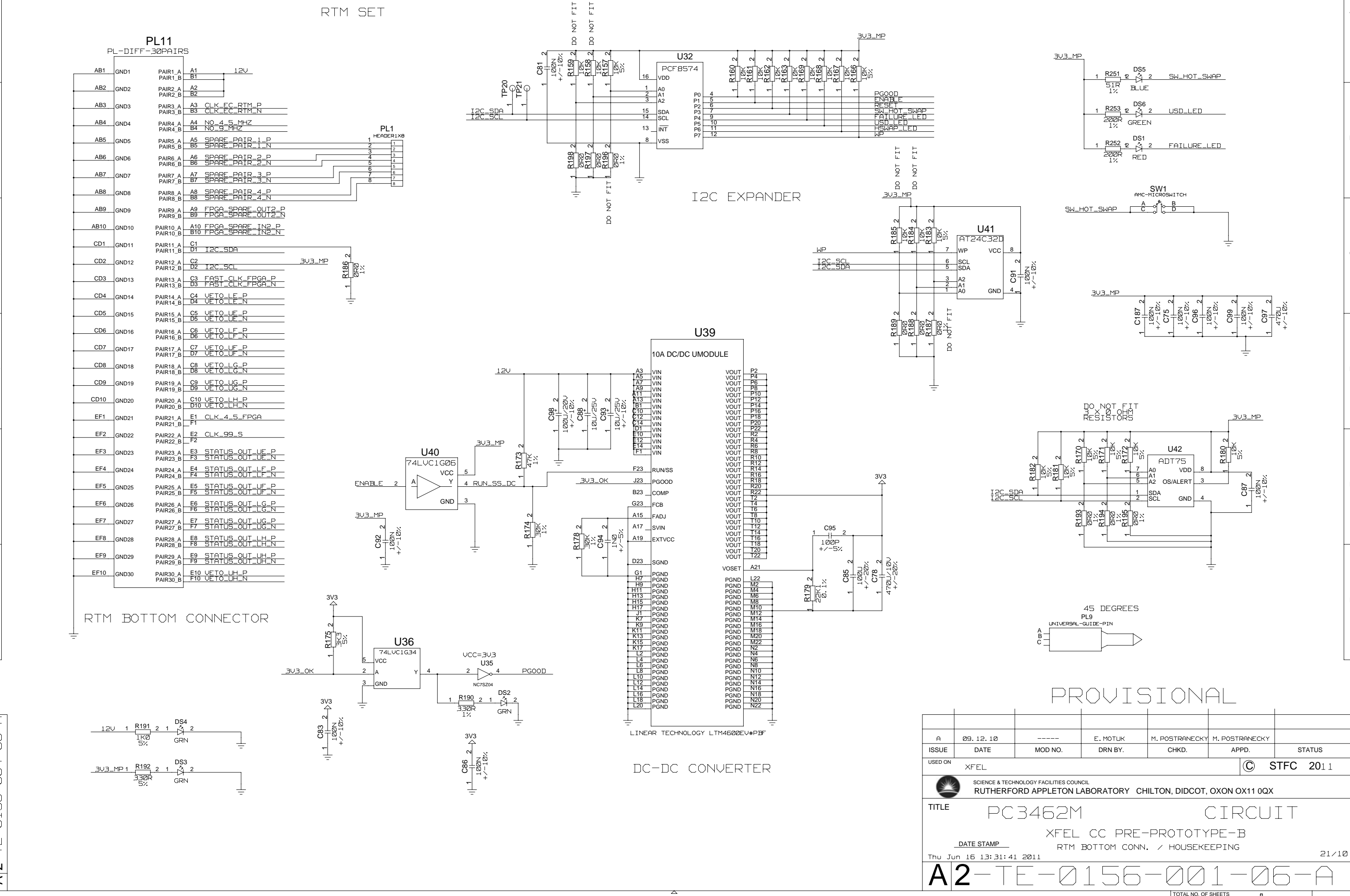
UG

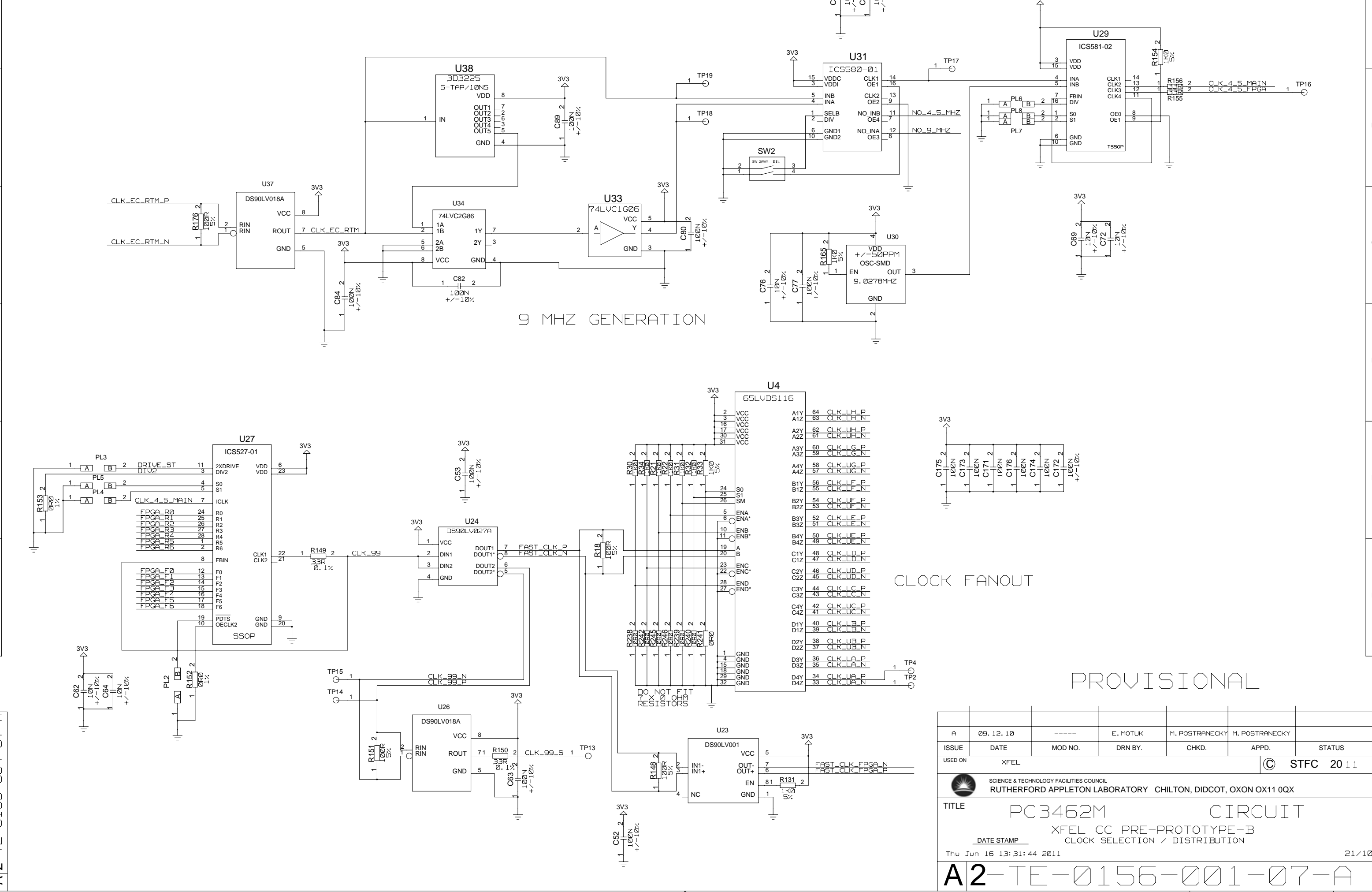


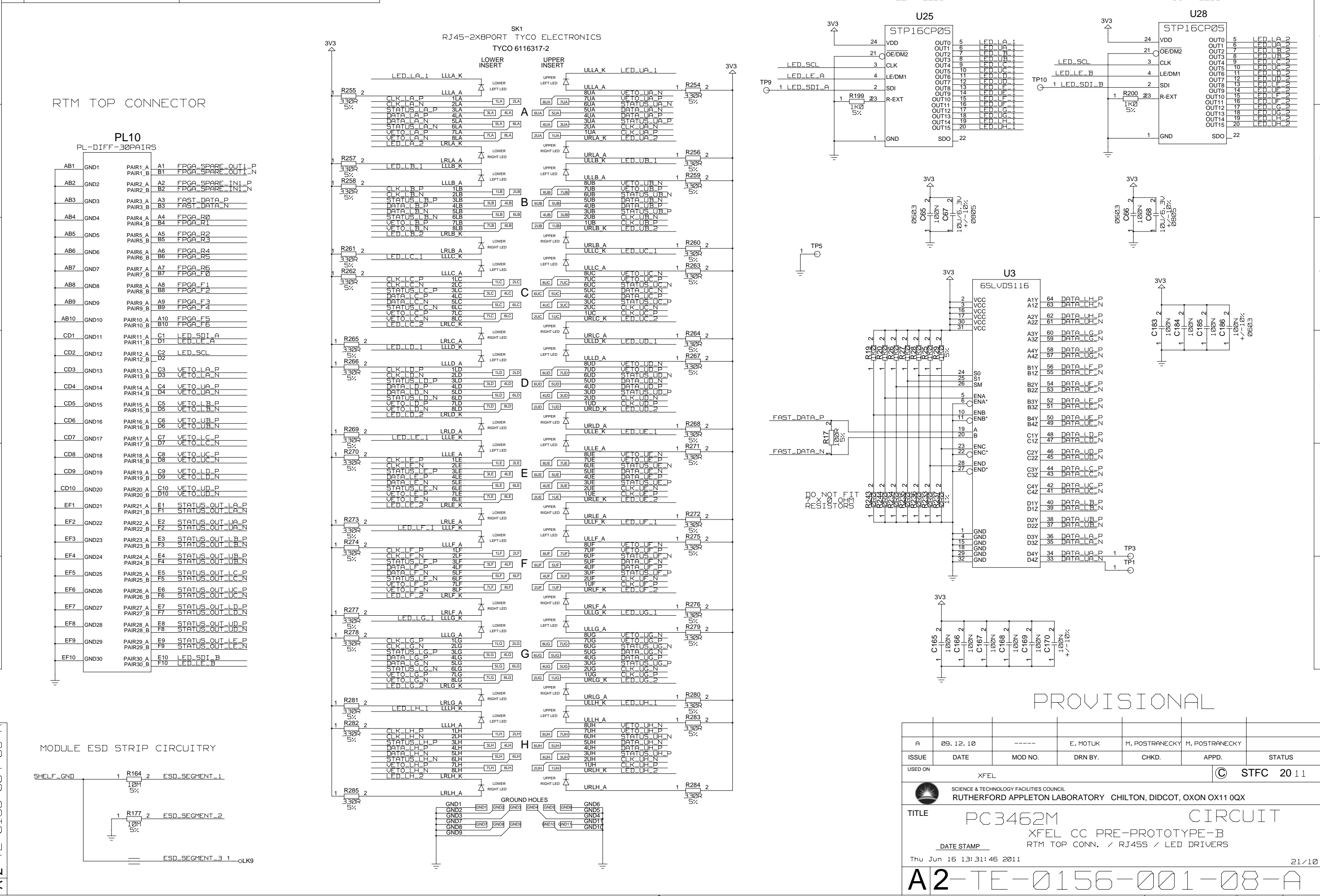
U.K.

PROVISIONAL

A	09. 12. 10	-----	E. MOTUK	M. POSTRANECKY	M. POSTRANECKY	
ISSUE	DATE	MOD NO.	DRN BY.	CHKD.	APPD.	STATUS
USED ON					© STFC 2011	
 SCIENCE & TECHNOLOGY FACILITIES COUNCIL RUTHERFORD APPLETON LABORATORY CHILTON, DIDCOT, OXON OX11 0QX						
TITLE PC3462M CIRCUIT XFEL CC PRE-PROTOTYPE-B <u>DATE STAMP</u> STATUS A/C BUFFERED U/E-H Thu Jun 16 13:31:39 2011 21/10						
A2-TE-0156-001-05-A						







LEFT LEDS

RIGHT LEDS

U25

STP16CP05

3V3

TP9

LED\_SCL

LED\_LE\_A

LED\_SDI\_A

LED\_LA\_1

LED\_LB\_1

LED\_LC\_1

LED\_LD\_1

LED\_LE\_1

LED\_LF\_1

LED\_LG\_1

LED\_LH\_1

LED\_LA\_2

LED\_LB\_2

LED\_LC\_2

LED\_LD\_2

LED\_LE\_2

LED\_LF\_2

LED\_LG\_2

LED\_LH\_2

U28

STP16CP05

3V3

TP10

LED\_SCL

LED\_LE\_B

LED\_SDI\_B

LED\_LA\_2

LED\_LB\_2

LED\_LC\_2

LED\_LD\_2

LED\_LE\_2

LED\_LF\_2

LED\_LG\_2

LED\_LH\_2

U3

65LVDS116

3V3

FAST\_DATA\_P

FAST\_DATA\_N

DO NOT FIT

7 X 0 OHM

RESISTORS

TP3

TP1

PROVISIONAL

A	09.12.10	-----	E. MOTUK	M. POSTRANECKY	M. POSTRANECKY	
ISSUE	DATE	MOD NO.	DRN BY.	CHKD.	APPD.	STATUS
USED ON	XFEL					© STFC 2011
SCIENCE & TECHNOLOGY FACILITIES COUNCIL RUTHERFORD APPLETON LABORATORY CHILTON, DIDCOT, OXON OX11 0QX						
TITLE PC3462M XFEL CC PRE-PROTOTYPE-B RTM TOP CONN. / RJ45S / LED DRIVERS						
DATE STAMP Thu Jun 16 13:31:46 2011						
21/10						

A2-TE-0156-001-08-A

TOTAL NO. OF SHEETS

8