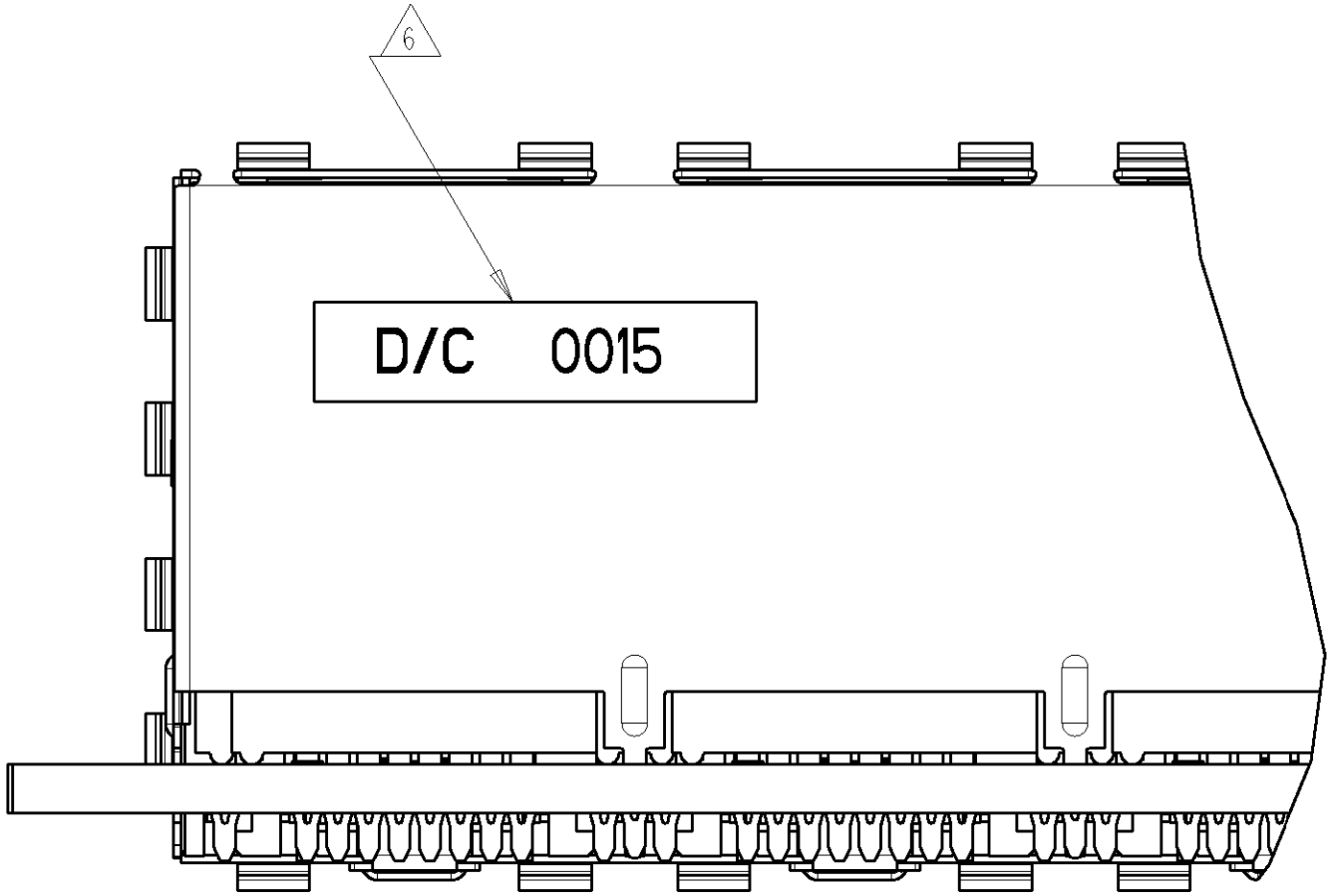
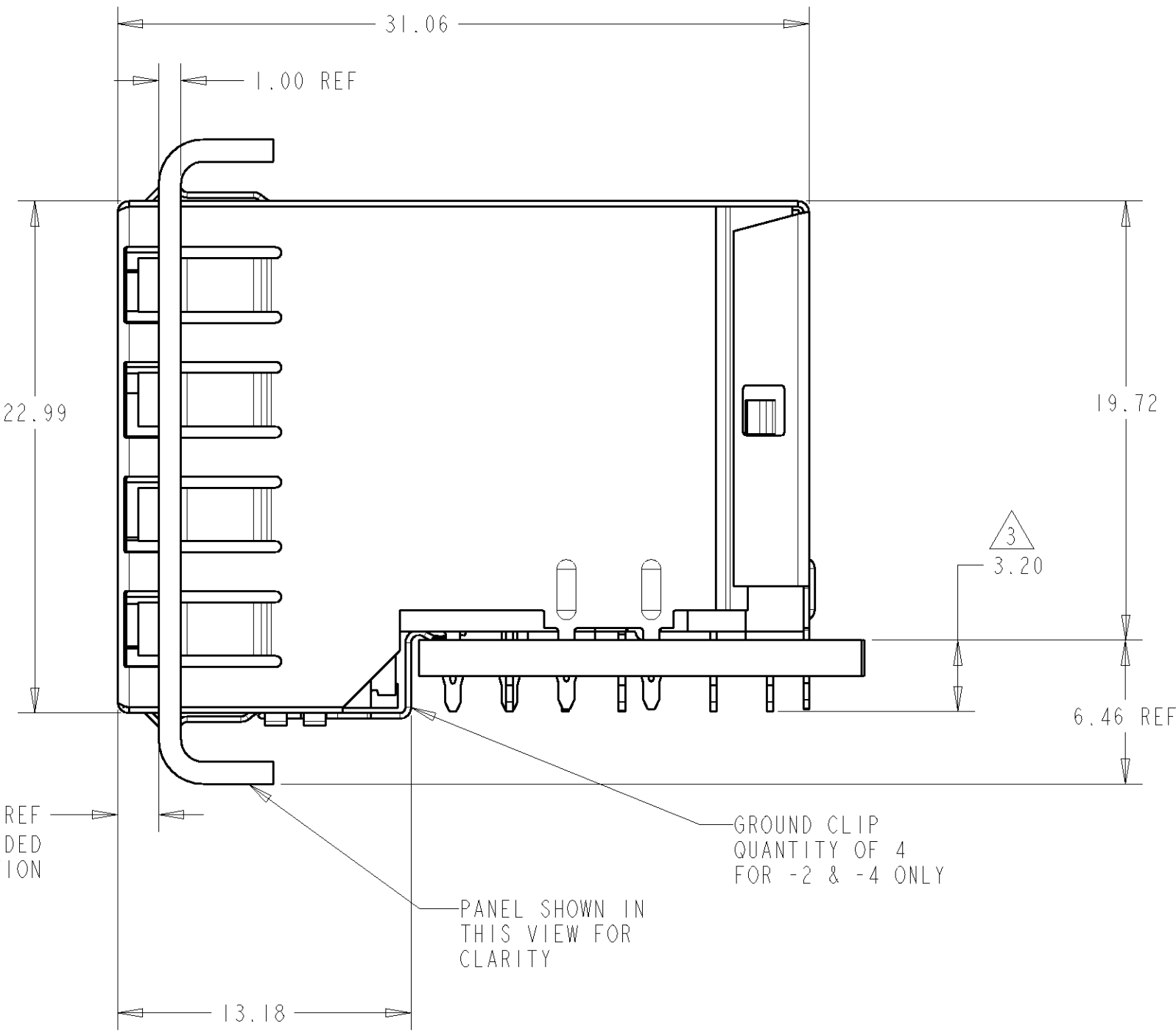
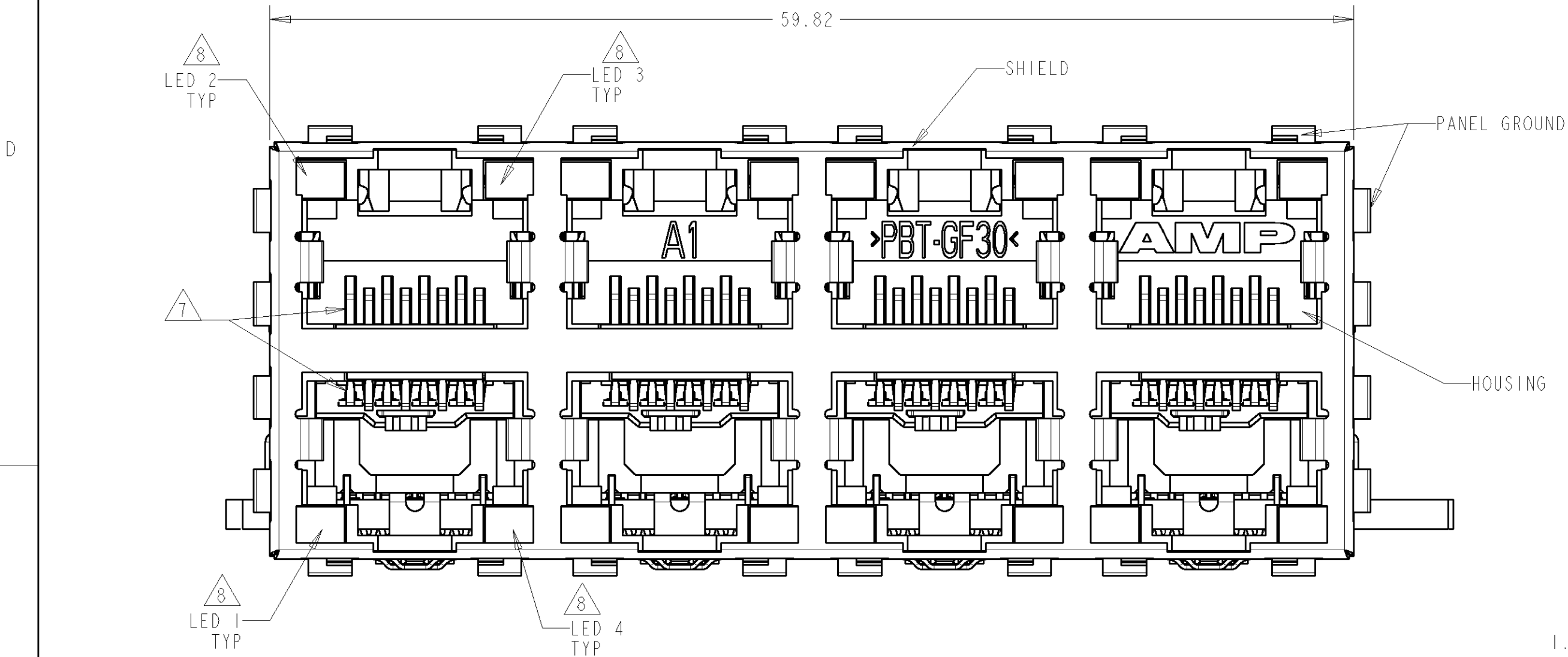
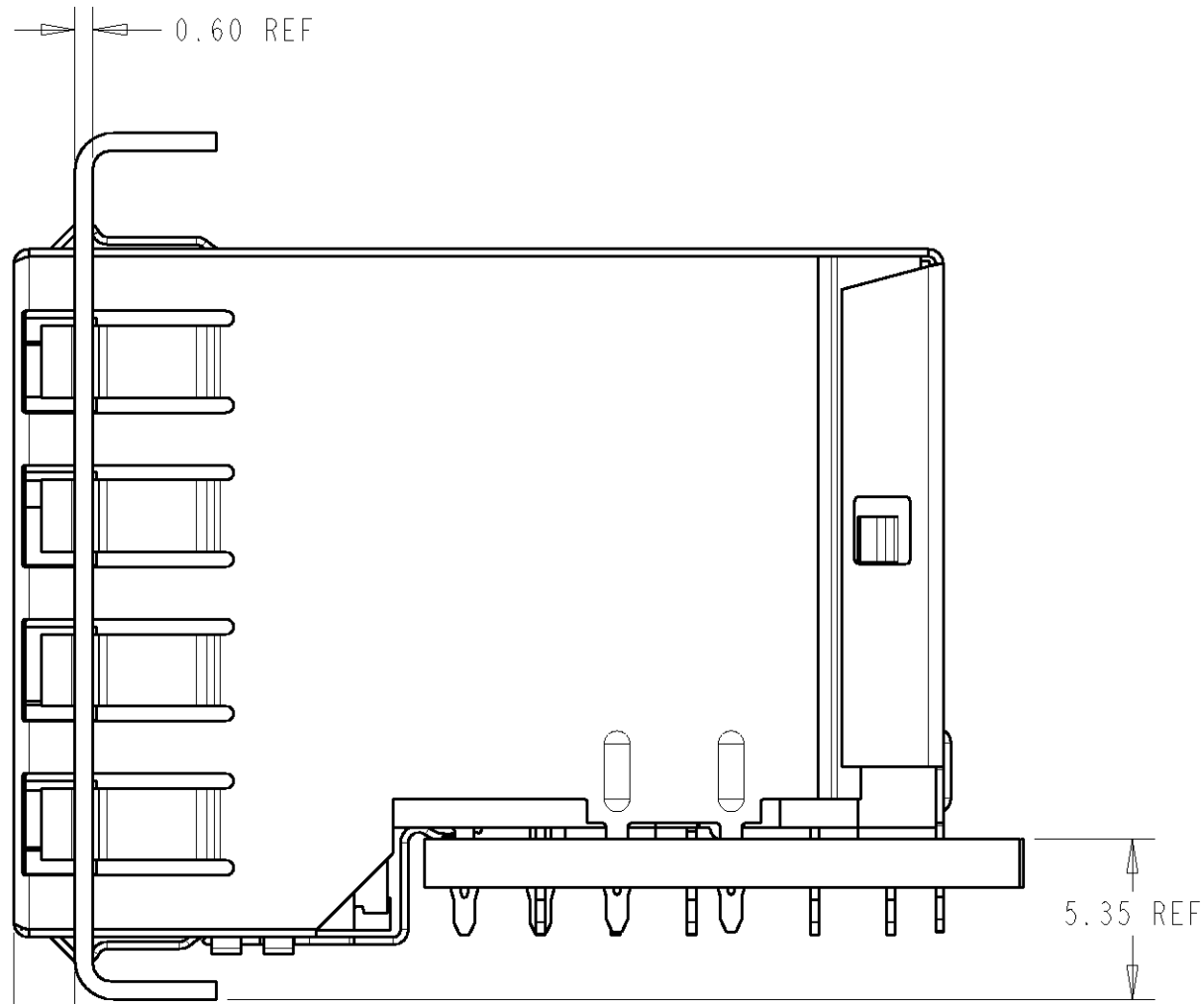


LOC		DIST		REVISIONS			
P	LTR	DESCRIPTION		DATE	DWN	APVD	
A		RELEASED		24OCT2006	LAM	JW	
B		ECO-07-001858		31JAN2007	LAM	JW	



ATCA PANEL AND
PRINTED CIRCUIT BOARD
ASSEMBLY LAYOUT



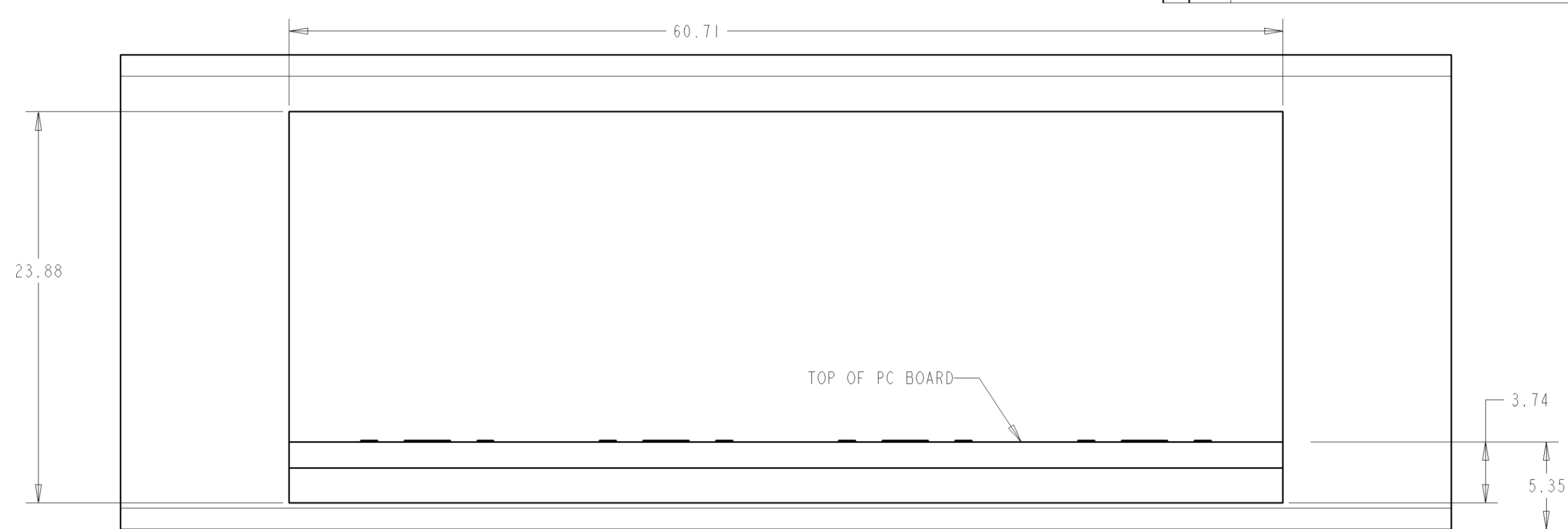
AMC PANEL AND
PRINTED CIRCUIT BOARD
ASSEMBLY LAYOUT

1. MATERIAL:
- HOUSING:
- PBT POLYESTER, BLACK, UL 94V-0
- TERMINALS:
- 0.33 THICK PHOSPHOR BRONZE PLATED WITH 1.27µm MINIMUM THICK HARD GOLD IN LOCALIZED AREA AND 2.0µm MINIMUM THICK MATTE TIN IN COMPLIANT PIN TERMINAL AREA OVER 1.27µm MINIMUM THICK NICKEL UNDERPLATE
- SHIELD:
- 0.25 THICK COPPER ALLOY PLATED WITH 2.03µm MINIMUM TIN OVER 1.27 µm MINIMUM NICKEL
- GROUND CLIP: 0.25 THICK COPPER ALLOY PRE-PLATED WITH 2.03µm MINIMUM MATTE TIN OVER 1.27µm MINIMUM NICKEL
- LIGHT EMITTING DIODE (LED):
- DIFFUSED EPOXY LENS, 12.95 CARBON STEEL WIREFRAME LEADS 8.89µm THICK Sn/Cu OVER 2.03µm THICK Ag OVER 1.02µm THICK Cu OVER 3.56µm THICK Ni OVER 1.02µm THICK Cu UNDERPLATE
- LED COMPLIANT PIN CONTACTS:
- 0.3 THICK BRASS PLATED WITH 2-4µm BRIGHT TIN.
2. JACK CAVITY CONFORMS TO FCC RULES AND REGULATIONS, PART 68 SUBPART F.
- 3 MAXIMUM PIN LENGTH 3.40 FROM TOP SURFACE OF PC BOARD
- 4 FINISHED PLATED THROUGH HOLE DIAMETER - ANNULAR RING DIAMETER 1.3 TO 1.5
- 5 DATUMS AND BASIC DIMENSIONS ESTABLISHED BY CUSTOMER
- 6 DATE CODE LOCATED ON REAR OF PART APPROXIMATELY AS SHOWN
- 7 CONTACTS ARE NOT INTENDED TO BE ALIGNED WITH EACH OTHER
- 8 SUGGESTED OPERATING CURRENT FOR LEDS IS 20mA

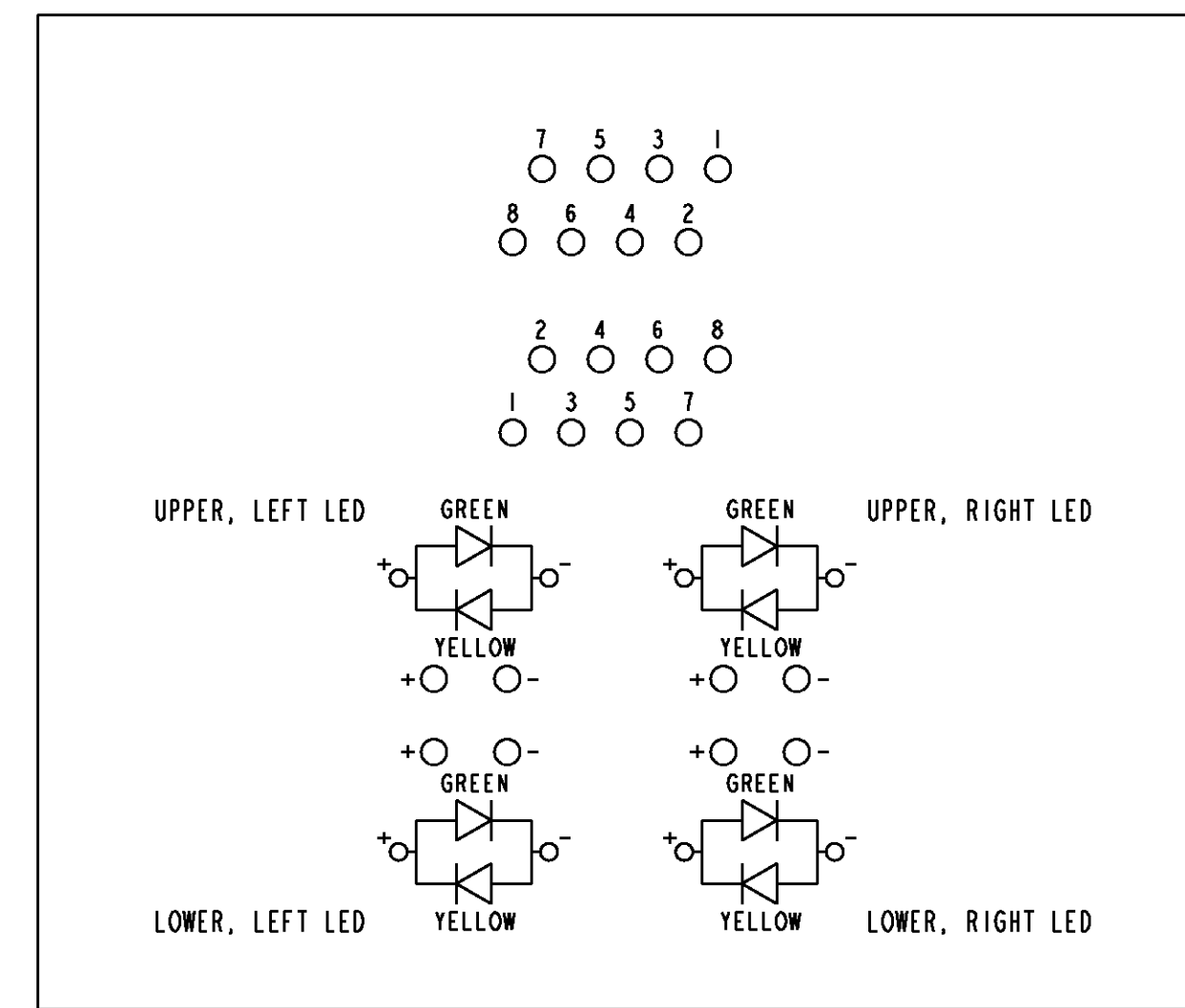
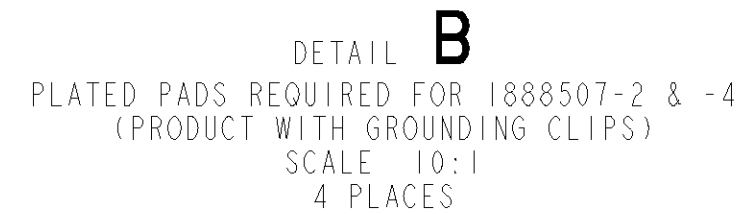
GREEN/YELLOW	GREEN/YELLOW	GREEN/YELLOW	GREEN/YELLOW	WITH GROUND CLIP	1888507-4
YELLOW	YELLOW	GREEN	GREEN	WITHOUT GROUND CLIP	1888507-3
GREEN	GREEN	GREEN	GREEN	WITH GROUND CLIP	1888507-2 (SHOWN)
GREEN	GREEN	GREEN	GREEN	WITHOUT GROUND CLIP	1888507-1
LED #4 (LOWER-RIGHT)	LED #3 (UPPER-RIGHT)	LED #2 (UPPER-LEFT)	LED #1 (LOWER-LEFT)	DESCRIPTION	PART NUMBER

PROPOSED DESIGN
NOT RELEASED
FOR PRODUCTION



DIMENSIONS:		TOLERANCES UNLESS OTHERWISE SPECIFIED:		DWN		APVD		NAME		Tyco Electronics	
mm		0 PLC ±		R. SCHRUM/L. A. MAYER		24OCT2006		J. WESTMAN		Harrisburg, PA 17103-3608	
Ø		1 PLC ±0.13		S. FLICKINGER		24OCT2006		S. FLICKINGER		STACKED MODULAR JACK ASSEMBLY, 2x4 OFFSET, WITH LEDS, 8 POSN, RJ45 SHIELDED, PANEL GROUNDS, CAT 5	
MATERIAL		SEE NOTE 1		PRODUCT SPEC		108-1854		APPLICATION SPEC		SIZE CAGE CODE DRAWING NO	
FINISH		SEE NOTE 1		114-2160		WEIGHT		A 00779 C=1888507		RESTRICTED TO	
CUSTOMER DRAWING										SCALE 4:1 SHEET 1 OF 2 REV B	



AMC PANEL AND PRINTED CIRCUIT BOARD LAYOUT

PC BOARD LAYOUT
(COMPONENT SIDE)

PROPOSED DESIGN
NOT RELEASED
FOR PRODUCTION

<small>THIS DRAWING IS THE PROPERTY OF TYCO ELECTRONICS. IT IS TO BE USED FOR THE SPECIFIC PROJECT AND PURPOSE FOR WHICH IT WAS ISSUED. IT IS NOT TO BE REPRODUCED OR COPIED IN ANY MANNER WITHOUT THE WRITTEN PERMISSION OF TYCO ELECTRONICS. IT IS TO BE RETURNED TO TYCO ELECTRONICS WHEN NO LONGER REQUIRED. IT IS TO BE DESTROYED WHEN NO LONGER REQUIRED. IT IS TO BE KEPT IN A SAFE PLACE AND NOT BE LOANED TO ANY OTHER PERSON. IT IS TO BE KEPT IN A SAFE PLACE AND NOT BE LOANED TO ANY OTHER PERSON. IT IS TO BE KEPT IN A SAFE PLACE AND NOT BE LOANED TO ANY OTHER PERSON.</small>		DWN 240C12006 K. SCHRUMML & MAYER CWR 240C12006 J. WESTMAN APVD 240C12006 S. FLICKINGER		 Tyco Electronics Harrisburg, PA 17105-3608	
DIMENSIONS: mm		TOLERANCES UNLESS OTHERWISE SPECIFIED: 0 PLC ±.1 1 PLC ±.01 2 PLC ±.0013 3 PLC ±.1 4 PLC ±.1 ANGLE ±.1		NAME STAKED MODULAR JACK ASSEMBLY, 2x4 OFFSET, WITH LEDS, 8 POSN, RJ45 SHIELDED, PANEL GROUNDS, CAT 5	
		PRODUCT SPEC 108-1854 APPLICATION SPEC 114-2160		SIZE CAGE CODE DRAWING NO A 1 00779 C-1888507	
MATERIAL SEE NOTE 1		FINISH SEE NOTE 1		WEIGHT - CUSTOMER DRAWING	
				SCALE 4:1 SHEET 2 OF 2 REV B	